

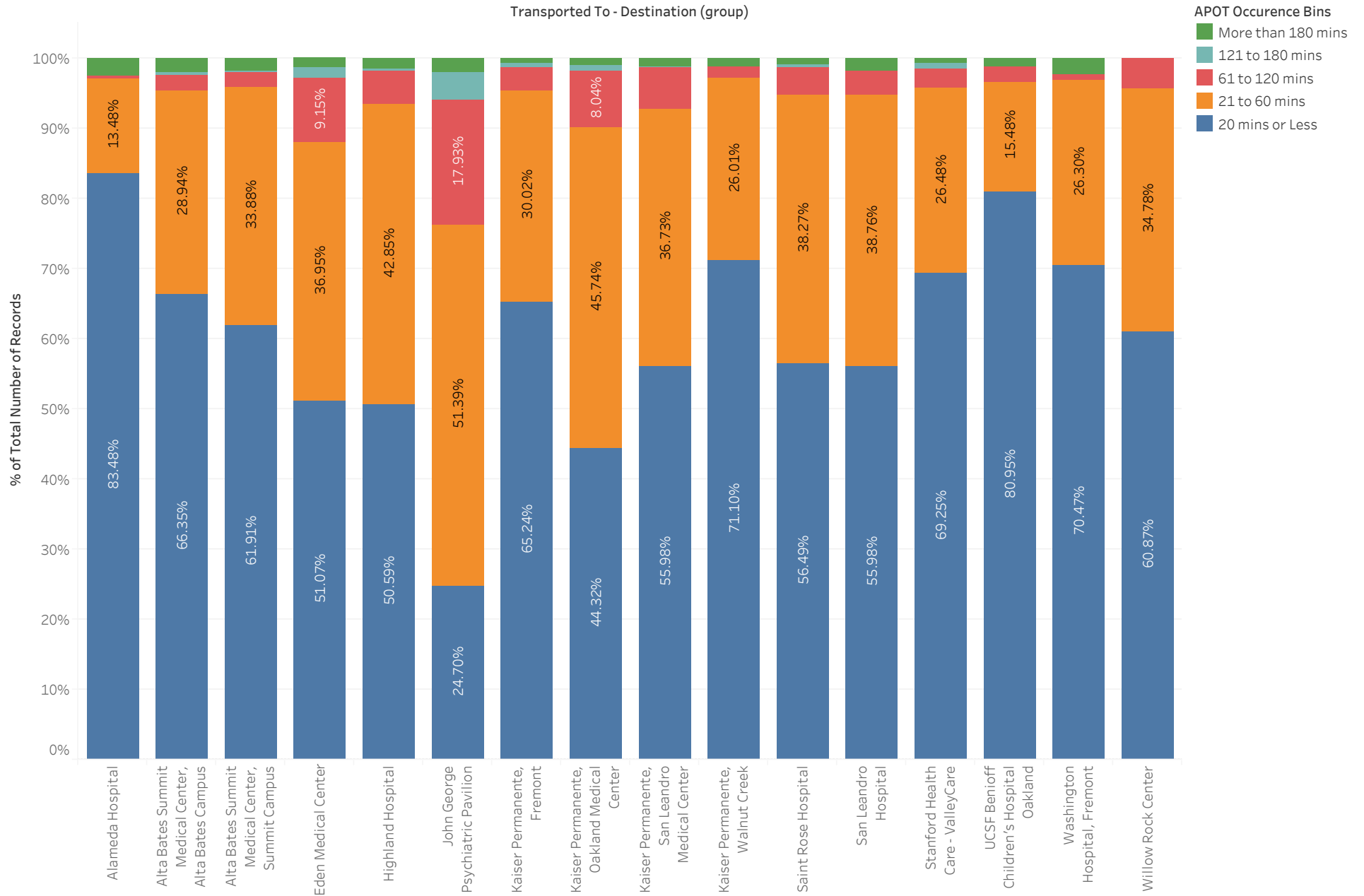
Summary - September 2020

Transported To - Destination (group)	Avg. TOC	Percentile (90) of TOC	APOD > 60 min	APOD % of N	
Alameda Hospital	31.1	25.0	7	3%	230
Alta Bates Summit Medical Center, Alta Bates Campus	47.0	49.1	20	5%	425
Alta Bates Summit Medical Center, Summit Campus	42.0	38.0	44	4%	1,045
Eden Medical Center	39.4	66.0	106	12%	885
Highland Hospital	43.2	52.0	78	7%	1,188
John George Psychiatric Pavilion	49.8	95.0	60	24%	251
Kaiser Permanente, Fremont	28.1	45.9	21	5%	443
Kaiser Permanente, Oakland Medical Center	41.8	62.0	63	10%	634
Kaiser Permanente, San Leandro Medical Center	37.7	47.0	53	7%	727
Kaiser Permanente, Walnut Creek	33.8	29.8	5	3%	173
Saint Rose Hospital	35.6	47.0	23	5%	439
San Leandro Hospital	38.6	47.0	22	5%	418
Stanford Health Care - ValleyCare	26.8	39.0	21	4%	491
UCSF Benioff Children's Hospital Oakland	31.4	30.6	3	4%	84
Washington Hospital, Fremont	42.3	35.0	25	3%	772
Willow Rock Center	23.2	35.6	1	4%	23
Grand Total					8,228

APOT Bins

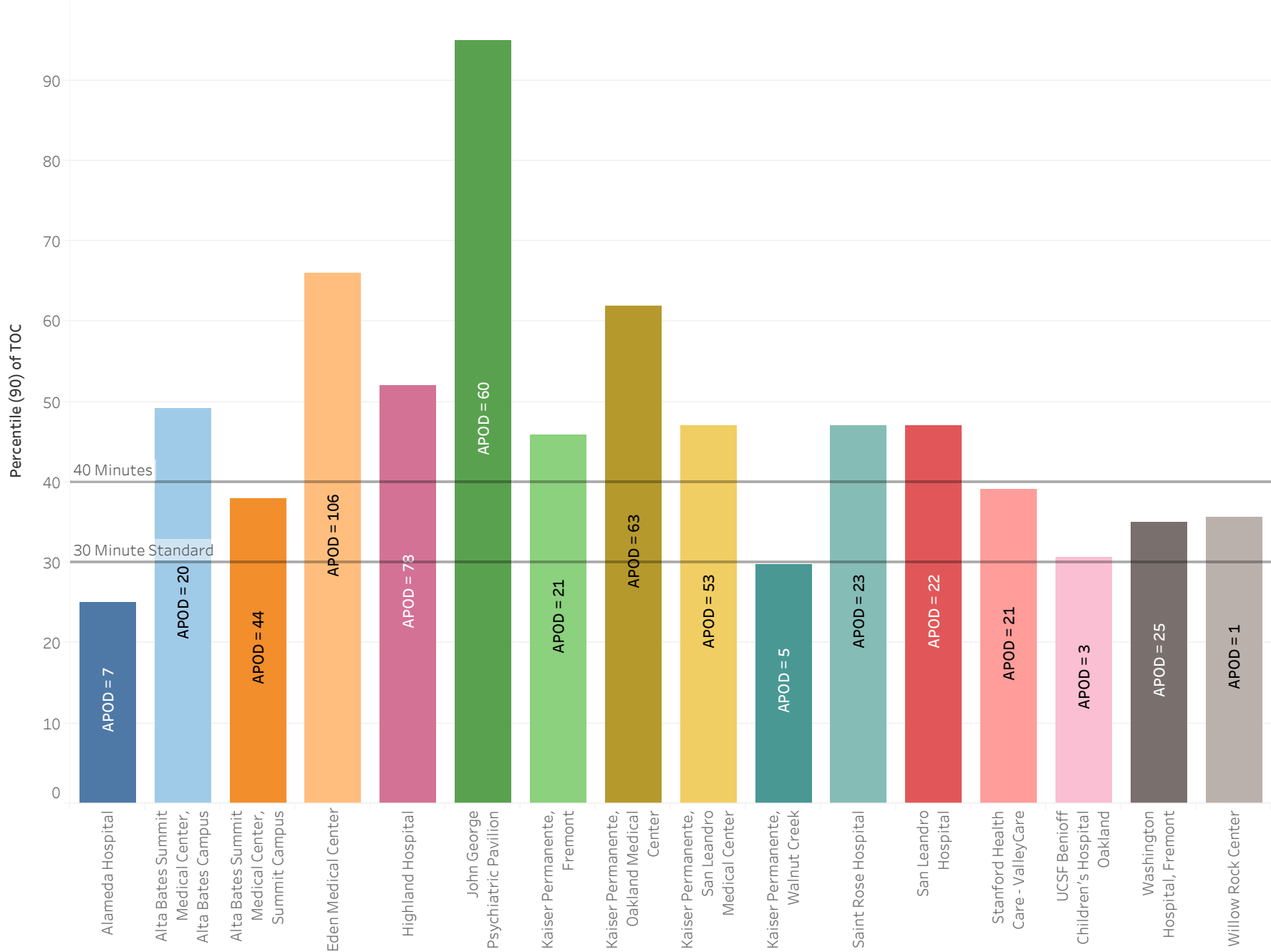
Transported To - Destination (group)	APOT Occurrence Bins					Grand Total
	20 mins or Less	21 to 60 mins	61 to 120 mins	121 to 180 mins	More than 180 mins	
Alameda Hospital	192 83.48%	31 13.48%	1 0.43%		6 2.61%	230 100.00%
Alta Bates Summit Medical Center, Alta Bates Campus	282 66.35%	123 28.94%	9 2.12%	2 0.47%	9 2.12%	425 100.00%
Alta Bates Summit Medical Center, Summit Campus	647 61.91%	354 33.88%	22 2.11%	2 0.19%	20 1.91%	1,045 100.00%
Eden Medical Center	452 51.07%	327 36.95%	81 9.15%	13 1.47%	12 1.36%	885 100.00%
Highland Hospital	601 50.59%	509 42.85%	55 4.63%	5 0.42%	18 1.52%	1,188 100.00%
John George Psychiatric Pavilion	62 24.70%	129 51.39%	45 17.93%	10 3.98%	5 1.99%	251 100.00%
Kaiser Permanente, Fremont	289 65.24%	133 30.02%	15 3.39%	3 0.68%	3 0.68%	443 100.00%
Kaiser Permanente, Oakland Medical Center	281 44.32%	290 45.74%	51 8.04%	5 0.79%	7 1.10%	634 100.00%
Kaiser Permanente, San Leandro Medical Center	407 55.98%	267 36.73%	43 5.91%	1 0.14%	9 1.24%	727 100.00%
Kaiser Permanente, Walnut Creek	123 71.10%	45 26.01%	3 1.73%		2 1.16%	173 100.00%
Saint Rose Hospital	248 56.49%	168 38.27%	17 3.87%	2 0.46%	4 0.91%	439 100.00%
San Leandro Hospital	234 55.98%	162 38.76%	14 3.35%		8 1.91%	418 100.00%
Stanford Health Care - ValleyCare	340 69.25%	130 26.48%	13 2.65%	4 0.81%	4 0.81%	491 100.00%
UCSF Benioff Children's Hospital Oakland	68 80.95%	13 15.48%	2 2.38%		1 1.19%	84 100.00%
Washington Hospital, Fremont	544 70.47%	203 26.30%	7 0.91%		18 2.33%	772 100.00%
Willow Rock Center	14 60.87%	8 34.78%	1 4.35%			23 100.00%
Grand Total	4,784 58.14%	2,892 35.15%	379 4.61%	47 0.57%	126 1.53%	8,228 100.00%

APOT Bins Graph



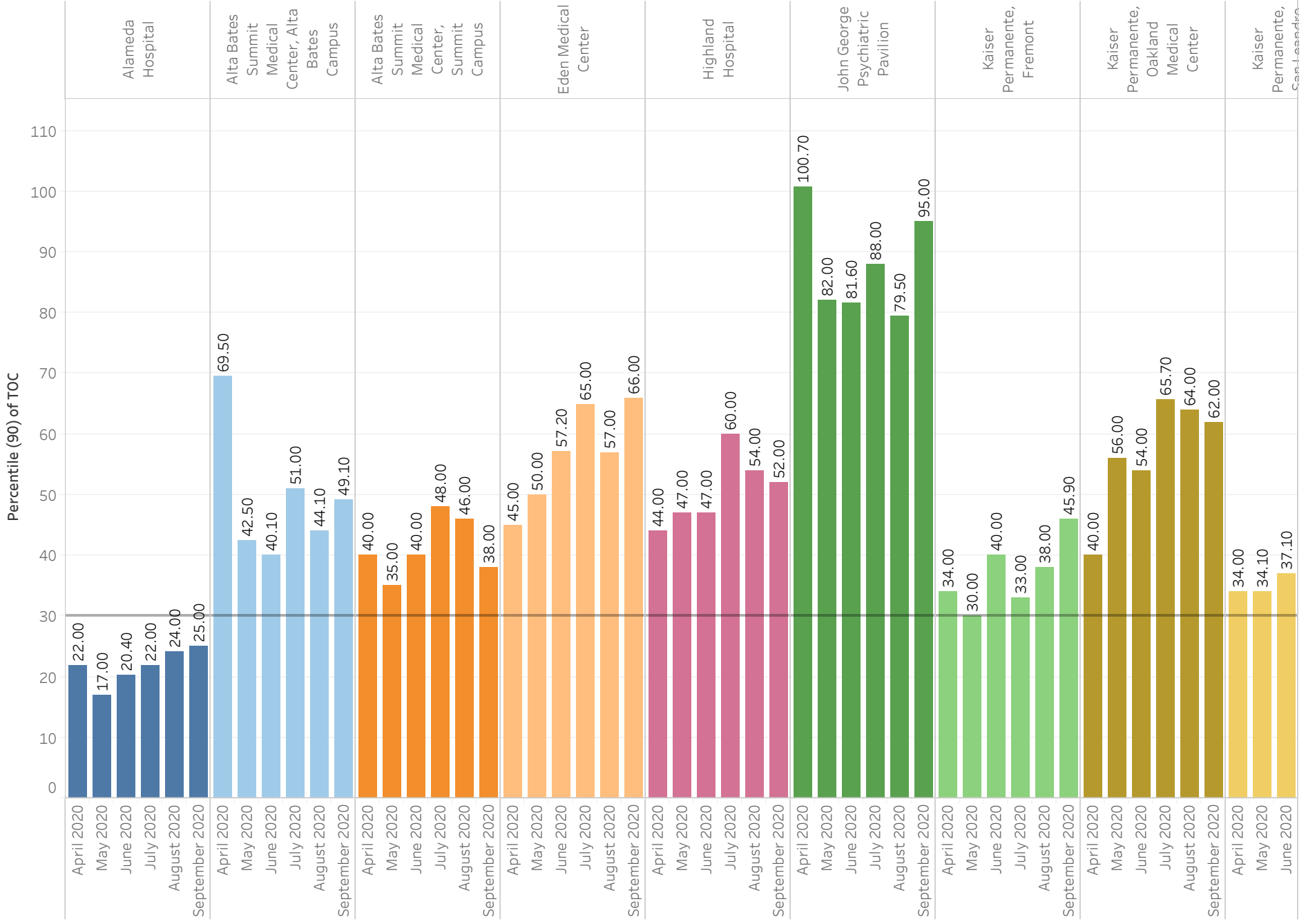
Current Month 90% APOT

Transported To - Destination (group)

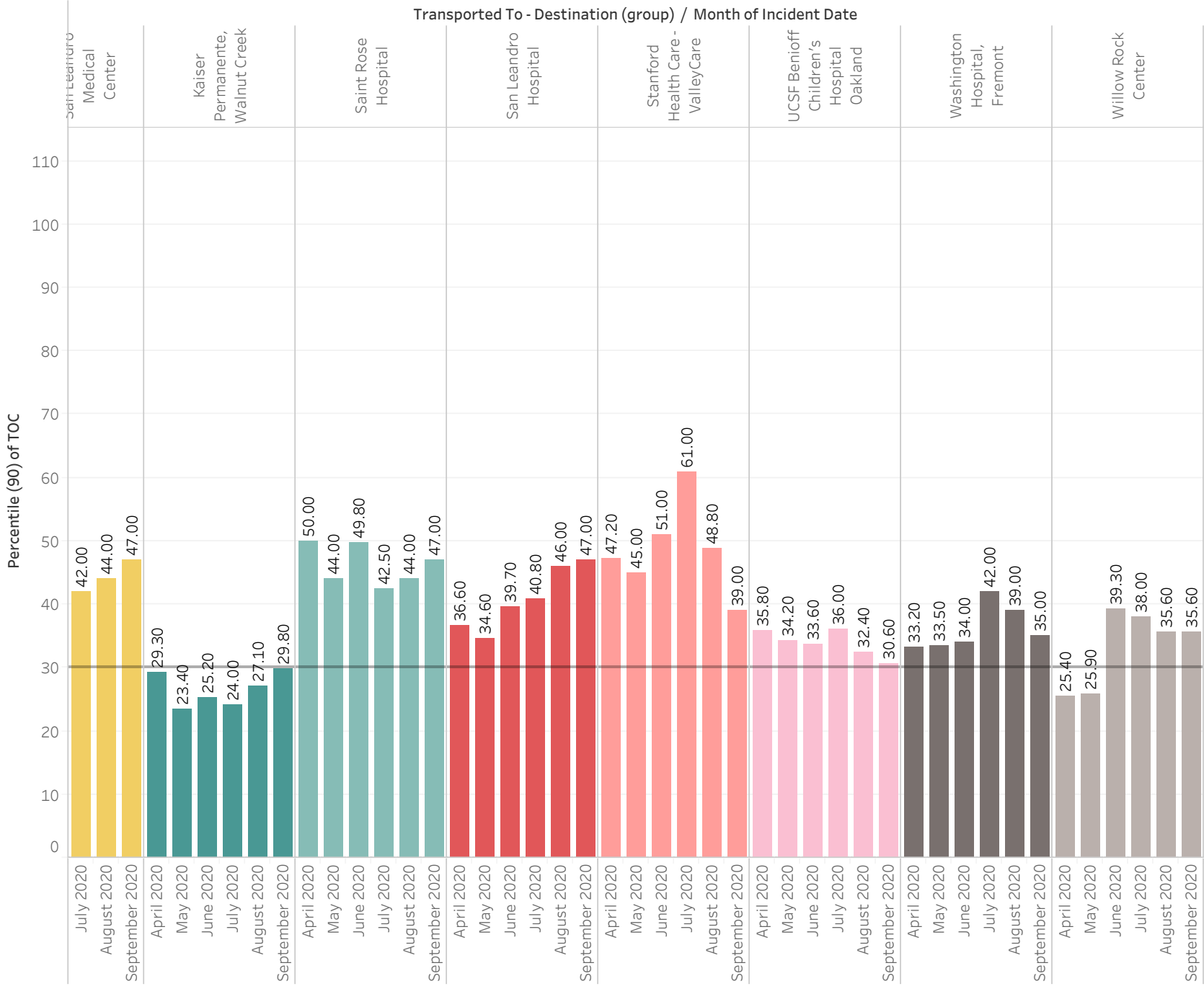


Prev Month 90% APOT

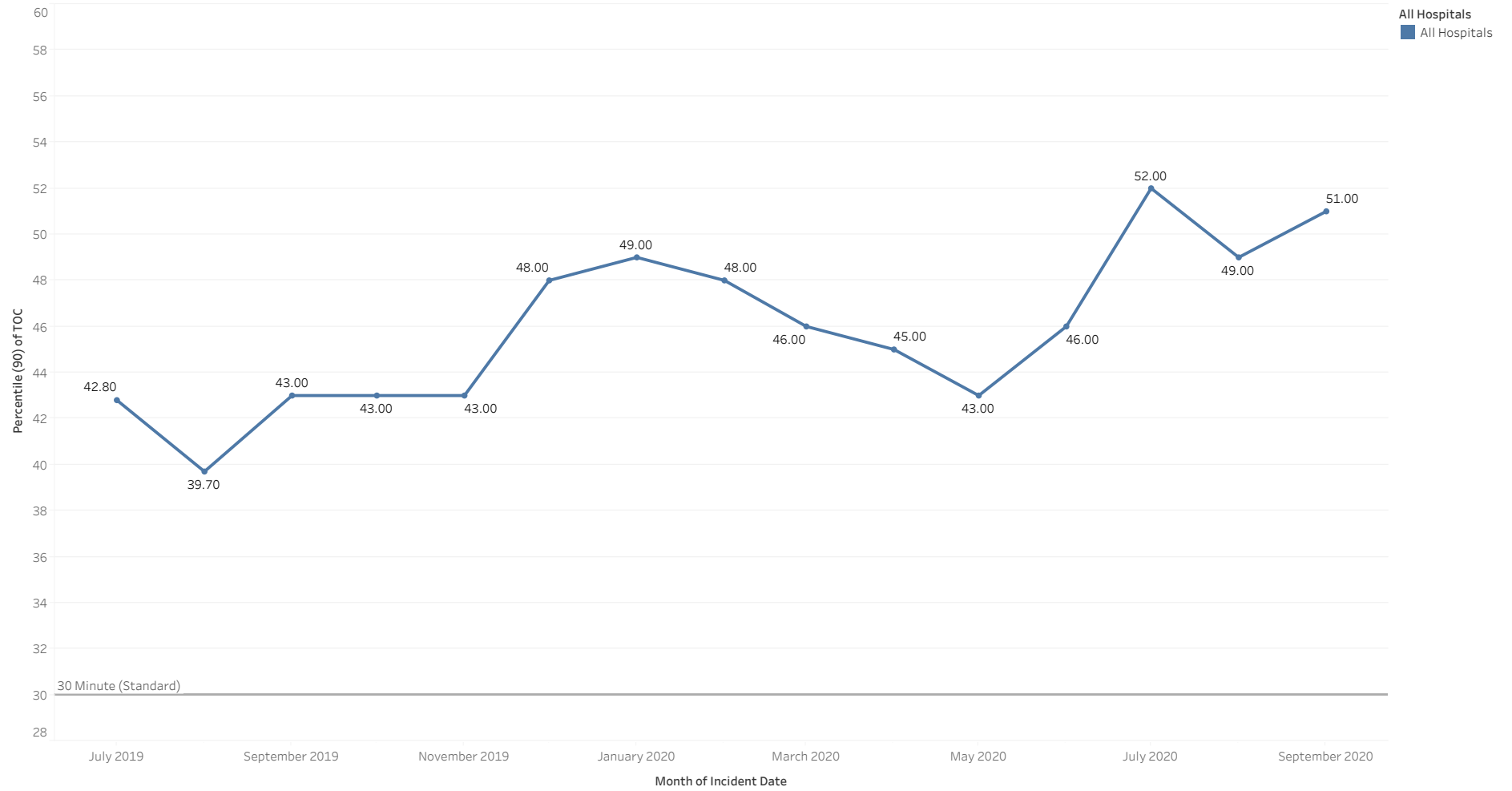
Transported To - Destination (group) / Month of Incident Date



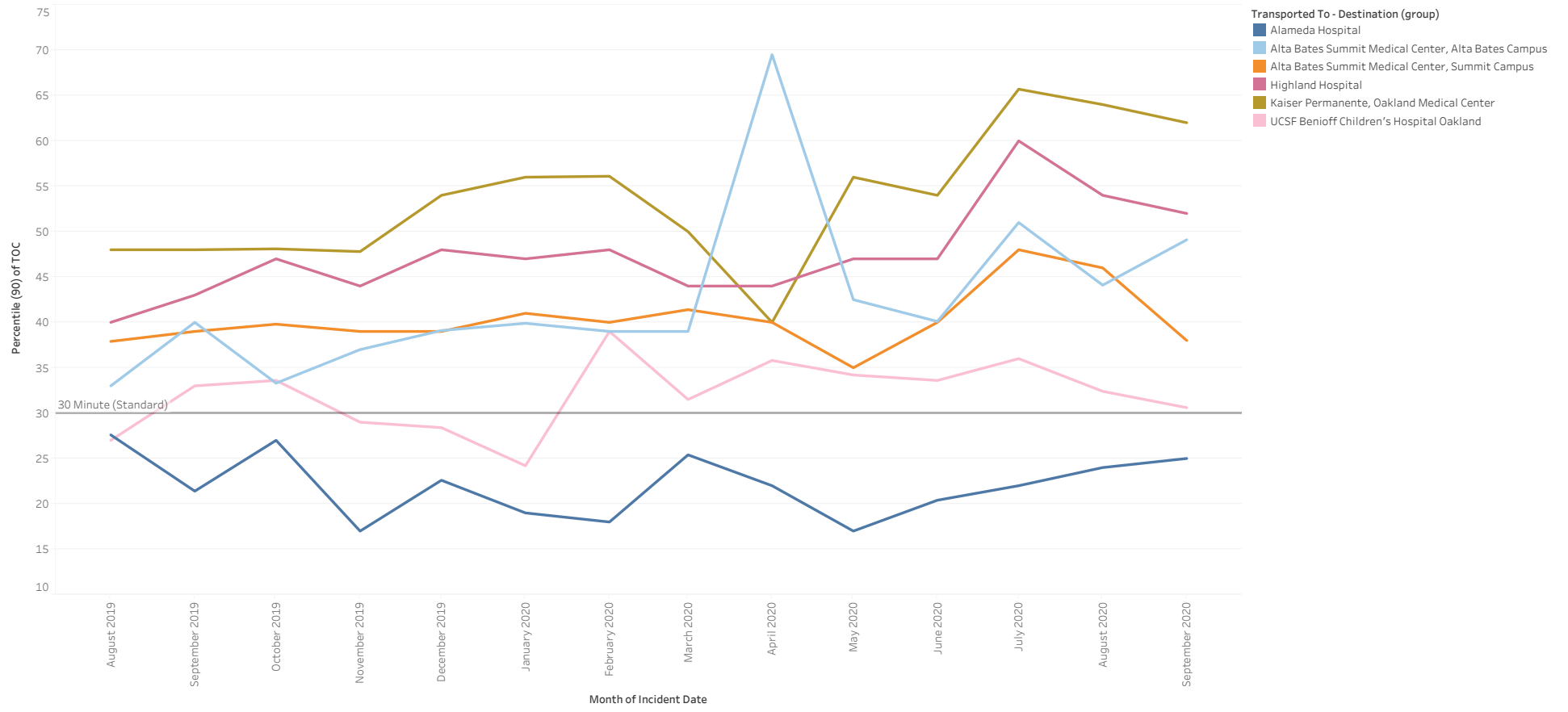
Prev Month 90% APOT



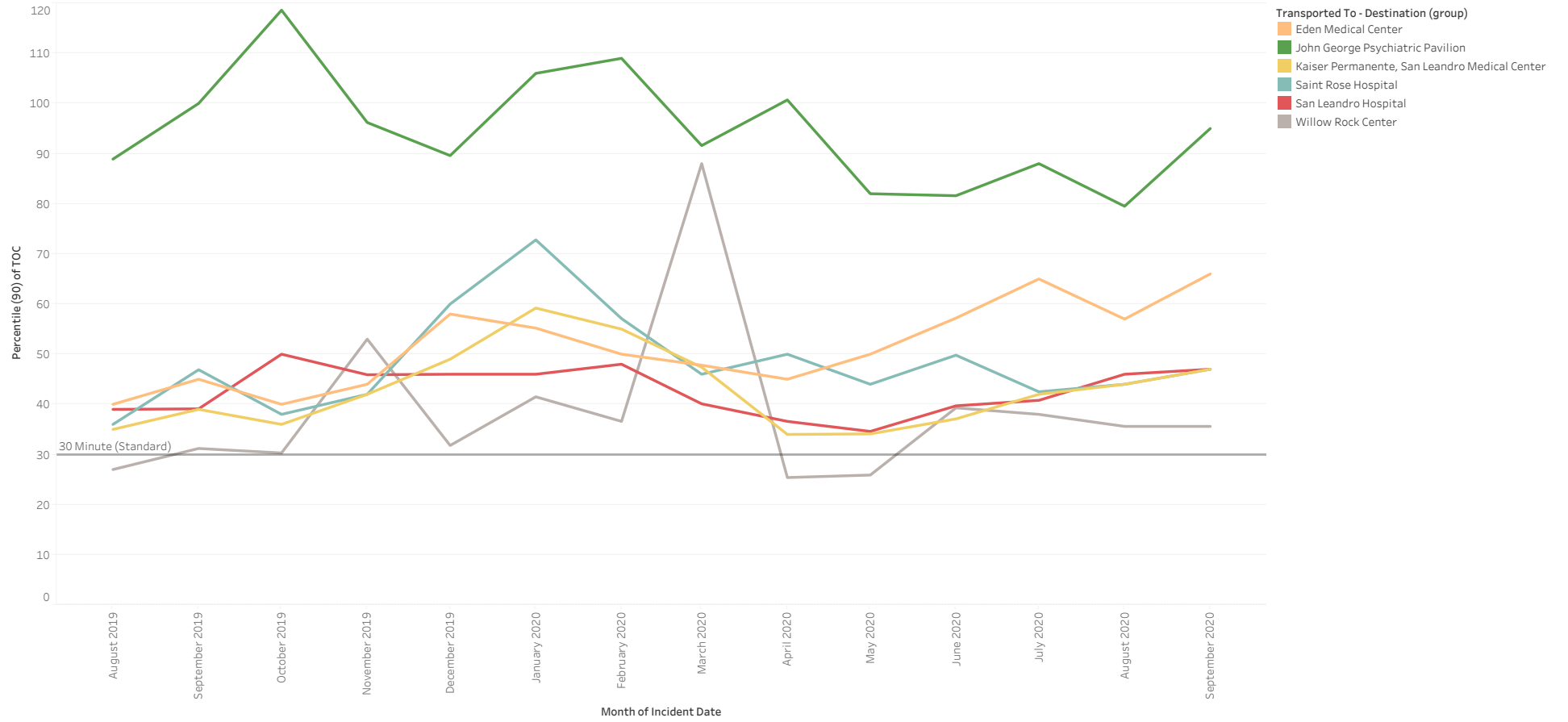
All Hospital 90% APOT



North 90% APOT



Mid 90% APOT



South and East 90% APOT

