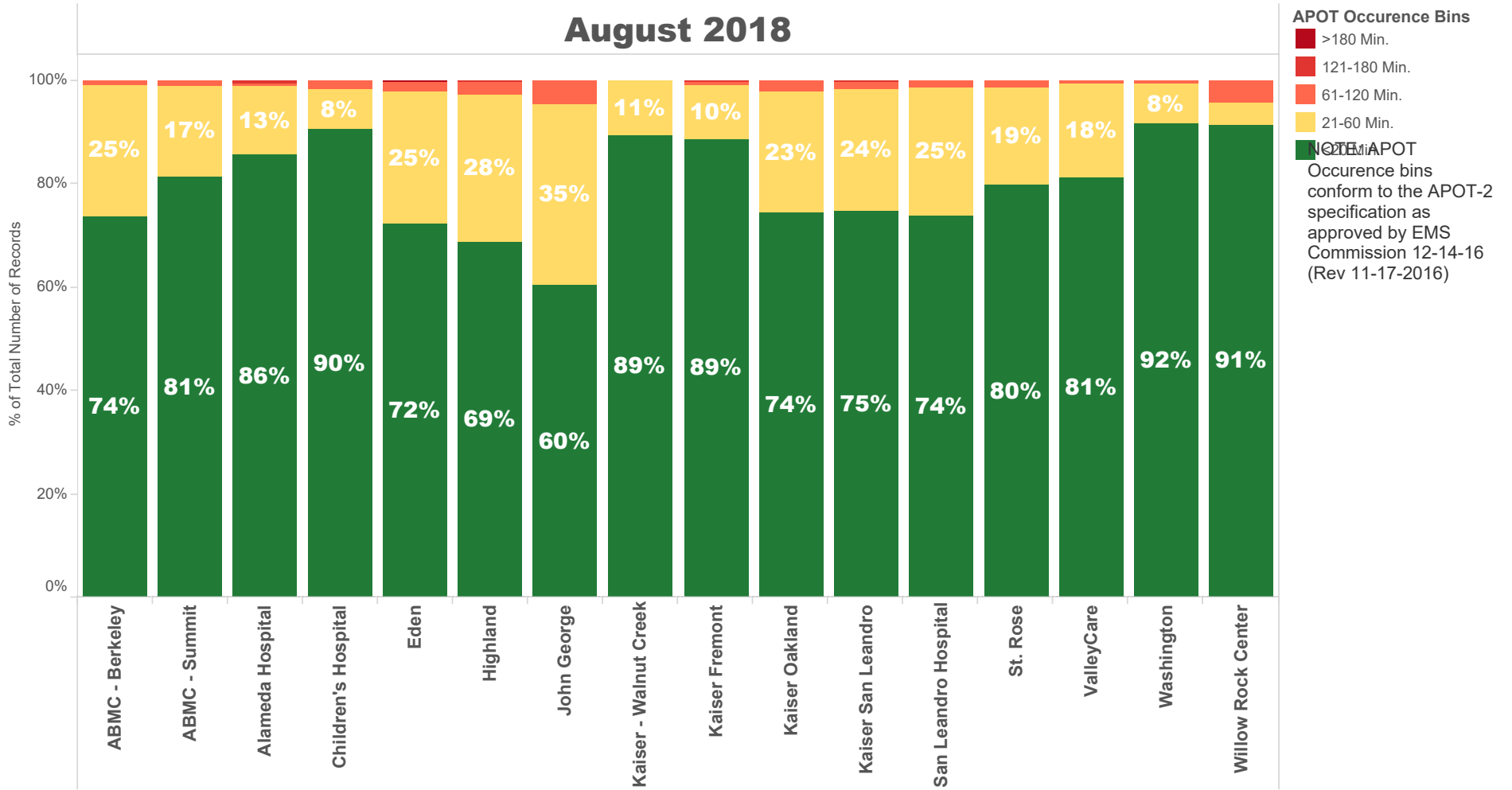


# August 2018

NOTE: The **90th percentile** is the value for which 90% of the data points are smaller.

<b>Destination Facility</b>	Rank (Composite)	Avg. TOC	90th Percentile TOC	APOD >60 min	APOD % of N	N = Number of Transports
Kaiser - Walnut Creek	2	11 min.	21.1 min.	0	0%	150
ABMC - Berkeley	7	17 min.	34.4 min.	7	1%	577
John George	12	22 min.	44.0 min.	22	5%	441
Alameda Hospital	3	12 min.	24.5 min.	2	1%	176
Children's Hospital	5	11 min.	19.0 min.	3	3%	115
San Leandro Hospital	8	17 min.	33.0 min.	10	2%	611
Washington	1	12 min.	19.0 min.	4	1%	791
Kaiser Fremont	3	13 min.	22.0 min.	5	1%	429
ABMC - Summit	6	15 min.	31.0 min.	14	1%	1,069
ValleyCare	4	14 min.	29.0 min.	5	1%	573
Kaiser Oakland	10	17 min.	36.6 min.	16	3%	615
Kaiser San Leandro	8	17 min.	31.0 min.	12	2%	724
Eden	9	18 min.	35.0 min.	22	2%	936
Highland	11	19 min.	36.0 min.	37	3%	1,264
St. Rose	7	16 min.	28.3 min.	7	2%	418
Willow Rock Center	8	15 min.	20.0 min.	1	4%	23

# August 2018



# August 2018

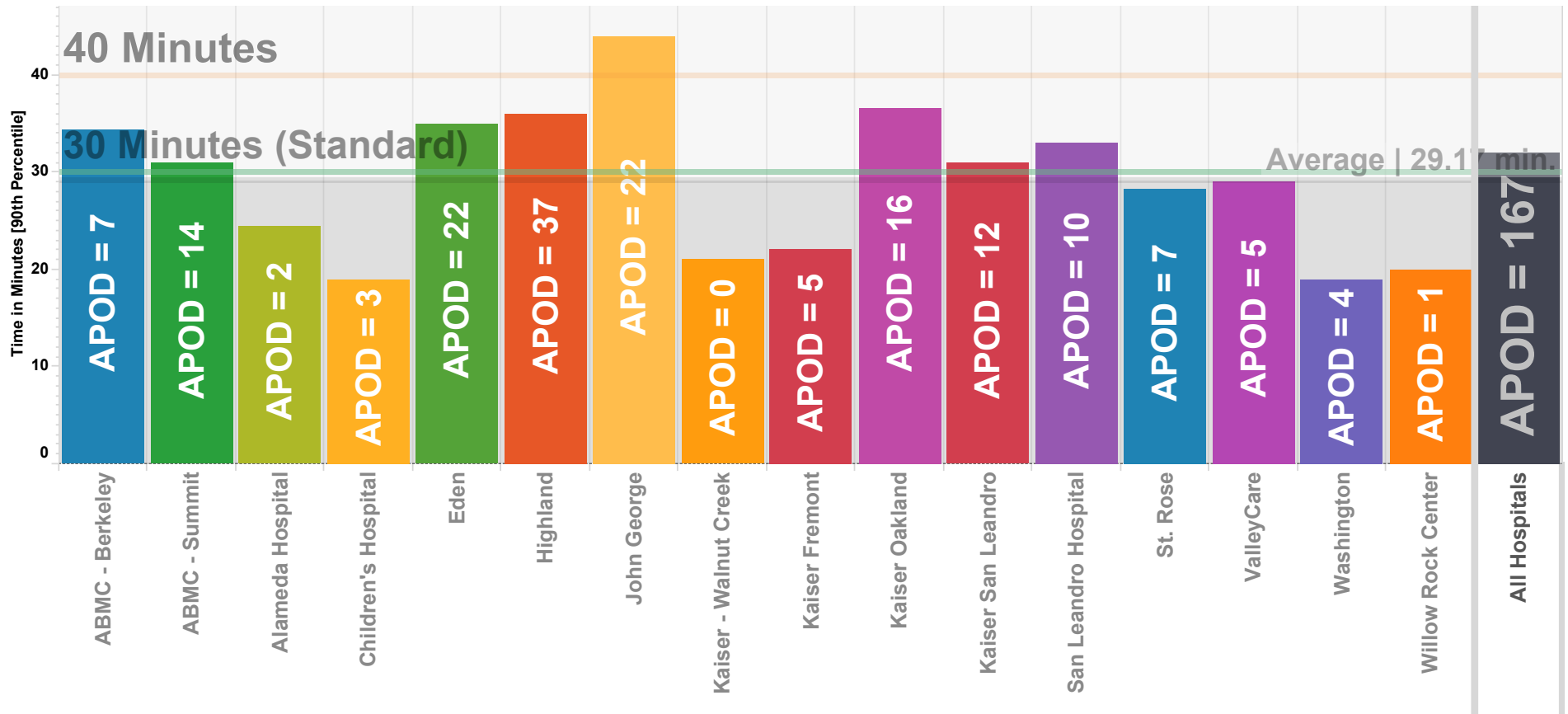
	ABMC - Berkeley	ABMC - Summit	Alameda Hospital	Children's Hospital	Eden	Highland	John George	Kaiser - Walnut Creek	Kaiser Fremont	Kaiser Oakland	Kaiser San Leandro	San Leandro Hospital	St. Rose	ValleyCare	Washington	Willow Rock Center
<b>APOT Occurrence Bins</b>																
<b>&lt;20 Min.</b>	73.7% 425	81.5% 871	85.8% 151	90.4% 104	72.3% 677	68.8% 870	60.3% 266	89.3% 134	88.6% 380	74.3% 457	74.6% 540	73.8% 451	79.7% 333	81.2% 465	91.5% 724	91.3% 21
<b>21-60 Min.</b>	25.3% 146	17.3% 185	13.1% 23	7.8% 9	25.4% 238	28.4% 359	34.9% 154	10.7% 16	10.5% 45	23.4% 144	23.8% 172	24.7% 151	18.9% 79	18.2% 104	8.0% 63	4.3% 1
<b>61-120 Min.</b>	1.0% 6	1.2% 13	0.6% 1	1.7% 2	2.1% 20	2.7% 34	4.8% 21		0.7% 3	2.3% 14	1.5% 11	1.5% 9	1.4% 6	0.7% 4	0.5% 4	4.3% 1
<b>121-180 Min.</b>			0.6% 1			0.1% 1			0.2% 1		0.1% 1					
<b>&gt;180 Min.</b>					0.1% 1											

NOTE: APOT Occurrence bins conform to the APOT-2 specification as approved by EMS Commission 12-14-16 (Rev 11-17-2016)

## Ambulance Patient Offload Times (APOT) August 2018

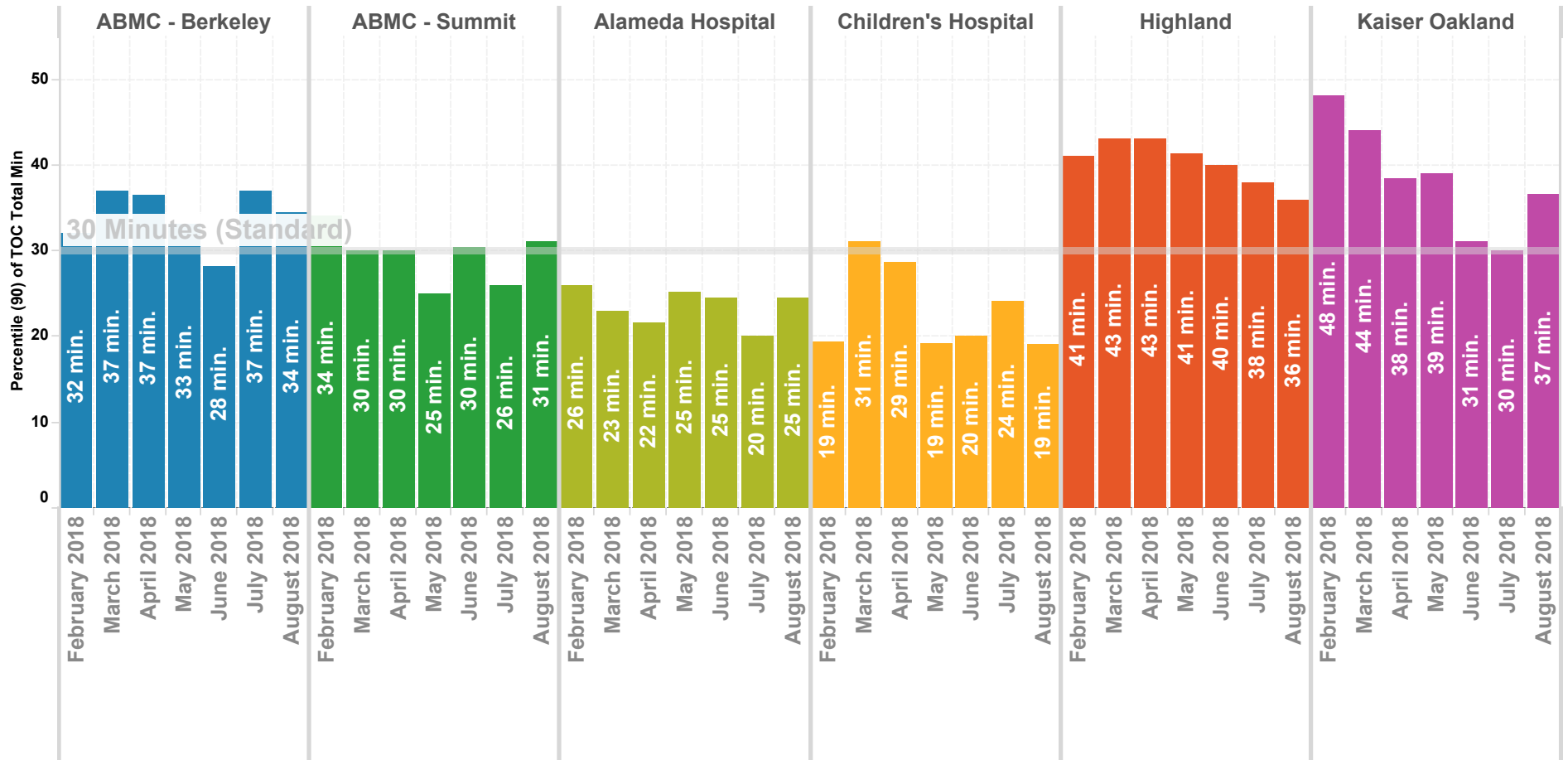
90th Percentile

NOTE: The **90th percentile** is the value for which 90% of the data points are smaller.



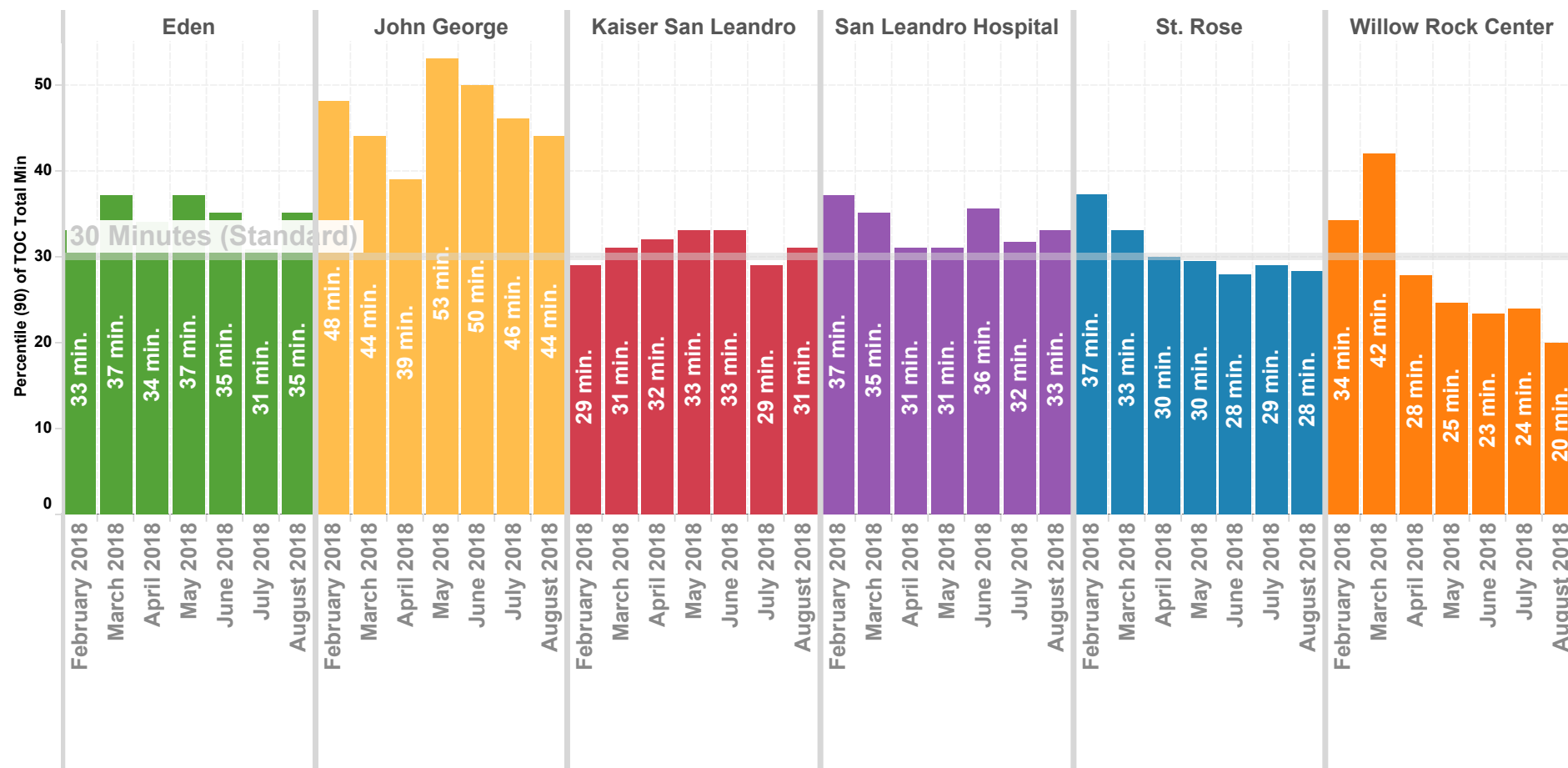
# Wall Times (TOC) 2016 By Month - North County

Previous 8 Months | 90th Percentile



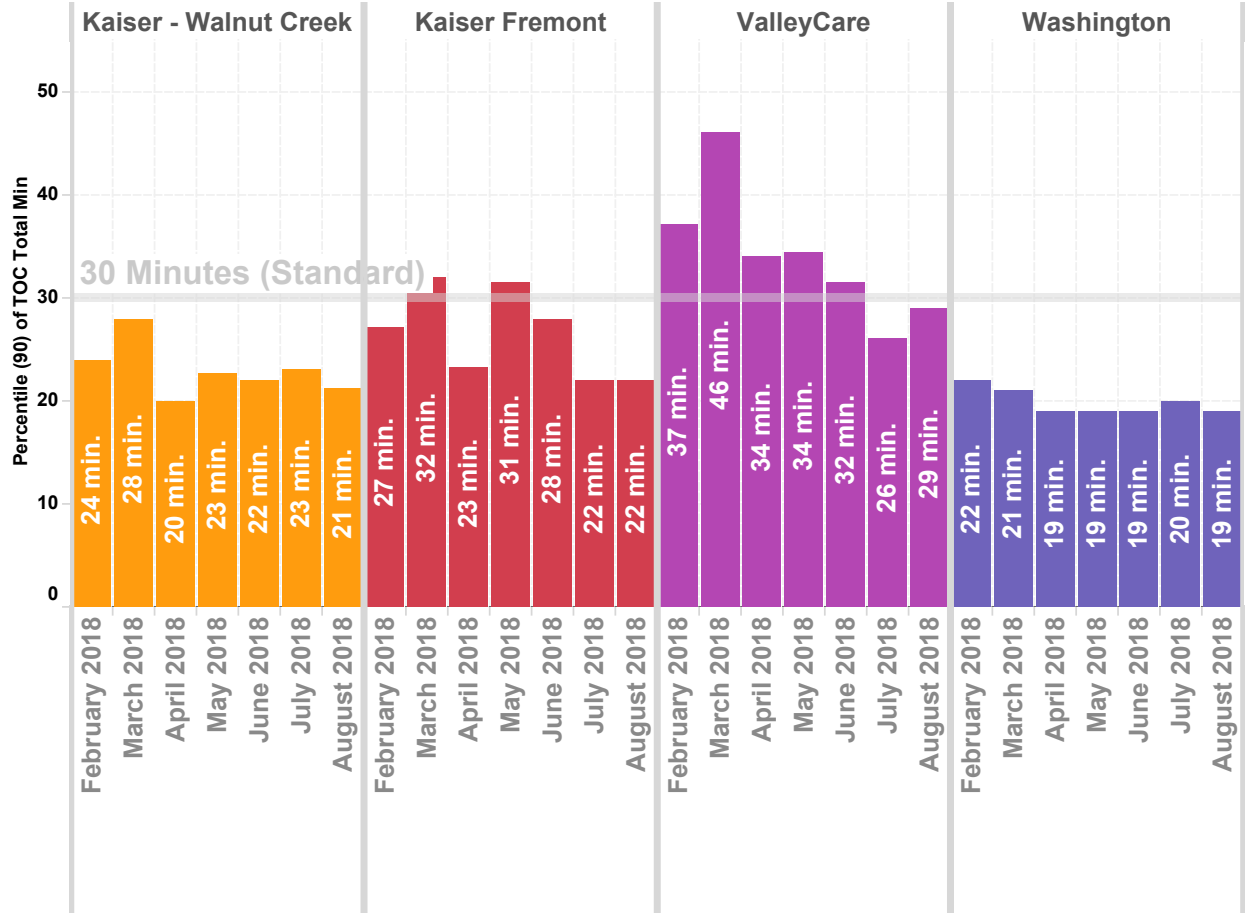
# Wall Times (TOC) 2016 By Month - Mid County

Previous 8 Months | 90th Percentile



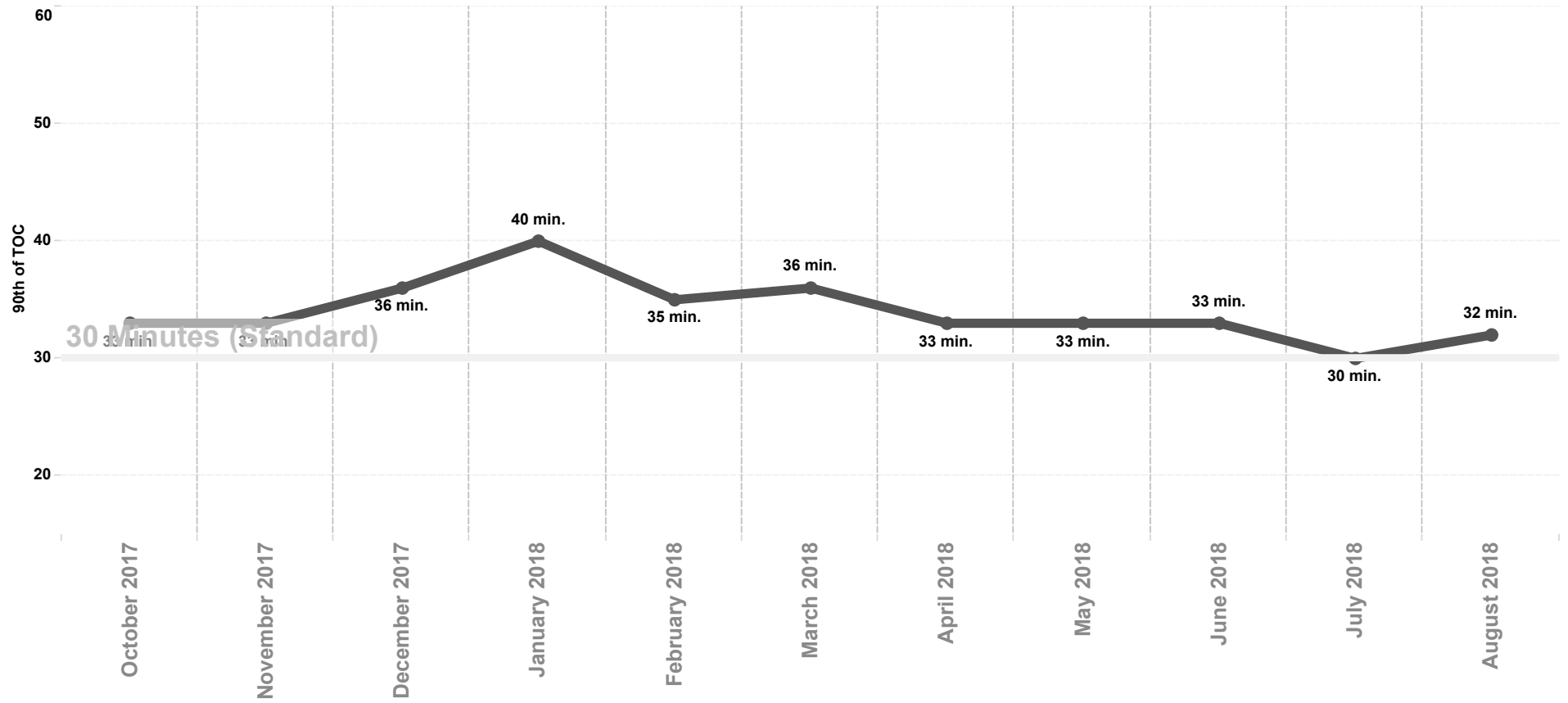
# Wall Times (TOC) 2016 By Month - East County & South County

Previous 8 Months | 90th Percentile



# APOT All Hospitals

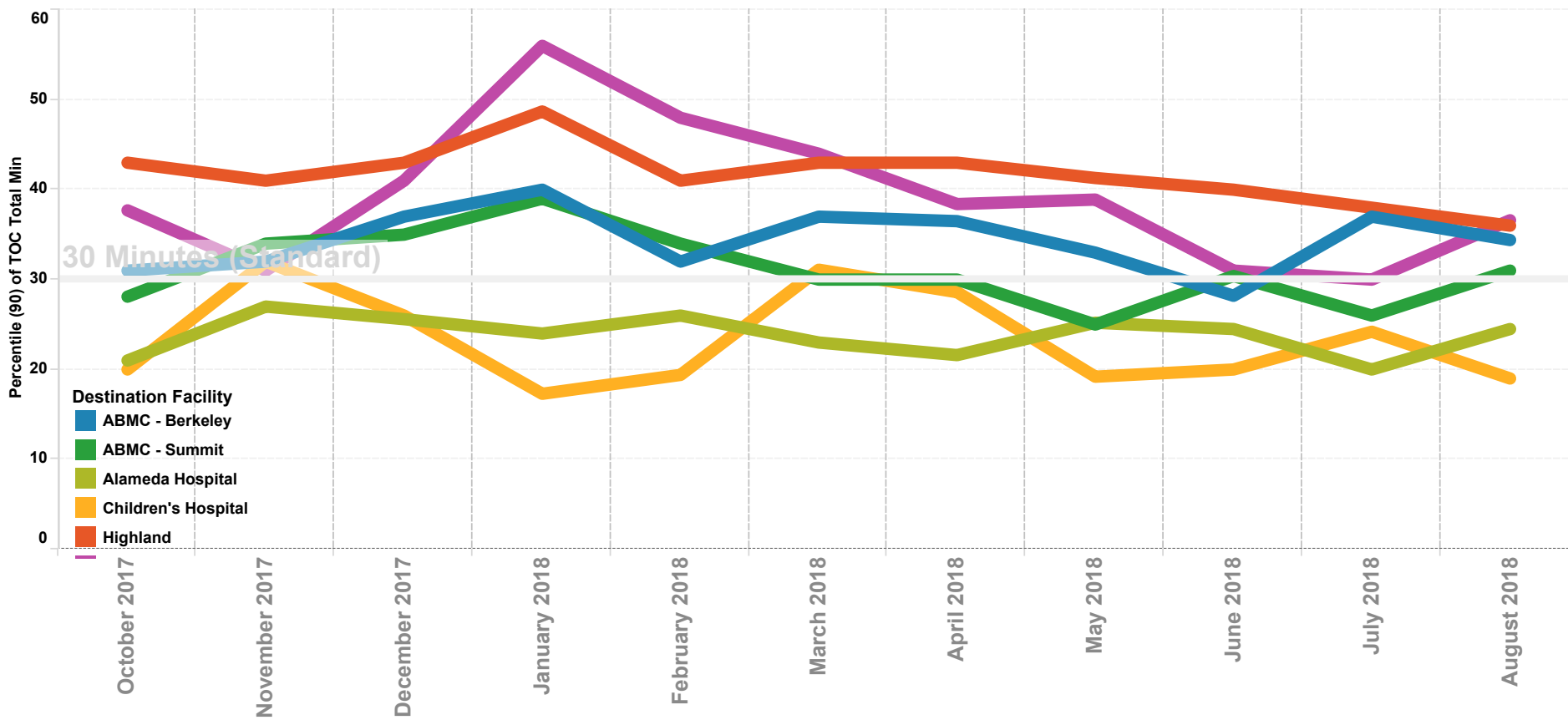
Previous 12 Months | 90th Percentile





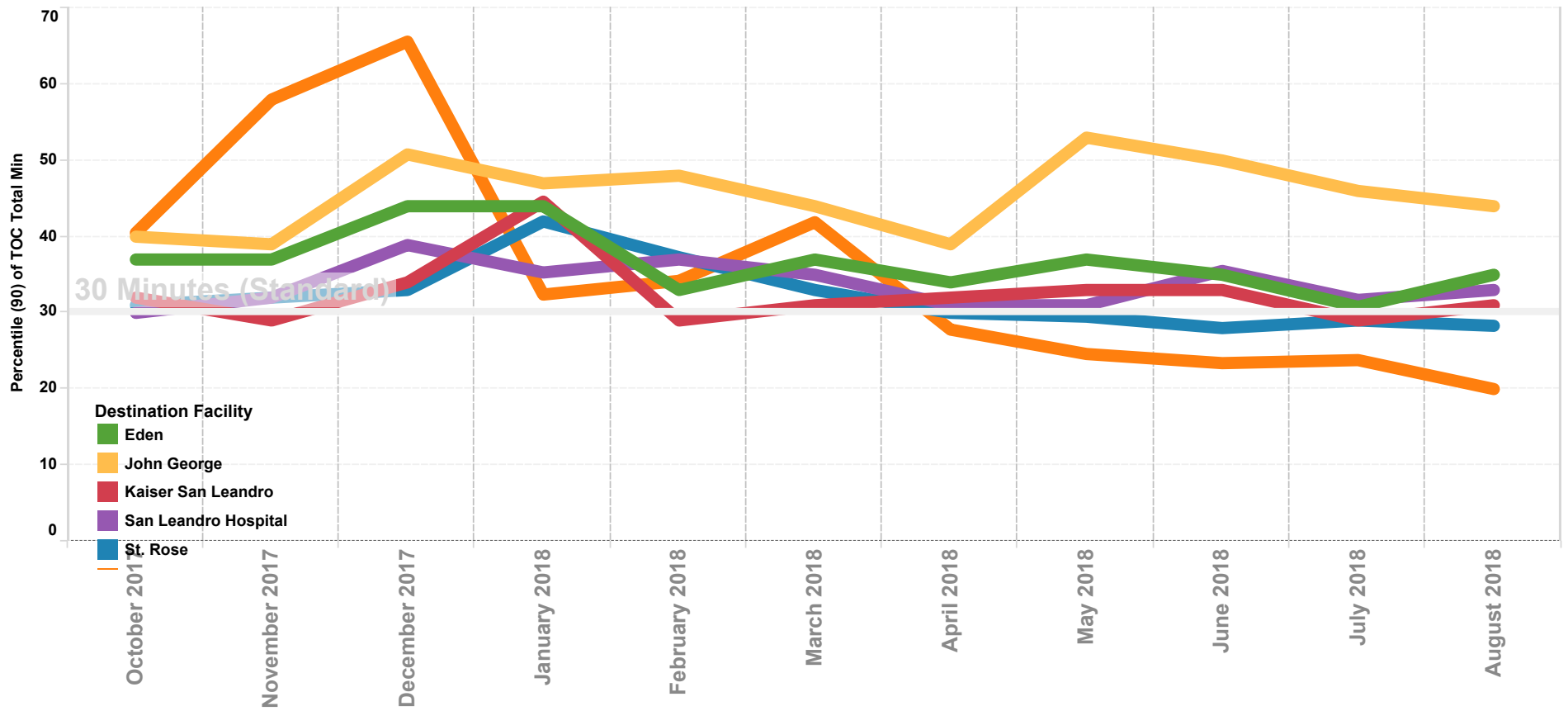
# APOT North County

Previous 12 Months | 90th Percentile



# APOT Mid County

Previous 12 Months | 90th Percentile



# APOT South and East County

Previous 12 Months | 90th Percentile

