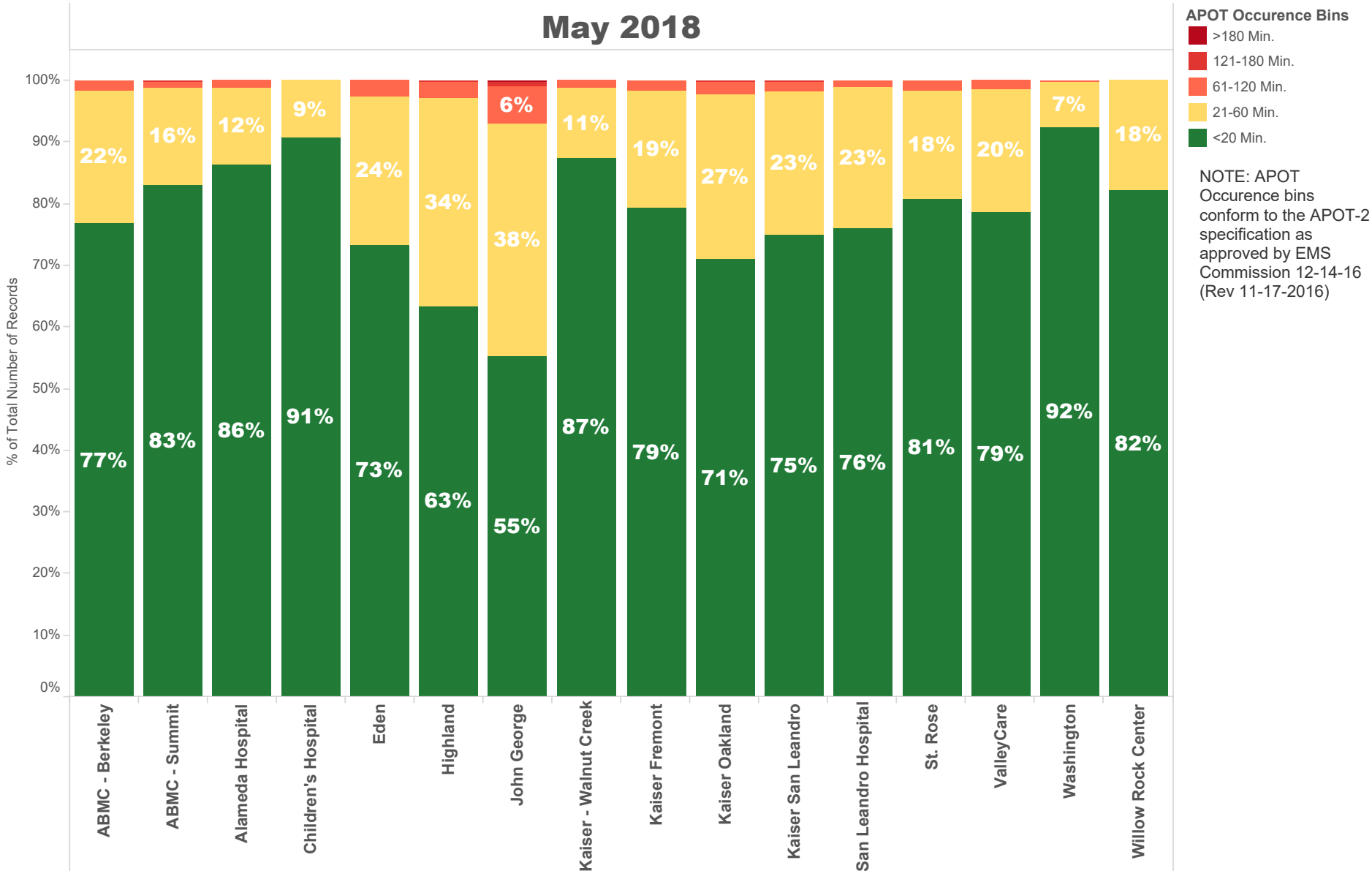


# May 2018

NOTE: The **90th percentile** is the value for which 90% of the data points are smaller.

<b>Destination Facility</b>	Rank (Composite)	Avg. TOC	90th Percentile TOC	APOD >60 min	APOD % of N	N = Number of Transports
Kaiser - Walnut Creek	3	13 min.	22.7 min.	2	1%	174
ABMC - Berkeley	6	17 min.	33.0 min.	8	2%	491
John George	11	24 min.	53.0 min.	33	8%	437
Alameda Hospital	4	12 min.	25.2 min.	2	1%	169
Children's Hospital	1	10 min.	19.2 min.	0	0%	139
San Leandro Hospital	4	16 min.	31.0 min.	7	1%	610
Washington	1	12 min.	19.0 min.	2	0%	823
Kaiser Fremont	7	16 min.	31.4 min.	9	2%	487
ABMC - Summit	4	14 min.	25.0 min.	15	1%	1,113
ValleyCare	6	16 min.	34.3 min.	8	1%	578
Kaiser Oakland	9	19 min.	38.9 min.	15	2%	622
Kaiser San Leandro	8	18 min.	33.0 min.	16	2%	754
Eden	9	18 min.	37.0 min.	25	3%	928
Highland	10	21 min.	41.3 min.	37	3%	1,218
St. Rose	5	15 min.	29.5 min.	7	2%	416
Willow Rock Center	2	13 min.	24.6 min.	0	0%	45

# May 2018



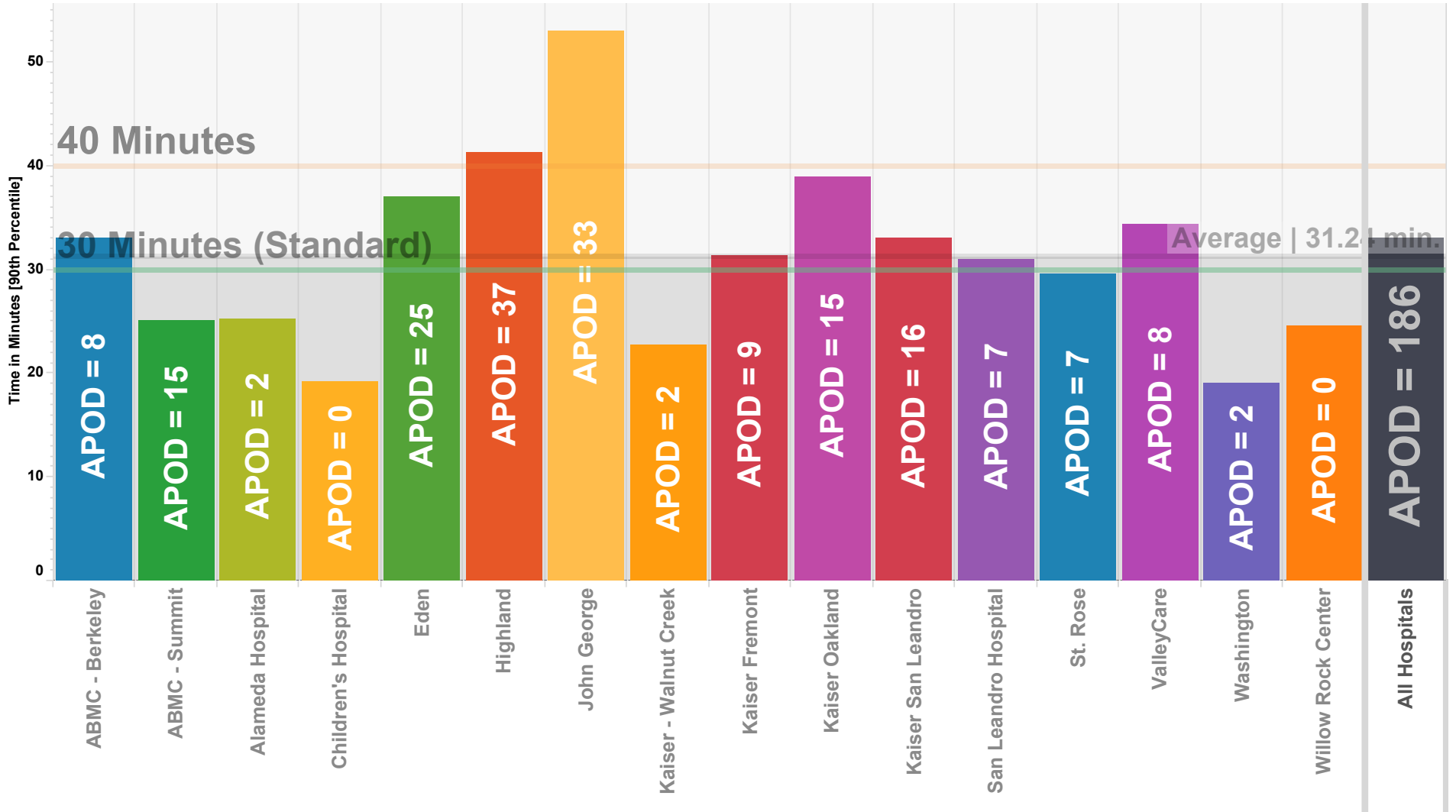
# May 2018

	ABMC - Berkeley	ABMC - Summit	Alameda Hospital	Children's Hospital	Eden	Highland	John George	Kaiser - Walnut Creek	Kaiser Fremont	Kaiser Oakland	Kaiser San Leandro	San Leandro Hospital	St. Rose	ValleyCare	Washington	Willow Rock Center
<b>APOT Occurrence Bins</b>																
<b>21-60 Min.</b>	21.6% 106	15.8% 176	12.4% 21	9.4% 13	24.0% 223	33.7% 410	37.5% 164	11.5% 20	19.1% 93	26.7% 166	23.2% 175	23.0% 140	17.5% 73	19.9% 115	7.4% 61	17.8% 8
<b>61-120 Min.</b>	1.6% 8	1.1% 12	1.2% 2		2.7% 25	2.7% 33	6.2% 27	1.1% 2	1.6% 8	2.1% 13	1.7% 13	1.0% 6	1.7% 7	1.4% 8	0.2% 2	
<b>121-180 Min.</b>		0.1% 1				0.2% 3	0.7% 3			0.2% 1	0.1% 1					
<b>&lt;20 Min.</b>	76.8% 377	83.0% 924	86.4% 146	90.6% 126	73.3% 680	63.4% 772	55.4% 242	87.4% 152	79.3% 386	71.1% 442	74.9% 565	76.1% 464	80.8% 336	78.7% 455	92.3% 760	82.2% 37
<b>&gt;180 Min.</b>							0.2% 1									

NOTE: APOT Occurrence bins conform to the APOT-2 specification as approved by EMS Commission 12-14-16 (Rev 11-17-2016)

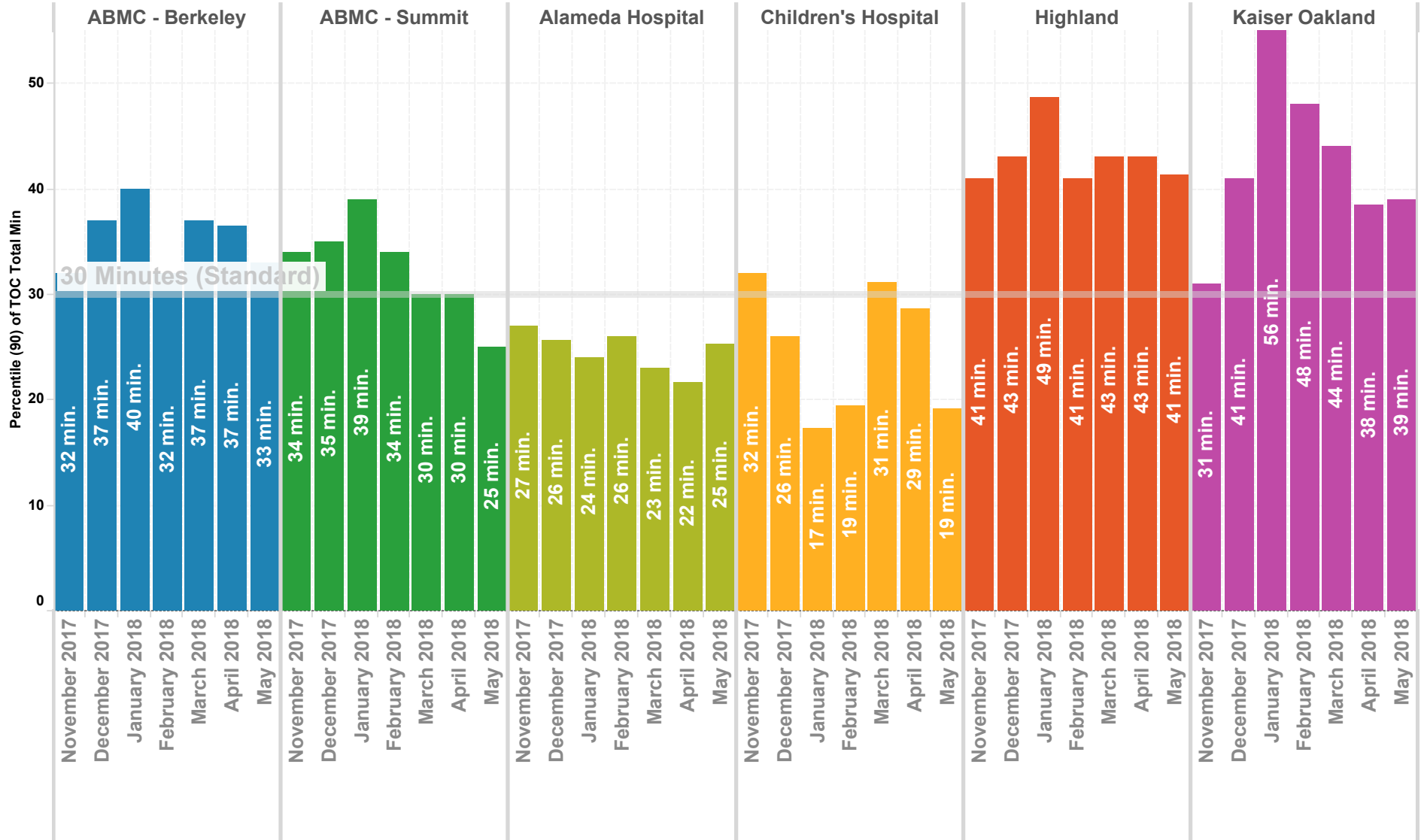
# Ambulance Patient Offload Times (APOT) May 2018 90th Percentile

NOTE: The **90th percentile** is the value for which 90% of the data points are smaller.



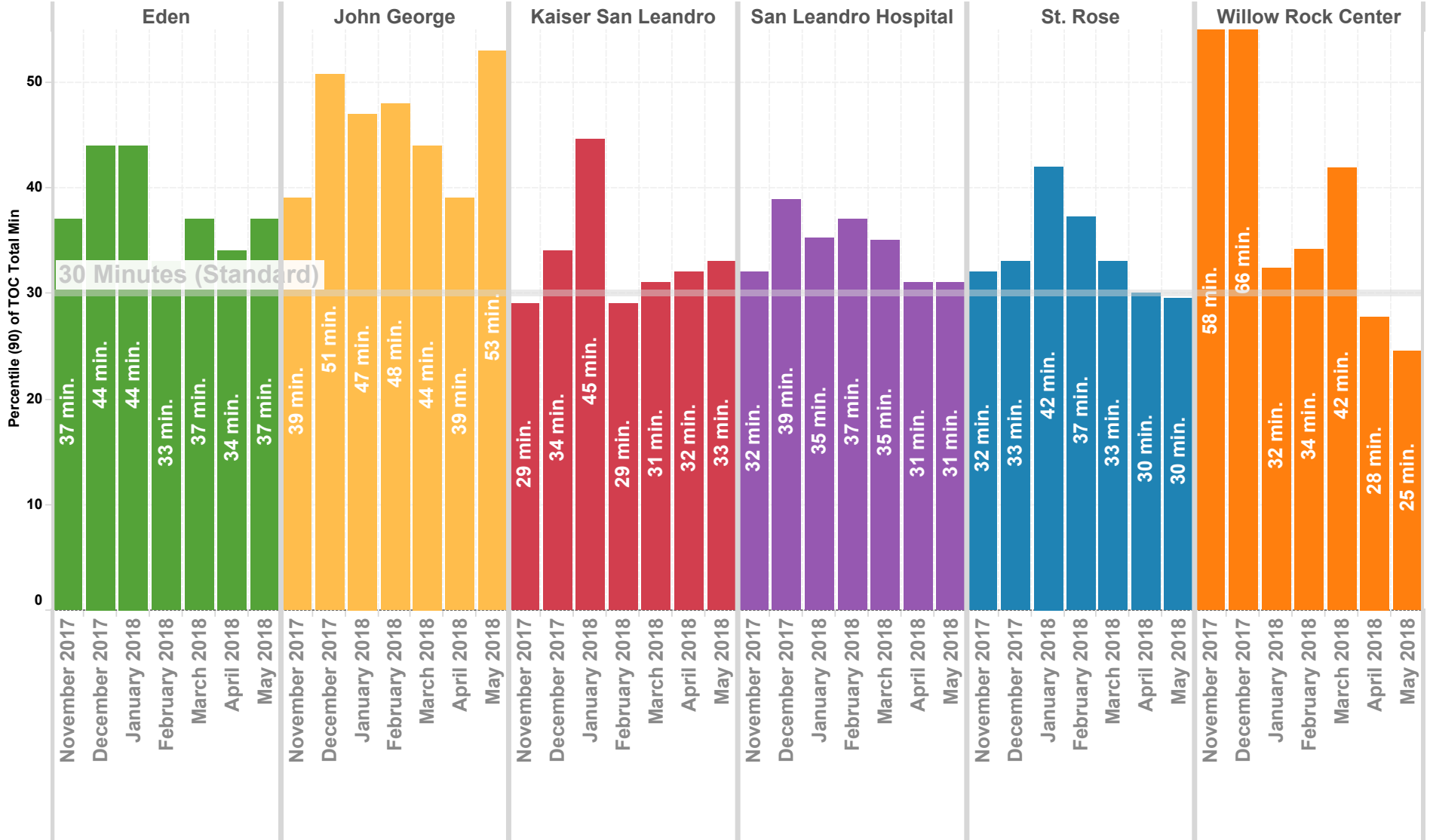
# Wall Times (TOC) 2016 By Month - North County

Previous 8 Months | 90th Percentile



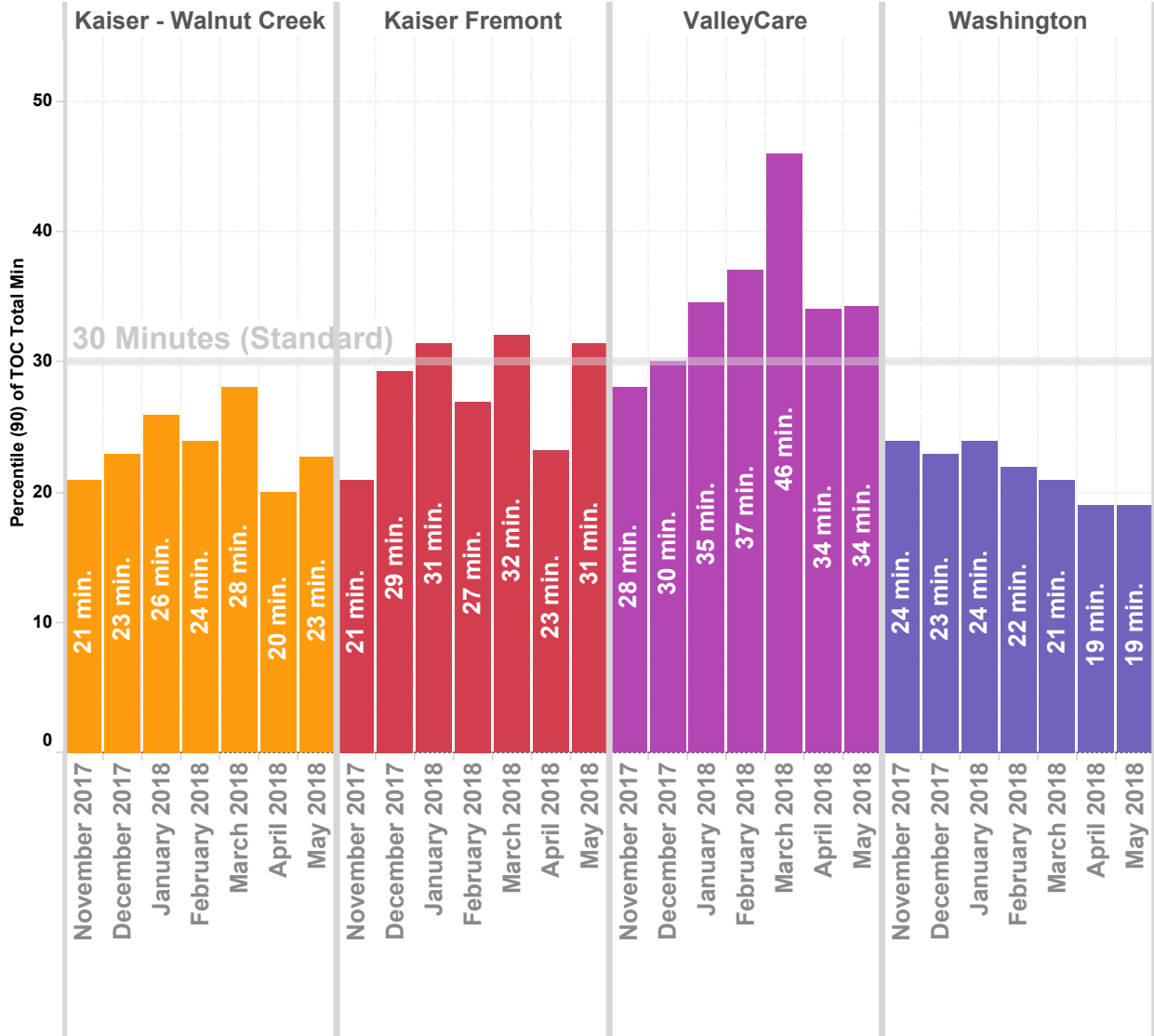
# Wall Times (TOC) 2016 By Month - Mid County

Previous 8 Months | 90th Percentile



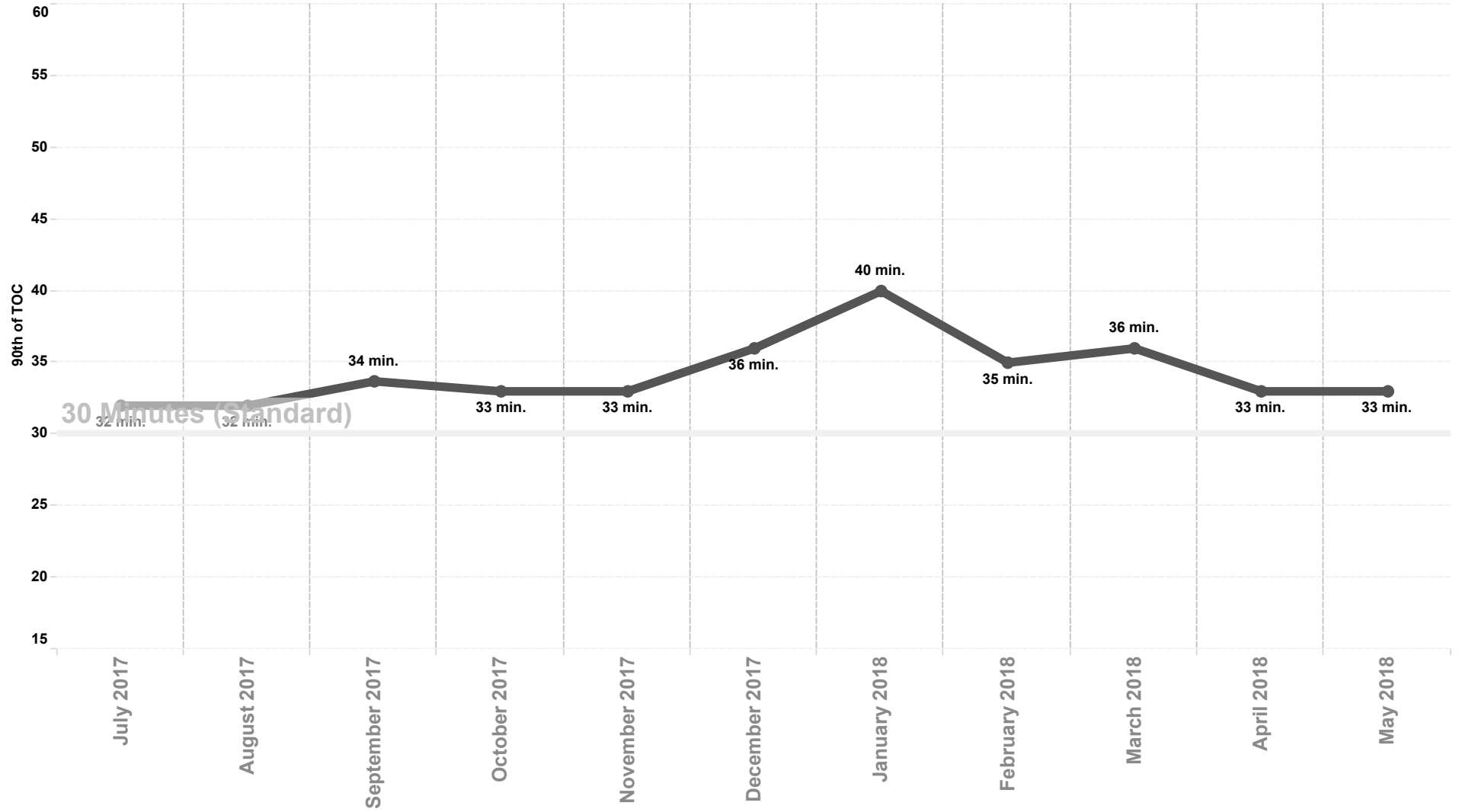
# Wall Times (TOC) 2016 By Month - East County & South County

Previous 8 Months | 90th Percentile



# APOT All Hospitals

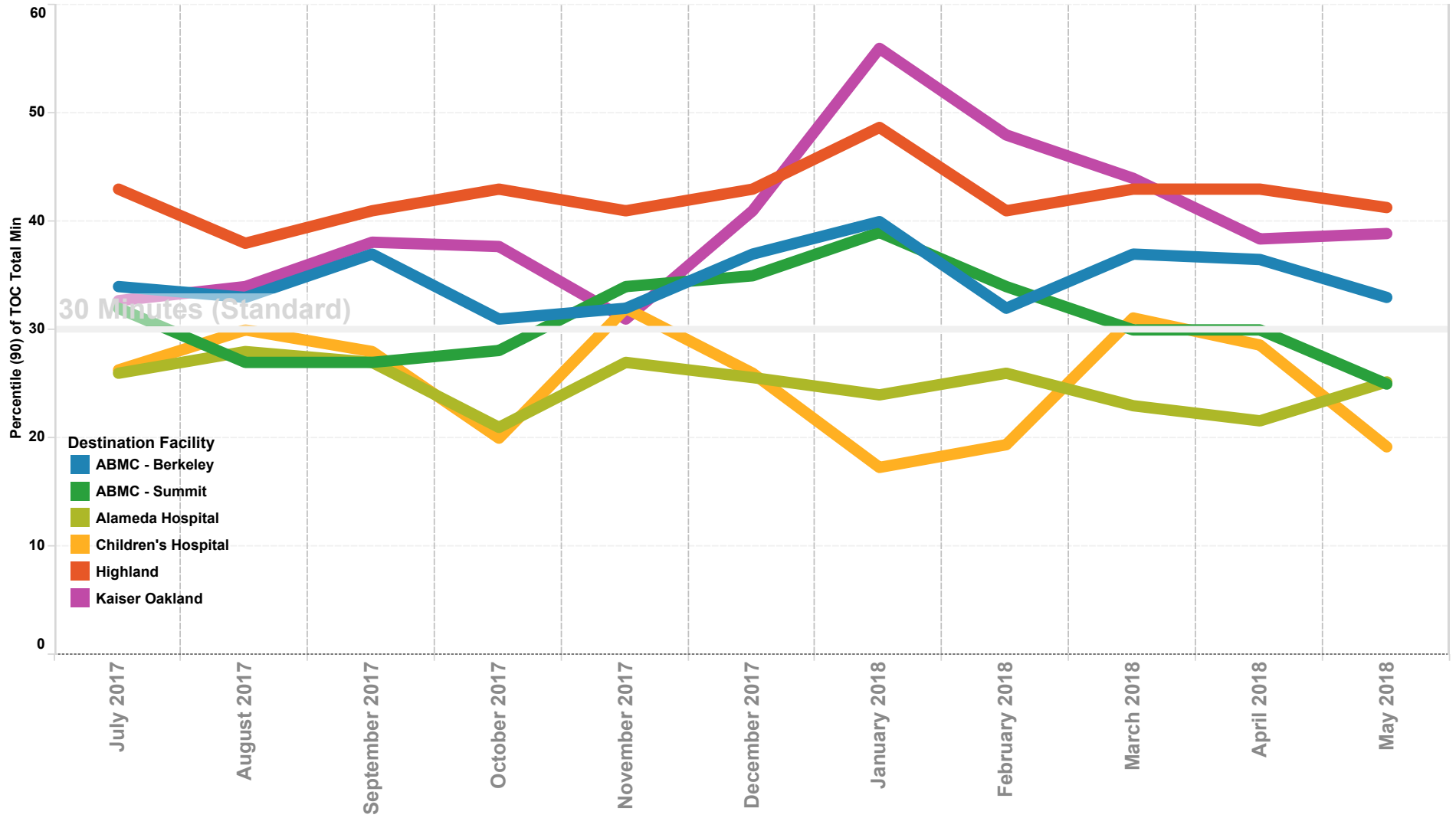
Previous 12 Months | 90th Percentile





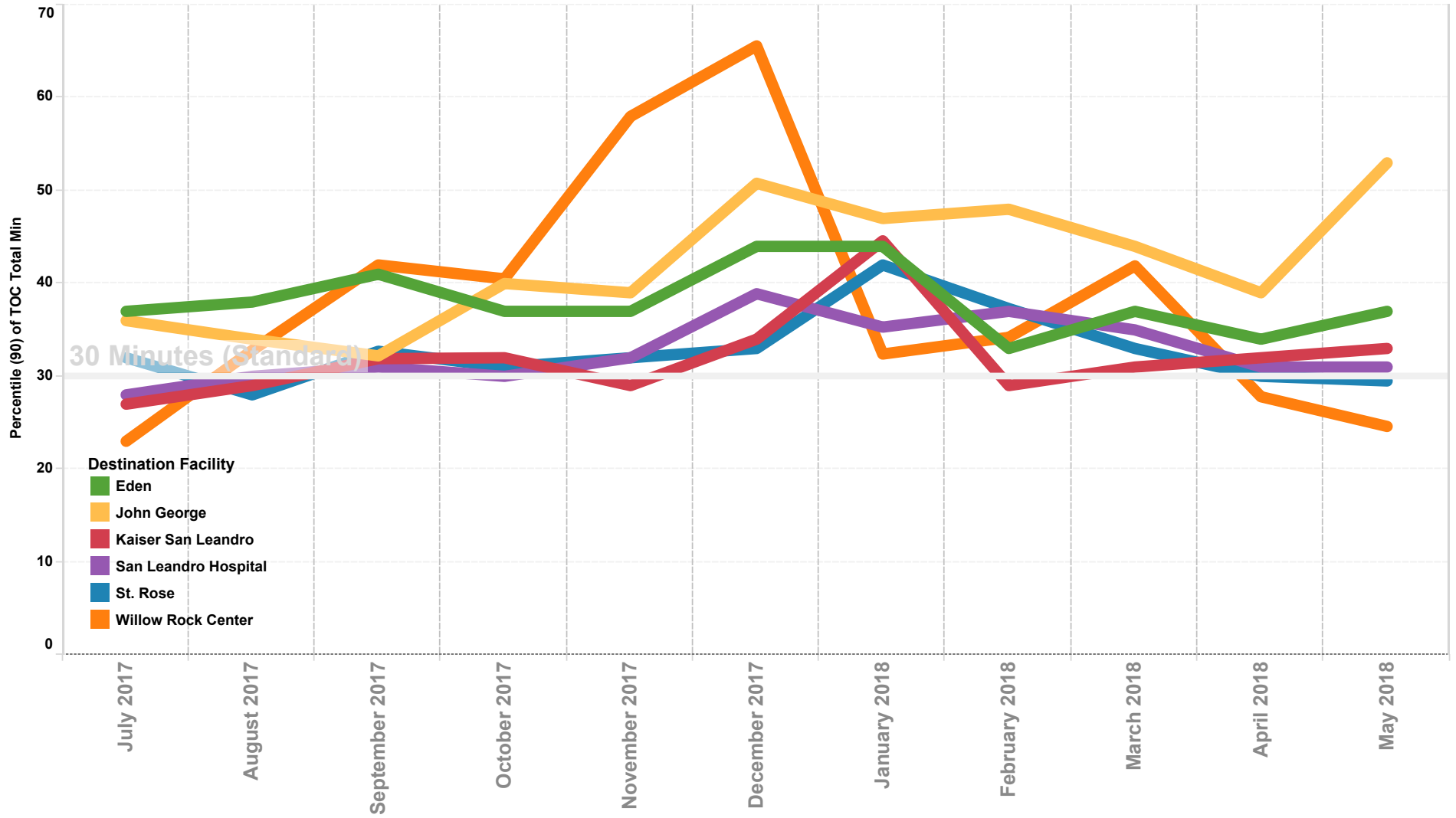
# APOT North County

Previous 12 Months | 90th Percentile



# APOT Mid County

Previous 12 Months | 90th Percentile



# APOT South and East County

Previous 12 Months | 90th Percentile

