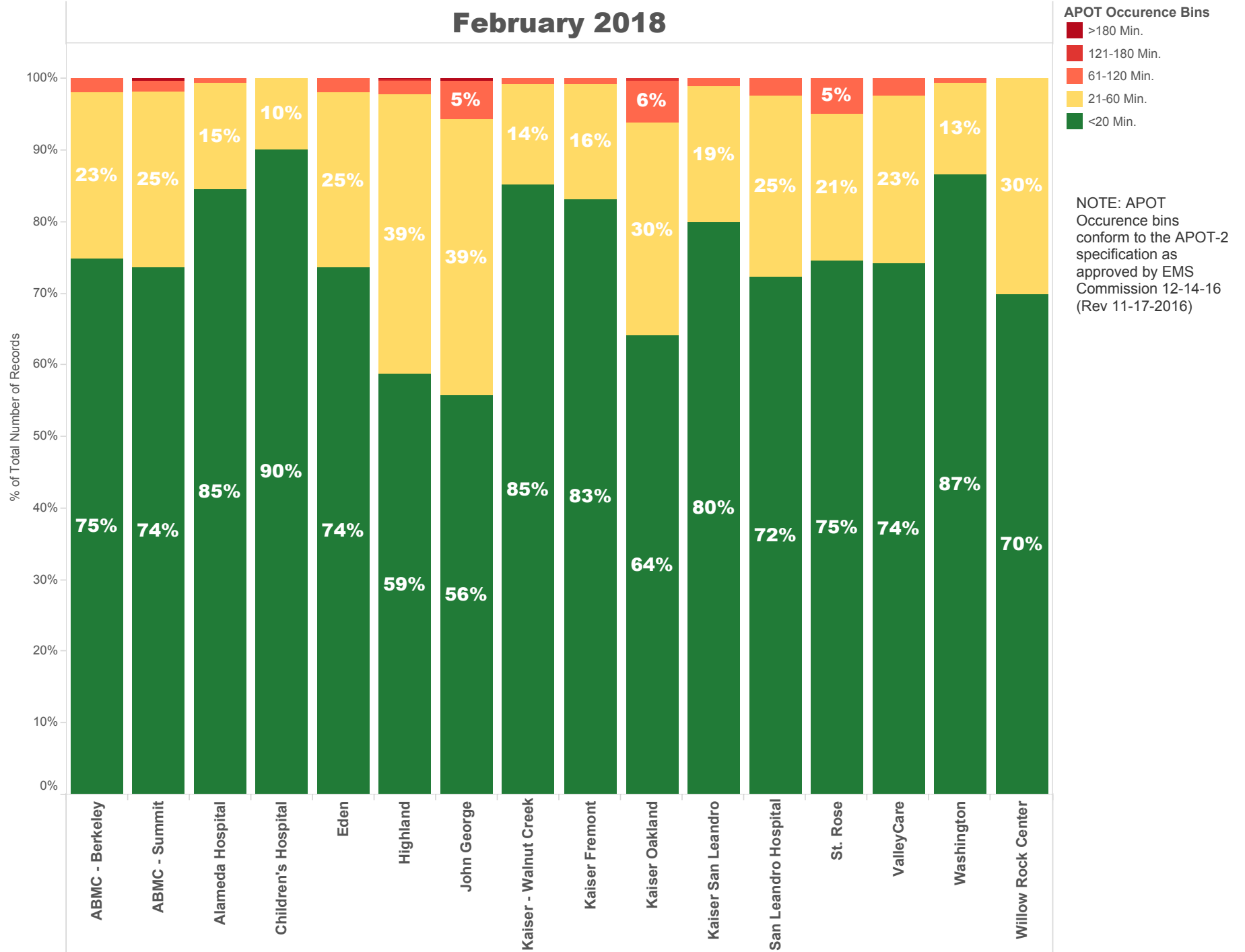


February 2018

NOTE: The **90th percentile** is the value for which 90% of the data points are smaller.

Destination Facility	Rank (Composite)	Avg. TOC	90th Percentile TOC	APOD >60 min	APOD % of N	N = Number of Transports
Kaiser - Walnut Creek	3	13 min.	24.0 min.	1	1%	149
ABMC - Berkeley	7	17 min.	32.0 min.	9	2%	486
John George	12	24 min.	48.0 min.	22	6%	353
Alameda Hospital	3	12 min.	26.0 min.	1	1%	176
Children's Hospital	1	11 min.	17.0 min.	0	0%	153
San Leandro Hospital	10	18 min.	37.0 min.	15	2%	604
Washington	2	13 min.	22.0 min.	4	1%	776
Kaiser Fremont	4	14 min.	27.0 min.	4	1%	495
ABMC - Summit	8	18 min.	34.0 min.	21	2%	1,092
ValleyCare	9	17 min.	37.0 min.	13	2%	525
Kaiser Oakland	13	23 min.	48.0 min.	38	6%	608
Kaiser San Leandro	6	16 min.	29.0 min.	9	1%	712
Eden	7	17 min.	33.0 min.	14	2%	786
Highland	10	21 min.	41.0 min.	26	2%	1,062
St. Rose	11	19 min.	37.9 min.	20	5%	412
Willow Rock Center	5	16 min.	34.2 min.	0	0%	40

February 2018



February 2018

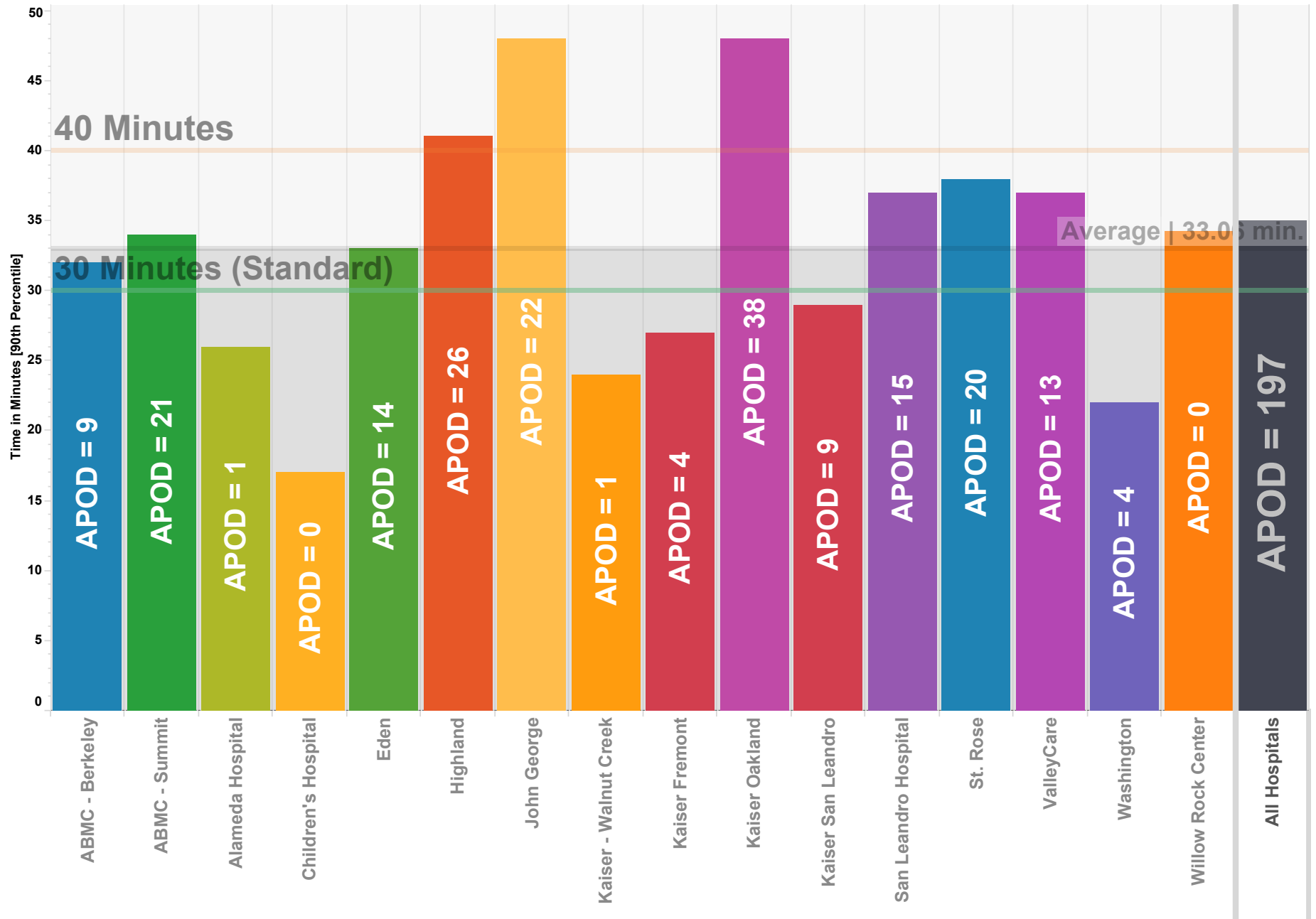
	ABMC - Berkeley	ABMC - Summit	Alameda Hospital	Children's Hospital	Eden	Highland	John George	Kaiser - Walnut Creek	Kaiser Fremont	Kaiser Oakland	Kaiser San Leandro	San Leandro Hospital	St. Rose	ValleyCare	Washington	Willow Rock Center
APOT Occurrence Bins																
21-60 Min.	23.3% 113	24.5% 268	14.8% 26	9.8% 15	24.7% 194	39.1% 415	38.5% 136	14.1% 21	16.0% 79	29.8% 181	19.0% 135	25.3% 153	20.6% 85	23.4% 123	12.8% 99	30.0% 12
61-120 Min.	1.9% 9	1.7% 19	0.6% 1		1.8% 14	2.0% 21	5.4% 19	0.7% 1	0.8% 4	5.8% 35	1.1% 8	2.3% 14	4.9% 20	2.3% 12	0.5% 4	
121-180 Min.						0.1% 1				0.3% 2						
<20 Min.	74.9% 364	73.5% 803	84.7% 149	90.2% 138	73.5% 578	58.8% 624	55.8% 197	85.2% 127	83.2% 412	64.1% 390	79.9% 569	72.4% 437	74.5% 307	74.3% 390	86.7% 673	70.0% 28
>180 Min.		0.2% 2				0.1% 1	0.3% 1									

NOTE: APOT Occurrence bins conform to the APOT-2 specification as approved by EMS Commission 12-14-16 (Rev 11-17-2016)

Ambulance Patient Offload Times (APOT) February 2018

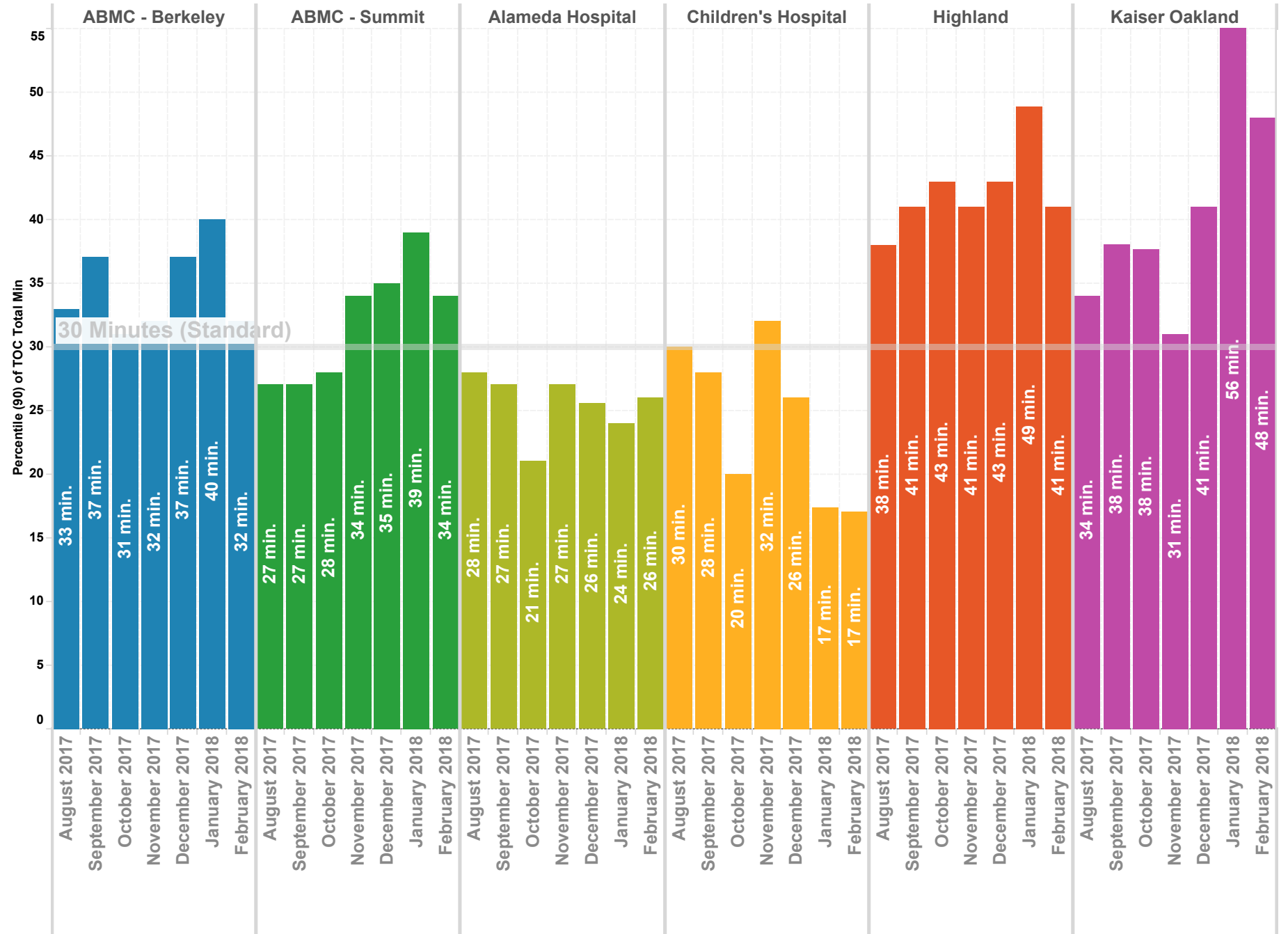
90th Percentile

NOTE: The **90th percentile** is the value for which 90% of the data points are smaller.



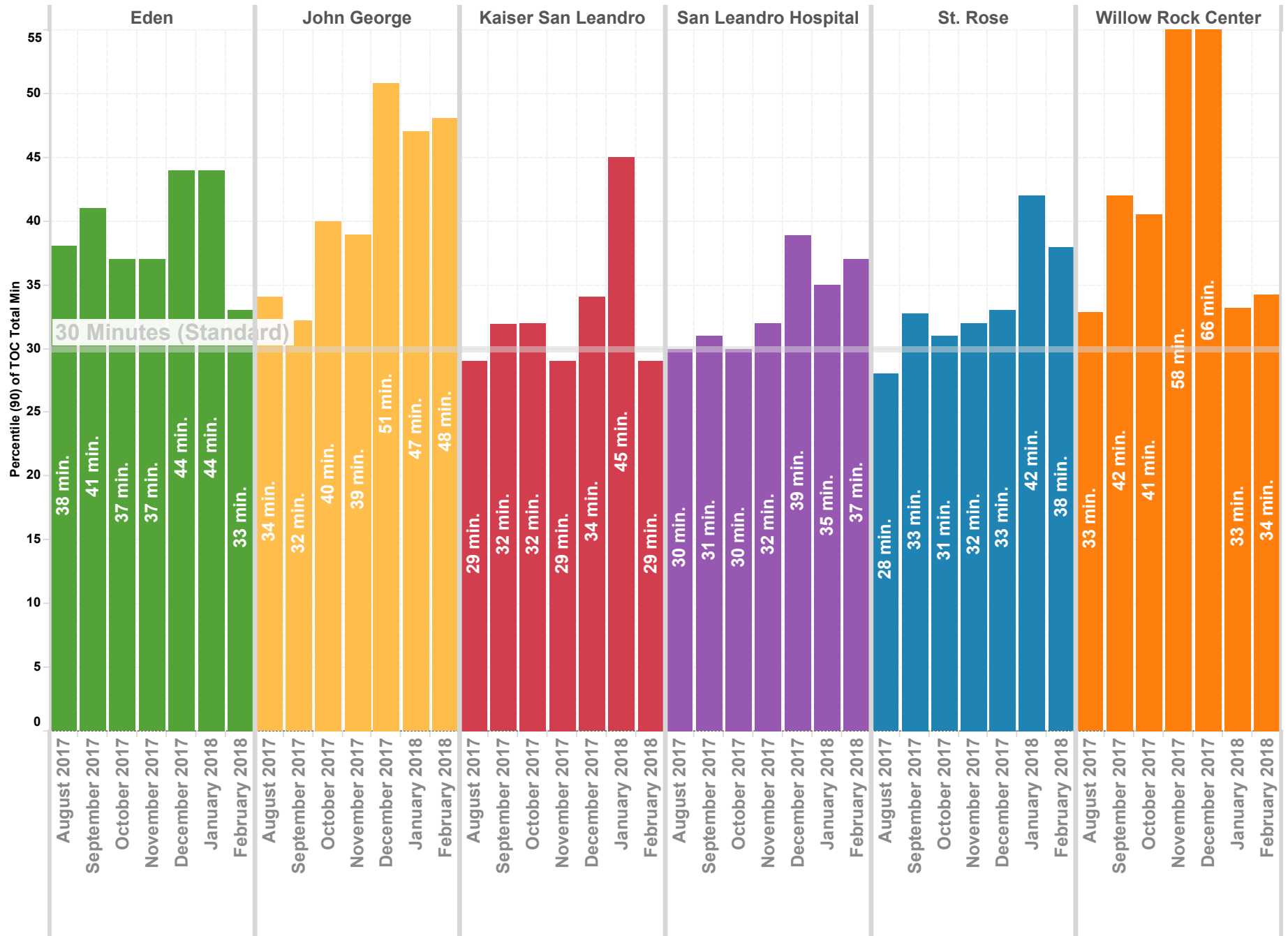
Wall Times (TOC) 2016 By Month - North County

Previous 8 Months | 90th Percentile



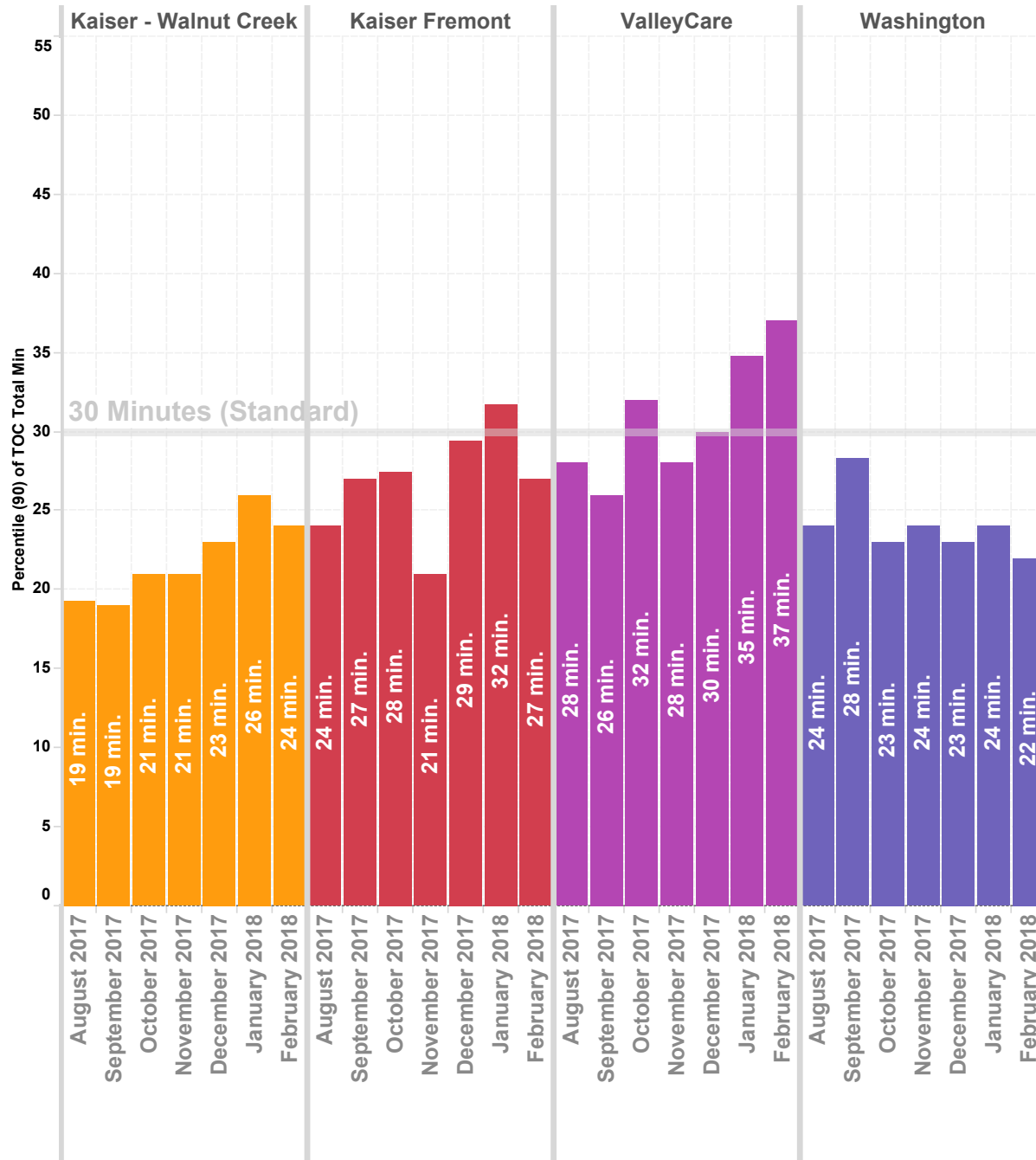
Wall Times (TOC) 2016 By Month - Mid County

Previous 8 Months | 90th Percentile



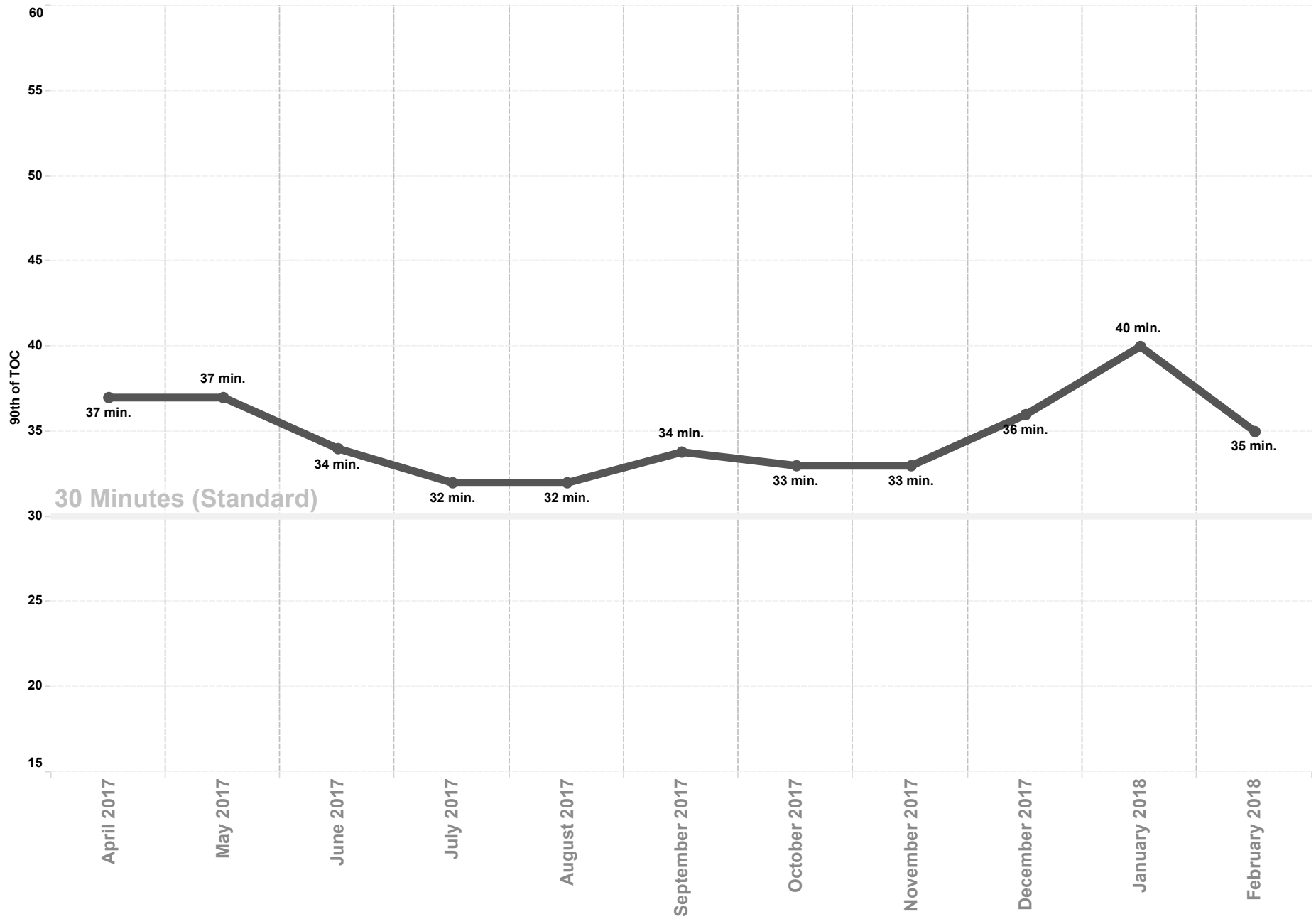
Wall Times (TOC) 2016 By Month - East County & South County

Previous 8 Months | 90th Percentile



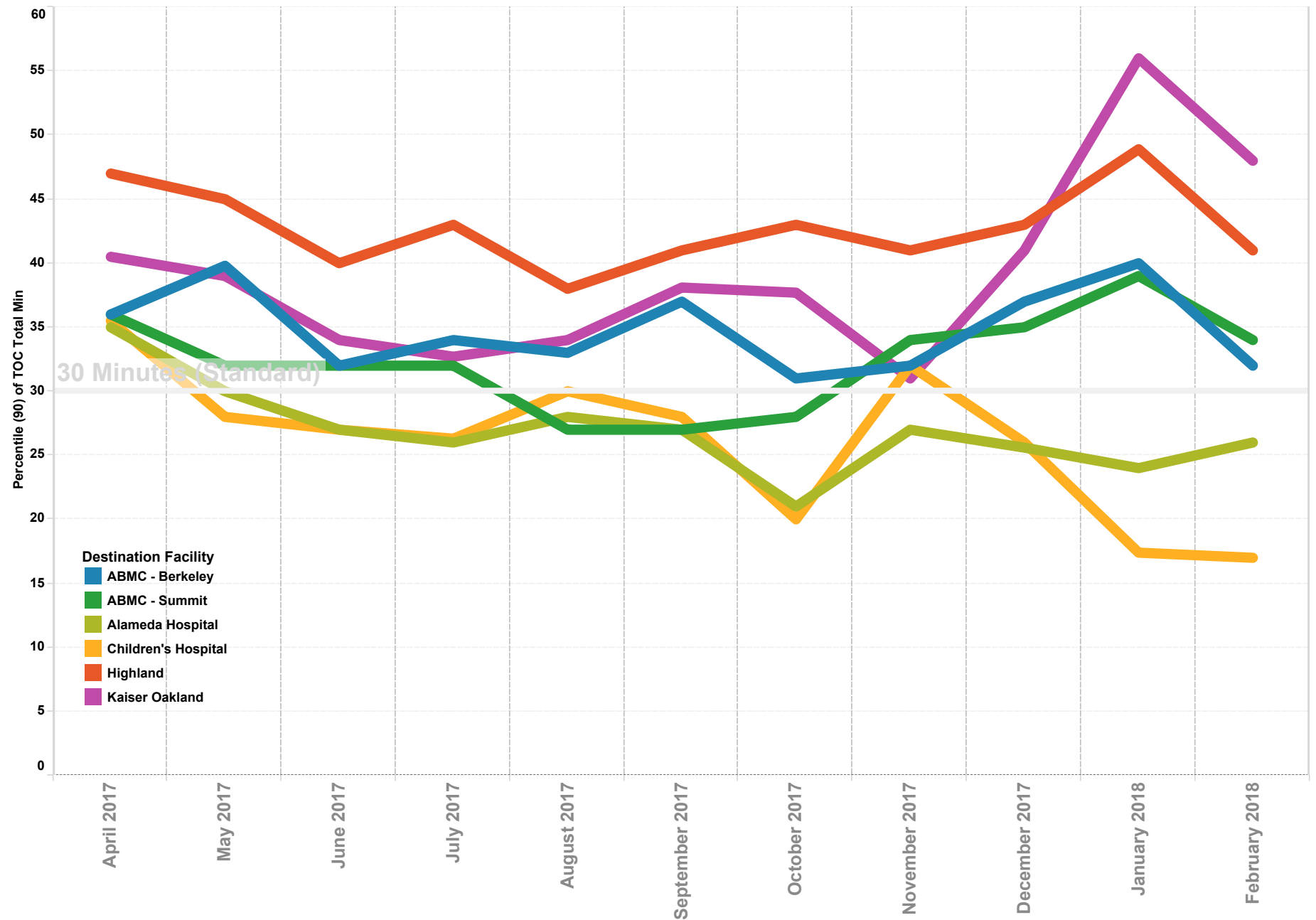
APOT All Hospitals

Previous 12 Months | 90th Percentile



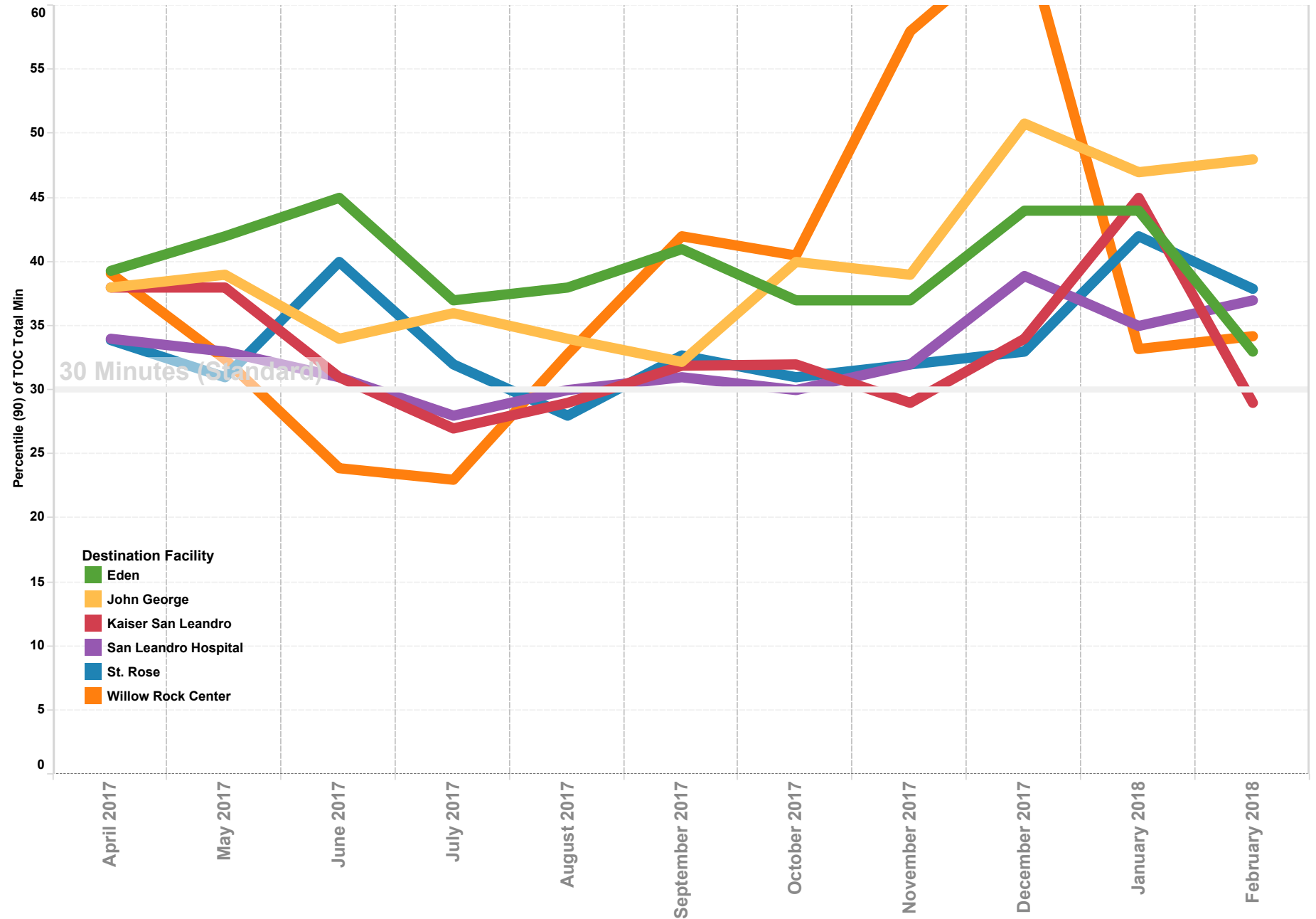
APOT North County

Previous 12 Months | 90th Percentile



APOT Mid County

Previous 12 Months | 90th Percentile



APOT South and East County

Previous 12 Months | 90th Percentile

