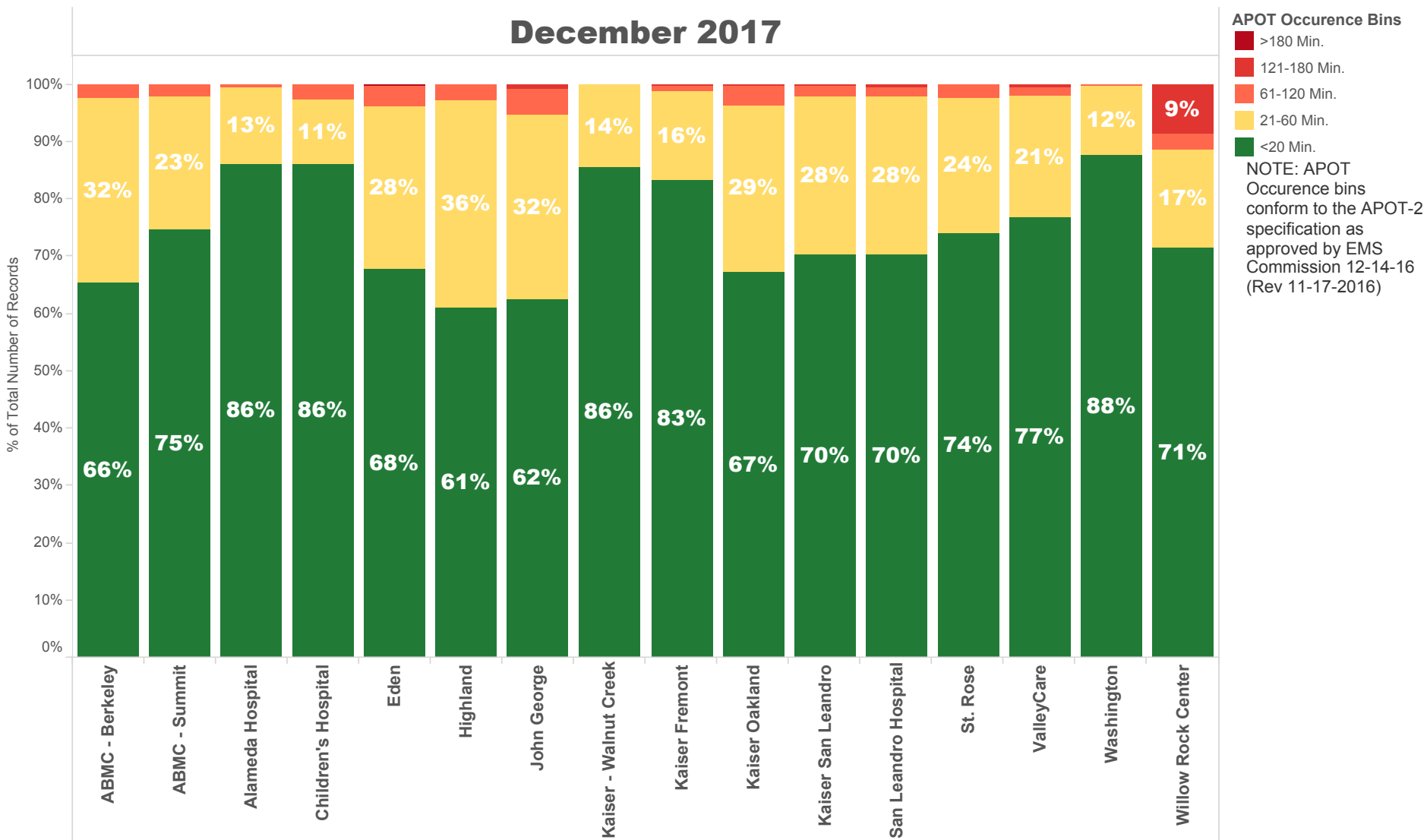


December 2017

NOTE: The 90th percentile is the value for which 90% of the data points are smaller.

Destination Facility	Rank (Composite)	Avg. TOC	90th Percentile TOC	APOD >60 min	APOD % of N	N = Number of Transports
Kaiser - Walnut Creek	1	13 min.	23.0 min.	0	0%	152
ABMC - Berkeley	7	19 min.	38.0 min.	12	2%	499
John George	10	22 min.	51.0 min.	23	6%	393
Alameda Hospital	3	11 min.	27.7 min.	1	1%	172
Children's Hospital	5	13 min.	25.7 min.	3	3%	114
San Leandro Hospital	6	18 min.	37.0 min.	16	2%	678
Washington	2	13 min.	23.0 min.	2	0%	865
Kaiser Fremont	3	14 min.	27.0 min.	6	1%	482
ABMC - Summit	7	17 min.	34.0 min.	29	2%	1,177
ValleyCare	4	16 min.	30.0 min.	10	2%	536
Kaiser Oakland	8	20 min.	41.0 min.	25	4%	641
Kaiser San Leandro	5	18 min.	34.0 min.	16	2%	728
Eden	9	20 min.	43.3 min.	39	4%	948
Highland	8	21 min.	42.0 min.	33	3%	1,129
St. Rose	6	18 min.	33.0 min.	10	2%	407
Willow Rock Center	11	28 min.	63.0 min.	4	11%	35

December 2017



December 2017

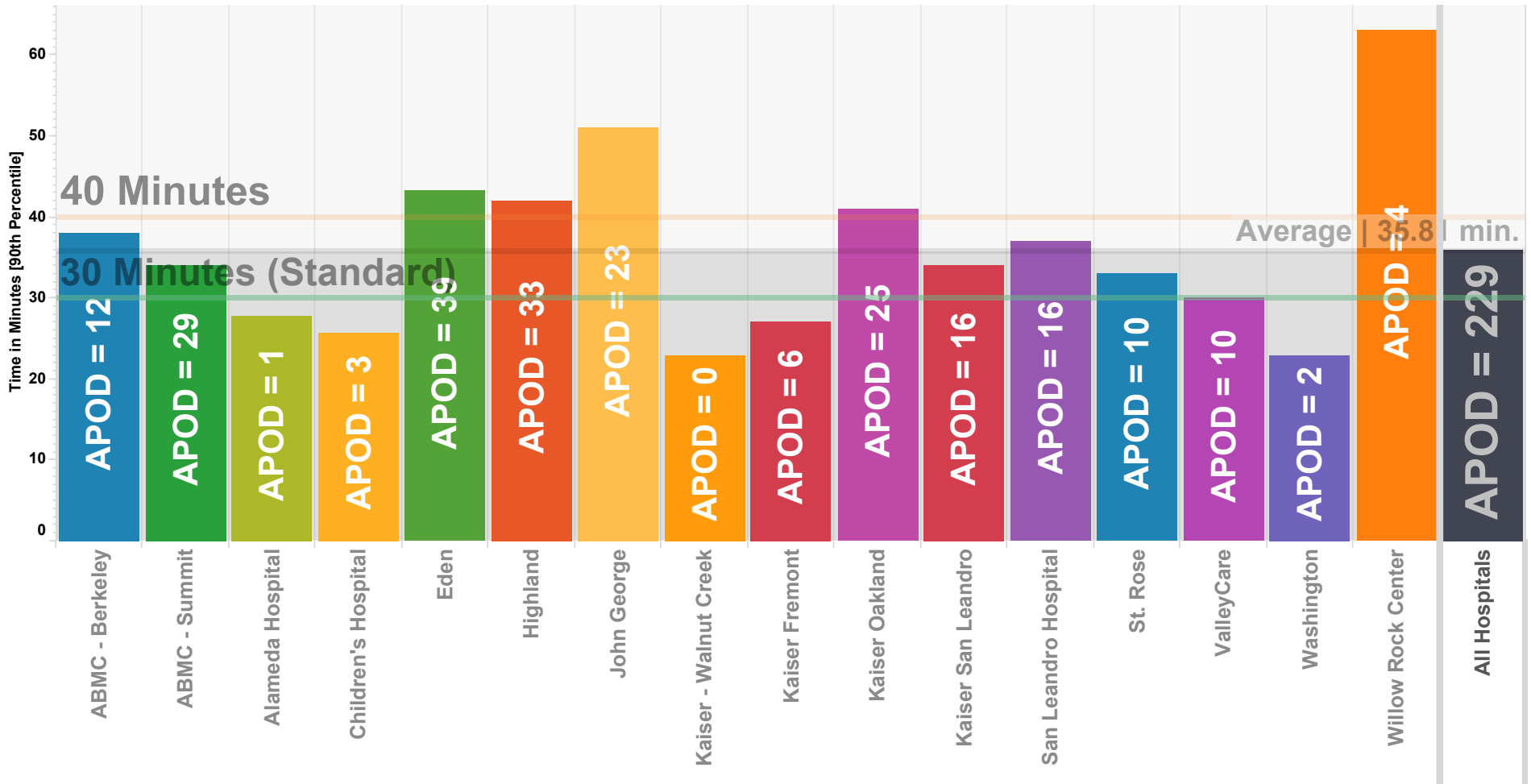
	ABMC - Berkeley	ABMC - Summit	Alameda Hospital	Children's Hospital	Eden	Highland	John George	Kaiser - Walnut Creek	Kaiser Fremont	Kaiser Oakland	Kaiser San Leandro	San Leandro Hospital	St. Rose	ValleyCare	Washington	Willow Rock Center
APOT Occurrence Bins																
21-60 Min.	32.1% 160	23.2% 273	13.4% 23	11.4% 13	28.4% 269	36.1% 408	32.3% 127	14.5% 22	15.6% 75	28.7% 184	27.6% 201	27.6% 187	23.6% 96	21.5% 115	12.3% 106	17.1% 6
61-120 Min.	2.4% 12	2.2% 26	0.6% 1	2.6% 3	3.7% 35	2.8% 32	4.6% 18		1.0% 5	3.7% 24	1.9% 14	1.6% 11	2.5% 10	1.3% 7	0.1% 1	2.9% 1
121-180 Min.					0.1% 1		0.8% 3		0.2% 1	0.2% 1	0.1% 1	0.4% 3		0.6% 3		8.6% 3
<20 Min.	65.5% 327	74.6% 878	86.0% 148	86.0% 98	67.7% 642	61.0% 689	62.3% 245	85.5% 130	83.2% 401	67.4% 432	70.3% 512	70.4% 477	74.0% 301	76.7% 411	87.6% 758	71.4% 25
>180 Min.					0.1% 1											

NOTE: APOT Occurrence bins conform to the APOT-2 specification as approved by EMS Commission 12-14-16 (Rev 11-17-2016)

Ambulance Patient Offload Times (APOT) December 2017

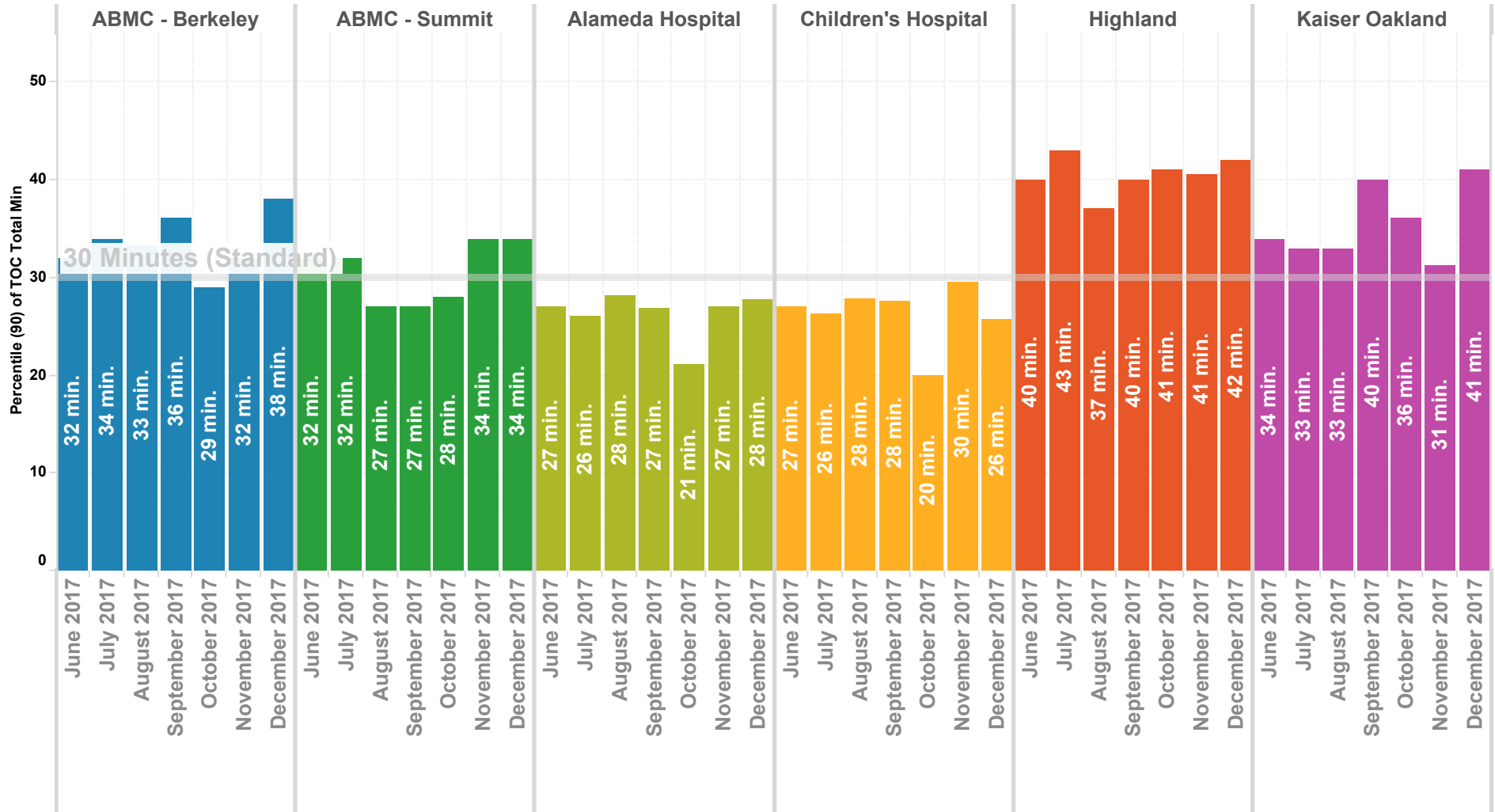
90th Percentile

NOTE: The 90th percentile is the value for which 90% of the data points are smaller.



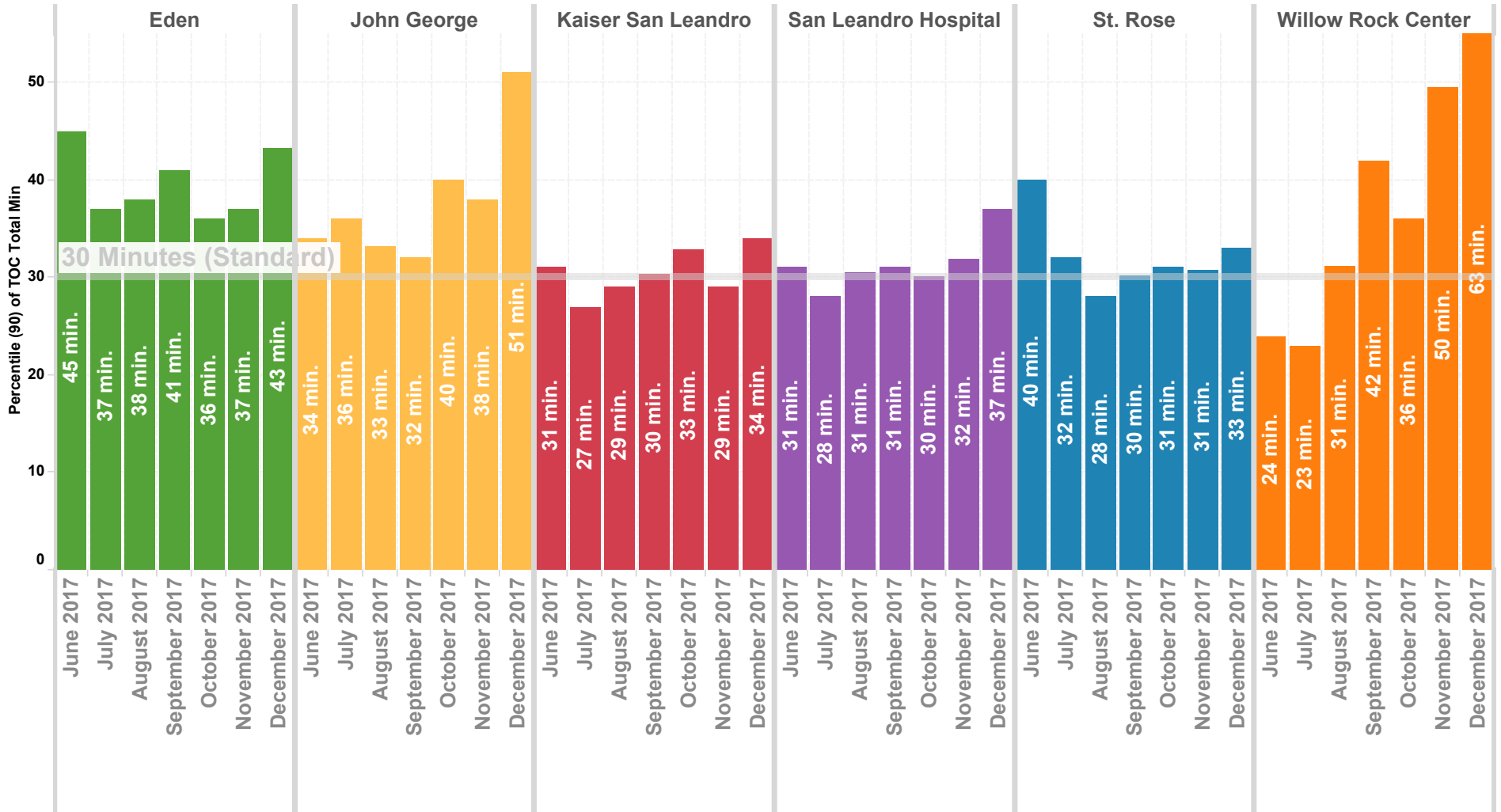
Wall Times (TOC) 2016 By Month - North County

Previous 8 Months | 90th Percentile



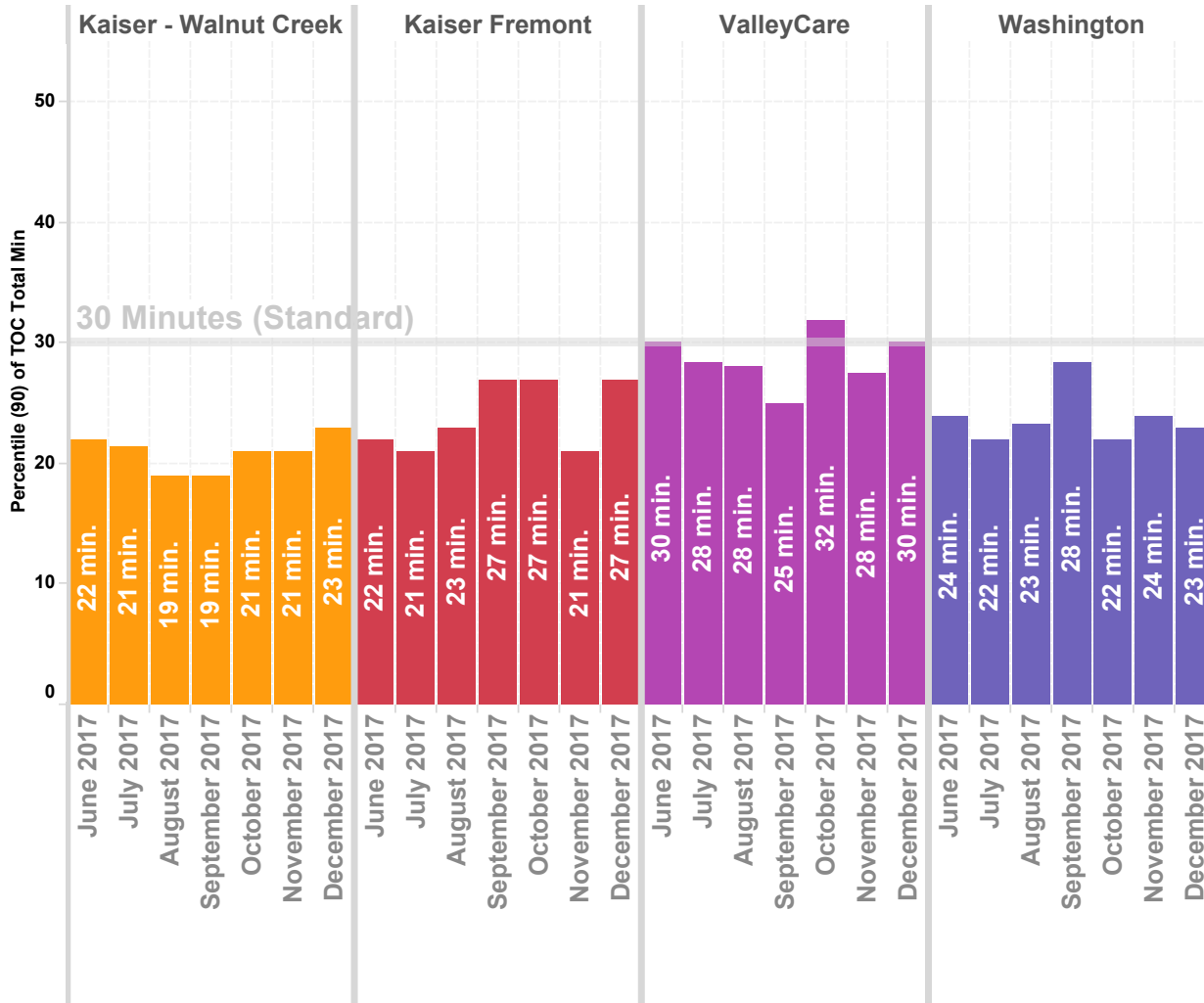
Wall Times (TOC) 2016 By Month - Mid County

Previous 8 Months | 90th Percentile



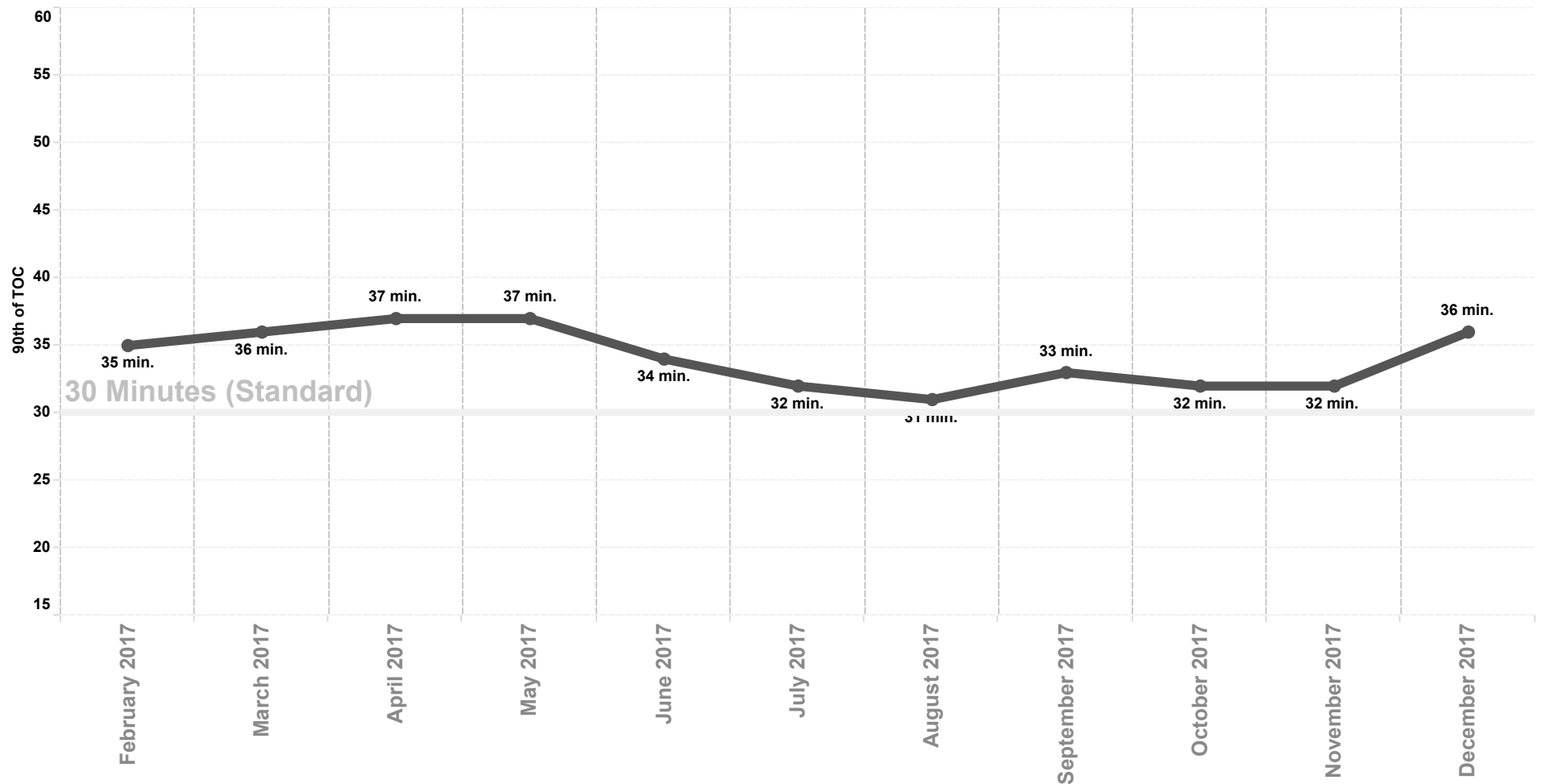
Wall Times (TOC) 2016 By Month - East County & South County

Previous 8 Months | 90th Percentile



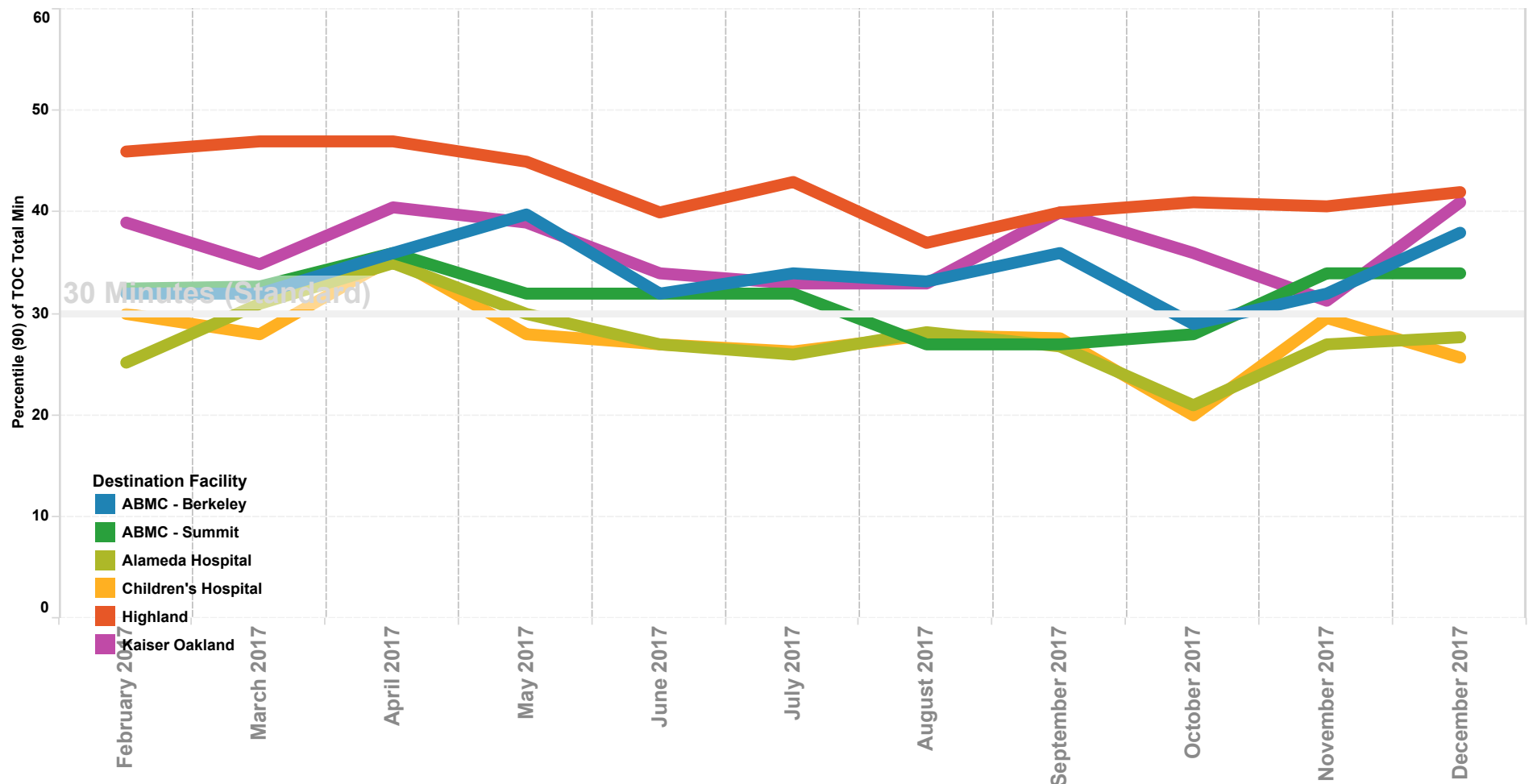
APOT All Hospitals

Previous 12 Months | 90th Percentile



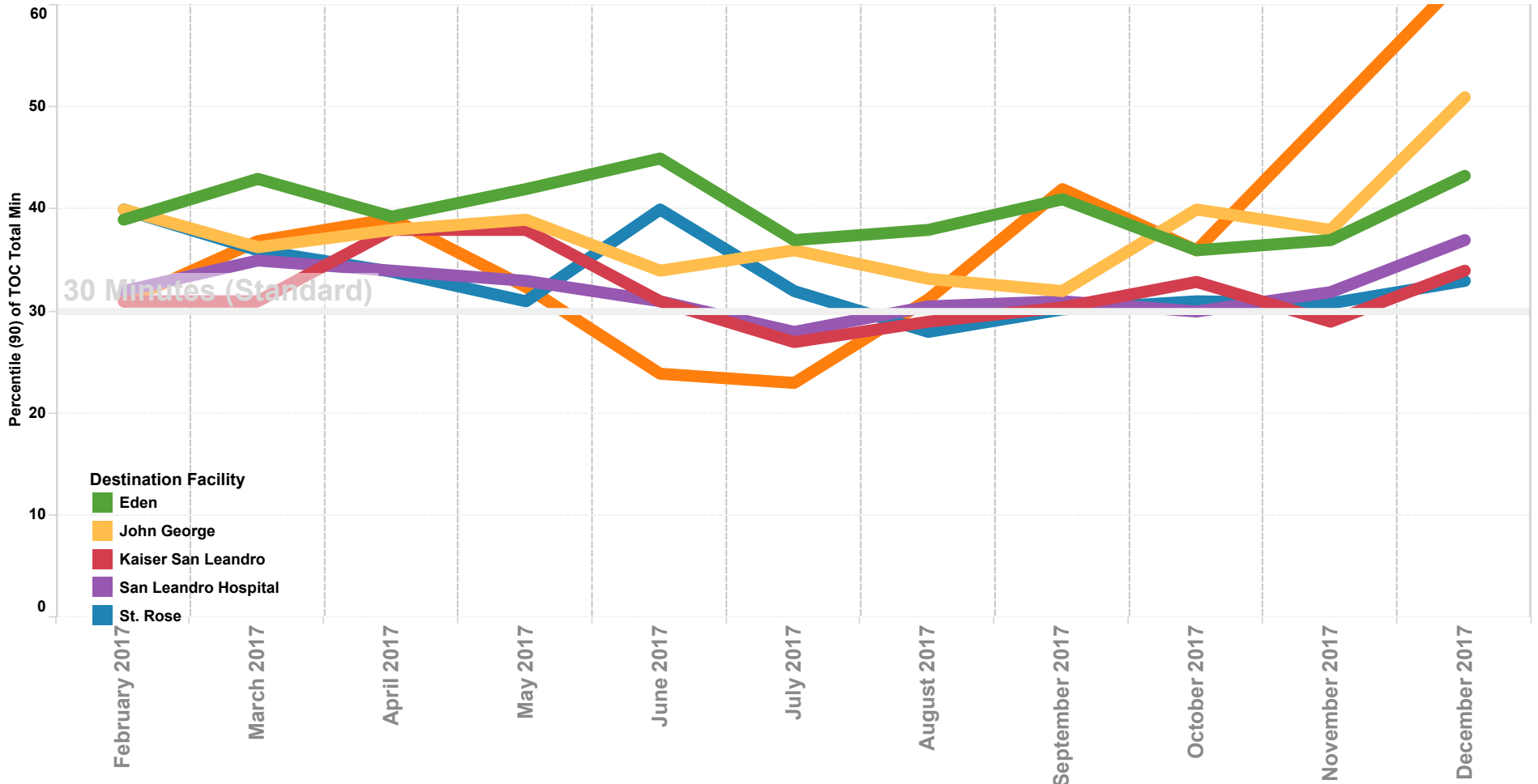
APOT North County

Previous 12 Months | 90th Percentile



APOT Mid County

Previous 12 Months | 90th Percentile



APOT South and East County

Previous 12 Months | 90th Percentile

