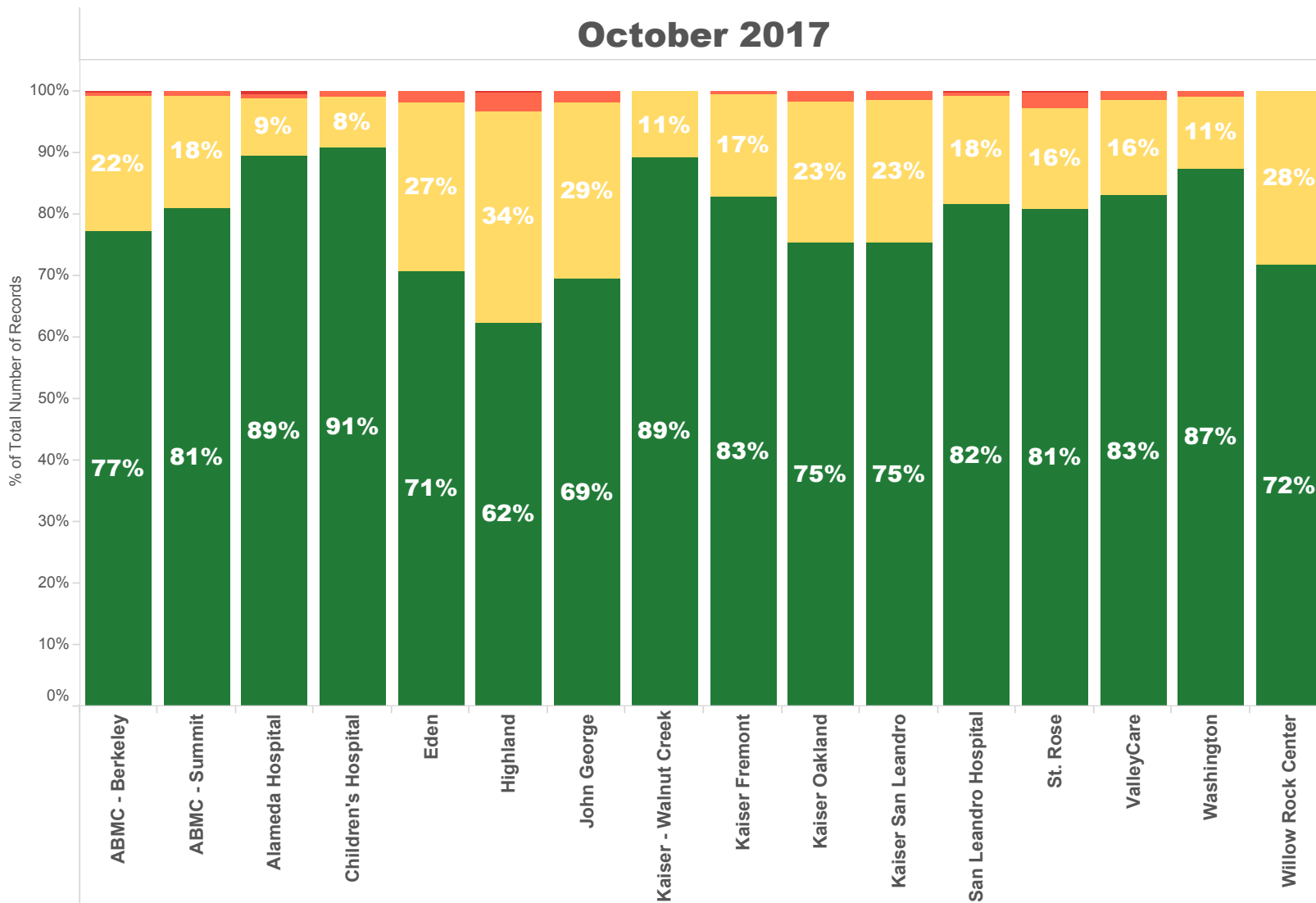


October 2017

NOTE: The 90th percentile is the value for w..

Destination Facility	Rank (Composite)	Avg. TOC	90th Percentile TOC	APOD >60 min	APOD % of N	N = Number of Transports
Kaiser - Walnut Creek	1	12 min.	21.0 min.	0	0%	147
ABMC - Berkeley	4	16 min.	29.0 min.	4	1%	544
John George	12	17 min.	40.0 min.	9	2%	366
Alameda Hospital	4	11 min.	21.0 min.	2	1%	160
Children's Hospital	3	11 min.	20.0 min.	1	1%	108
San Leandro Hospital	6	15 min.	30.0 min.	5	1%	628
Washington	6	13 min.	23.0 min.	10	1%	789
Kaiser Fremont	2	14 min.	27.0 min.	3	1%	418
ABMC - Summit	5	15 min.	28.0 min.	9	1%	1,032
ValleyCare	8	15 min.	31.6 min.	7	1%	495
Kaiser Oakland	10	17 min.	36.0 min.	12	2%	631
Kaiser San Leandro	9	17 min.	32.9 min.	12	2%	652
Eden	11	18 min.	36.0 min.	20	2%	894
Highland	13	21 min.	42.0 min.	42	4%	1,067
St. Rose	10	16 min.	31.0 min.	14	3%	413
Willow Rock Center	7	18 min.	36.0 min.	0	0%	53

October 2017



APOT Occurrence Bins

- 121-180 Min.
- 61-120 Min.
- 21-60 Min.
- <20 Min.

NOTE: APOT Occurrence bins conform to the APOT-2 specification as approved by EMS Commission 12-14-16 (Rev 11-17-2016)

October 2017

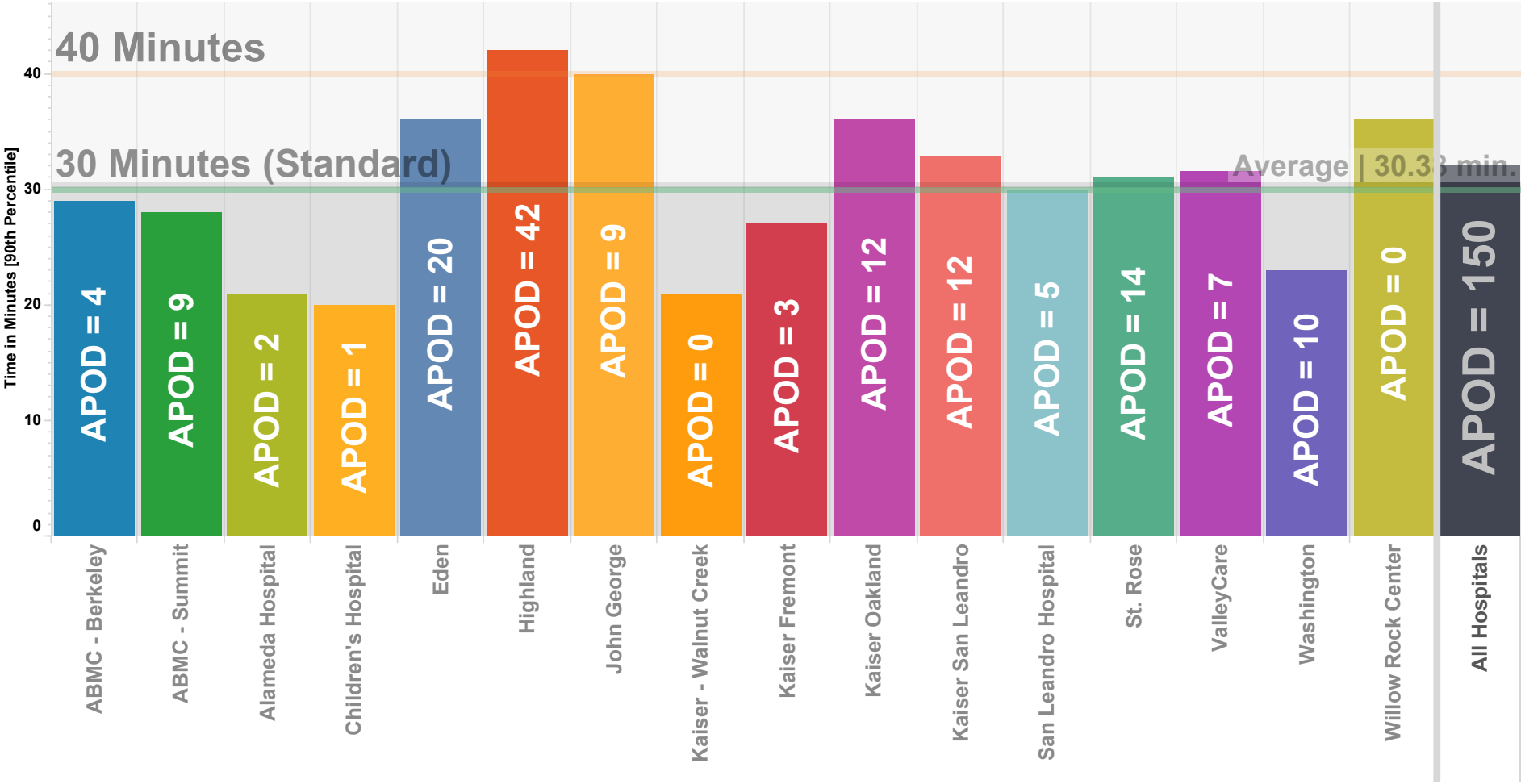
	ABMC - Berkeley	ABMC - Summit	Alameda Hospital	Children's Hospital	Eden	Highland	John George	Kaiser - Walnut Creek	Kaiser Fremont	Kaiser Oakland	Kaiser San Leandro	San Leandro Hospital	St. Rose	ValleyCare	Washington	Willow Rock Center	Total
APOT Occurrence Bins																	
121-180 Min.	0.2% 1		0.6% 1			0.2% 2						0.2% 1	0.2% 1				0.1% 6
61-120 Min.	0.6% 3	0.9% 9	0.6% 1	0.9% 1	2.0% 18	3.3% 35	1.9% 7		0.5% 2	1.7% 11	1.5% 10	0.6% 4	2.7% 11	1.4% 7	1.1% 9		1.5% 128
21-60 Min.	22.2% 121	18.2% 188	9.4% 15	8.3% 9	27.3% 244	34.2% 365	28.7% 105	10.9% 16	16.7% 70	23.0% 145	23.2% 151	17.7% 111	16.2% 67	15.8% 78	11.4% 90	28.3% 15	21.3% 1,790
<20 Min.	77.0% 419	80.9% 835	89.4% 143	90.7% 98	70.7% 632	62.3% 665	69.4% 254	89.1% 131	82.8% 346	75.3% 475	75.3% 491	81.5% 512	80.9% 334	82.8% 410	87.5% 690	71.7% 38	77.1% 6,473

NOTE: APOT Occurrence bins conform to the APOT-2 specification as approved by EMS Commission 12-14-16 (Rev 11-17-2016)

Ambulance Patient Offload Times (APOT) October 2017

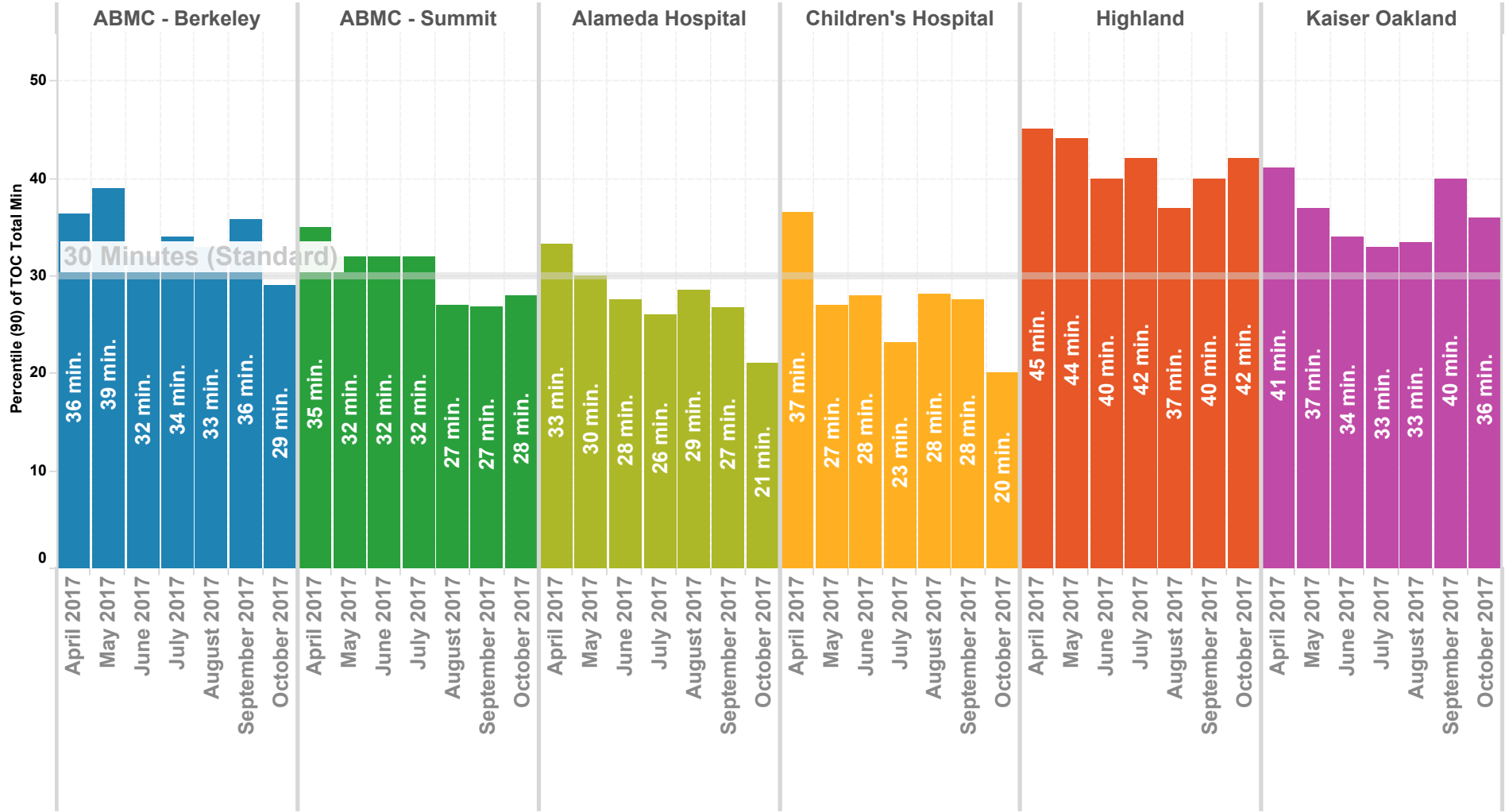
90th Percentile

NOTE: The **90th percentile** is the value for which 90% of the data points are smaller.



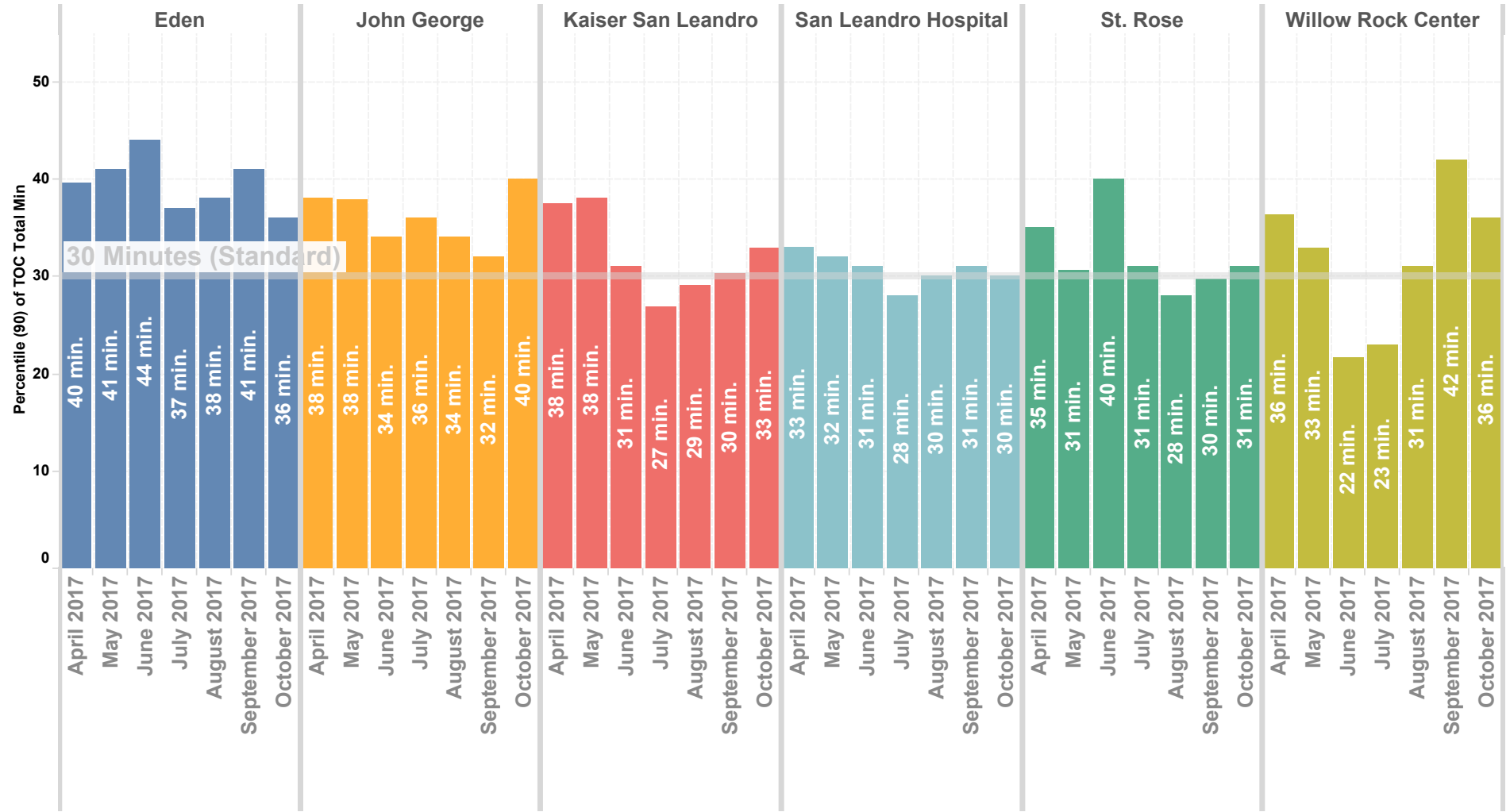
Wall Times (TOC) 2016 By Month - North County

Previous 8 Months | 90th Percentile



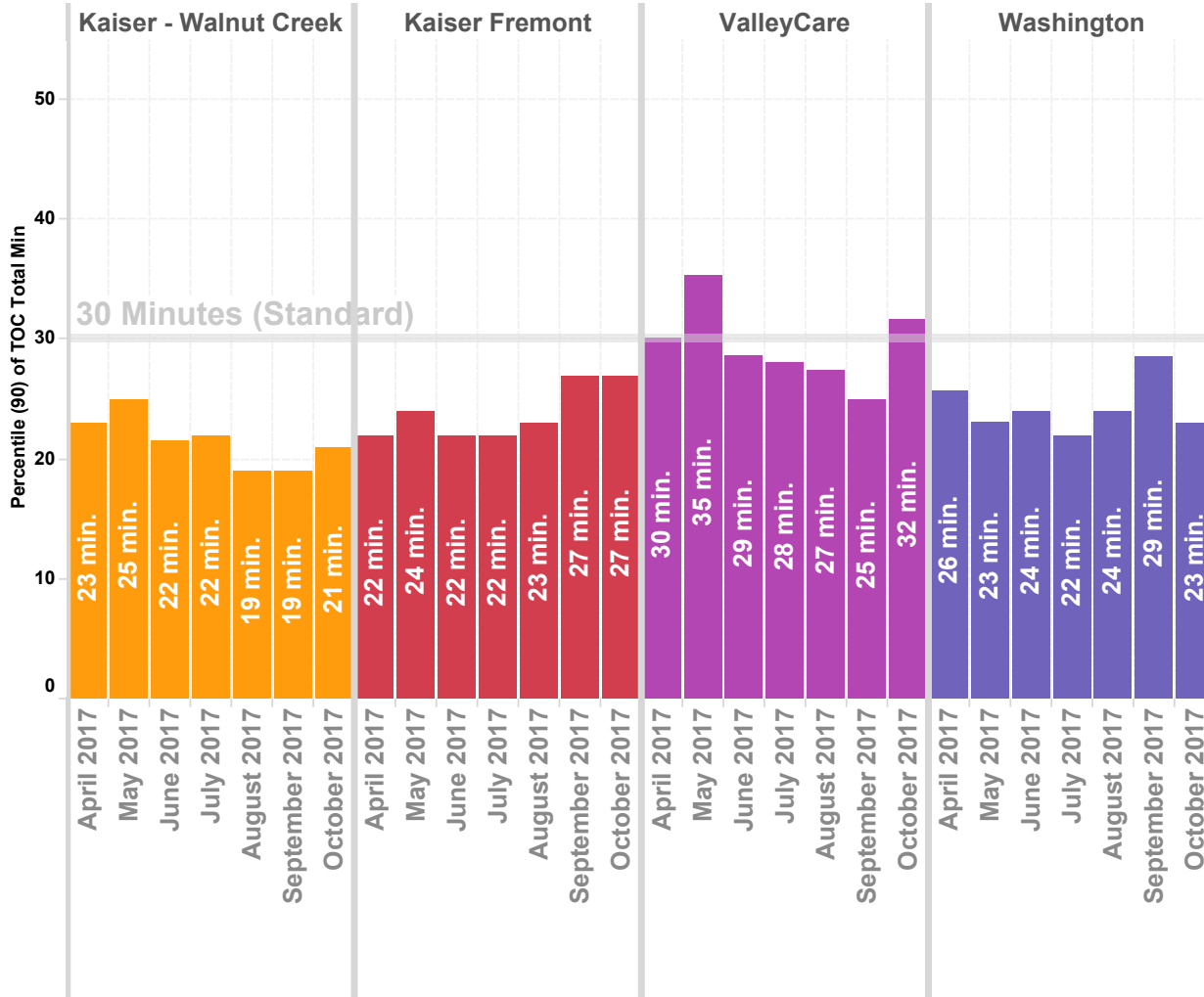
Wall Times (TOC) 2016 By Month - Mid County

Previous 8 Months | 90th Percentile



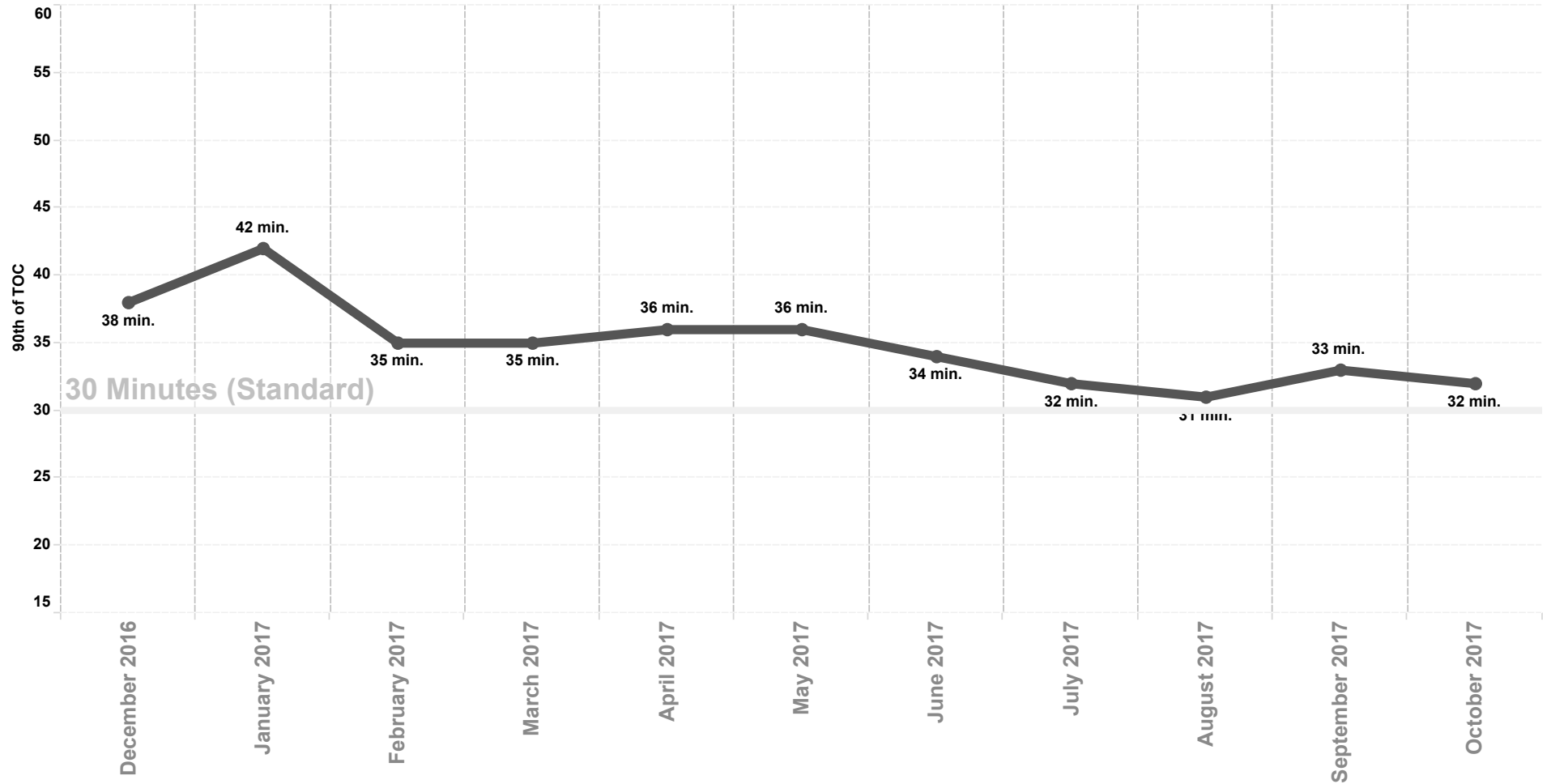
Wall Times (TOC) 2016 By Month - East County & South County

Previous 8 Months | 90th Percentile



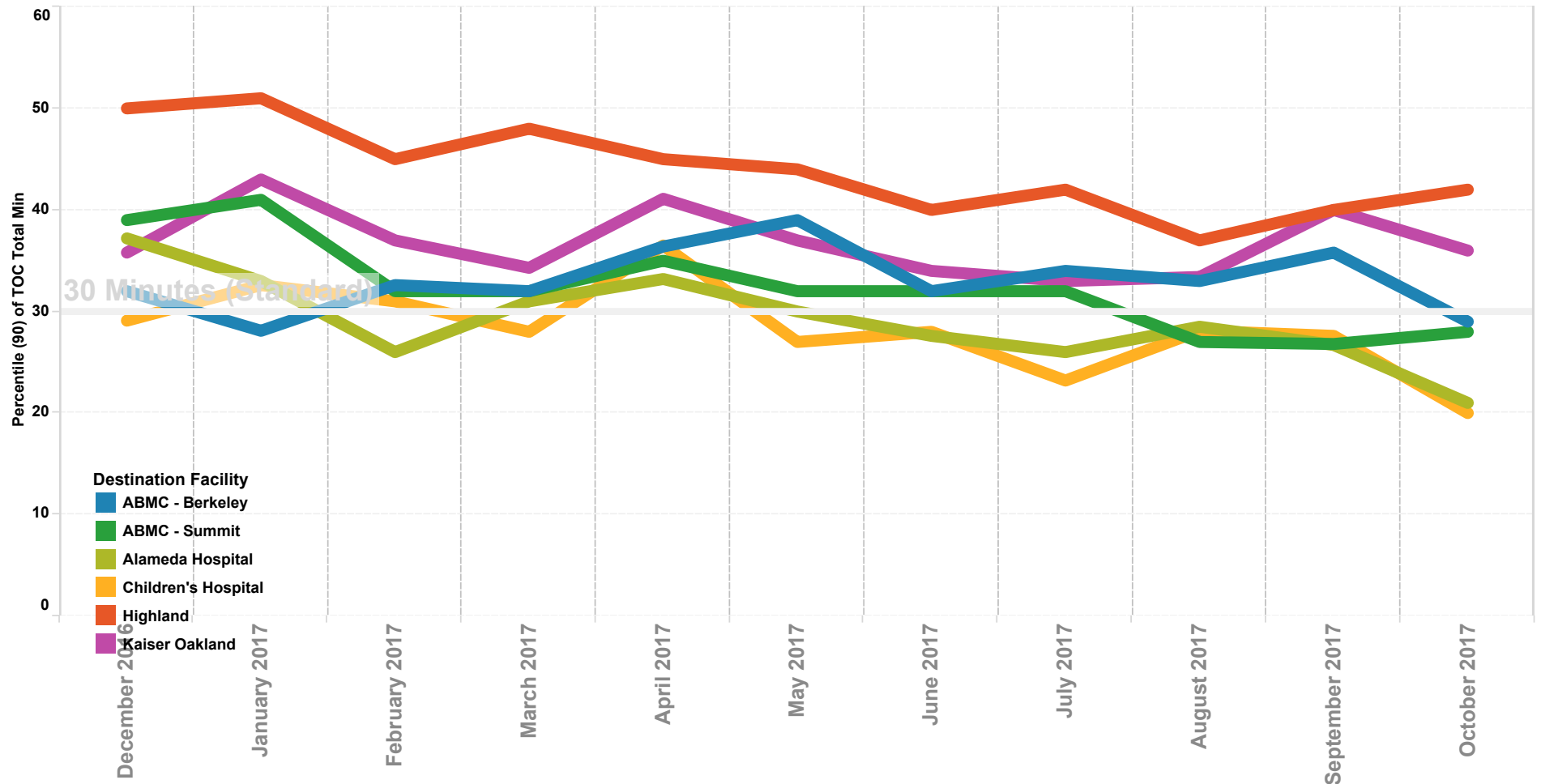
APOT All Hospitals

Previous 12 Months | 90th Percentile



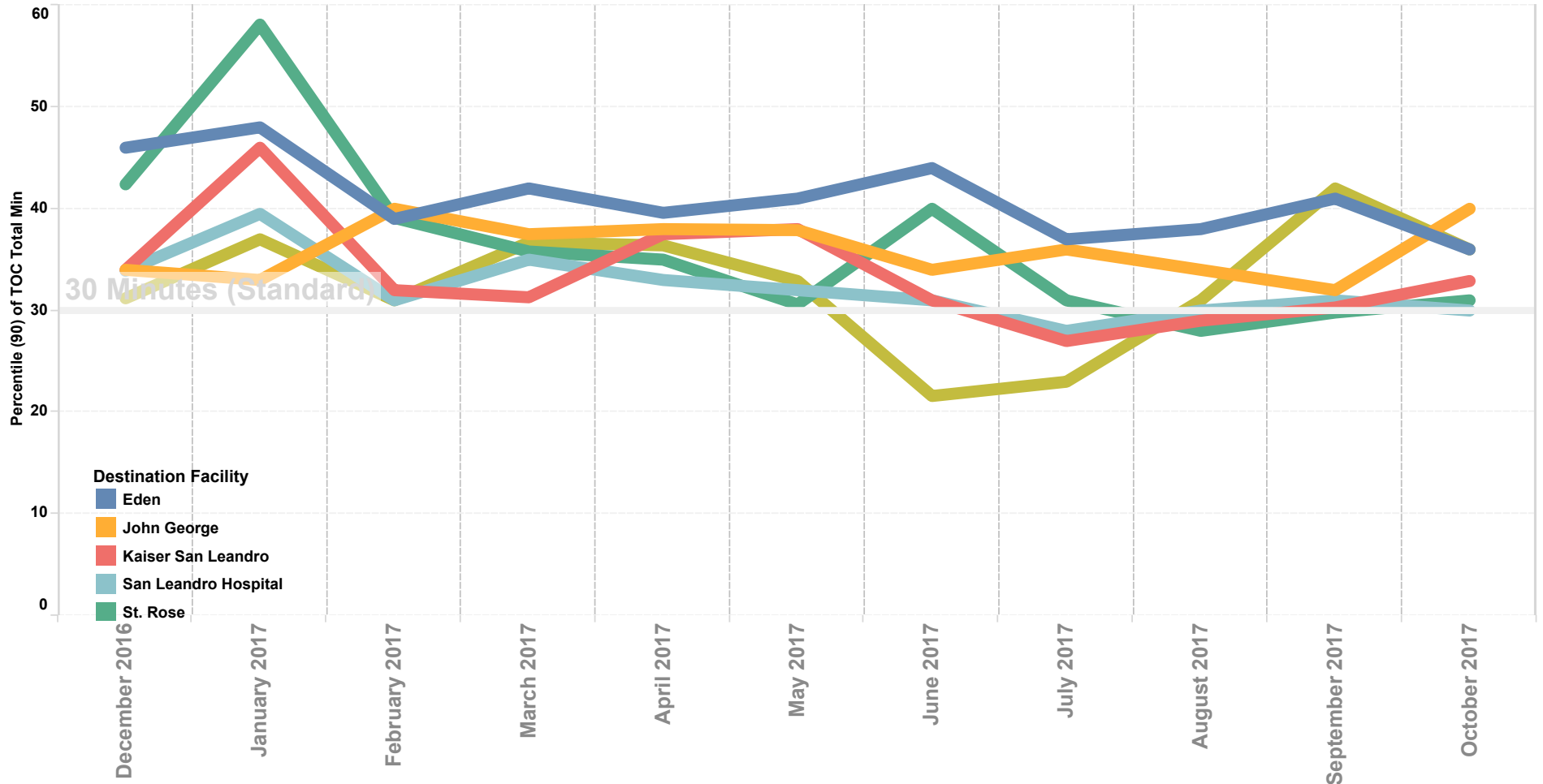
APOT North County

Previous 12 Months | 90th Percentile



APOT Mid County

Previous 12 Months | 90th Percentile



APOT South and East County

Previous 12 Months | 90th Percentile

