

# APOT Report 2022

File created on: 10/5/2022 8:46:49 AM

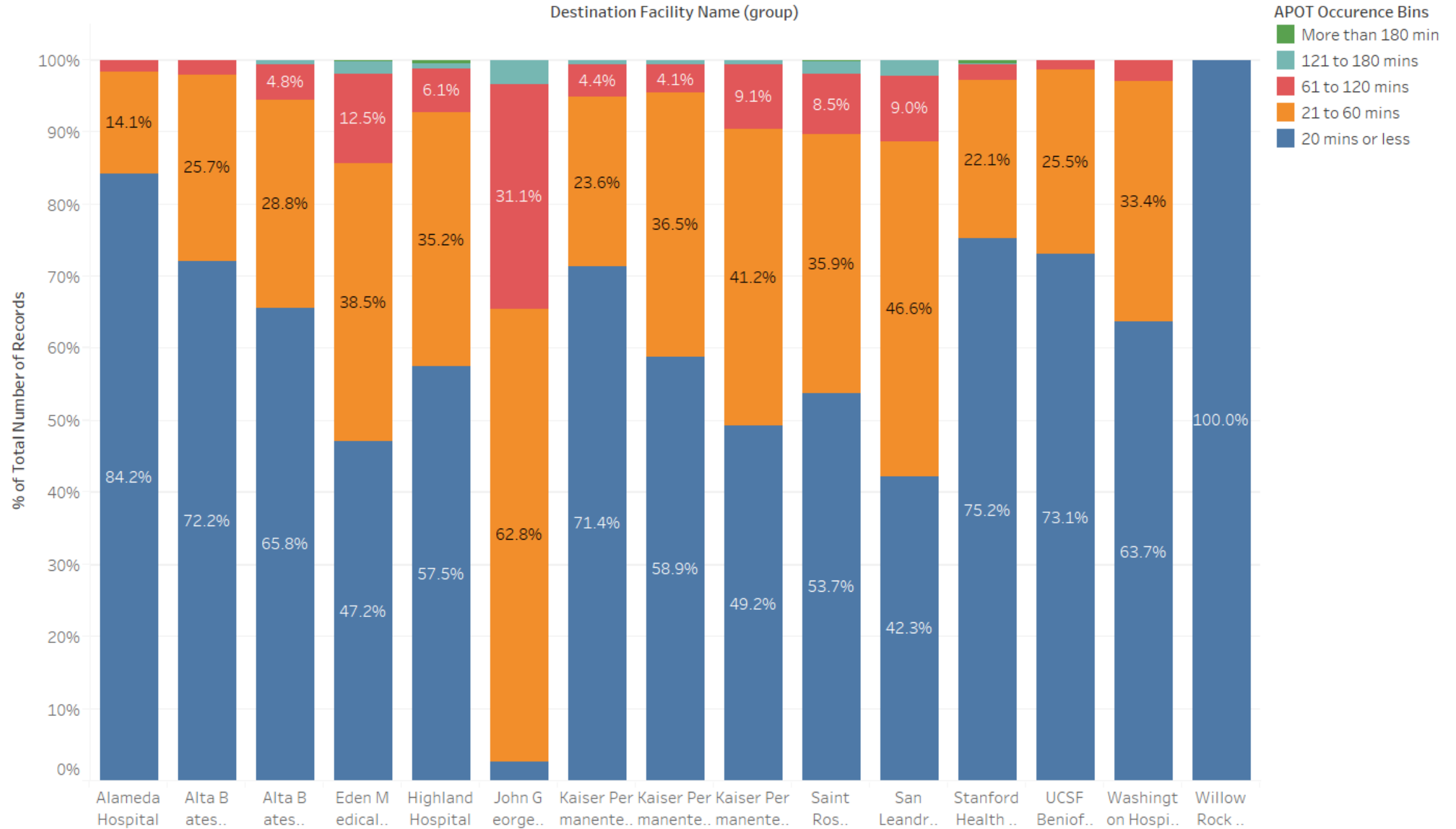
## Summary

Destination Facility Name (group)	Avg. Transfer of Care	Percentile (90) of Transfer of ..	APOD>60m..	APOD % of N	
Alameda Hospital	14.2	28.0	5	1.7%	291
Alta Bates Summit Medic..	18.5	34.0	10	2.1%	479
Alta Bates Summit Medic..	21.5	41.0	65	5.4%	1,203
Eden Medical Center	31.5	73.7	137	14.4%	954
Highland Hospital	24.9	51.0	87	7.3%	1,191
John George Psychiatric P..	54.1	89.0	63	34.4%	183
Kaiser Permanente, Frem..	21.1	40.0	25	5.0%	496
Kaiser Permanente, Oakla..	22.8	45.0	35	4.6%	761
Kaiser Permanente, San L..	28.4	59.0	73	9.6%	762
Saint Rose Hospital	28.4	62.0	49	10.4%	471
San Leandro Hospital	32.4	65.0	57	11.2%	511
Stanford Health Care - Val..	17.8	35.0	16	2.7%	592
UCSF Benioff Children's H..	17.5	34.6	2	1.4%	145
Washington Hospital, Fre..	20.5	37.0	25	2.9%	862
Willow Rock Center	12.0	12.0	0	0.0%	1

## APOT Bins

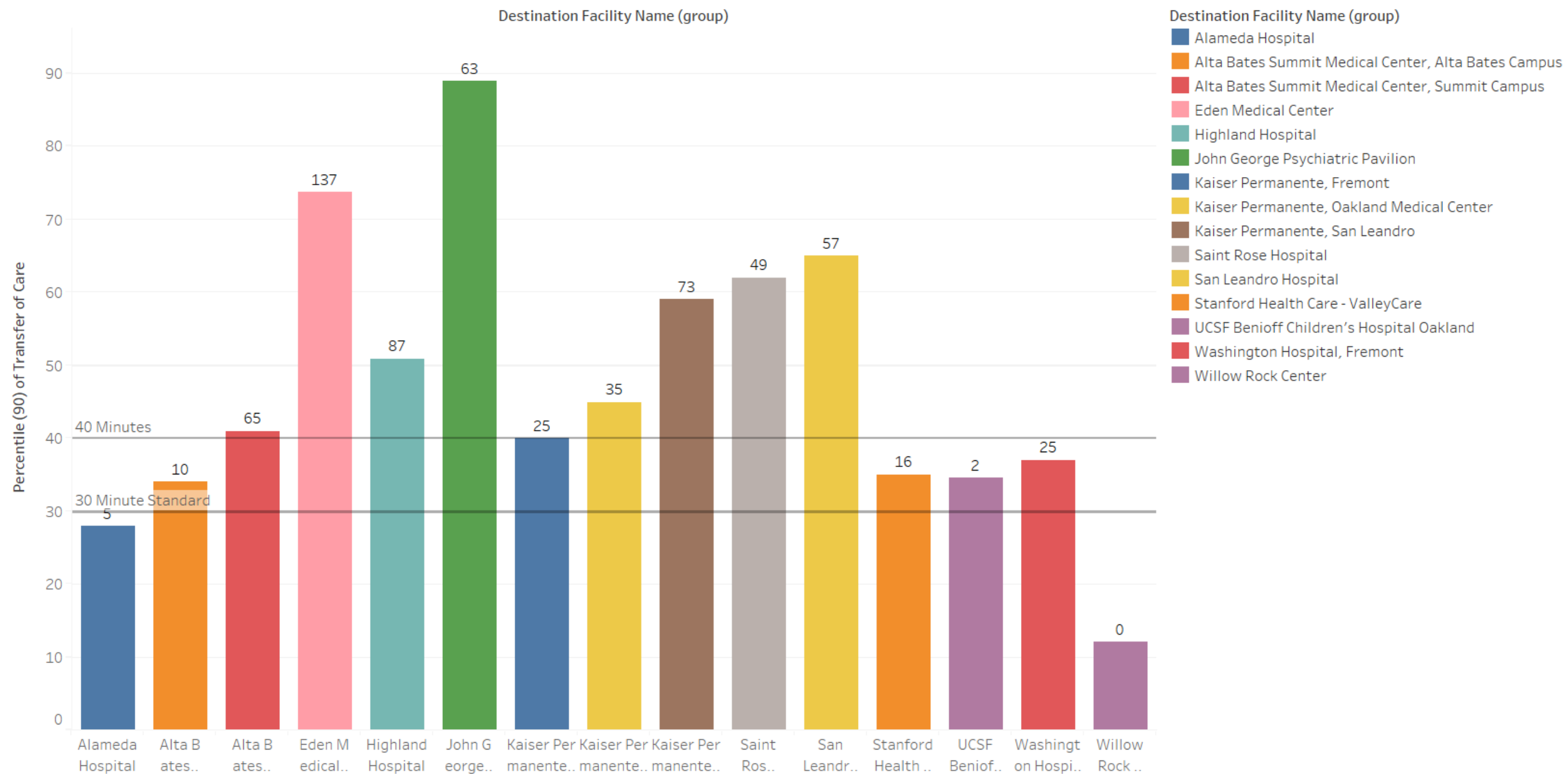
Destination Facility Name (group)	APOT Occurrence Bins					Grand Total
	20 mins or less	21 to 60 mins	61 to 120 mins	121 to 180 mins	More than 18..	
Alameda Hospital	245 84.19%	41 14.09%	5 1.72%			291 100.00%
Alta Bates Summit Medical Center, Alta Bates Campus	346 72.23%	123 25.68%	10 2.09%			479 100.00%
Alta Bates Summit Medical Center, Summit Campus	791 65.75%	347 28.84%	58 4.82%	7 0.58%		1,203 100.00%
Eden Medical Center	450 47.17%	367 38.47%	119 12.47%	16 1.68%	2 0.21%	954 100.00%
Highland Hospital	685 57.51%	419 35.18%	73 6.13%	10 0.84%	4 0.34%	1,191 100.00%
John George Psychiatric Pavilion	5 2.73%	115 62.84%	57 31.15%	6 3.28%		183 100.00%
Kaiser Permanente, Fremont	354 71.37%	117 23.59%	22 4.44%	3 0.60%		496 100.00%
Kaiser Permanente, Oakland Medical Center	448 58.87%	278 36.53%	31 4.07%	4 0.53%		761 100.00%
Kaiser Permanente, San Leandro	375 49.21%	314 41.21%	69 9.06%	4 0.52%		762 100.00%
Saint Rose Hospital	253 53.72%	169 35.88%	40 8.49%	8 1.70%	1 0.21%	471 100.00%
San Leandro Hospital	216 42.27%	238 46.58%	46 9.00%	11 2.15%		511 100.00%
Stanford Health Care - ValleyCare	445 75.17%	131 22.13%	13 2.20%	1 0.17%	2 0.34%	592 100.00%
UCSF Benioff Children's Hospital Oakland	106 73.10%	37 25.52%	2 1.38%			145 100.00%
Washington Hospital, Fremont	549 63.69%	288 33.41%	25 2.90%			862 100.00%
Willow Rock Center	1 100.00%					1 100.00%
<b>Grand Total</b>	<b>5,269 59.19%</b>	<b>2,984 33.52%</b>	<b>570 6.40%</b>	<b>70 0.79%</b>	<b>9 0.10%</b>	<b>8,902 100.00%</b>

# APOT Bins Graph

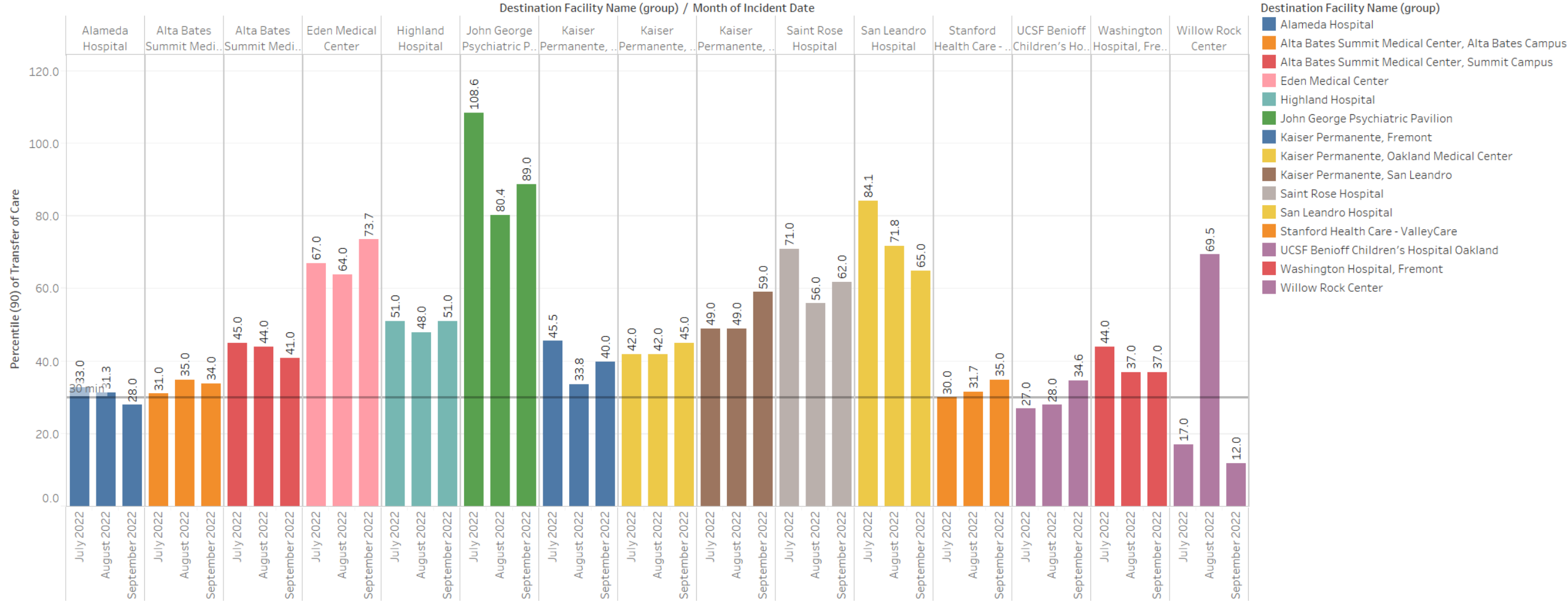


# Current Month 90% APOT

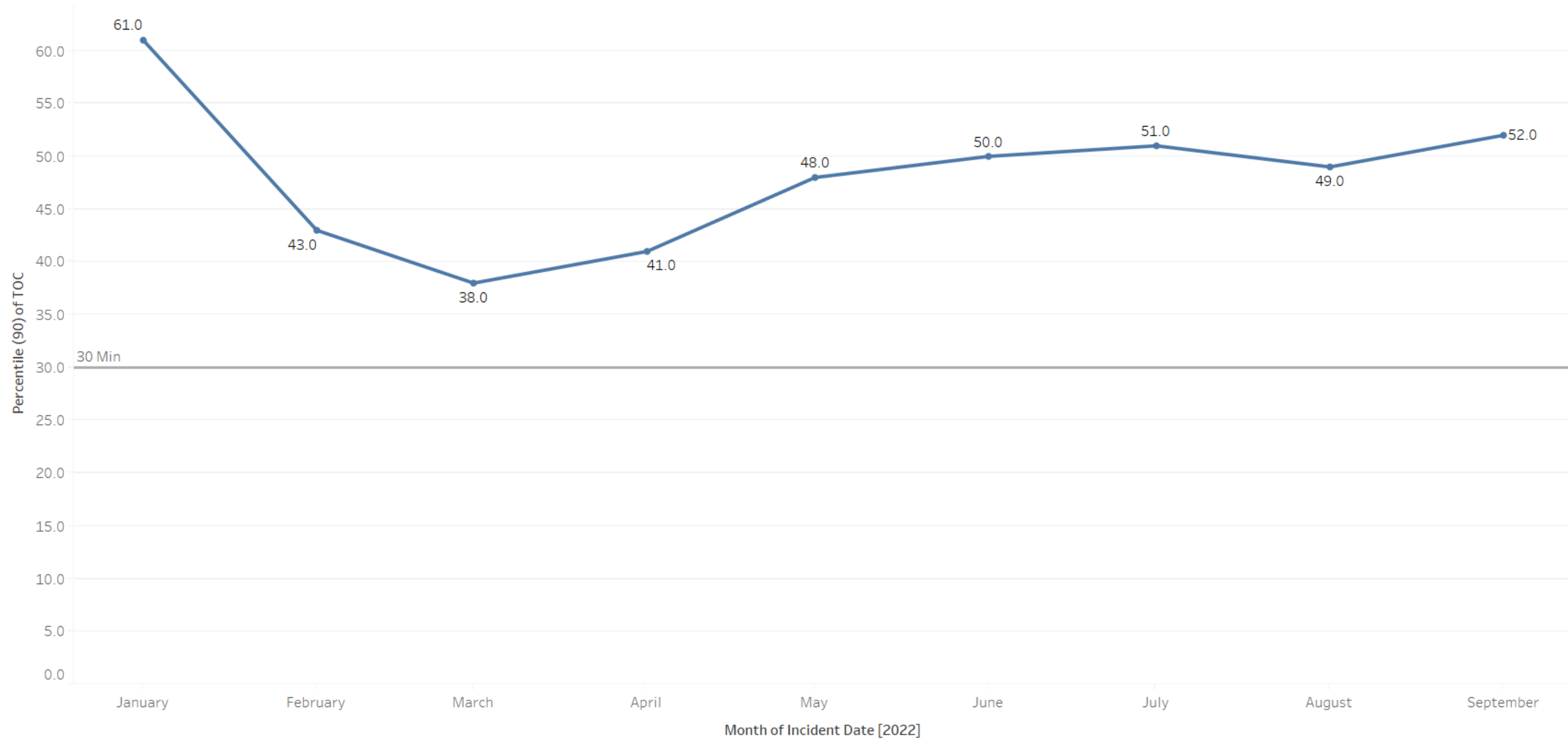
Data label reflects number of APOT >60min



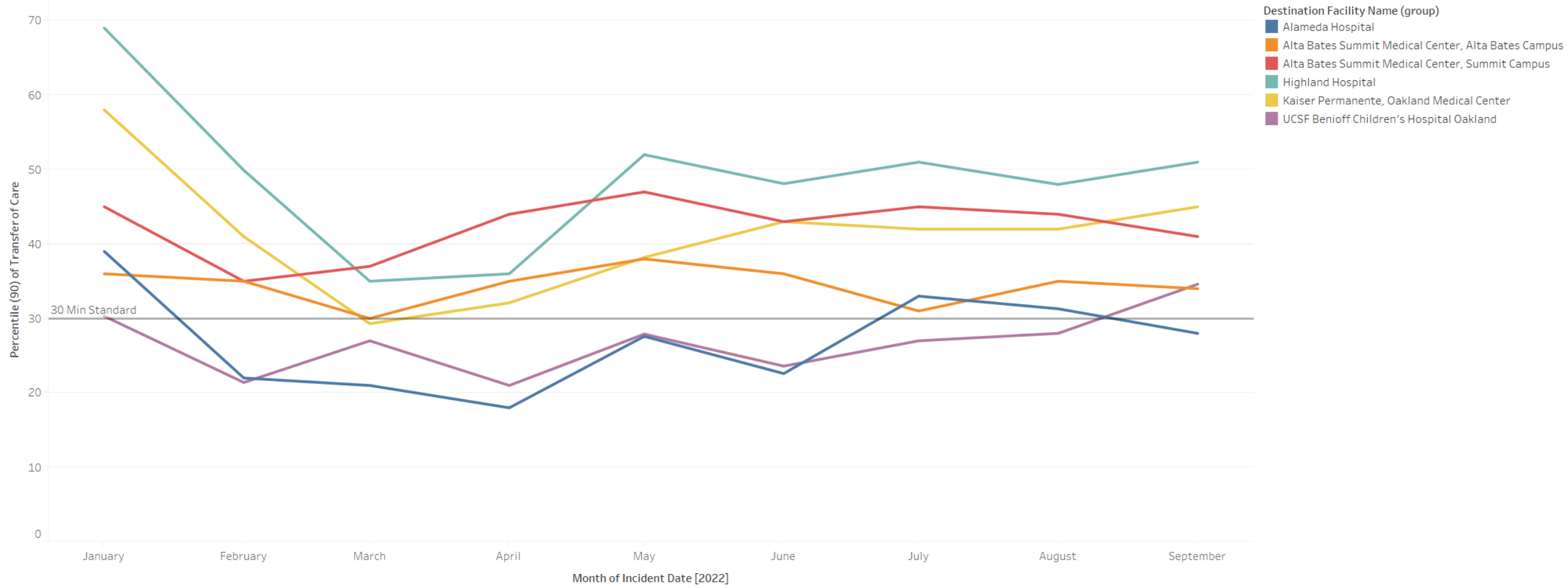
Prev Month 90% APOT



# All Hospital 90% APOT

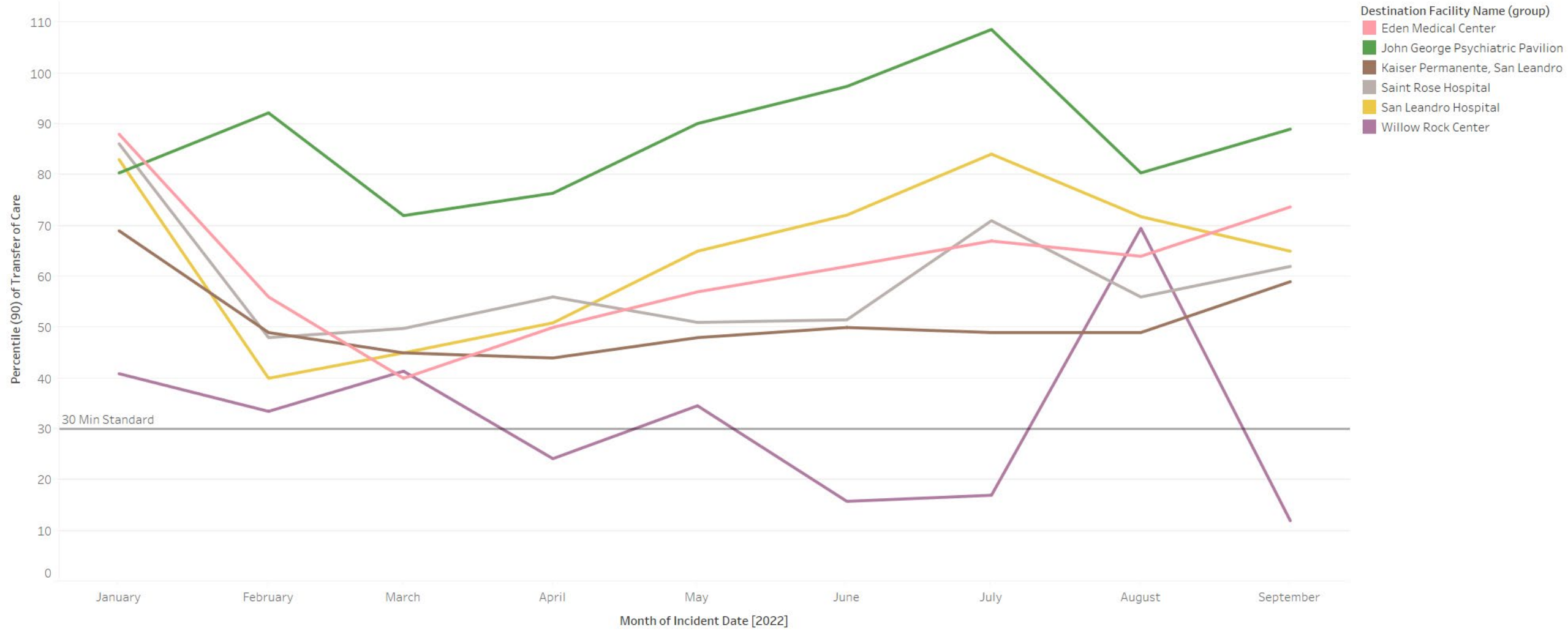


# North 90% APOT

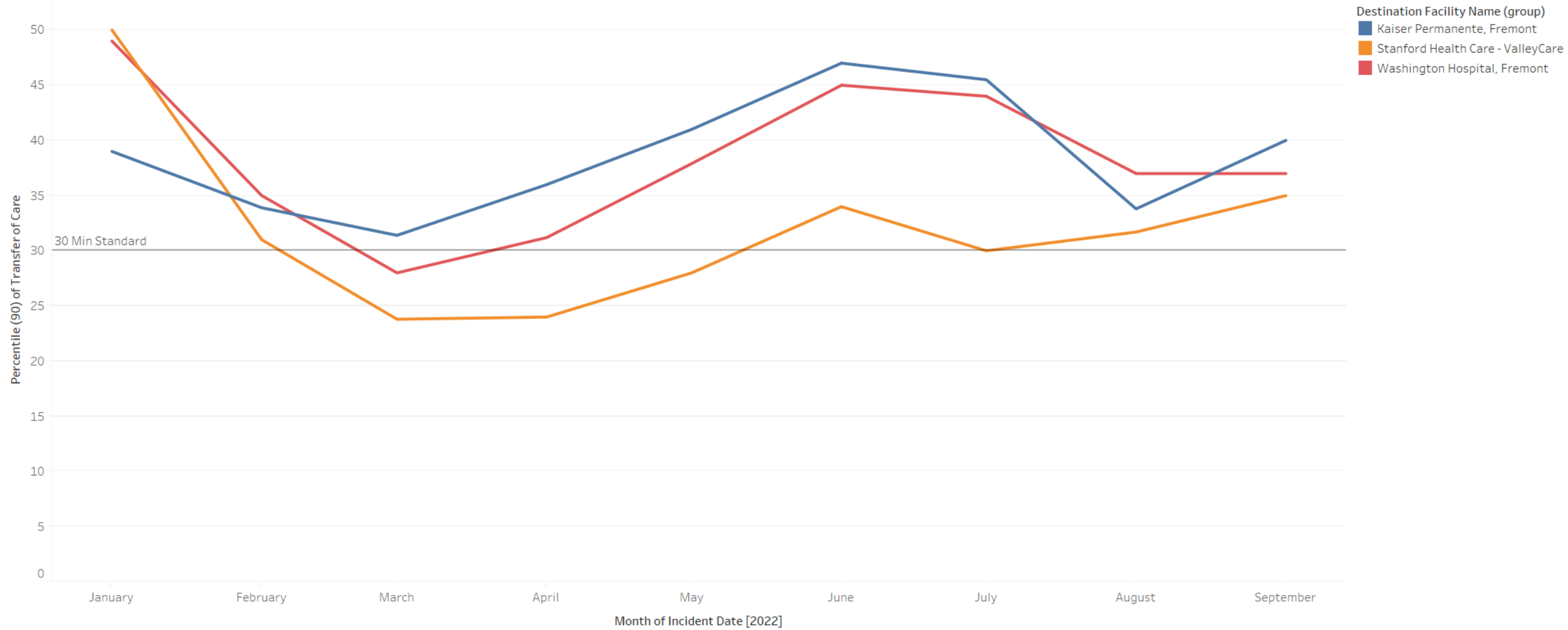




# Mid 90% APOT



# South and East 90% APOT



# APOT Bins Graph by Agency

