

APOT Report May 2022

File created on: 6/1/2022 1:13:29 PM

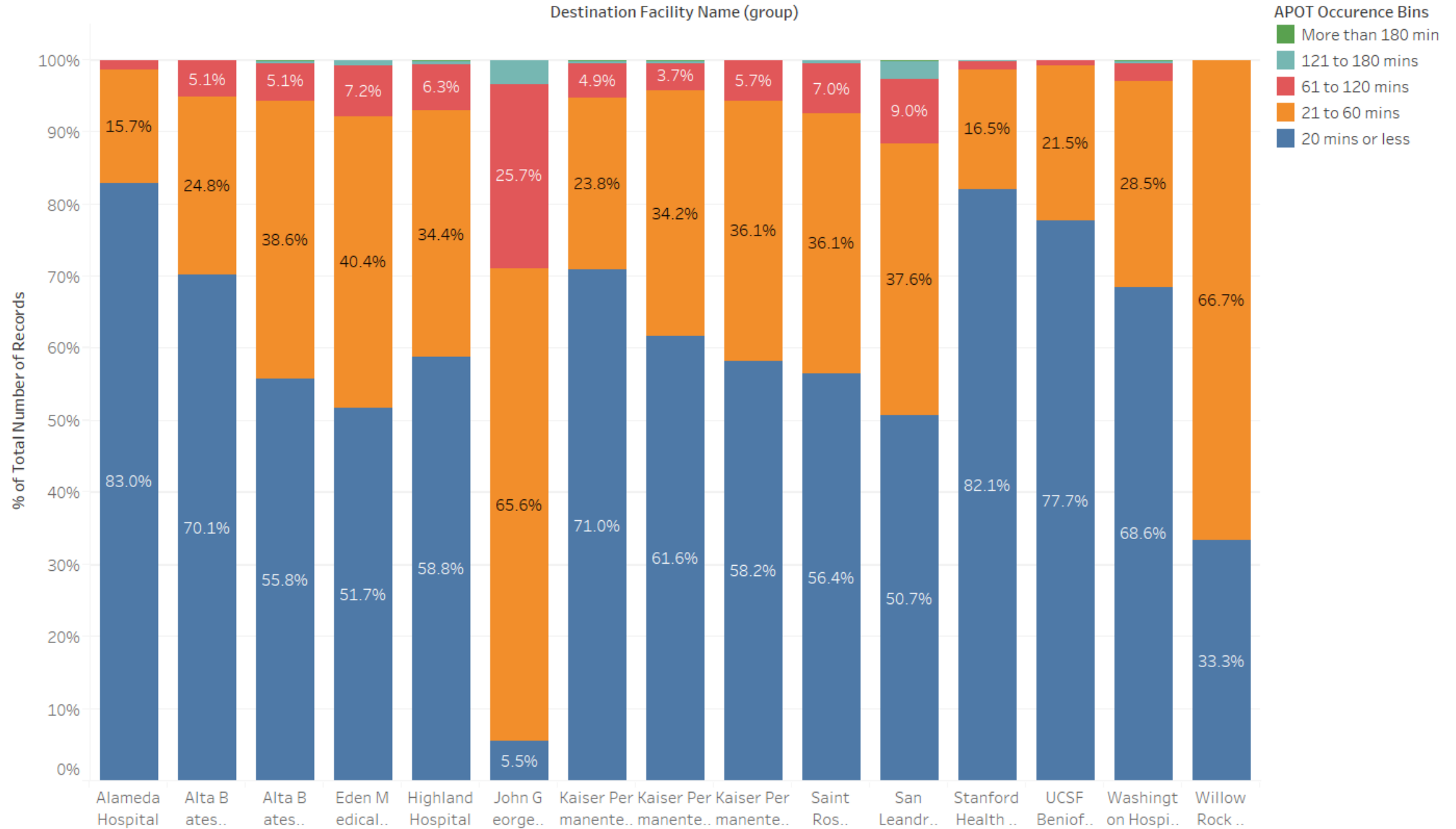
Summary

| Destination Facility Name (group) | Avg. TOCv3 | Percentile (90) | | APOD % of N | |
|--------------------------------------|------------|-----------------|------------|-------------|-------|
| | | of TOCv3 | APOD>60m.. | | |
| Alameda Hospital | 14.4 | 27.0 | 4 | 1.3% | 318 |
| Alta Bates Summit Medic.. | 20.2 | 38.0 | 27 | 5.1% | 525 |
| Alta Bates Summit Medic.. | 24.3 | 47.0 | 72 | 5.6% | 1,290 |
| Eden Medical Center | 26.1 | 57.0 | 76 | 7.9% | 963 |
| Highland Hospital | 24.2 | 52.0 | 80 | 6.8% | 1,172 |
| John George Psychiatric P.. | 53.6 | 91.6 | 63 | 28.9% | 218 |
| Kaiser Permanente, Frem.. | 20.7 | 41.0 | 27 | 5.3% | 513 |
| Kaiser Permanente, Oakla.. | 21.6 | 38.0 | 35 | 4.2% | 842 |
| Kaiser Permanente, San L.. | 23.9 | 48.0 | 41 | 5.7% | 725 |
| Saint Rose Hospital | 25.4 | 51.2 | 32 | 7.5% | 429 |
| San Leandro Hospital | 30.5 | 65.0 | 63 | 11.6% | 542 |
| Stanford Health Care - Val.. | 14.9 | 27.0 | 9 | 1.4% | 661 |
| UCSF Benioff Children's H.. | 15.2 | 27.1 | 1 | 0.8% | 130 |
| Washington Hospital, Fre.. | 20.4 | 38.0 | 26 | 2.9% | 888 |
| Willow Rock Center | 26.3 | 34.6 | 0 | 0.0% | 3 |

APOT Bins

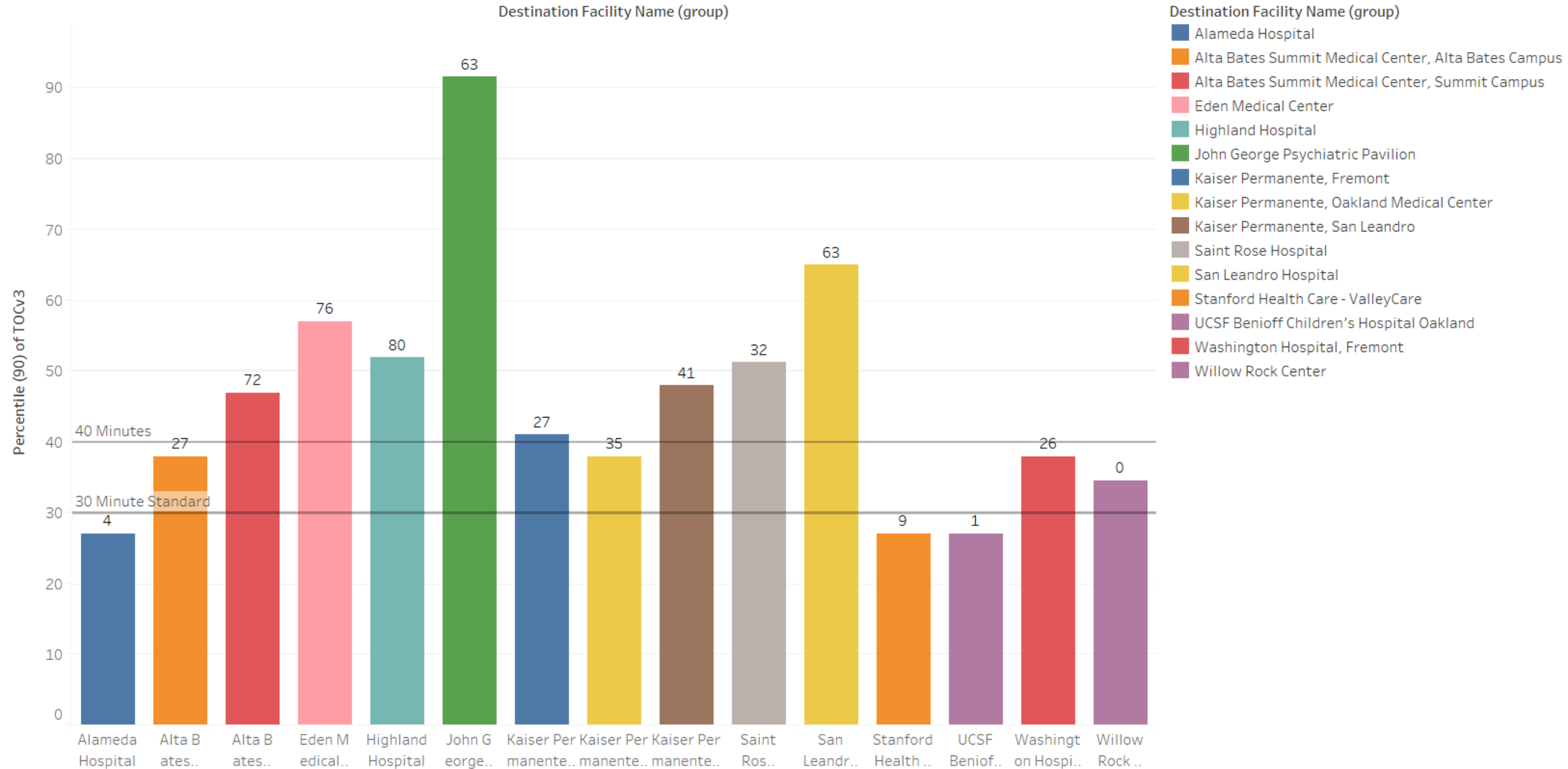
| Destination Facility Name (group) | APOT Occurrence Bins | | | | | Grand Total |
|--|-------------------------|-------------------------|----------------------|---------------------|--------------------|--------------------------|
| | 20 mins or less | 21 to 60 mins | 61 to 120 mins | 121 to 180 mins | More than 18.. | |
| Alameda Hospital | 264 83.02% | 50 15.72% | 4 1.26% | | | 318 100.00% |
| Alta Bates Summit Medical Center, Alta Bates Campus | 368 70.10% | 130 24.76% | 27 5.14% | | | 525 100.00% |
| Alta Bates Summit Medical Center, Summit Campus | 720 55.81% | 498 38.60% | 66 5.12% | 5 0.39% | 1 0.08% | 1,290 100.00% |
| Eden Medical Center | 498 51.71% | 389 40.39% | 69 7.17% | 7 0.73% | | 963 100.00% |
| Highland Hospital | 689 58.79% | 403 34.39% | 74 6.31% | 4 0.34% | 2 0.17% | 1,172 100.00% |
| John George Psychiatric Pavilion | 12 5.50% | 143 65.60% | 56 25.69% | 7 3.21% | | 218 100.00% |
| Kaiser Permanente, Fremont | 364 70.96% | 122 23.78% | 25 4.87% | 1 0.19% | 1 0.19% | 513 100.00% |
| Kaiser Permanente, Oakland Medical Center | 519 61.64% | 288 34.20% | 31 3.68% | 3 0.36% | 1 0.12% | 842 100.00% |
| Kaiser Permanente, San Leandro | 422 58.21% | 262 36.14% | 41 5.66% | | | 725 100.00% |
| Saint Rose Hospital | 242 56.41% | 155 36.13% | 30 6.99% | 2 0.47% | | 429 100.00% |
| San Leandro Hospital | 275 50.74% | 204 37.64% | 49 9.04% | 13 2.40% | 1 0.18% | 542 100.00% |
| Stanford Health Care - ValleyCare | 543 82.15% | 109 16.49% | 7 1.06% | 2 0.30% | | 661 100.00% |
| UCSF Benioff Children's Hospital Oakland | 101 77.69% | 28 21.54% | 1 0.77% | | | 130 100.00% |
| Washington Hospital, Fremont | 609 68.58% | 253 28.49% | 23 2.59% | 2 0.23% | 1 0.11% | 888 100.00% |
| Willow Rock Center | 1 33.33% | 2 66.67% | | | | 3 100.00% |
| Grand Total | 5,627 61.04% | 3,036 32.93% | 503 5.46% | 46 0.50% | 7 0.08% | 9,219 100.00% |

APOT Bins Graph

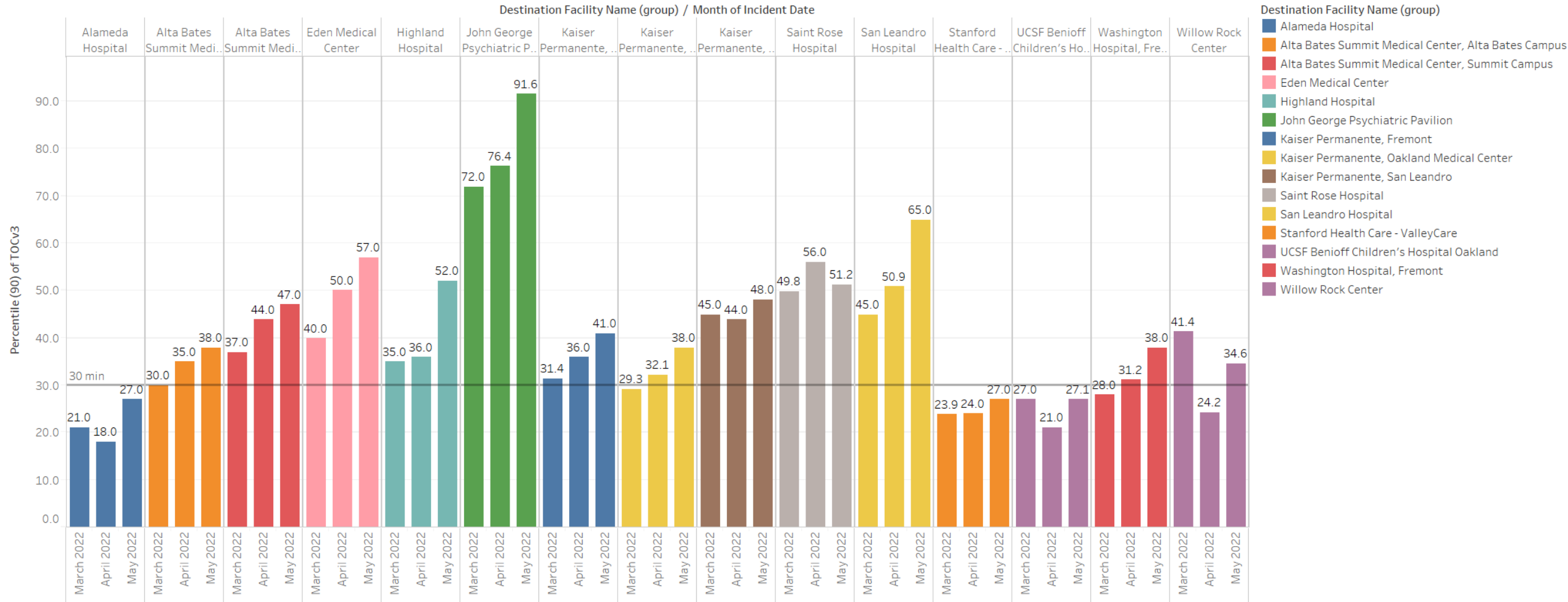


Current Month 90% APOT

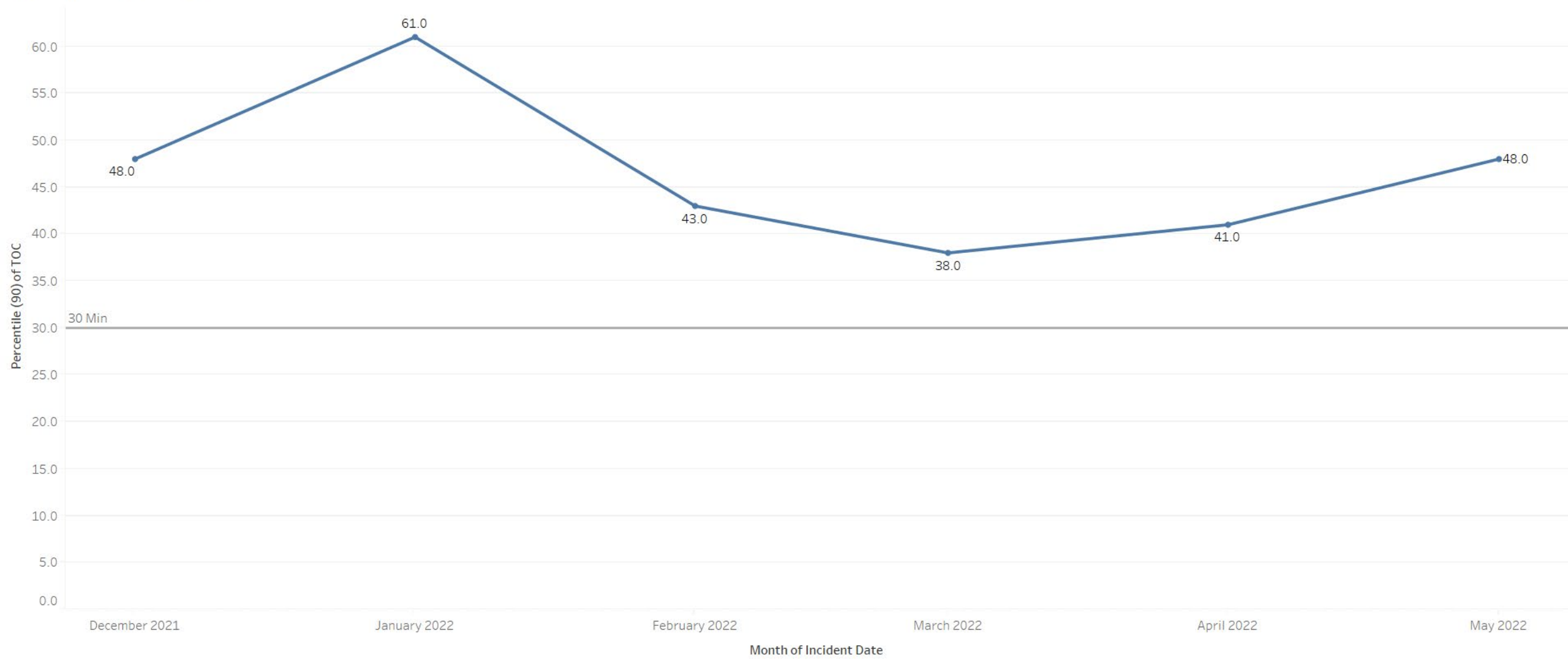
Data label reflects number of APOD >60min



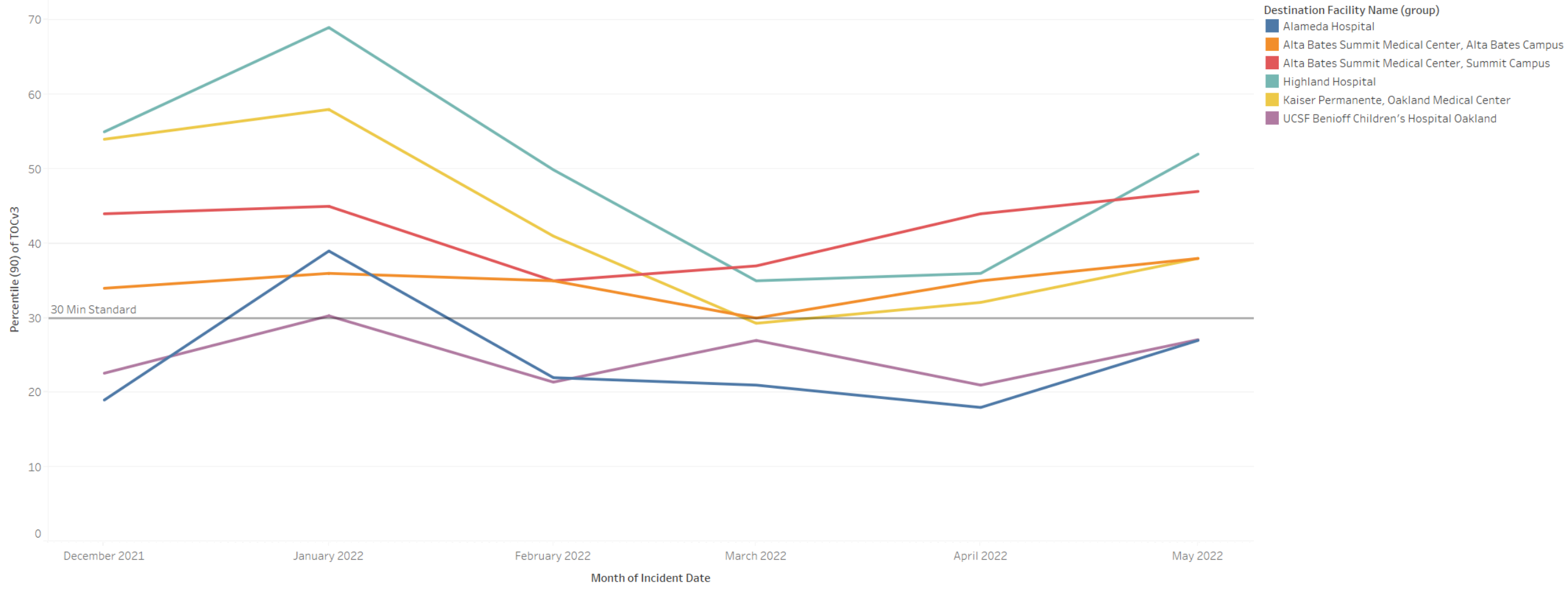
Prev Month 90% APOT



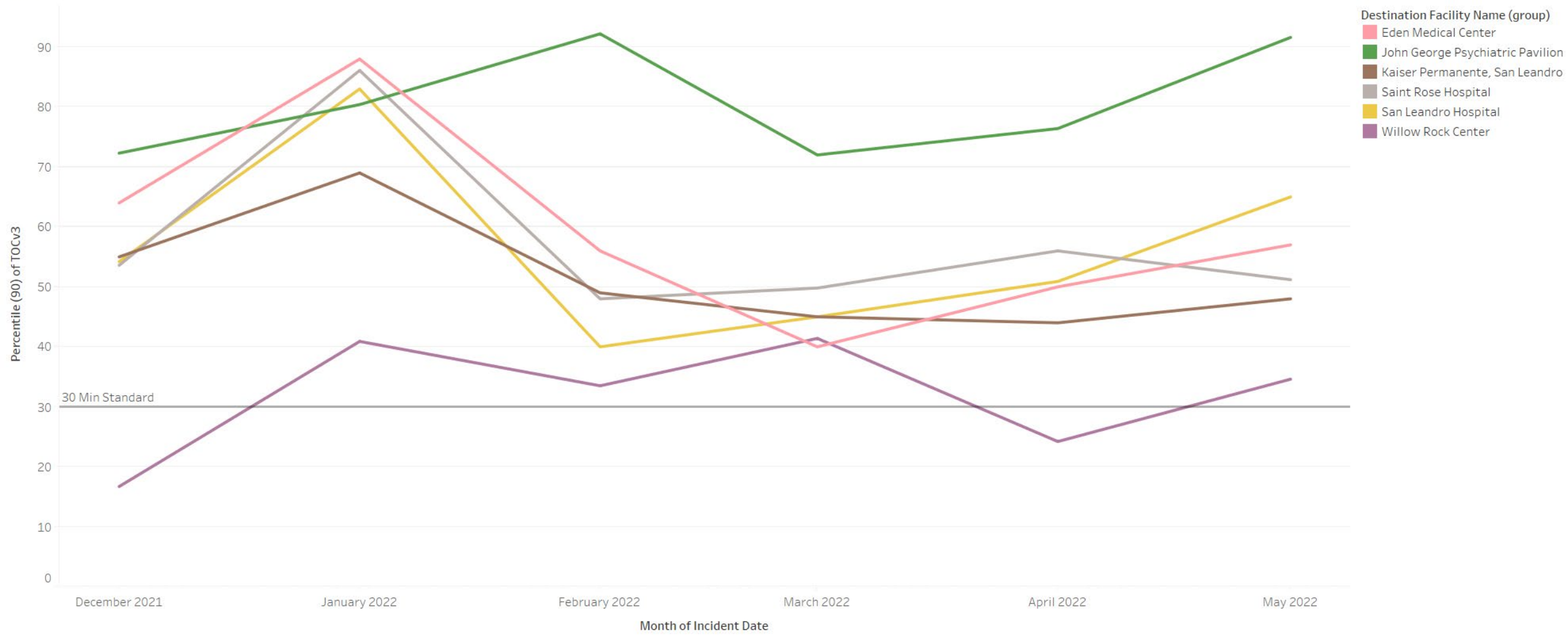
All Hospital 90% APOT



North 90% APOT



Mid 90% APOT



South and East 90% APOT

