

## Summary

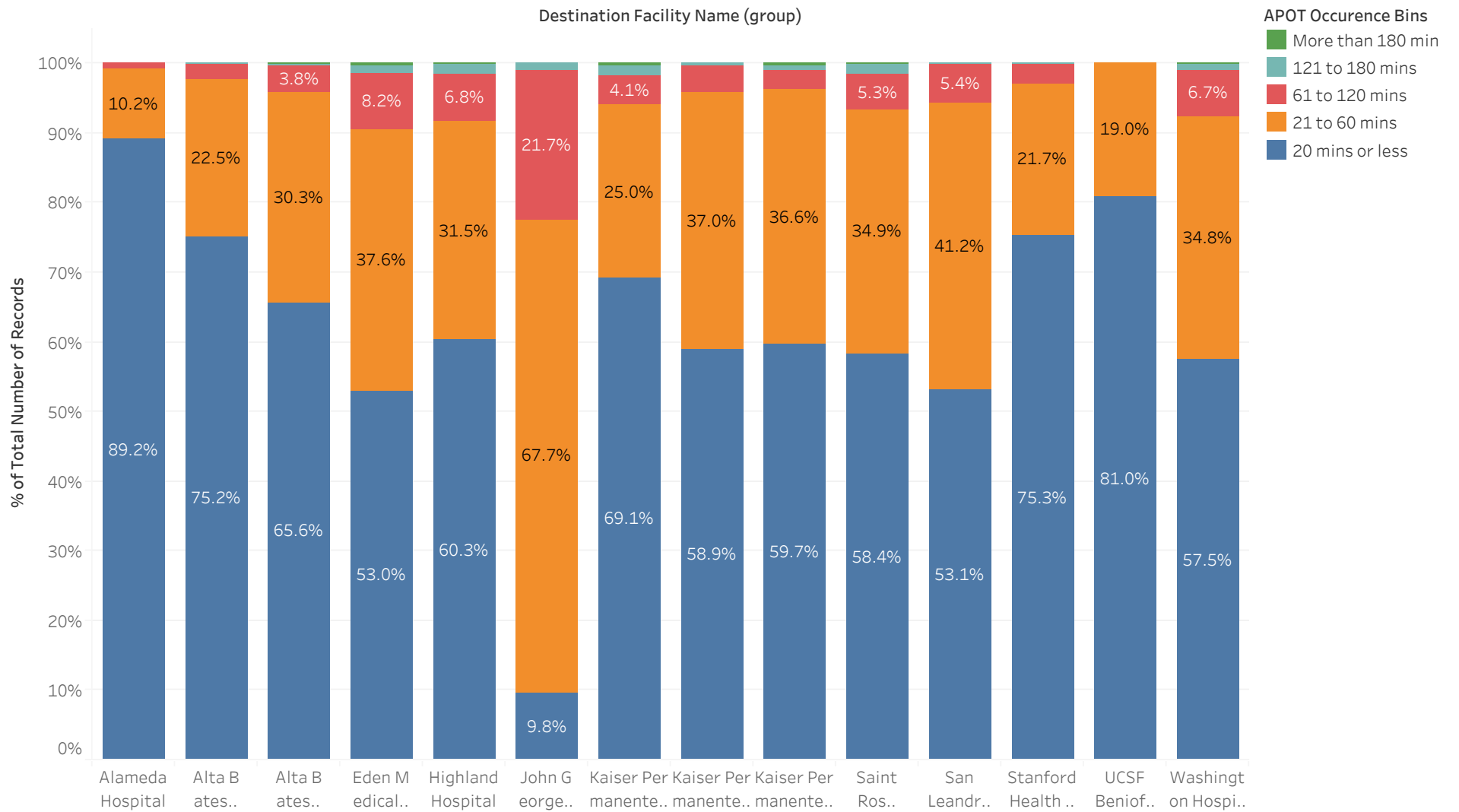
Destination Facility Name (group)	Avg. Transfer of Care	Percentile (90) of Transfer of ..	APOD>60m..	APOD % of N	
Alameda Hospital	11.9	21.6	2	0.7%	295
Alta Bates Summit Medic..	17.3	29.0	11	2.3%	480
Alta Bates Summit Medic..	21.3	42.0	55	4.1%	1,342
Eden Medical Center	27.2	59.0	89	9.4%	942
Highland Hospital	24.8	53.0	97	8.2%	1,185
John George Psychiatric P..	44.9	79.2	53	22.6%	235
Kaiser Permanente, Frem..	23.0	45.6	30	5.8%	515
Kaiser Permanente, Oakla..	22.5	44.0	30	4.1%	738
Kaiser Permanente, San L..	23.4	43.0	28	3.7%	757
Saint Rose Hospital	25.7	49.0	32	6.8%	473
San Leandro Hospital	24.9	46.0	27	5.6%	478
Stanford Health Care - Val..	18.3	35.0	21	2.9%	722
UCSF Benioff Children's H..	14.5	29.0	0	0.0%	126
Washington Hospital, Fre..	25.3	49.8	77	7.7%	1,003

# APOT Bins

## APOT Occurrence Bins

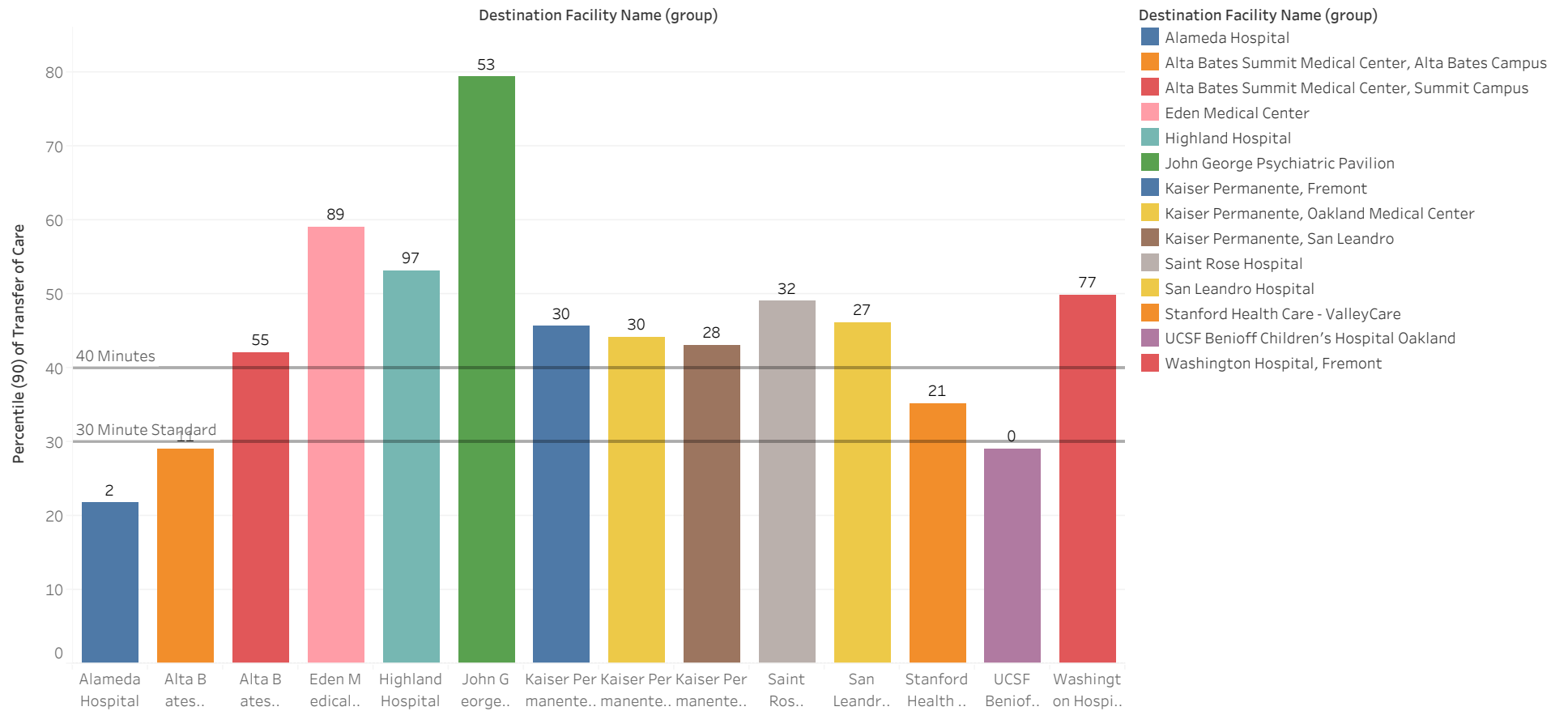
Destination Facility Name (group)	20 mins or less	21 to 60 mins	61 to 120 mins	121 to 180 mins	More than 18..	Grand Total
Alameda Hospital	263 89.15%	30 10.17%	2 0.68%			295 100.00%
Alta Bates Summit Medical Center, Alta Bates Campus	361 75.21%	108 22.50%	10 2.08%	1 0.21%		480 100.00%
Alta Bates Summit Medical Center, Summit Campus	880 65.57%	407 30.33%	51 3.80%	3 0.22%	1 0.07%	1,342 100.00%
Eden Medical Center	499 52.97%	354 37.58%	77 8.17%	9 0.96%	3 0.32%	942 100.00%
Highland Hospital	715 60.34%	373 31.48%	80 6.75%	15 1.27%	2 0.17%	1,185 100.00%
John George Psychiatric Pavilion	23 9.79%	159 67.66%	51 21.70%	2 0.85%		235 100.00%
Kaiser Permanente, Fremont	356 69.13%	129 25.05%	21 4.08%	7 1.36%	2 0.39%	515 100.00%
Kaiser Permanente, Oakland Medical Center	435 58.94%	273 36.99%	27 3.66%	3 0.41%		738 100.00%
Kaiser Permanente, San Leandro	452 59.71%	277 36.59%	21 2.77%	5 0.66%	2 0.26%	757 100.00%
Saint Rose Hospital	276 58.35%	165 34.88%	25 5.29%	6 1.27%	1 0.21%	473 100.00%
San Leandro Hospital	254 53.14%	197 41.21%	26 5.44%	1 0.21%		478 100.00%
Stanford Health Care - ValleyCare	544 75.35%	157 21.75%	20 2.77%	1 0.14%		722 100.00%
UCSF Benioff Children's Hospital Oakland	102 80.95%	24 19.05%				126 100.00%
Washington Hospital, Fremont	577 57.53%	349 34.80%	67 6.68%	9 0.90%	1 0.10%	1,003 100.00%
<b>Grand Total</b>	<b>5,737 61.75%</b>	<b>3,002 32.31%</b>	<b>478 5.14%</b>	<b>62 0.67%</b>	<b>12 0.13%</b>	<b>9,291 100.00%</b>

# APOT Bins Graph

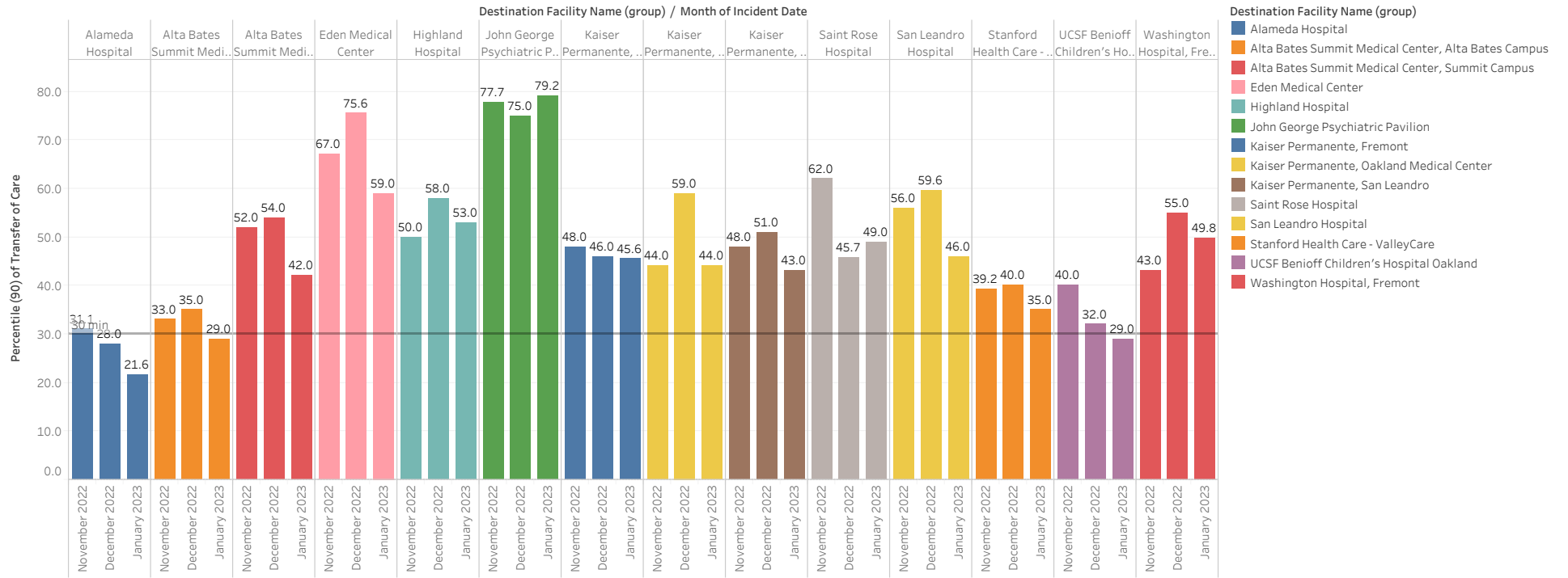


# Current Month 90% APOT

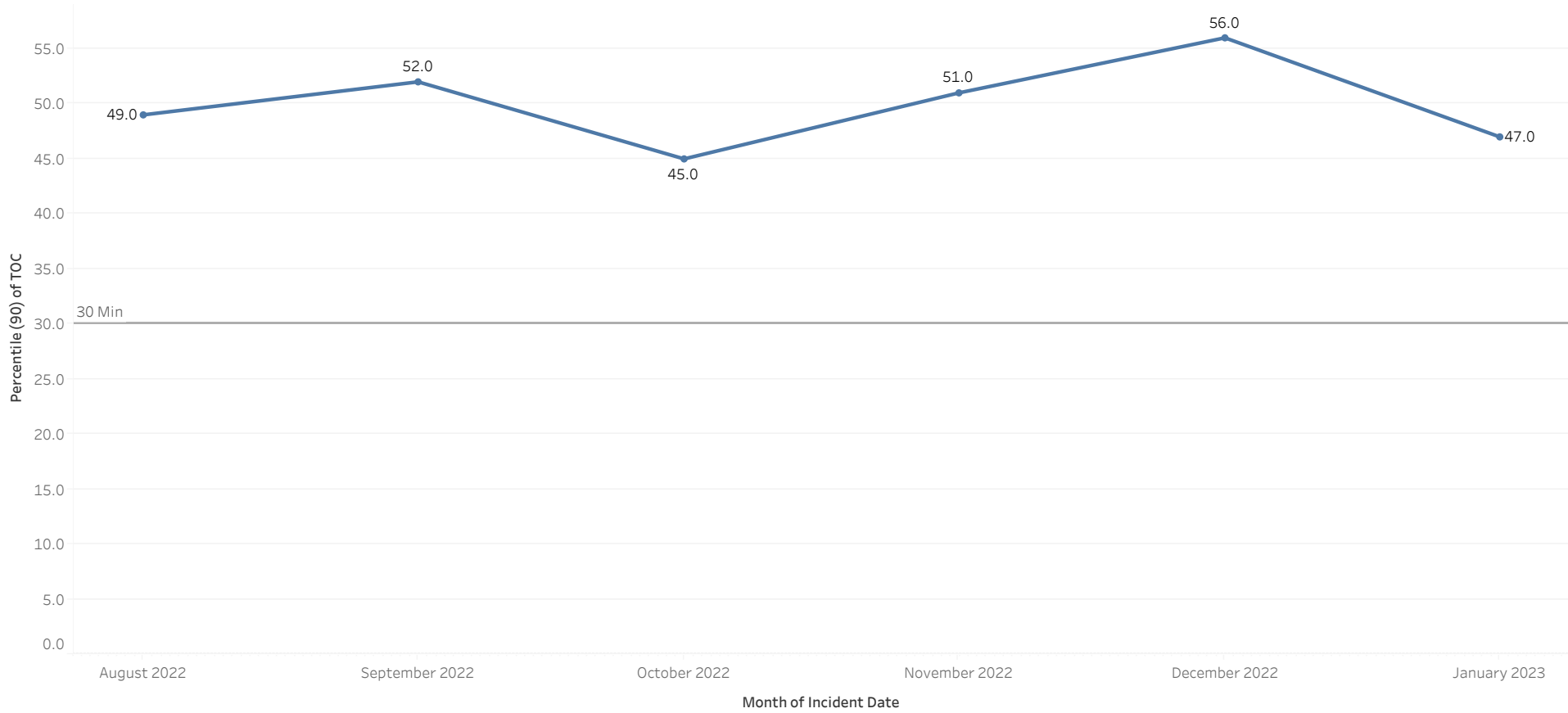
Data label reflects number of APOD >60min



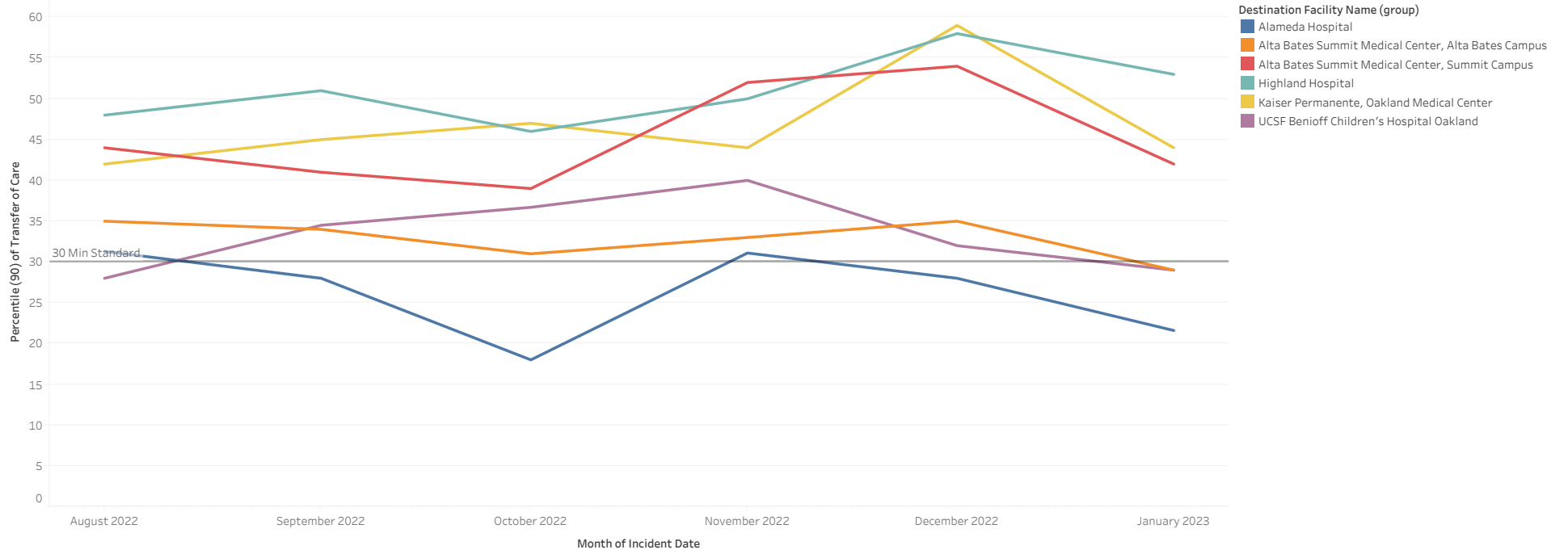
Prev Month 90% APOT



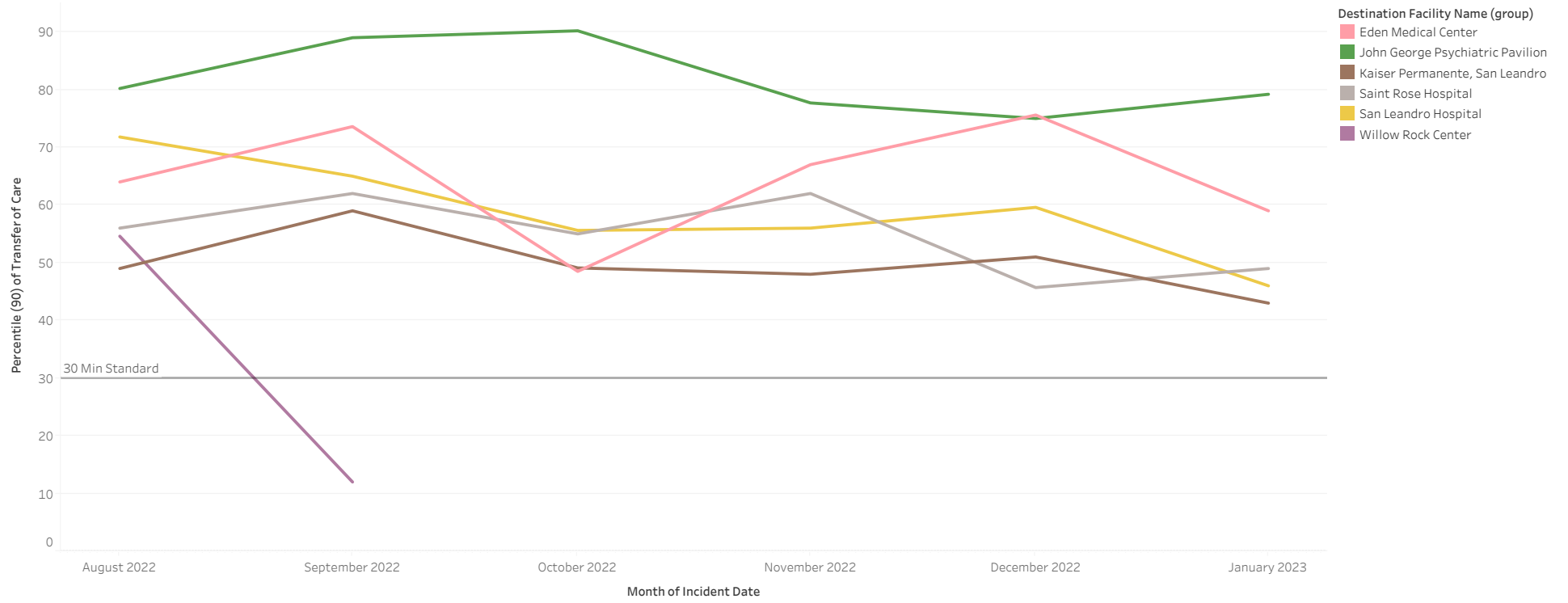
# All Hospital 90% APOT



# North 90% APOT

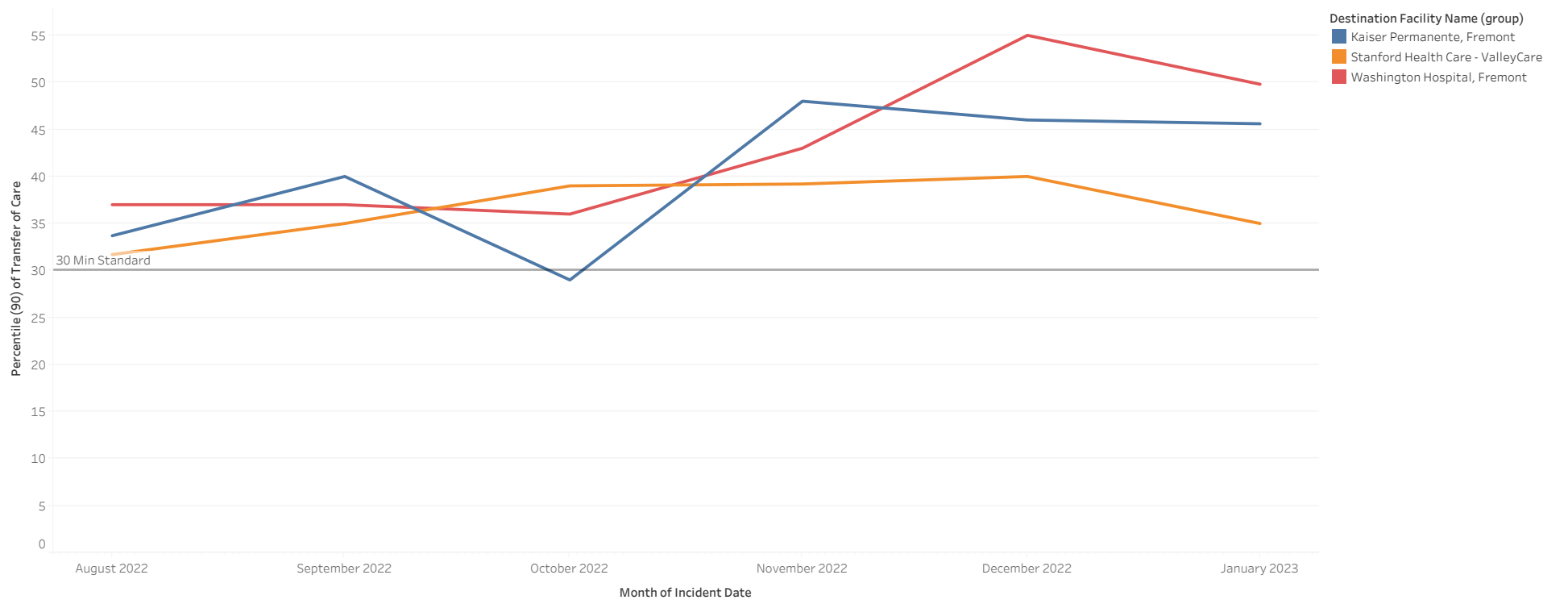


# Mid 90% APOT





# South and East 90% APOT



# APOT Bins Graph by Agency

