

Summary

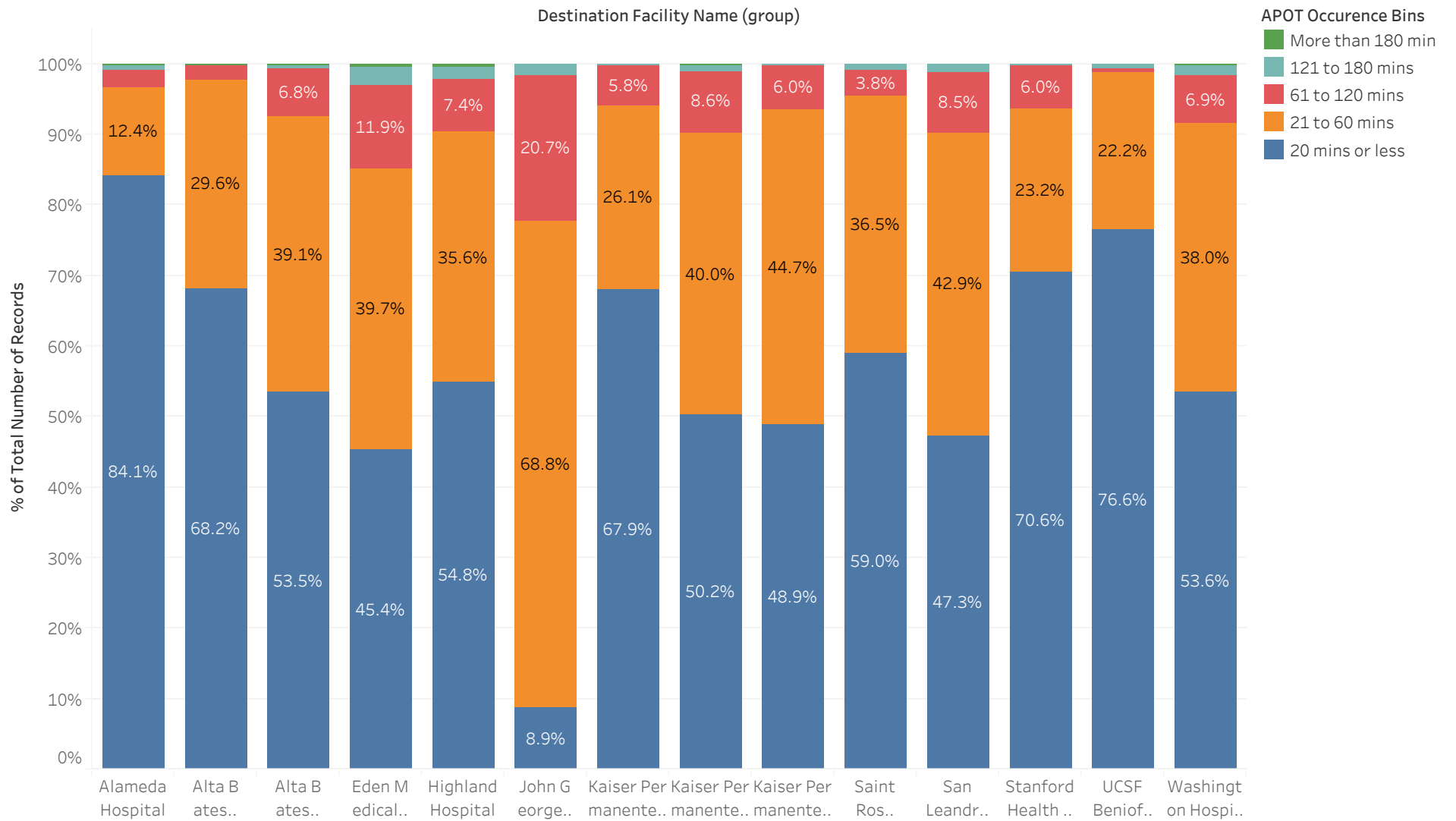
Destination Facility Name (group)	Avg. Transfer of Care	Percentile (90) of Transfer of ..	APOD>60m..	APOD % of N	
Alameda Hospital	15.5	28.0	12	3.5%	347
Alta Bates Summit Medic..	19.6	35.3	12	2.2%	538
Alta Bates Summit Medic..	26.0	54.0	98	7.4%	1,324
Eden Medical Center	33.7	75.6	159	14.9%	1,065
Highland Hospital	27.6	58.0	118	9.5%	1,238
John George Psychiatric P..	45.8	75.0	53	22.4%	237
Kaiser Permanente, Frem..	21.8	46.0	35	6.0%	583
Kaiser Permanente, Oakla..	29.6	59.0	82	9.7%	844
Kaiser Permanente, San L..	26.3	51.0	54	6.4%	843
Saint Rose Hospital	23.9	45.8	17	4.6%	373
San Leandro Hospital	29.6	59.8	55	9.8%	562
Stanford Health Care - Val..	20.9	40.0	43	6.3%	686
UCSF Benioff Children's H..	17.6	32.0	2	1.3%	158
Washington Hospital, Fre..	27.8	55.0	92	8.5%	1,088

APOT Bins

APOT Occurrence Bins

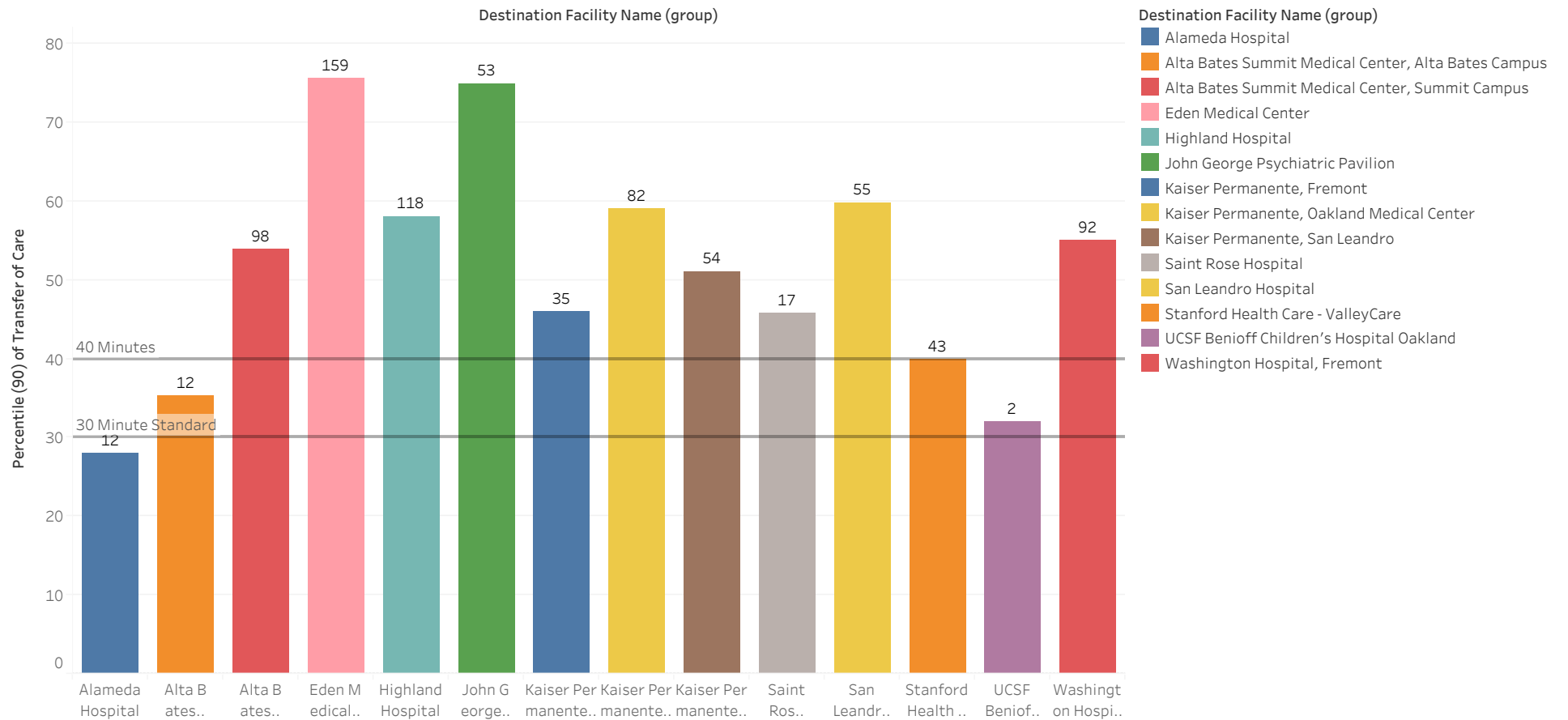
Destination Facility Name (group)	20 mins or less	21 to 60 mins	61 to 120 mins	121 to 180 mins	More than 18..	Grand Total
Alameda Hospital	292 84.15%	43 12.39%	9 2.59%	2 0.58%	1 0.29%	347 100.00%
Alta Bates Summit Medical Center, Alta Bates Campus	367 68.22%	159 29.55%	11 2.04%		1 0.19%	538 100.00%
Alta Bates Summit Medical Center, Summit Campus	708 53.47%	518 39.12%	90 6.80%	6 0.45%	2 0.15%	1,324 100.00%
Eden Medical Center	483 45.35%	423 39.72%	127 11.92%	27 2.54%	5 0.47%	1,065 100.00%
Highland Hospital	679 54.85%	441 35.62%	91 7.35%	22 1.78%	5 0.40%	1,238 100.00%
John George Psychiatric Pavilion	21 8.86%	163 68.78%	49 20.68%	4 1.69%		237 100.00%
Kaiser Permanente, Fremont	396 67.92%	152 26.07%	34 5.83%	1 0.17%		583 100.00%
Kaiser Permanente, Oakland Medical Center	424 50.24%	338 40.05%	73 8.65%	7 0.83%	2 0.24%	844 100.00%
Kaiser Permanente, San Leandro	412 48.87%	377 44.72%	51 6.05%	3 0.36%		843 100.00%
Saint Rose Hospital	220 58.98%	136 36.46%	14 3.75%	3 0.80%		373 100.00%
San Leandro Hospital	266 47.33%	241 42.88%	48 8.54%	7 1.25%		562 100.00%
Stanford Health Care - ValleyCare	484 70.55%	159 23.18%	41 5.98%	2 0.29%		686 100.00%
UCSF Benioff Children's Hospital Oakland	121 76.58%	35 22.15%	1 0.63%	1 0.63%		158 100.00%
Washington Hospital, Fremont	583 53.58%	413 37.96%	75 6.89%	15 1.38%	2 0.18%	1,088 100.00%
Grand Total	5,456 55.19%	3,598 36.39%	714 7.22%	100 1.01%	18 0.18%	9,886 100.00%

APOT Bins Graph

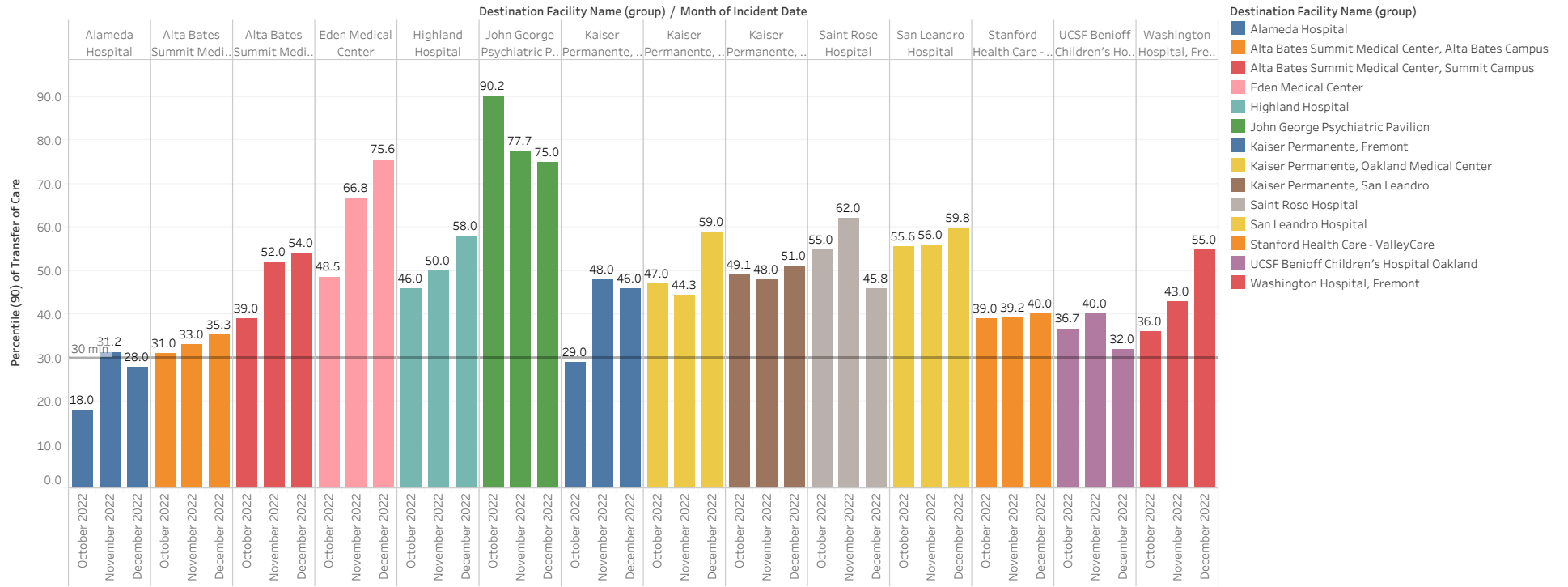


Current Month 90% APOT

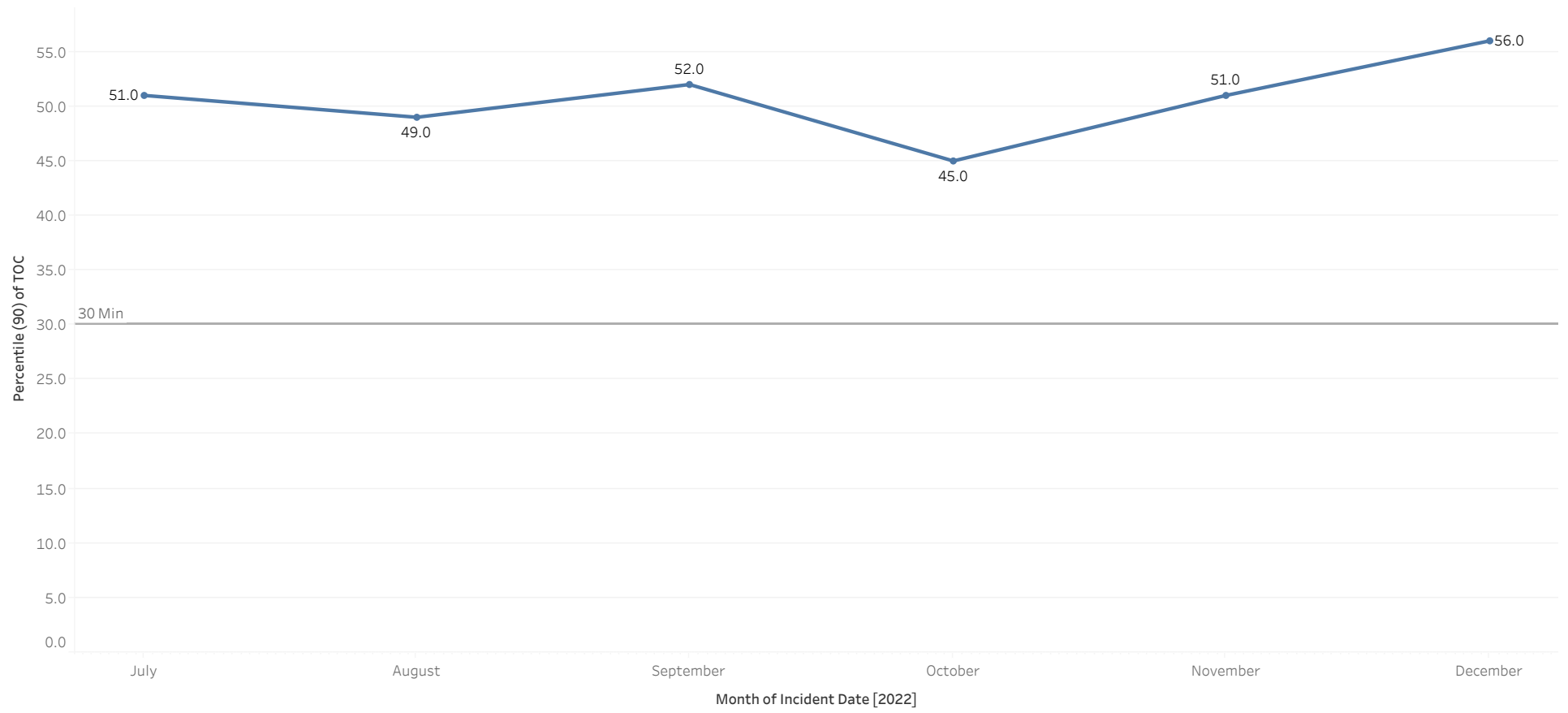
Data label reflects number of APOD >60min



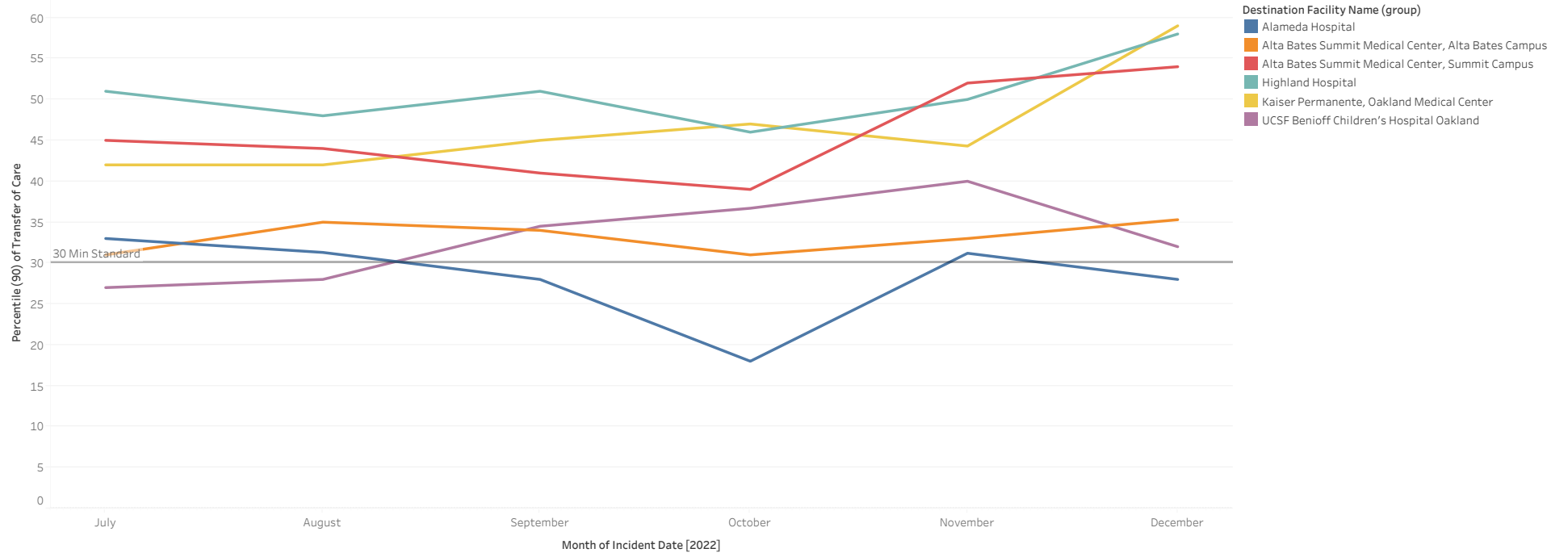
Prev Month 90% APOT



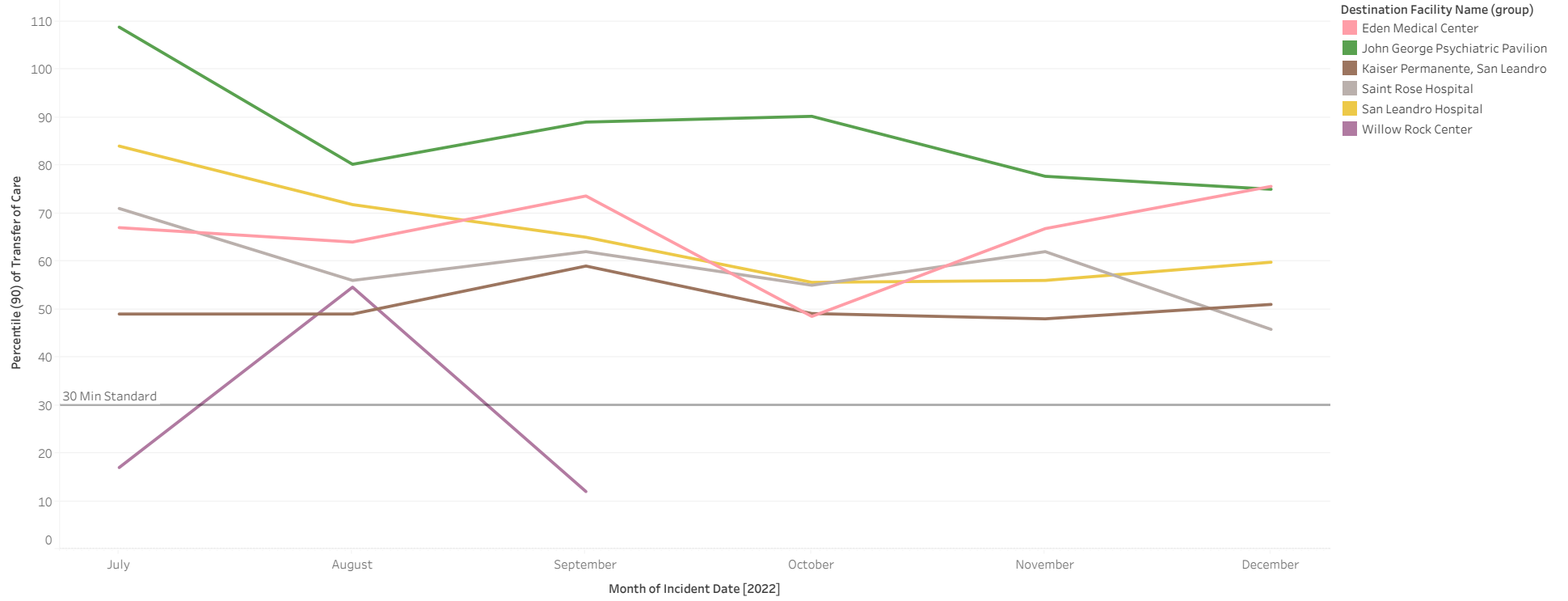
All Hospital 90% APOT



North 90% APOT



Mid 90% APOT



South and East 90% APOT



APOT Bins Graph by Agency

