

APOT Report April 2022

File created on: 5/2/2022 8:41:49 AM

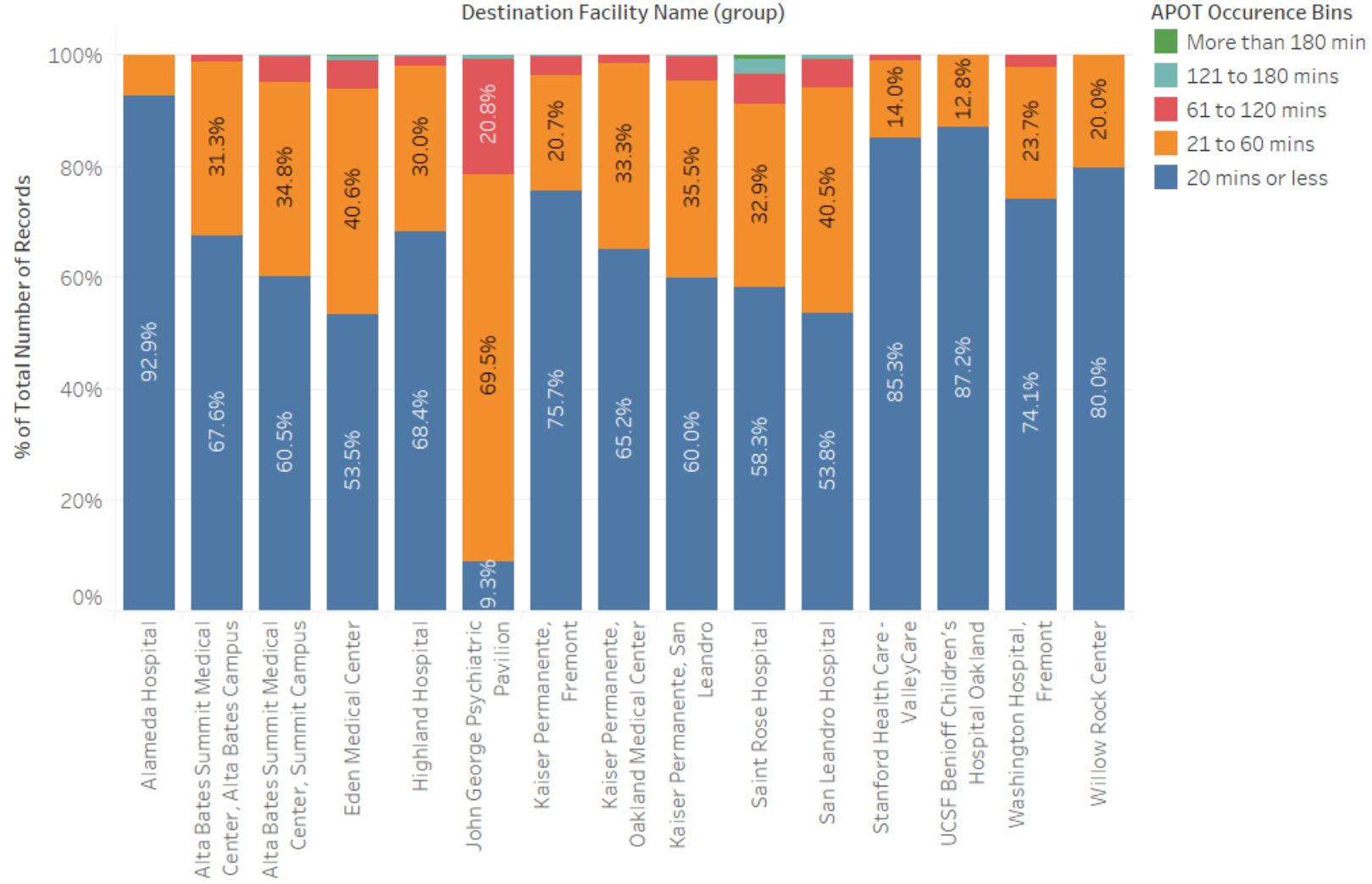
Summary

Destination Facility Name (group)	Avg. TOCv3	Percentile (90)		APOD % of N	
		of TOCv3	APOD>60m..		
Alameda Hospital	10.4	18.0	0	0.0%	266
Alta Bates Summit Medic..	18.7	35.0	5	1.1%	454
Alta Bates Summit Medic..	22.4	44.0	53	4.7%	1,127
Eden Medical Center	25.1	50.0	55	5.9%	933
Highland Hospital	18.9	36.0	20	1.6%	1,214
John George Psychiatric P..	45.6	77.0	48	21.2%	226
Kaiser Permanente, Frem..	18.5	36.0	19	3.7%	518
Kaiser Permanente, Oakla..	18.4	32.2	10	1.4%	699
Kaiser Permanente, San L..	22.6	44.0	31	4.5%	695
Saint Rose Hospital	27.5	56.0	34	8.8%	386
San Leandro Hospital	25.7	50.9	25	5.7%	442
Stanford Health Care - Val..	13.5	24.0	4	0.7%	605
UCSF Benioff Children's H..	11.6	21.0	0	0.0%	94
Washington Hospital, Fre..	18.1	31.3	17	2.2%	788
Willow Rock Center	15.0	24.2	0	0.0%	5

APOT Bins

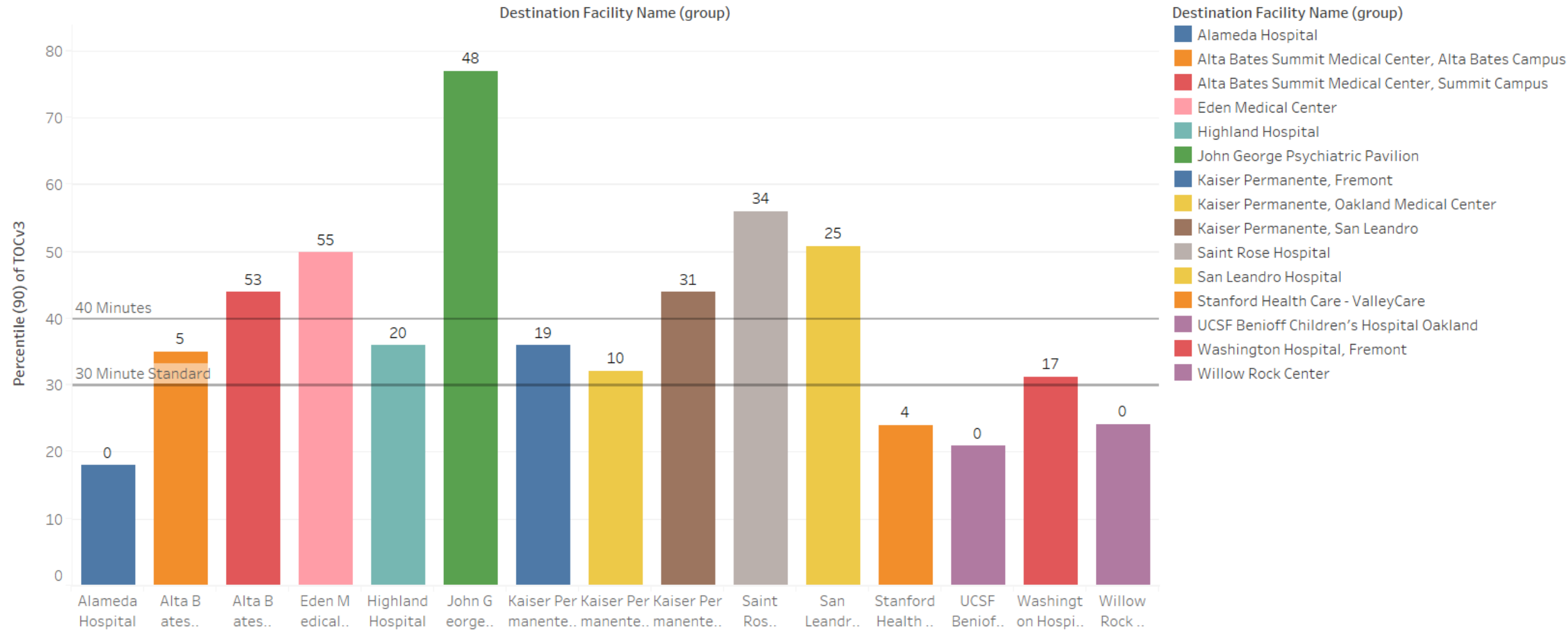
Destination Facility Name..	APOT Occurence Bins					Grand T..
	20 mins..	21 to 6..	61 to 1..	121 to ..	More th..	
Alameda Hospital	247 92.86%	19 7.14%				266 100.00%
Alta Bates Summit Medical Center, Alta Bates Campus	307 67.62%	142 31.28%	5 1.10%			454 100.00%
Alta Bates Summit Medical Center, Summit Campus	682 60.51%	392 34.78%	50 4.44%	3 0.27%		1,127 100.00%
Eden Medical Center	499 53.48%	379 40.62%	48 5.14%	6 0.64%	1 0.11%	933 100.00%
Highland Hospital	830 68.37%	364 29.98%	18 1.48%	2 0.16%		1,214 100.00%
John George Psychiatric Pavilion	21 9.29%	157 69.47%	47 20.80%	1 0.44%		226 100.00%
Kaiser Permanente, Fremont	392 75.68%	107 20.66%	18 3.47%	1 0.19%		518 100.00%
Kaiser Permanente, Oakland Medical Center	456 65.24%	233 33.33%	10 1.43%			699 100.00%
Kaiser Permanente, San Leandro	417 60.00%	247 35.54%	29 4.17%	2 0.29%		695 100.00%
Saint Rose Hospital	225 58.29%	127 32.90%	22 5.70%	10 2.59%	2 0.52%	386 100.00%
San Leandro Hospital	238 53.85%	179 40.50%	23 5.20%	2 0.45%		442 100.00%
Stanford Health Care - ValleyCare	516 85.29%	85 14.05%	4 0.66%			605 100.00%
UCSF Benioff Children's Hospital Oakland	82 87.23%	12 12.77%				94 100.00%
Washington Hospital, Fremont	584 74.11%	187 23.73%	17 2.16%			788 100.00%
Willow Rock Center	4 80.00%	1 20.00%				5 100.00%
Grand Total	5,500 65.07%	2,631 31.13%	291 3.44%	27 0.32%	3 0.04%	8,452 100.00%

APOT Bins Graph

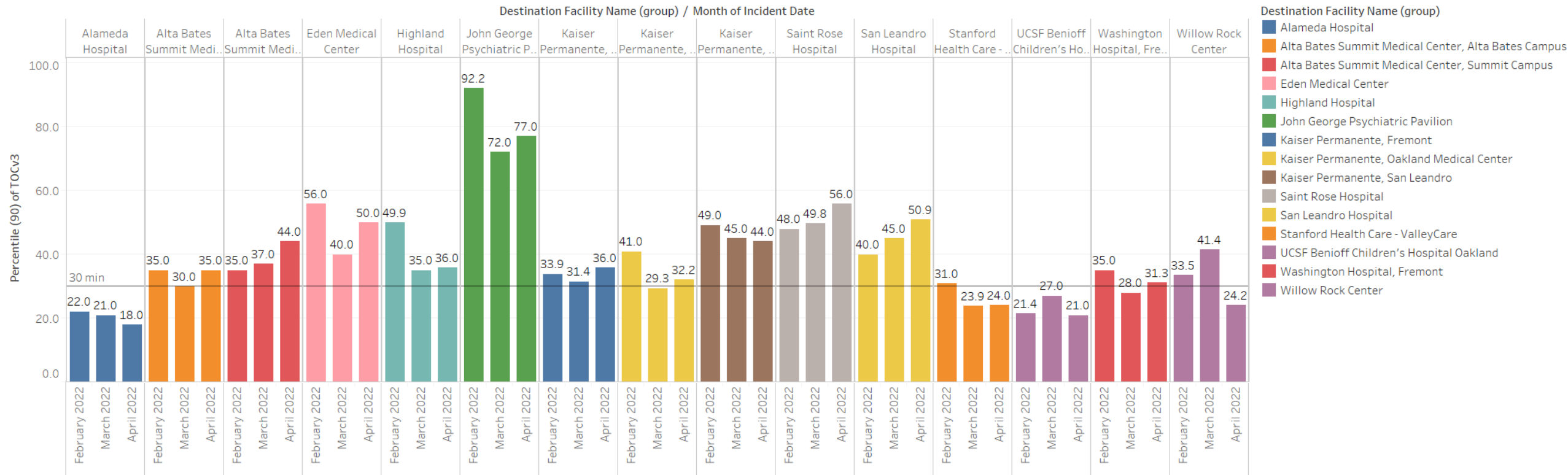


Current Month 90% APOT

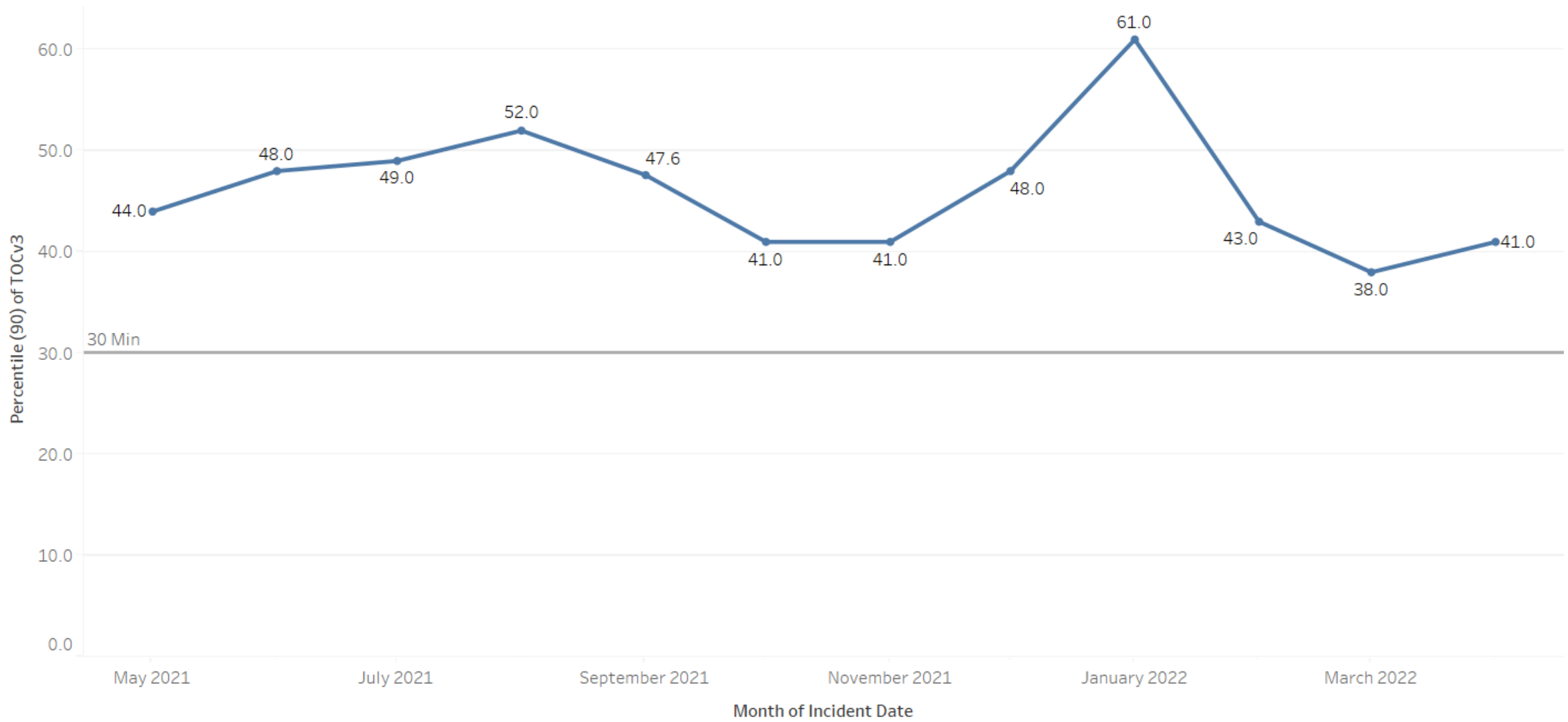
Data label reflects number of APOD >60min



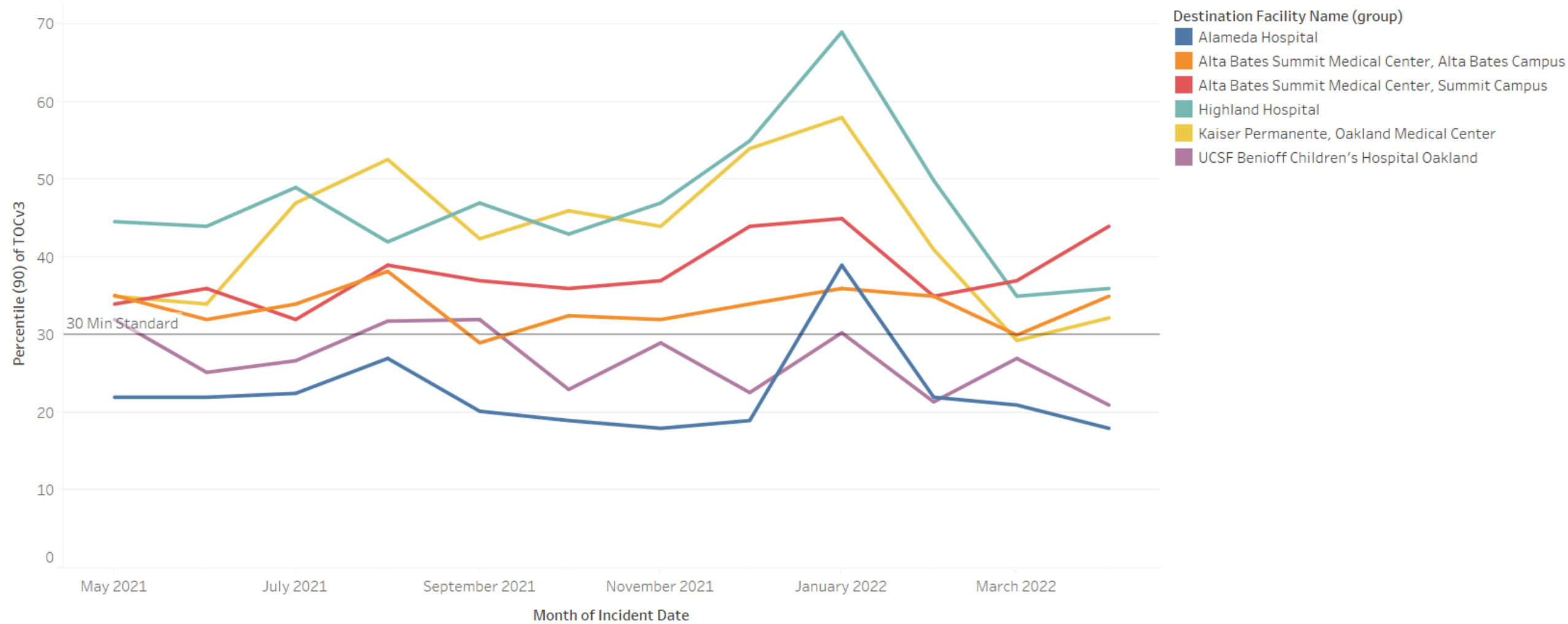
Prev Month 90% APOT



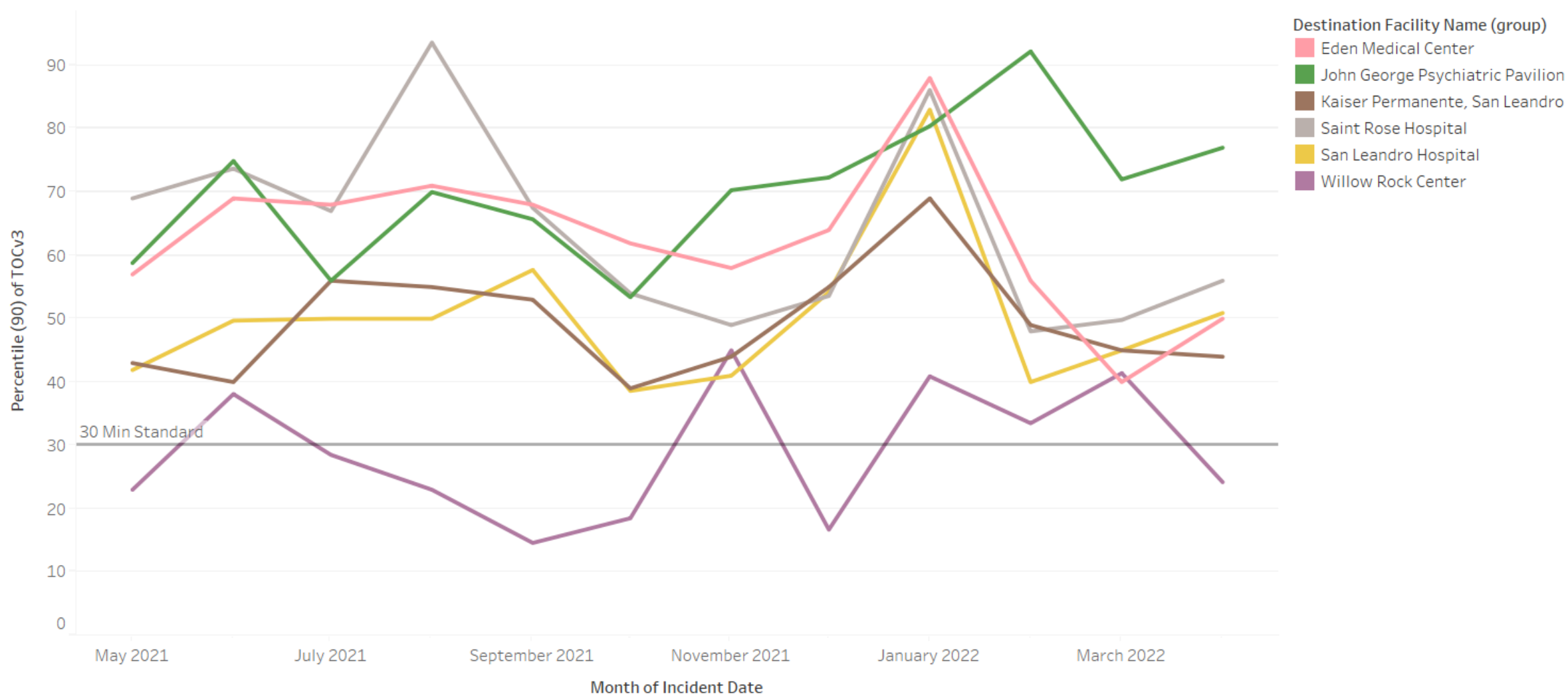
All Hospital 90% APOT



North 90% APOT



Mid 90% APOT



South and East 90% APOT

