

Summary

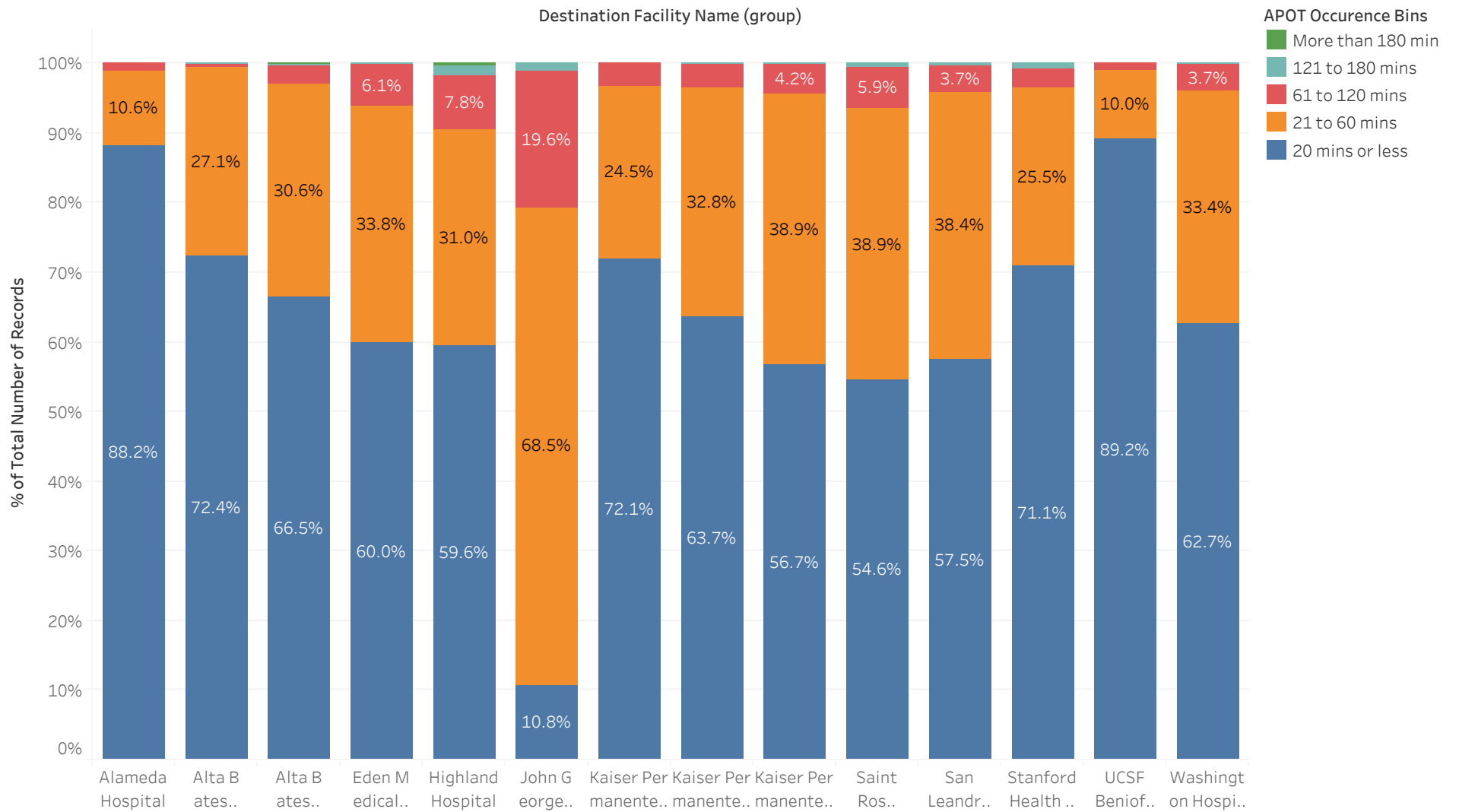
Destination Facility Name (group)	Avg. Transfer of Care	Percentile (90) of Transfer of ..	APOD>60m..	APOD % of N	
Alameda Hospital	11.9	23.0	4	1.2%	330
Alta Bates Summit Medic..	18.0	32.0	3	0.6%	532
Alta Bates Summit Medic..	20.0	38.0	37	2.9%	1,284
Eden Medical Center	23.0	49.1	58	6.2%	940
Highland Hospital	26.0	58.0	109	9.4%	1,160
John George Psychiatric P..	46.0	77.1	54	20.8%	260
Kaiser Permanente, Frem..	18.5	36.1	18	3.4%	530
Kaiser Permanente, Oakla..	20.8	40.0	26	3.4%	758
Kaiser Permanente, San L..	23.1	44.0	34	4.3%	786
Saint Rose Hospital	25.6	52.0	33	6.5%	511
San Leandro Hospital	23.2	44.4	22	4.1%	537
Stanford Health Care Tri-..	19.0	38.0	24	3.4%	698
UCSF Benioff Children's H..	12.1	21.1	1	0.8%	120
Washington Hospital, Fre..	21.8	42.0	37	3.9%	948

APOT Bins

APOT Occurrence Bins

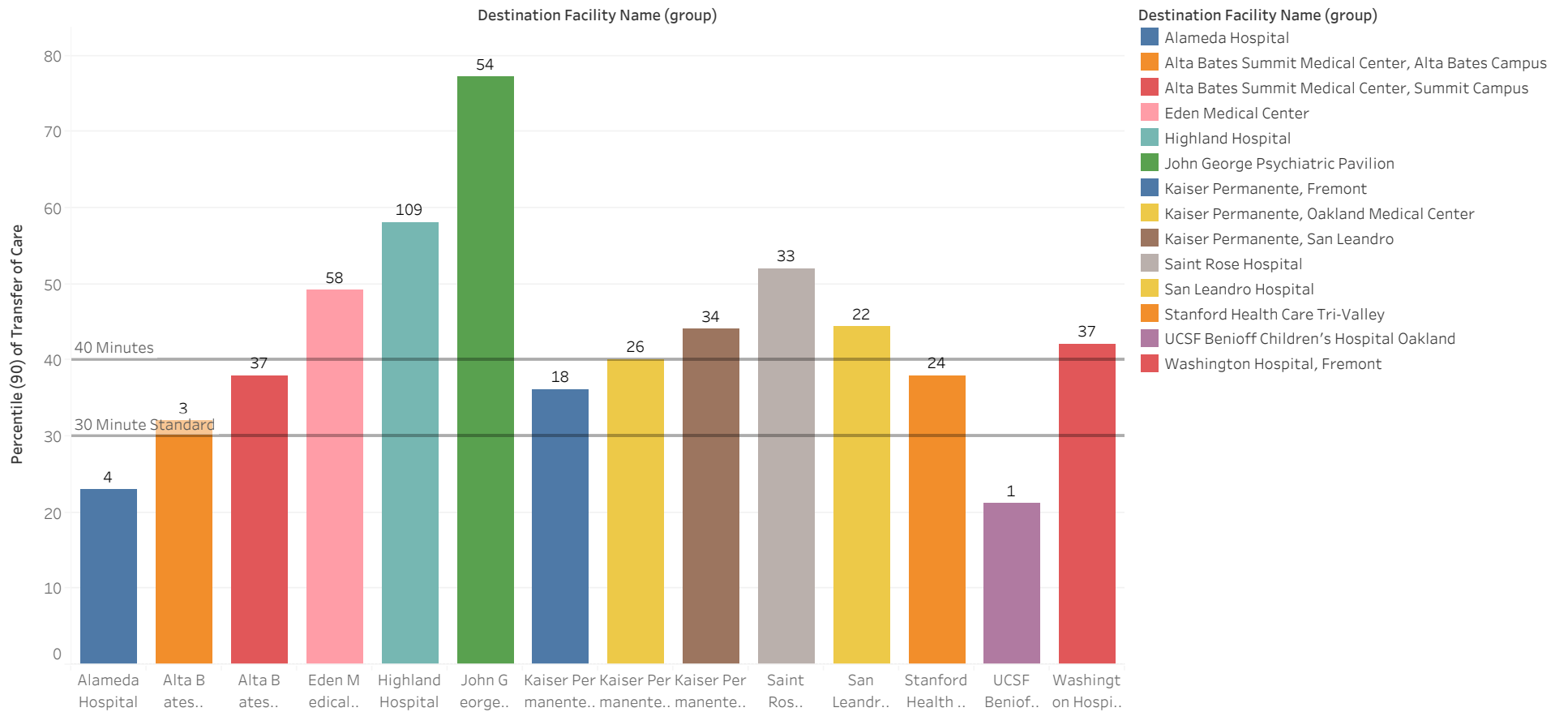
Destination Facility Name (group)	20 mins or less	21 to 60 mins	61 to 120 mins	121 to 180 mins	More than 18..	Grand Total
Alameda Hospital	291 88.18%	35 10.61%	4 1.21%			330 100.00%
Alta Bates Summit Medical Center, Alta Bates Campus	385 72.37%	144 27.07%	2 0.38%	1 0.19%		532 100.00%
Alta Bates Summit Medical Center, Summit Campus	854 66.51%	393 30.61%	34 2.65%	2 0.16%	1 0.08%	1,284 100.00%
Eden Medical Center	564 60.00%	318 33.83%	57 6.06%	1 0.11%		940 100.00%
Highland Hospital	691 59.57%	360 31.03%	90 7.76%	15 1.29%	4 0.34%	1,160 100.00%
John George Psychiatric Pavilion	28 10.77%	178 68.46%	51 19.62%	3 1.15%		260 100.00%
Kaiser Permanente, Fremont	382 72.08%	130 24.53%	18 3.40%			530 100.00%
Kaiser Permanente, Oakland Medical Center	483 63.72%	249 32.85%	25 3.30%	1 0.13%		758 100.00%
Kaiser Permanente, San Leandro	446 56.74%	306 38.93%	33 4.20%	1 0.13%		786 100.00%
Saint Rose Hospital	279 54.60%	199 38.94%	30 5.87%	3 0.59%		511 100.00%
San Leandro Hospital	309 57.54%	206 38.36%	20 3.72%	2 0.37%		537 100.00%
Stanford Health Care Tri-Valley	496 71.06%	178 25.50%	19 2.72%	5 0.72%		698 100.00%
UCSF Benioff Children's Hospital Oakland	107 89.17%	12 10.00%	1 0.83%			120 100.00%
Washington Hospital, Fremont	594 62.66%	317 33.44%	35 3.69%	2 0.21%		948 100.00%
Grand Total	5,909 62.90%	3,025 32.20%	419 4.46%	36 0.38%	5 0.05%	9,394 100.00%

APOT Bins Graph

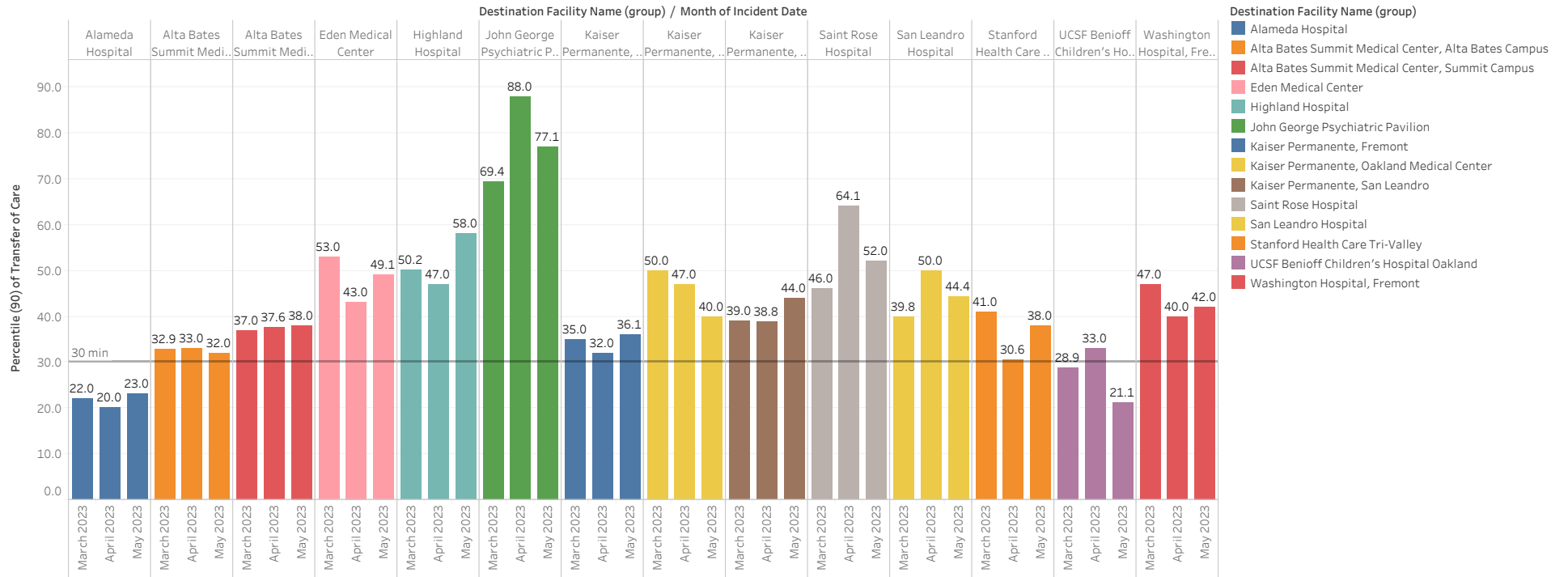


Current Month 90% APOT

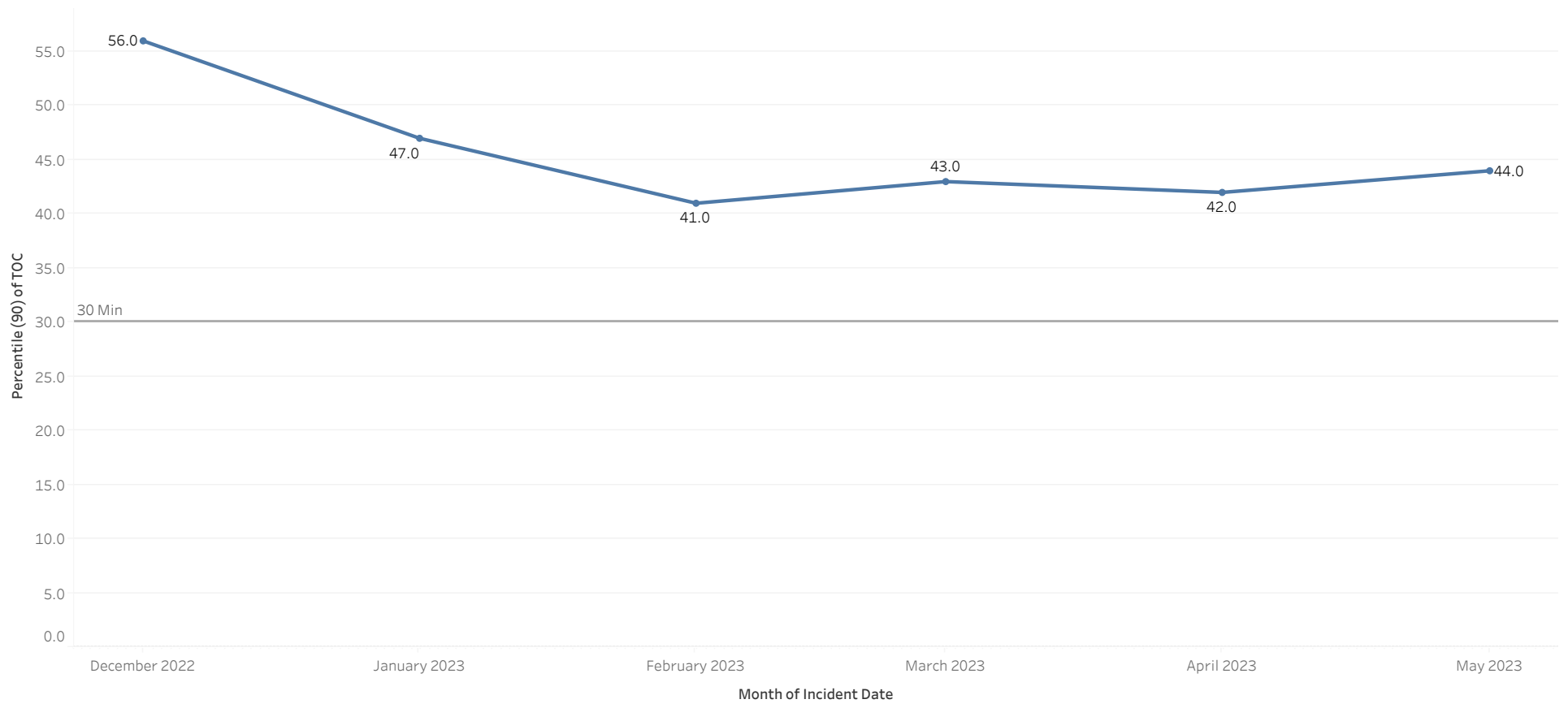
Data label reflects number of APOD >60min



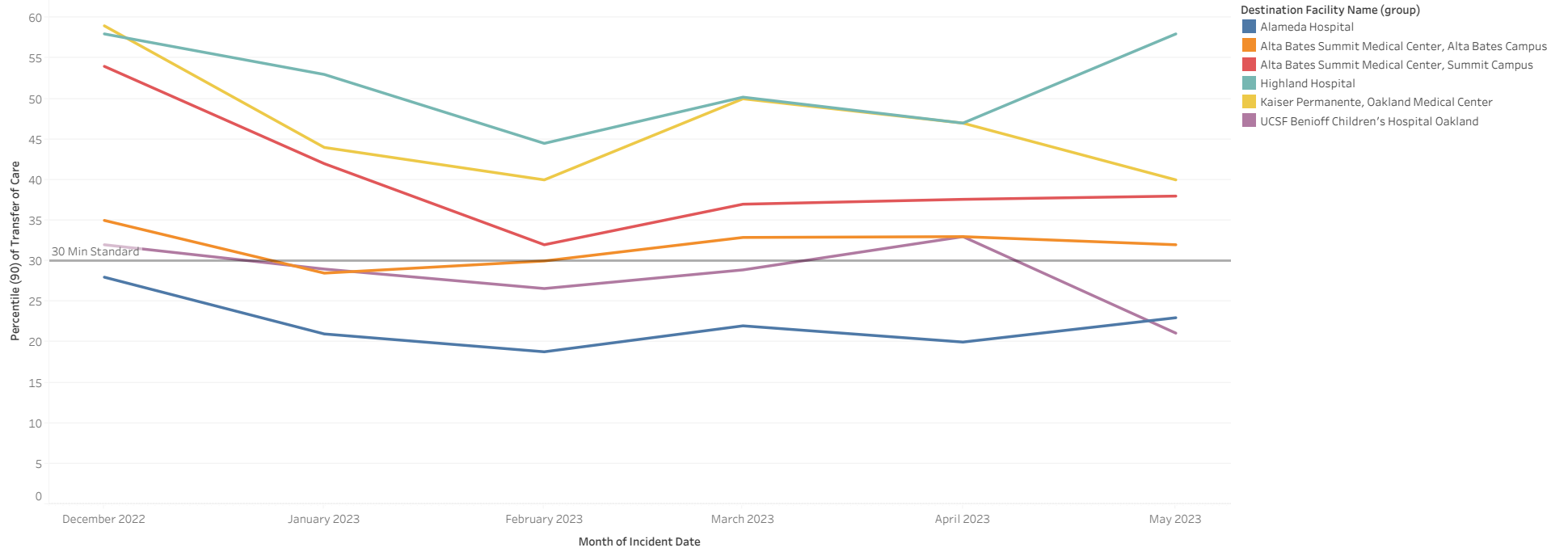
Prev Month 90% APOT



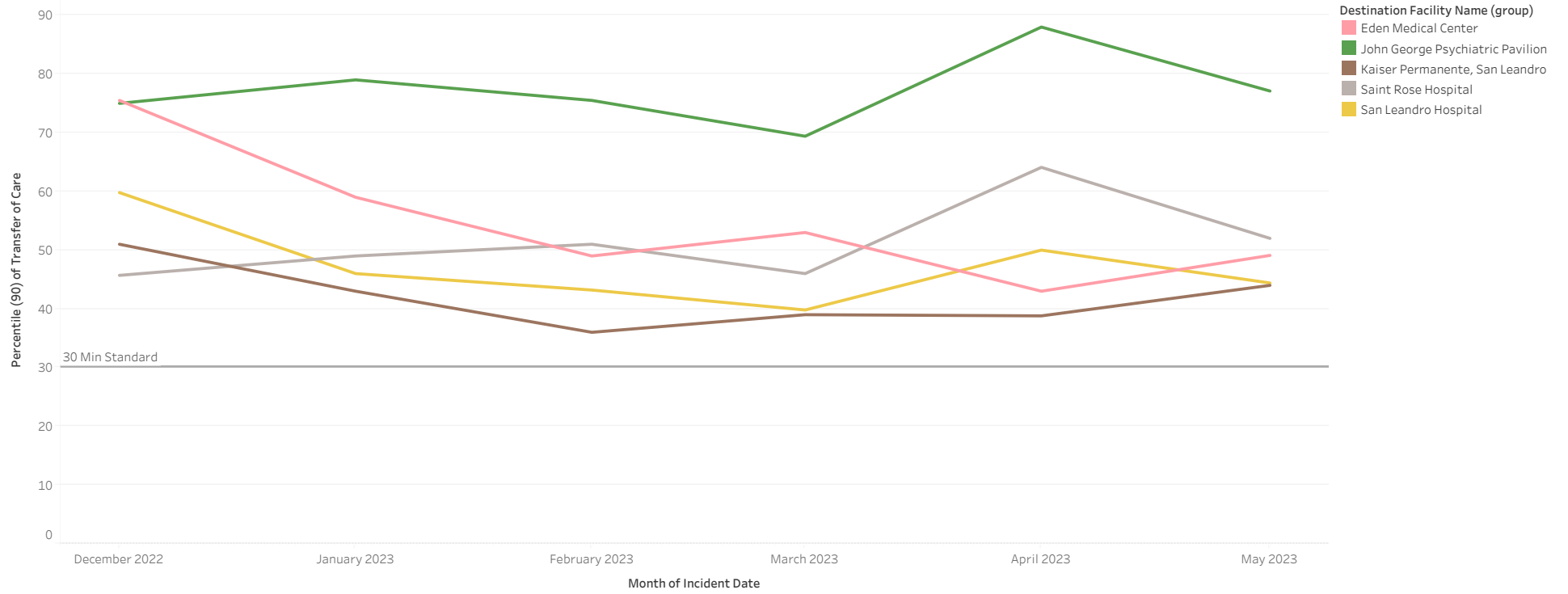
All Hospital 90% APOT



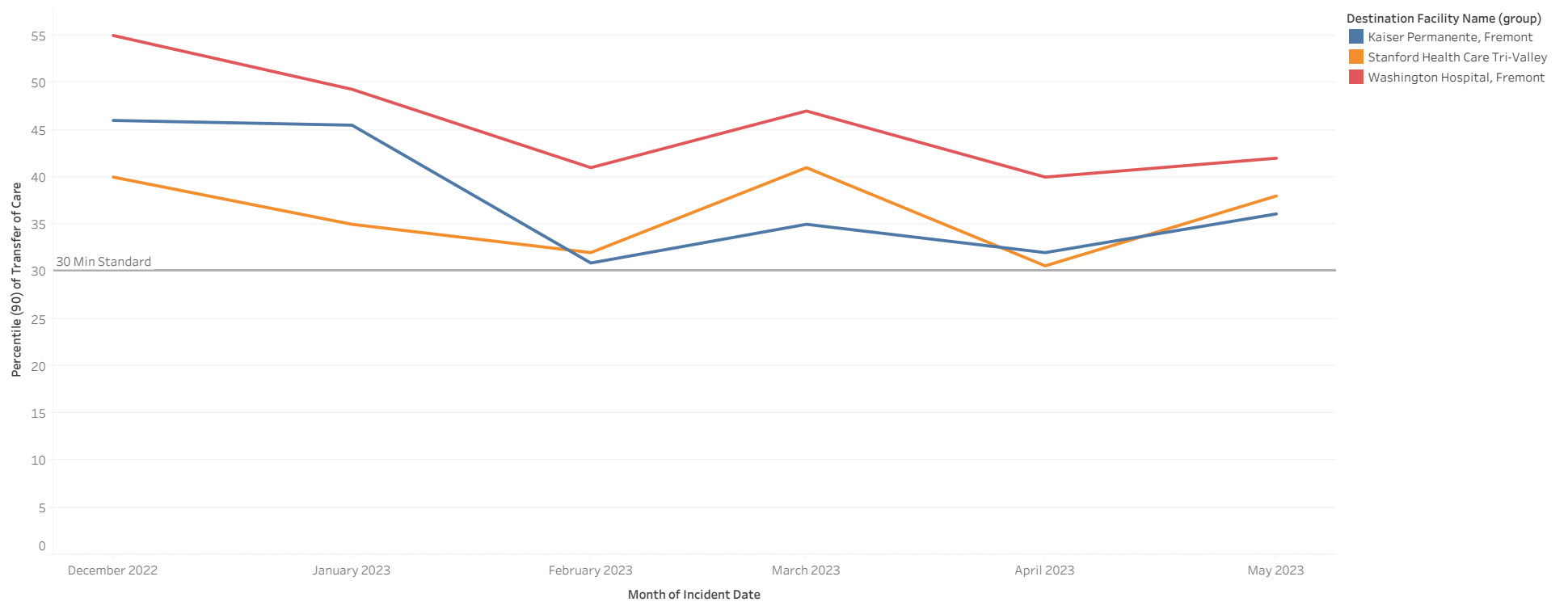
North 90% APOT



Mid 90% APOT



South and East 90% APOT



APOT Bins Graph by Agency

