

Summary

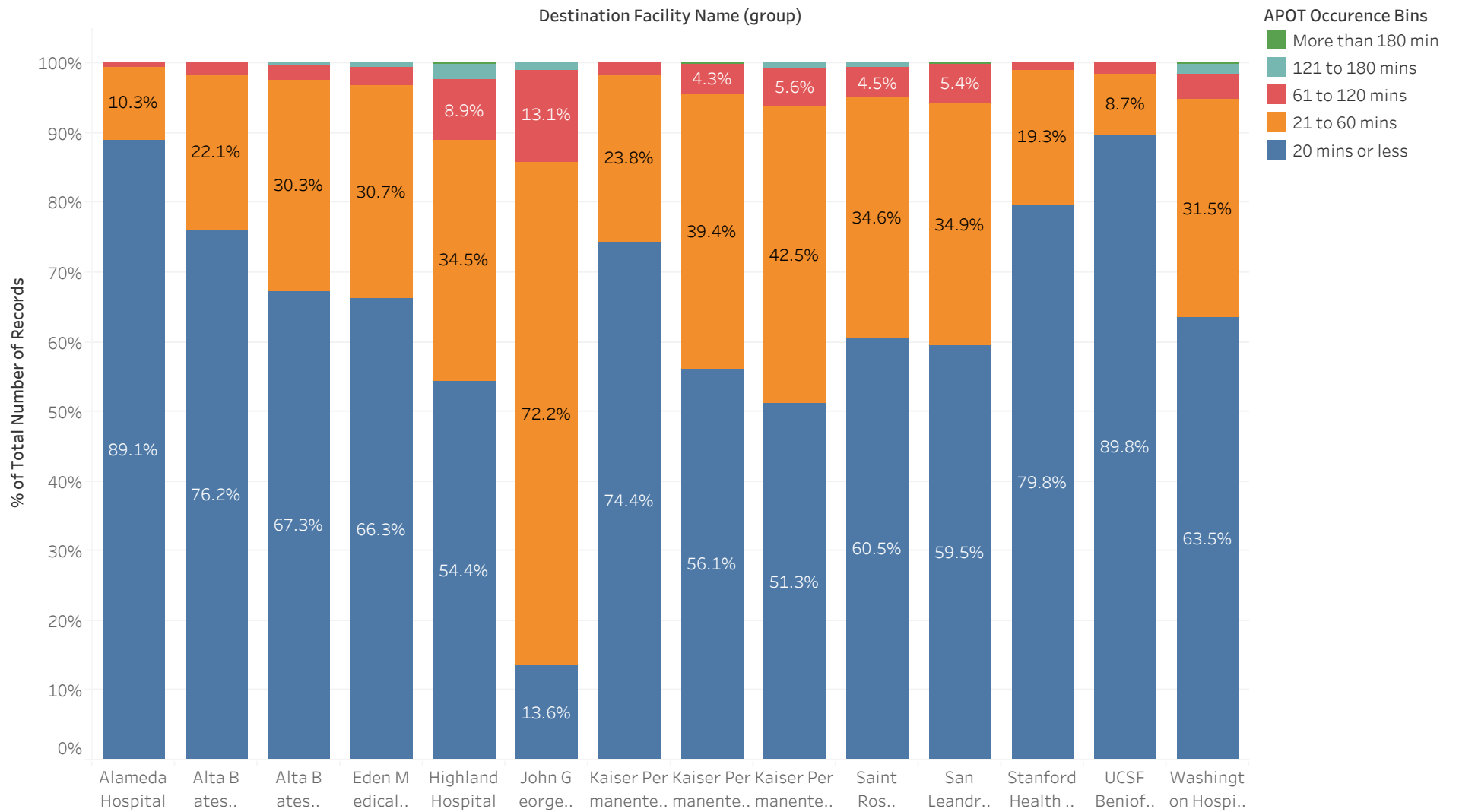
Destination Facility Name (group)	Avg. Transfer of Care	Percentile (90) of Transfer of ..	APOD>60m..	APOD % of N	
Alameda Hospital	11.9	21.0	2	0.6%	329
Alta Bates Summit Medic..	17.2	31.0	9	1.7%	521
Alta Bates Summit Medic..	19.5	37.0	31	2.4%	1,296
Eden Medical Center	20.0	39.8	28	3.1%	913
Highland Hospital	28.2	64.0	109	11.1%	981
John George Psychiatric P..	39.7	69.5	28	14.1%	198
Kaiser Permanente, Frem..	17.6	33.7	9	1.8%	504
Kaiser Permanente, Oakla..	23.8	49.0	33	4.4%	748
Kaiser Permanente, San L..	26.7	52.0	45	6.3%	720
Saint Rose Hospital	23.7	51.0	22	4.9%	448
San Leandro Hospital	23.8	48.0	27	5.6%	481
Stanford Health Care Tri-..	15.3	29.0	6	0.9%	672
UCSF Benioff Children's H..	12.4	20.4	2	1.6%	127
Washington Hospital, Fre..	23.0	44.0	42	5.0%	836

APOT Bins

APOT Occurrence Bins

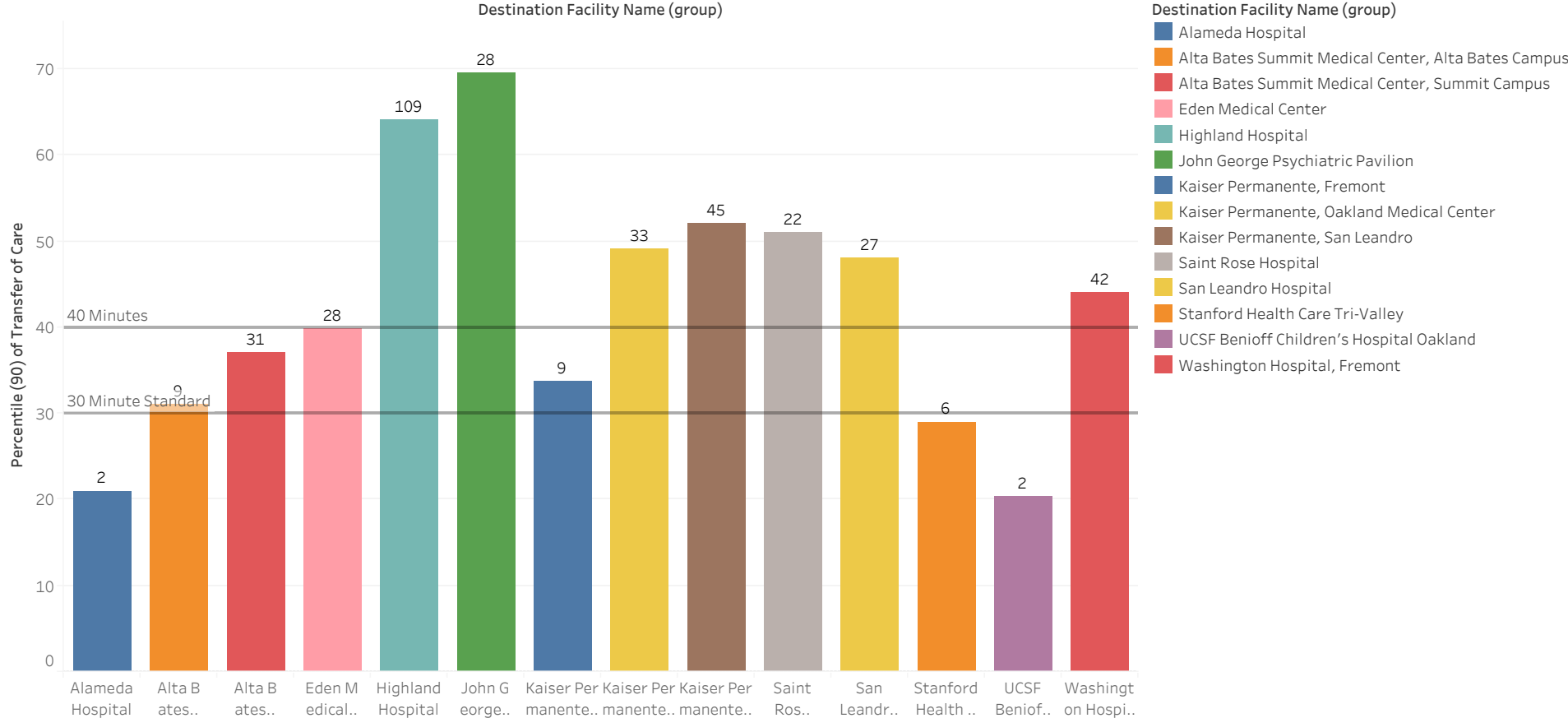
Destination Facility Name (group)	20 mins or less	21 to 60 mins	61 to 120 mins	121 to 180 mins	More than 18..	Grand Total
Alameda Hospital	293 89.06%	34 10.33%	2 0.61%			329 100.00%
Alta Bates Summit Medical Center, Alta Bates Campus	397 76.20%	115 22.07%	9 1.73%			521 100.00%
Alta Bates Summit Medical Center, Summit Campus	872 67.28%	393 30.32%	26 2.01%	5 0.39%		1,296 100.00%
Eden Medical Center	605 66.27%	280 30.67%	24 2.63%	4 0.44%		913 100.00%
Highland Hospital	534 54.43%	338 34.45%	87 8.87%	20 2.04%	2 0.20%	981 100.00%
John George Psychiatric Pavilion	27 13.64%	143 72.22%	26 13.13%	2 1.01%		198 100.00%
Kaiser Permanente, Fremont	375 74.40%	120 23.81%	9 1.79%			504 100.00%
Kaiser Permanente, Oakland Medical Center	420 56.15%	295 39.44%	32 4.28%		1 0.13%	748 100.00%
Kaiser Permanente, San Leandro	369 51.25%	306 42.50%	40 5.56%	5 0.69%		720 100.00%
Saint Rose Hospital	271 60.49%	155 34.60%	20 4.46%	2 0.45%		448 100.00%
San Leandro Hospital	286 59.46%	168 34.93%	26 5.41%		1 0.21%	481 100.00%
Stanford Health Care Tri-Valley	536 79.76%	130 19.35%	6 0.89%			672 100.00%
UCSF Benioff Children's Hospital Oakland	114 89.76%	11 8.66%	2 1.57%			127 100.00%
Washington Hospital, Fremont	531 63.52%	263 31.46%	30 3.59%	11 1.32%	1 0.12%	836 100.00%
Grand Total	5,630 64.17%	2,751 31.35%	339 3.86%	49 0.56%	5 0.06%	8,774 100.00%

APOT Bins Graph

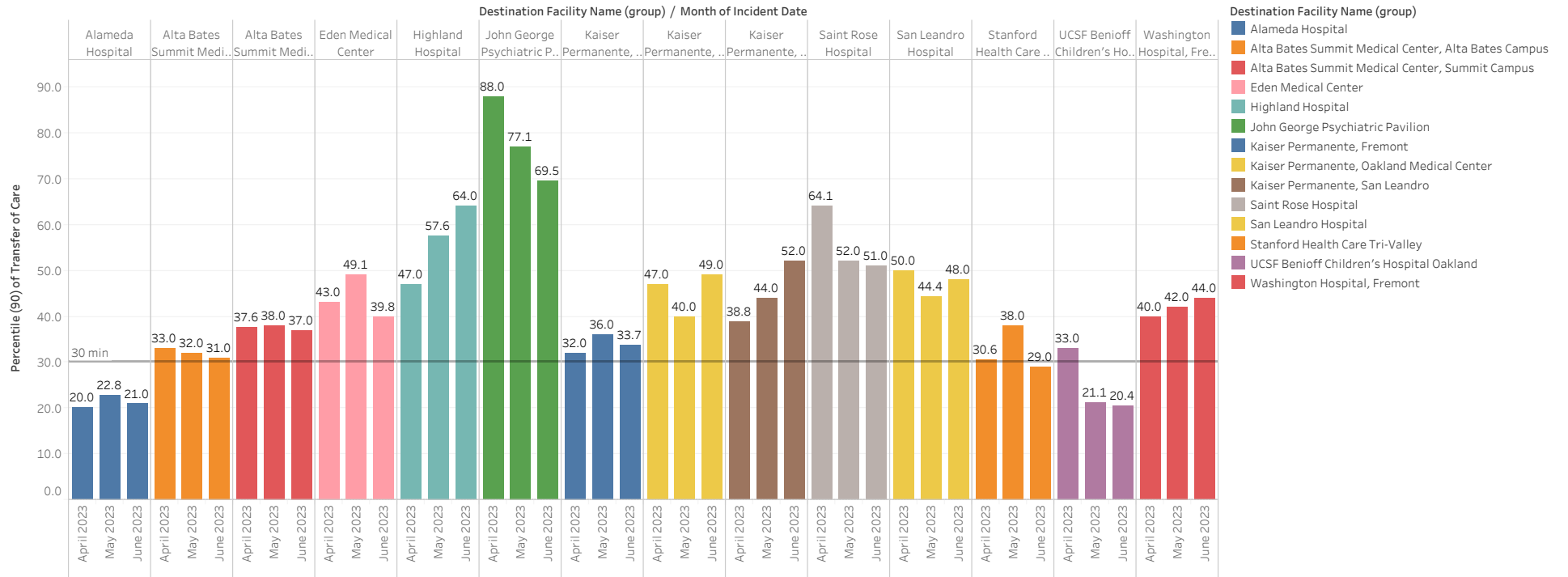


Current Month 90% APOT

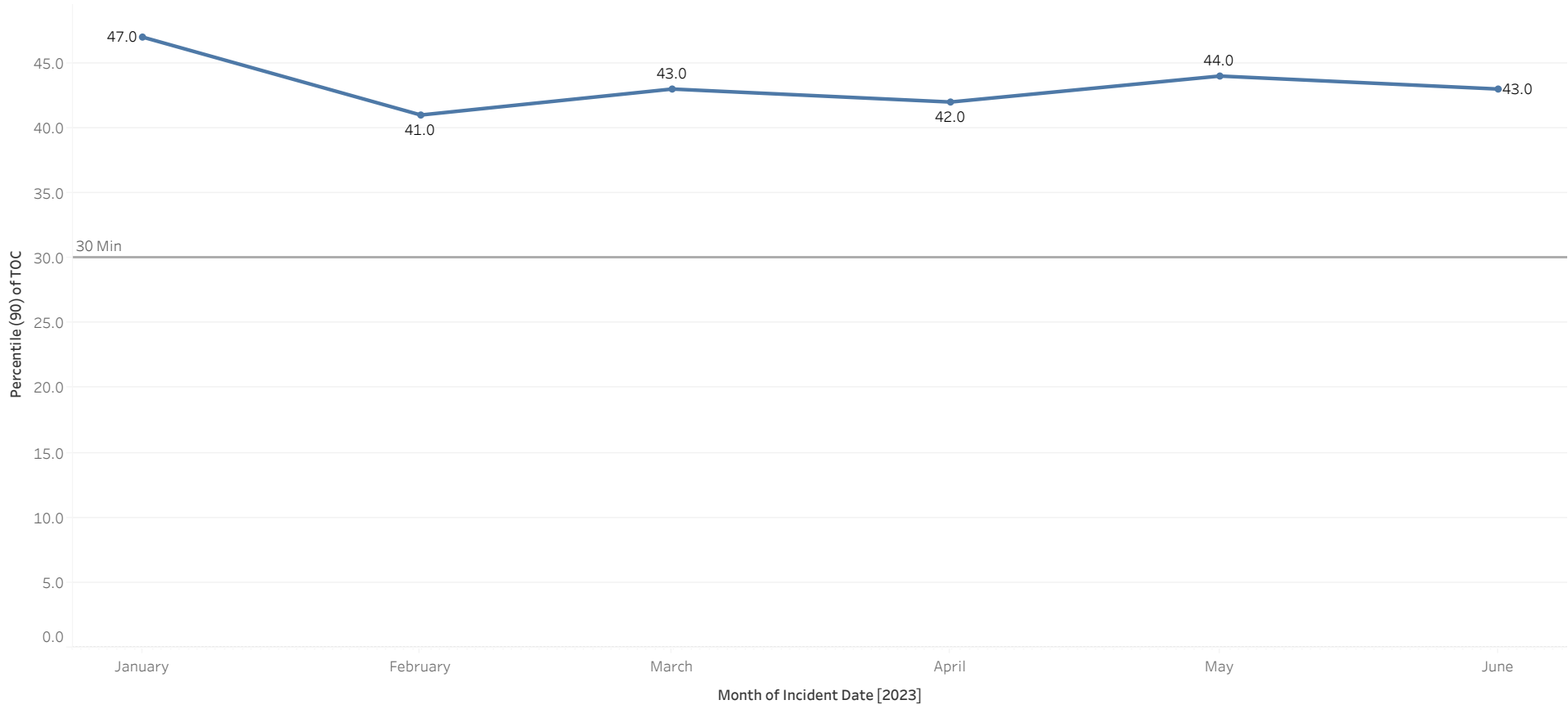
Data label reflects number of APOD >60min



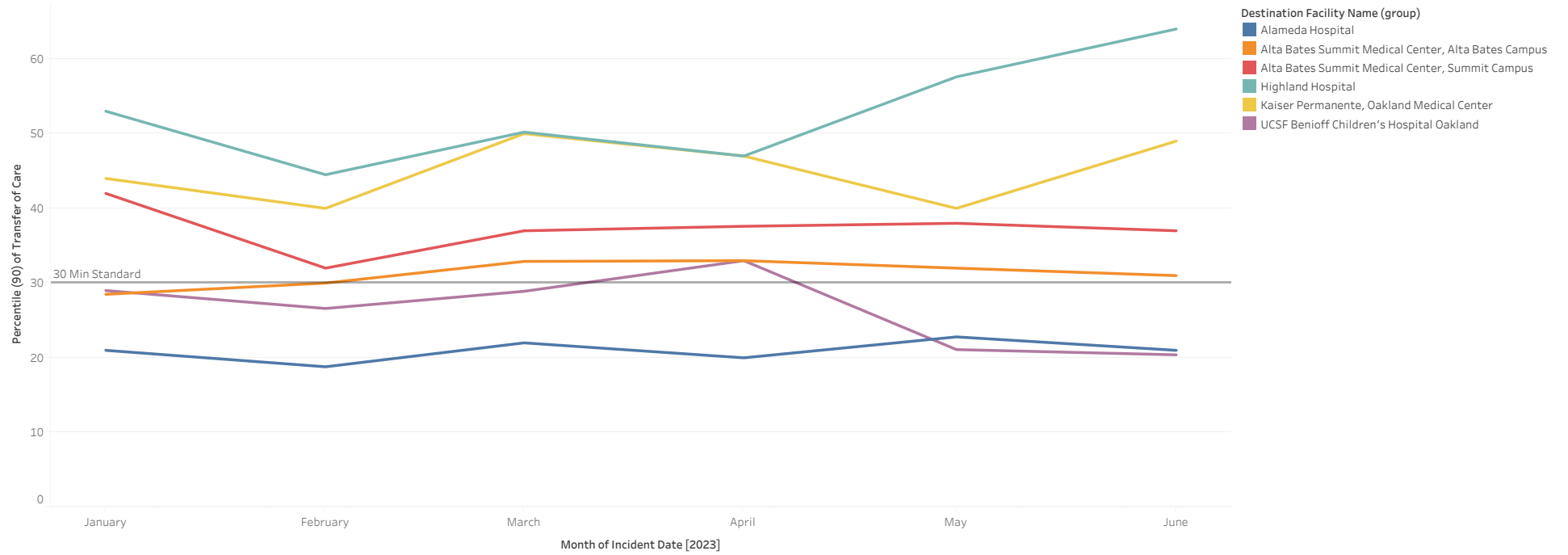
Prev Month 90% APOT



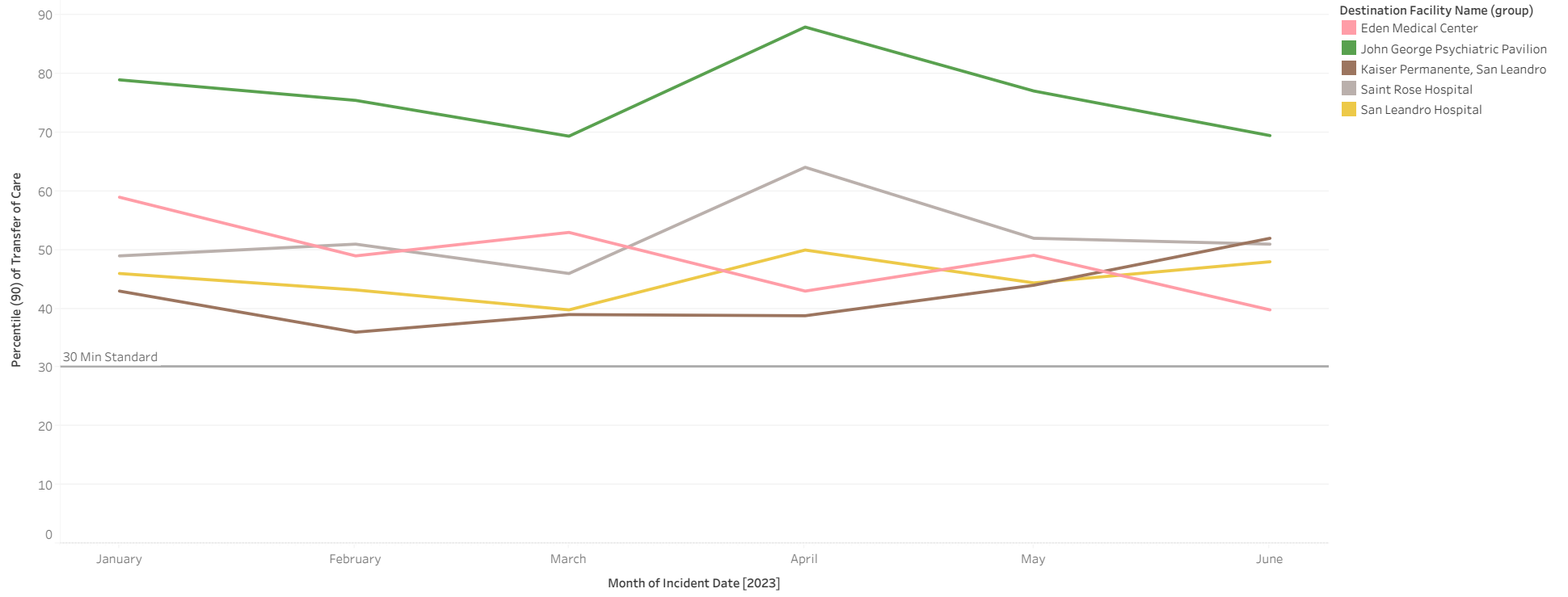
All Hospital 90% APOT



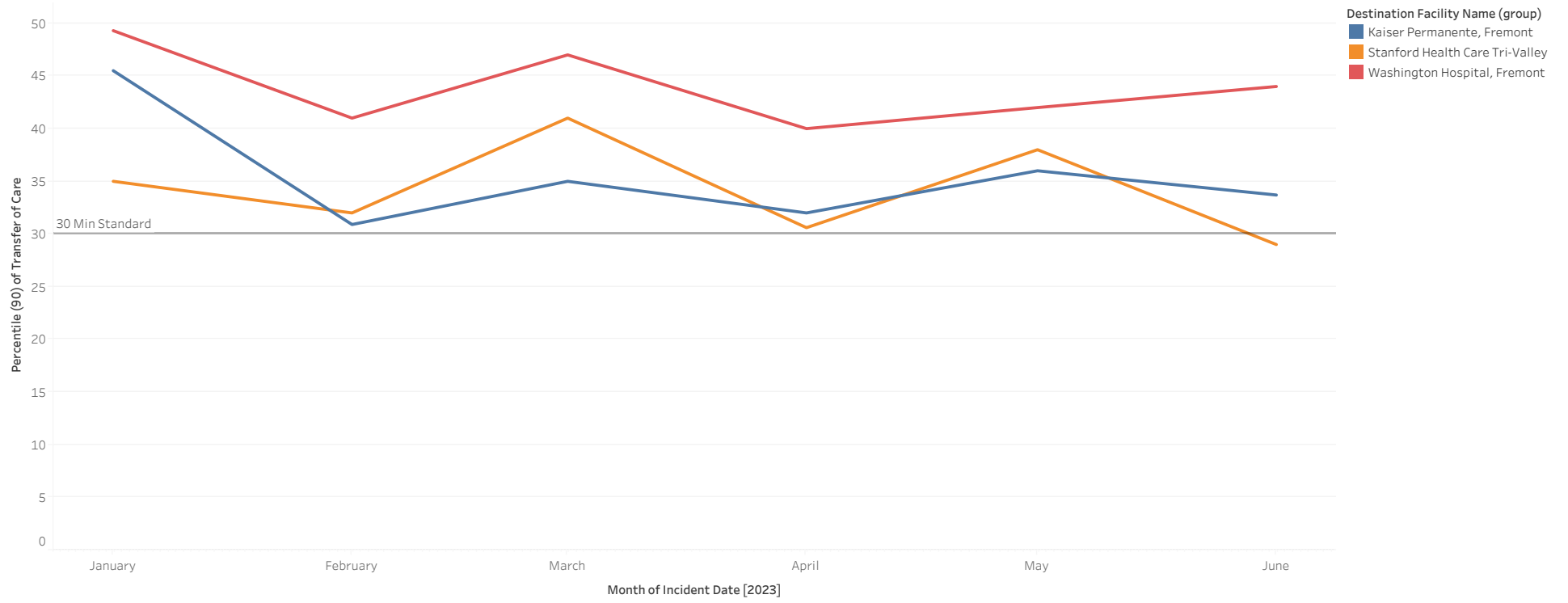
North 90% APOT



Mid 90% APOT



South and East 90% APOT



APOT Bins Graph by Agency

