

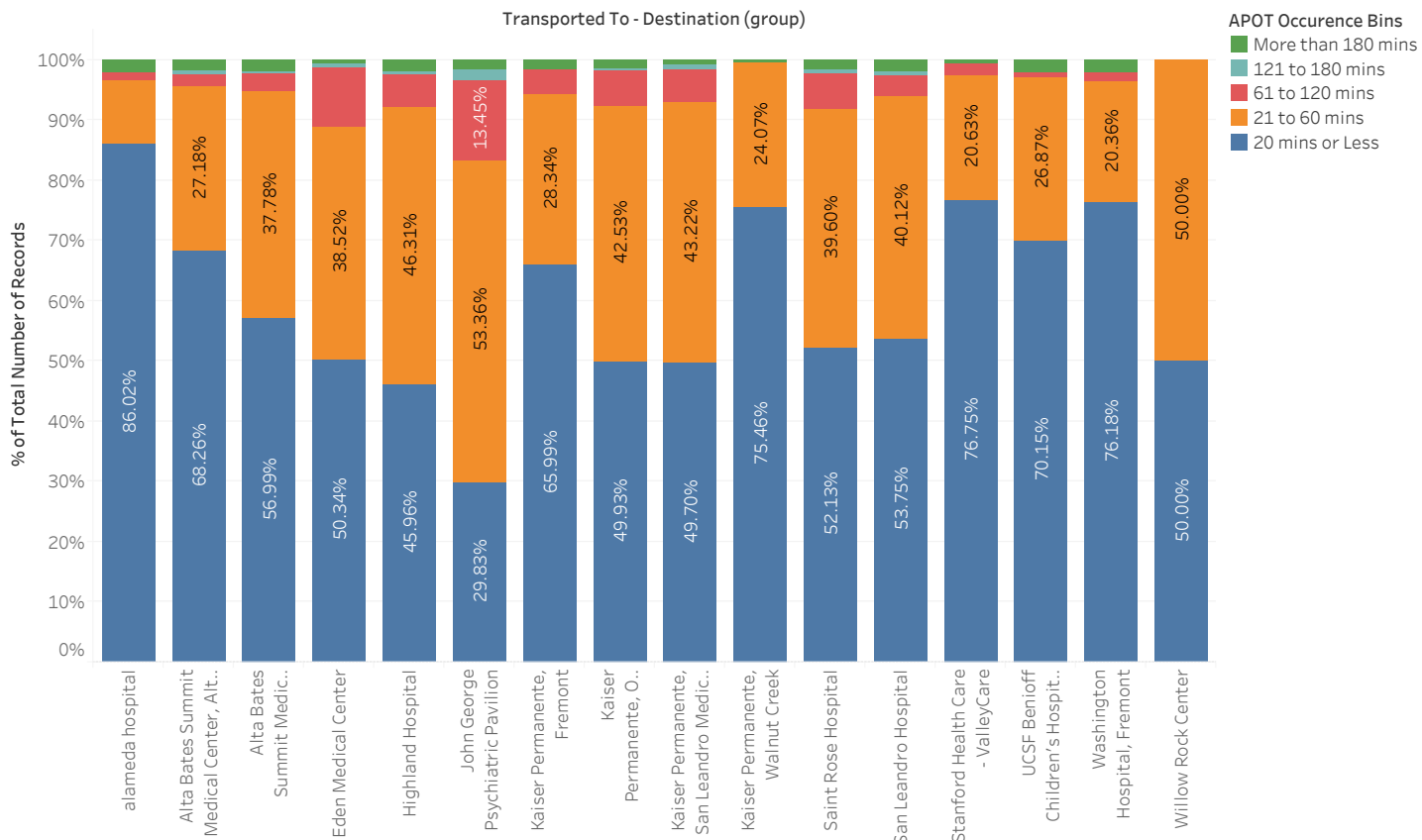
## Summary - November 2021

Transported To - Destination (group)	Avg. TOC	Percentile (90) of T..	APOD > 60 min	APOD % of N	
alameda hospital	26.5	26.6	8	3%	236
Alta Bates Summit Medical Center, Alta Bates C..	41.7	45.0	22	5%	482
Alta Bates Summit Medical Center, Summit Ca..	45.9	49.0	58	5%	1,109
Eden Medical Center	34.9	64.0	98	11%	880
Highland Hospital	49.4	56.0	88	8%	1,138
John George Psychiatric Pavilion	60.2	73.0	40	17%	238
Kaiser Permanente, Fremont	41.3	42.4	25	6%	441
Kaiser Permanente, Oakland Medical Center	40.2	52.9	53	8%	703
Kaiser Permanente, San Leandro Medical Center	37.5	53.0	47	7%	664
Kaiser Permanente, Walnut Creek	23.3	29.0	1	0%	216
Saint Rose Hospital	43.0	55.0	33	8%	399
San Leandro Hospital	50.6	49.0	31	6%	506
Stanford Health Care - ValleyCare	24.7	31.5	15	3%	572
UCSF Benioff Children's Hospital Oakland	48.0	33.4	4	3%	134
Washington Hospital, Fremont	39.2	32.0	27	3%	781
Willow Rock Center	26.8	43.5	0	0%	6
<b>Grand Total</b>					<b>8,505</b>

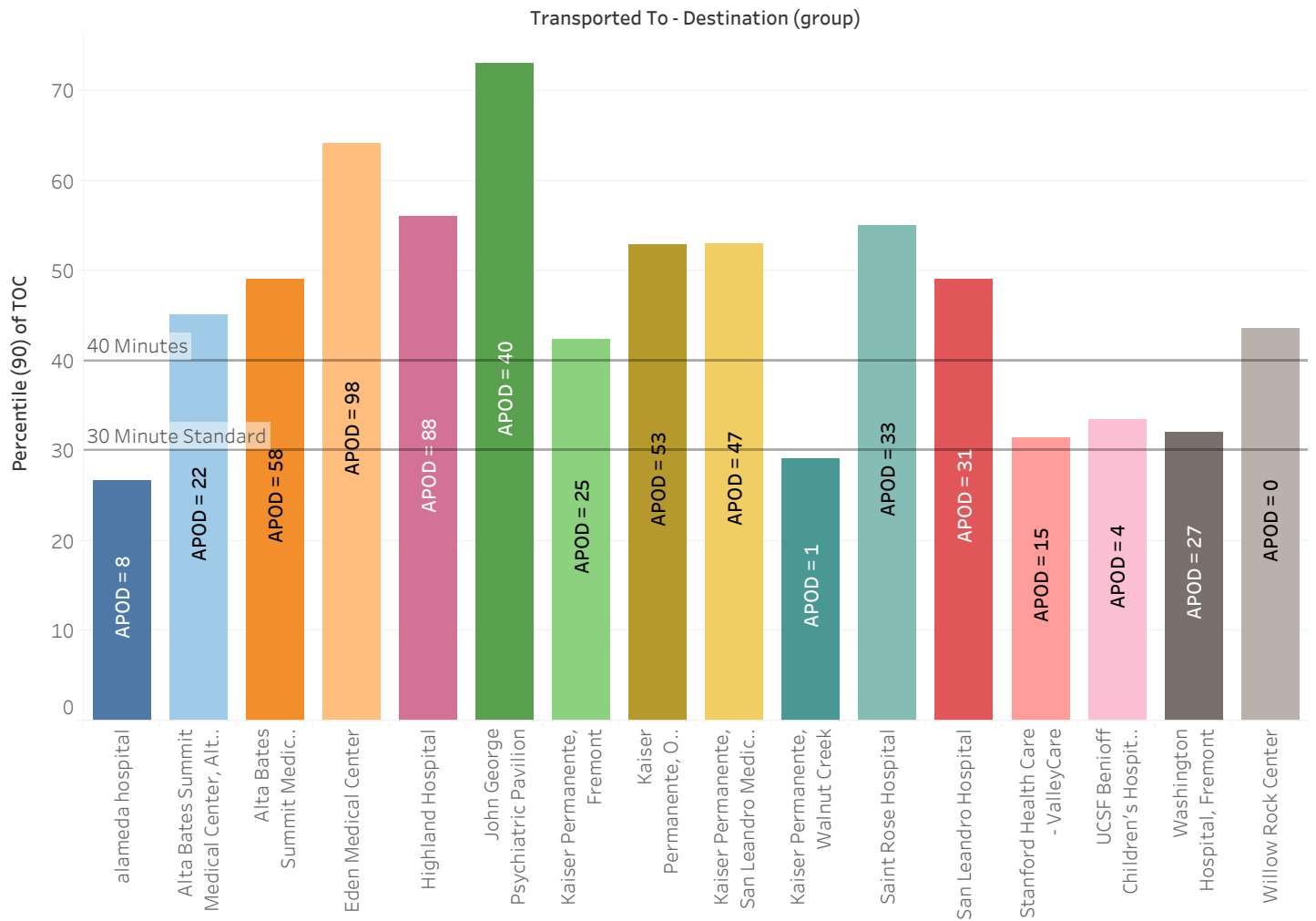
# APOT Bins

Transported To - Destination (group)	APOT Occurrence Bins					Grand Total
	20 mins or Less	21 to 60 mins	61 to 120 mins	121 to 180 mins	More than 180 mins	
alameda hospital	203 86.02%	25 10.59%	3 1.27%		5 2.12%	236 100.00%
Alta Bates Summit Medical Center, Alta..	329 68.26%	131 27.18%	11 2.28%	2 0.41%	9 1.87%	482 100.00%
Alta Bates Summit Medical Center, Sum..	632 56.99%	419 37.78%	33 2.98%	3 0.27%	22 1.98%	1,109 100.00%
Eden Medical Center	443 50.34%	339 38.52%	88 10.00%	4 0.45%	6 0.68%	880 100.00%
Highland Hospital	523 45.96%	527 46.31%	61 5.36%	5 0.44%	22 1.93%	1,138 100.00%
John George Psychiatric Pavilion	71 29.83%	127 53.36%	32 13.45%	4 1.68%	4 1.68%	238 100.00%
Kaiser Permanente, Fremont	291 65.99%	125 28.34%	18 4.08%		7 1.59%	441 100.00%
Kaiser Permanente, Oakland Medical Ce..	351 49.93%	299 42.53%	40 5.69%	3 0.43%	10 1.42%	703 100.00%
Kaiser Permanente, San Leandro Medical..	330 49.70%	287 43.22%	36 5.42%	5 0.75%	6 0.90%	664 100.00%
Kaiser Permanente, Walnut Creek	163 75.46%	52 24.07%			1 0.46%	216 100.00%
Saint Rose Hospital	208 52.13%	158 39.60%	24 6.02%	3 0.75%	6 1.50%	399 100.00%
San Leandro Hospital	272 53.75%	203 40.12%	18 3.56%	3 0.59%	10 1.98%	506 100.00%
Stanford Health Care - ValleyCare	439 76.75%	118 20.63%	11 1.92%		4 0.70%	572 100.00%
UCSF Benioff Children's Hospital ..	94 70.15%	36 26.87%	1 0.75%		3 2.24%	134 100.00%
Washington Hospital, Fremont	595 76.18%	159 20.36%	10 1.28%		17 2.18%	781 100.00%
Willow Rock Center	3 50.00%	3 50.00%				6 100.00%
<b>Grand Total</b>	<b>4,947 58.17%</b>	<b>3,008 35.37%</b>	<b>386 4.54%</b>	<b>32 0.38%</b>	<b>132 1.55%</b>	<b>8,505 100.00%</b>

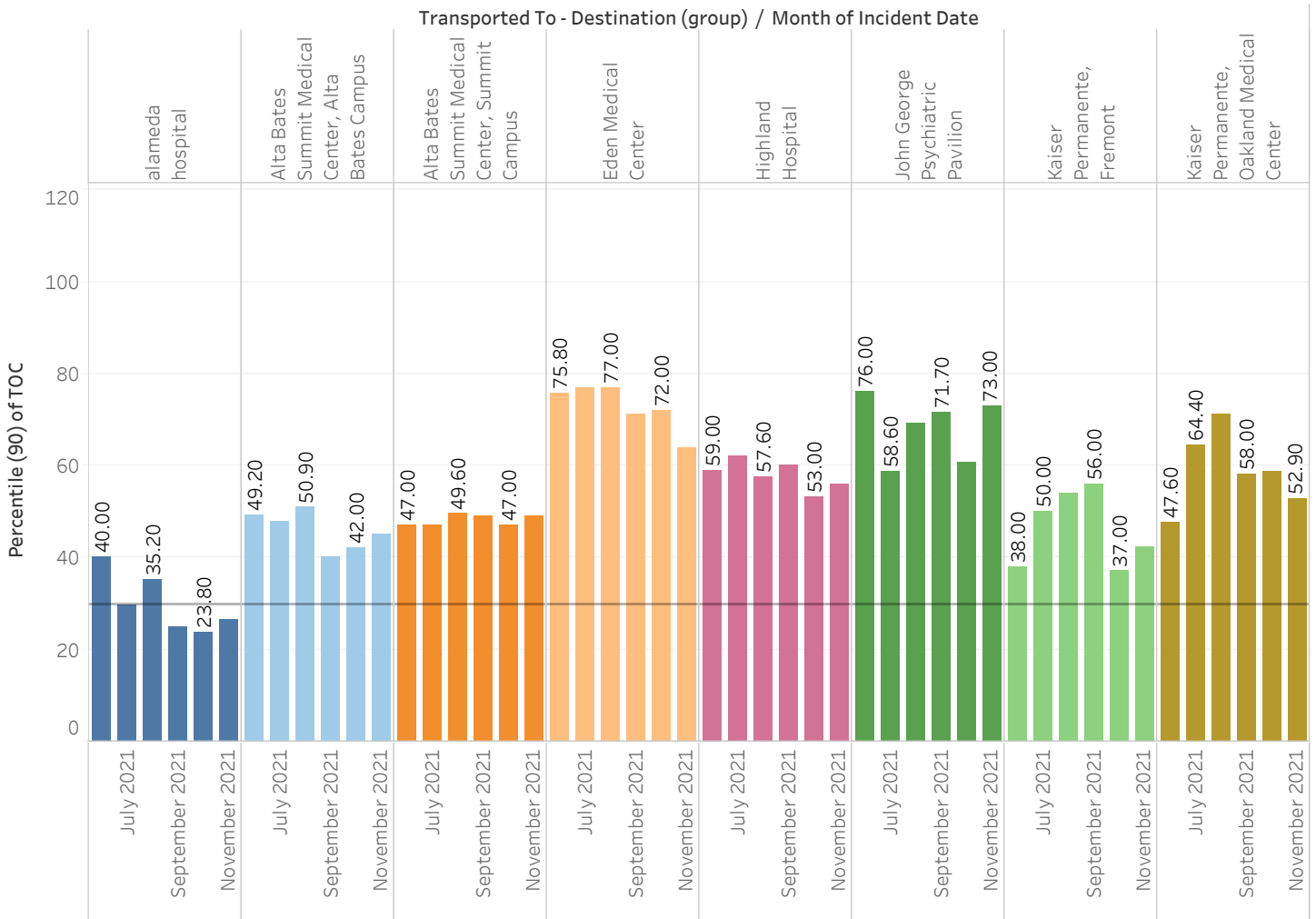
# APOT Bins Graph



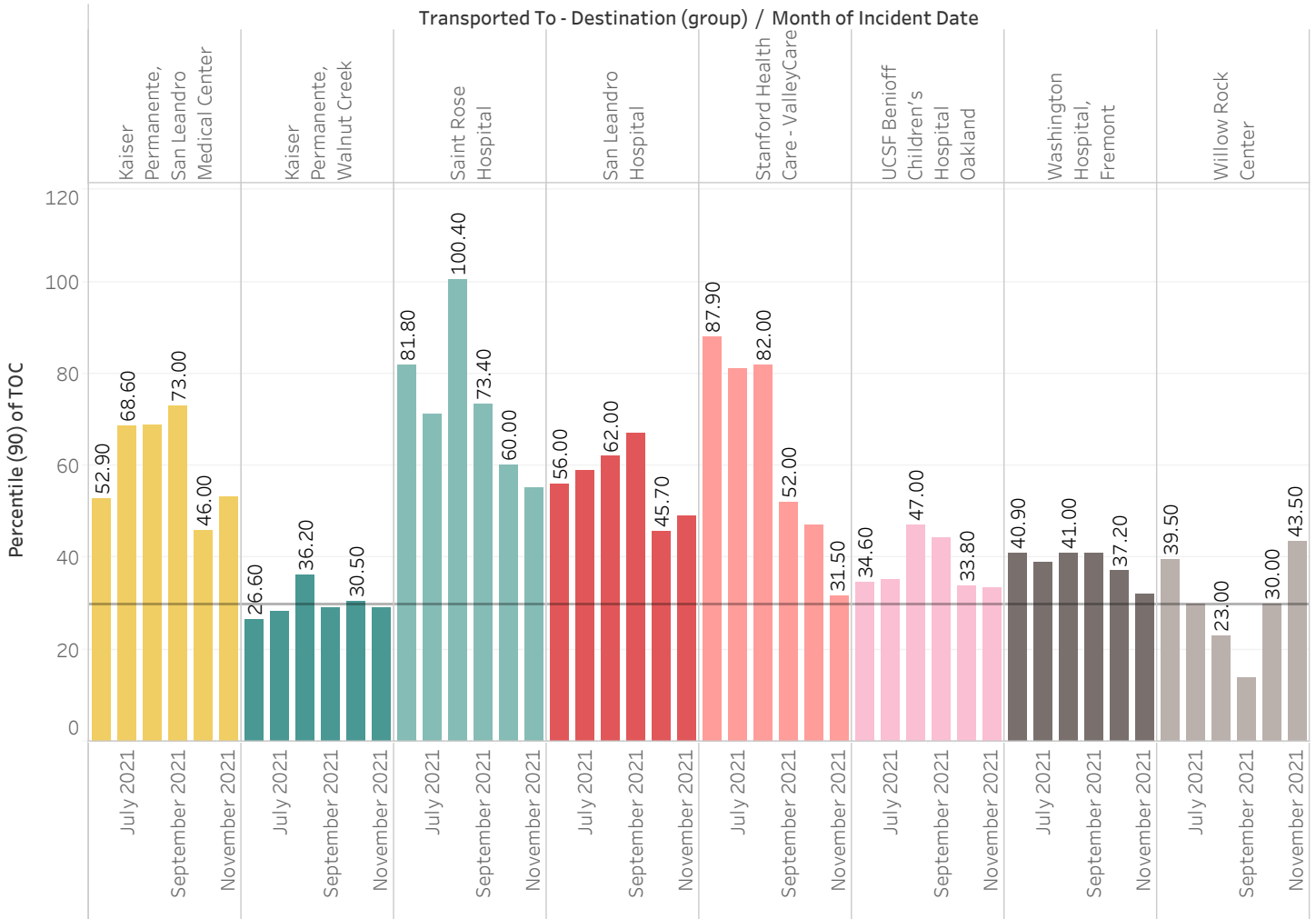
# Current Month 90% APOT



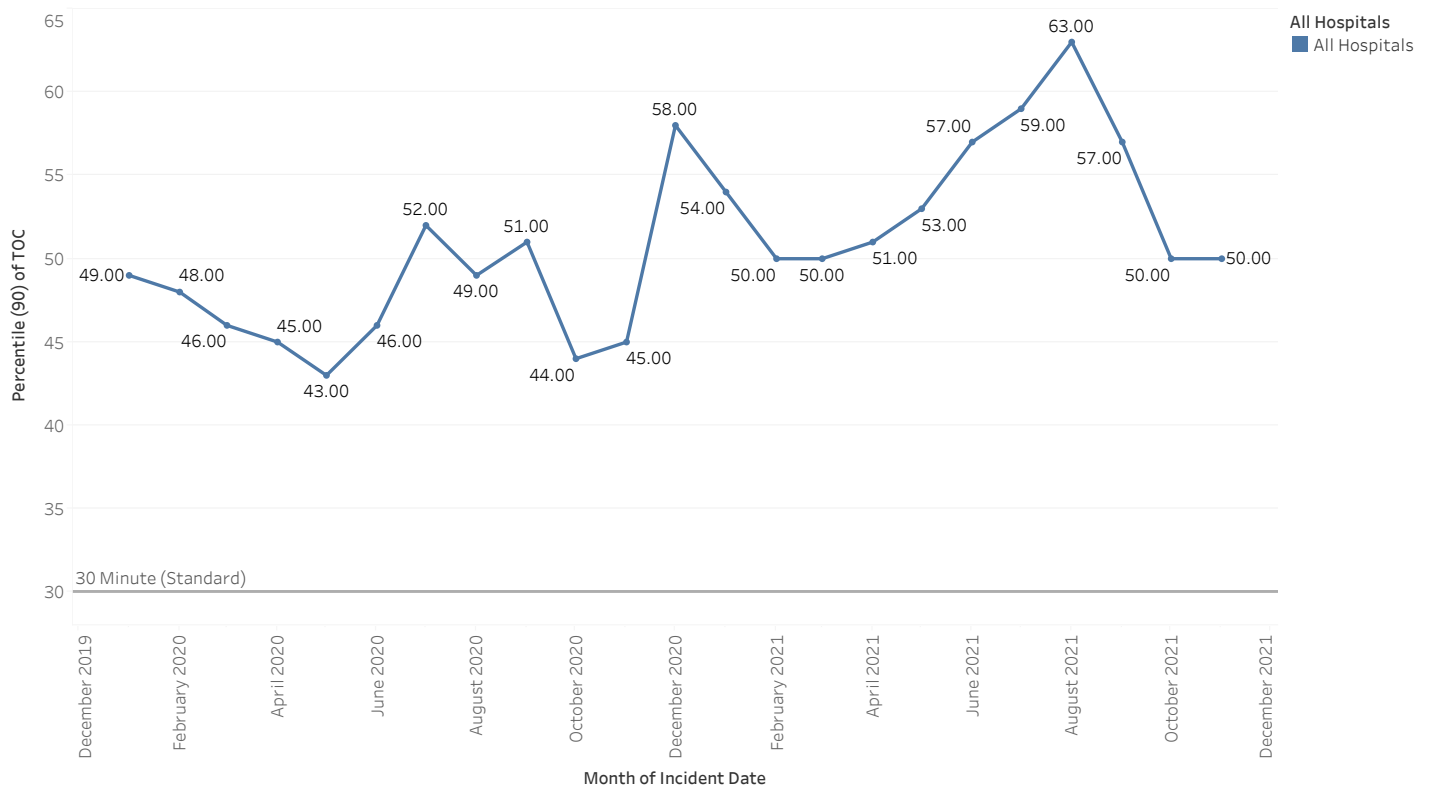
# Prev Month 90% APOT



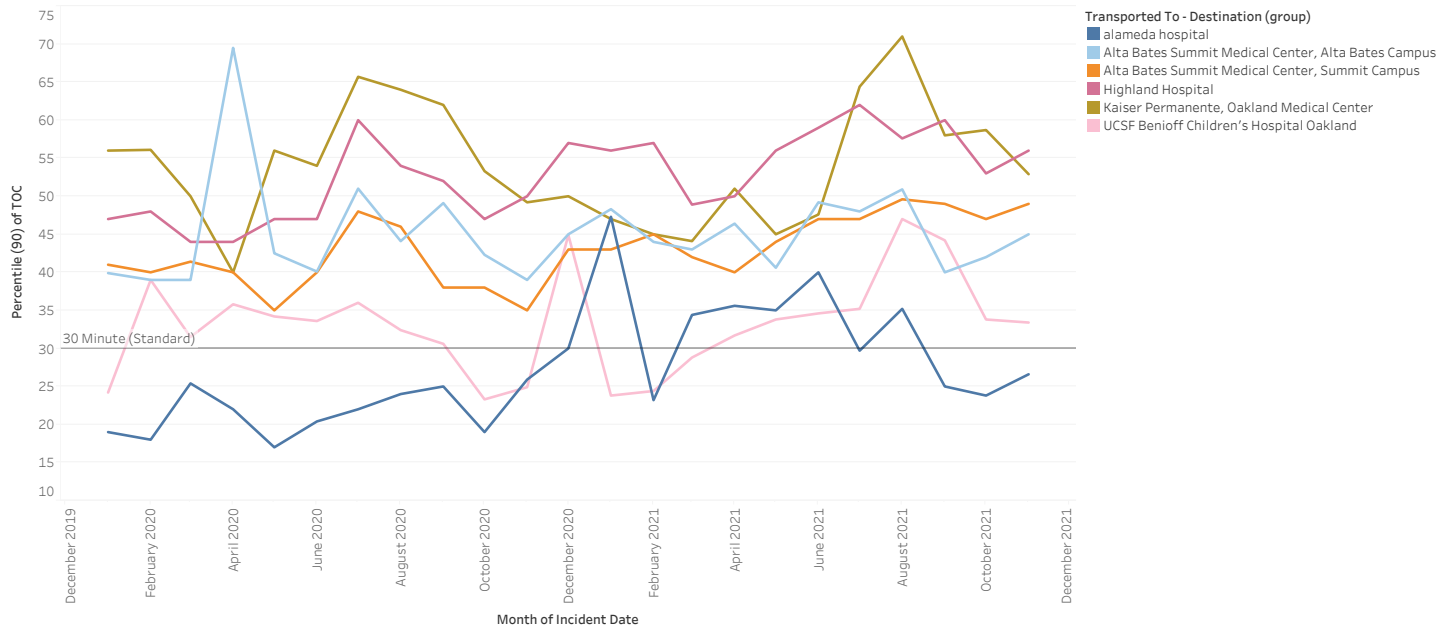
# Prev Month 90% APOT



# All Hospital 90% APOT

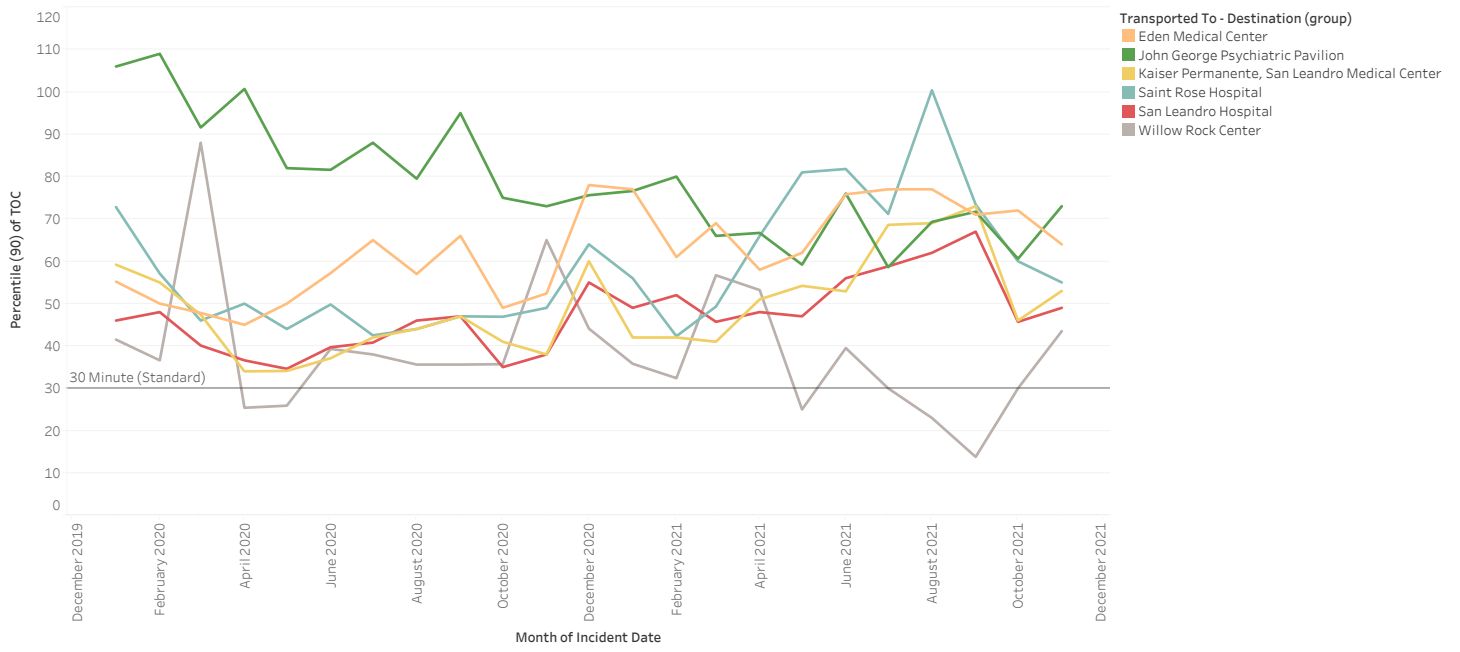


# North 90% APOT





# Mid 90% APOT



### South and East 90% APOT

