

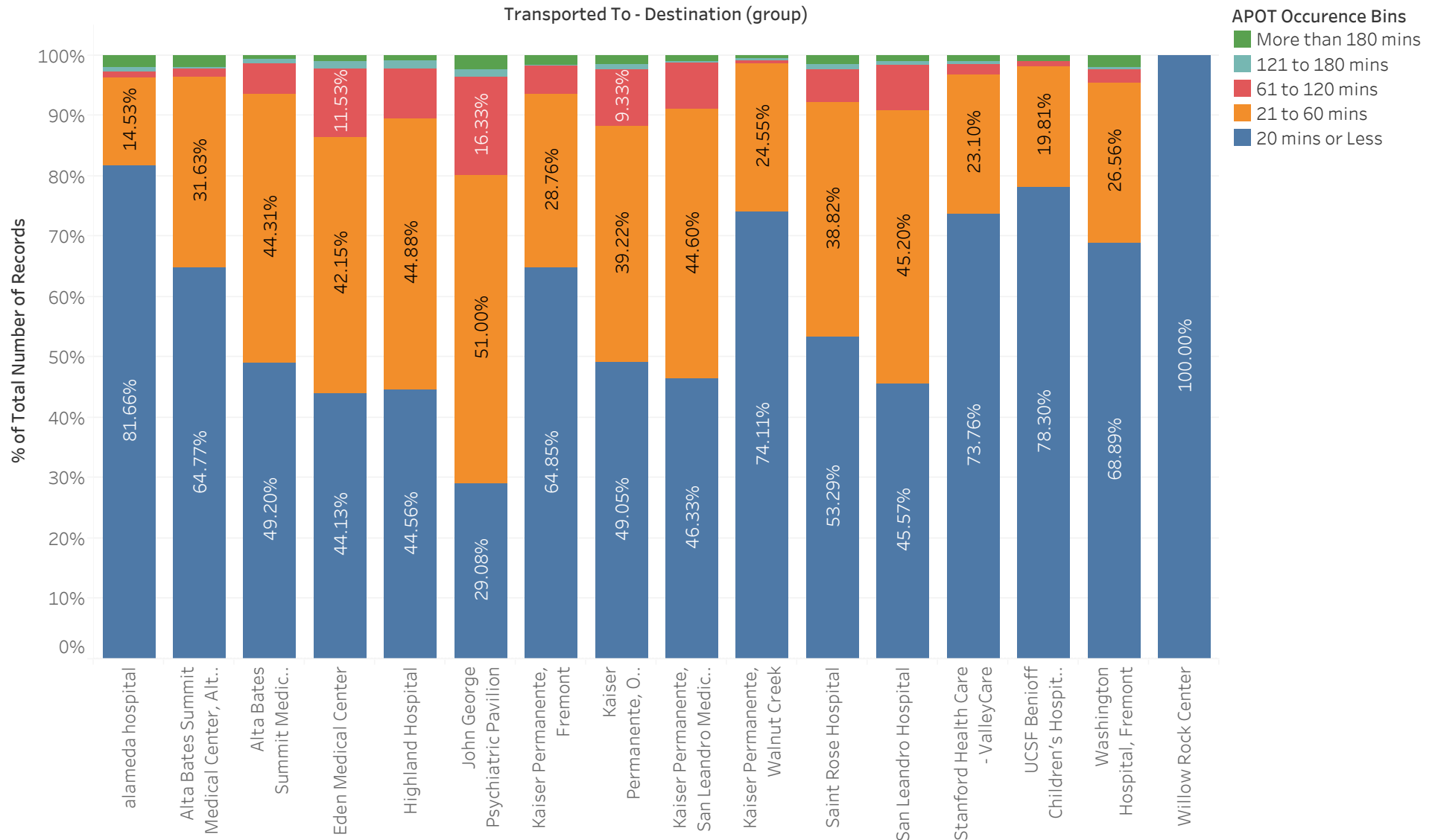
Summary - December 2021

Transported To - Destination (group)	Avg. TOC	Percentile (90) of T..	APOD > 60 min	APOD % of N	
alameda hospital	28.7	28.0	11	4%	289
Alta Bates Summit Medical Center, Alta Bates C..	43.7	41.0	19	4%	528
Alta Bates Summit Medical Center, Summit Ca..	33.2	51.0	77	6%	1,187
Eden Medical Center	44.2	69.0	125	14%	911
Highland Hospital	40.2	61.7	131	11%	1,241
John George Psychiatric Pavilion	60.1	76.2	50	20%	251
Kaiser Permanente, Fremont	36.3	44.0	34	6%	532
Kaiser Permanente, Oakland Medical Center	43.1	65.0	93	12%	793
Kaiser Permanente, San Leandro Medical Center	37.8	57.8	63	9%	695
Kaiser Permanente, Walnut Creek	18.8	28.0	3	1%	224
Saint Rose Hospital	42.0	57.0	36	8%	456
San Leandro Hospital	41.9	59.3	49	9%	531
Stanford Health Care - ValleyCare	28.1	34.0	19	3%	606
UCSF Benioff Children's Hospital Oakland	29.3	33.0	2	2%	106
Washington Hospital, Fremont	44.8	41.0	41	5%	900
Willow Rock Center	14.8	16.4	0	0%	4
Grand Total					9,254

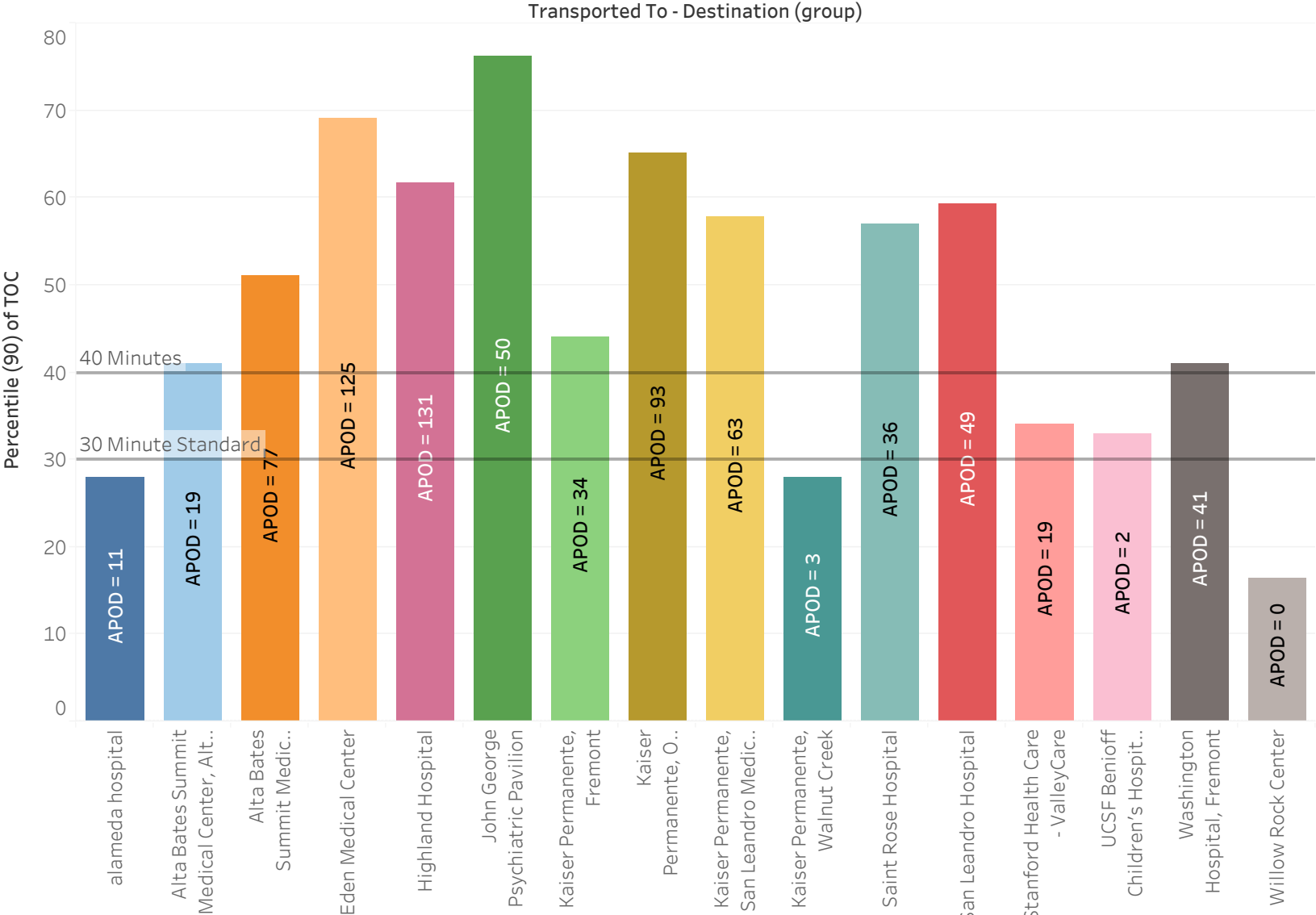
APOT Bins

Transported To - Destination (group)	APOT Occurrence Bins					Grand Total
	20 mins or Less	21 to 60 mins	61 to 120 mins	121 to 180 mins	More than 180 mins	
alameda hospital	236 81.66%	42 14.53%	3 1.04%	2 0.69%	6 2.08%	289 100.00%
Alta Bates Summit Medical Center, Alta..	342 64.77%	167 31.63%	7 1.33%	2 0.38%	10 1.89%	528 100.00%
Alta Bates Summit Medical Center, Sum..	584 49.20%	526 44.31%	61 5.14%	9 0.76%	7 0.59%	1,187 100.00%
Eden Medical Center	402 44.13%	384 42.15%	105 11.53%	10 1.10%	10 1.10%	911 100.00%
Highland Hospital	553 44.56%	557 44.88%	105 8.46%	15 1.21%	11 0.89%	1,241 100.00%
John George Psychiatric Pavilion	73 29.08%	128 51.00%	41 16.33%	3 1.20%	6 2.39%	251 100.00%
Kaiser Permanente, Fremont	345 64.85%	153 28.76%	24 4.51%	2 0.38%	8 1.50%	532 100.00%
Kaiser Permanente, Oakland Medical Ce..	389 49.05%	311 39.22%	74 9.33%	8 1.01%	11 1.39%	793 100.00%
Kaiser Permanente, San Leandro Medical..	322 46.33%	310 44.60%	54 7.77%	2 0.29%	7 1.01%	695 100.00%
Kaiser Permanente, Walnut Creek	166 74.11%	55 24.55%	1 0.45%	1 0.45%	1 0.45%	224 100.00%
Saint Rose Hospital	243 53.29%	177 38.82%	25 5.48%	5 1.10%	6 1.32%	456 100.00%
San Leandro Hospital	242 45.57%	240 45.20%	41 7.72%	3 0.56%	5 0.94%	531 100.00%
Stanford Health Care - ValleyCare	447 73.76%	140 23.10%	10 1.65%	3 0.50%	6 0.99%	606 100.00%
UCSF Benioff Children's Hospital ..	83 78.30%	21 19.81%	1 0.94%		1 0.94%	106 100.00%
Washington Hospital, Fremont	620 68.89%	239 26.56%	20 2.22%	3 0.33%	18 2.00%	900 100.00%
Willow Rock Center	4 100.00%					4 100.00%
Grand Total	5,051 54.58%	3,450 37.28%	572 6.18%	68 0.73%	113 1.22%	9,254 100.00%

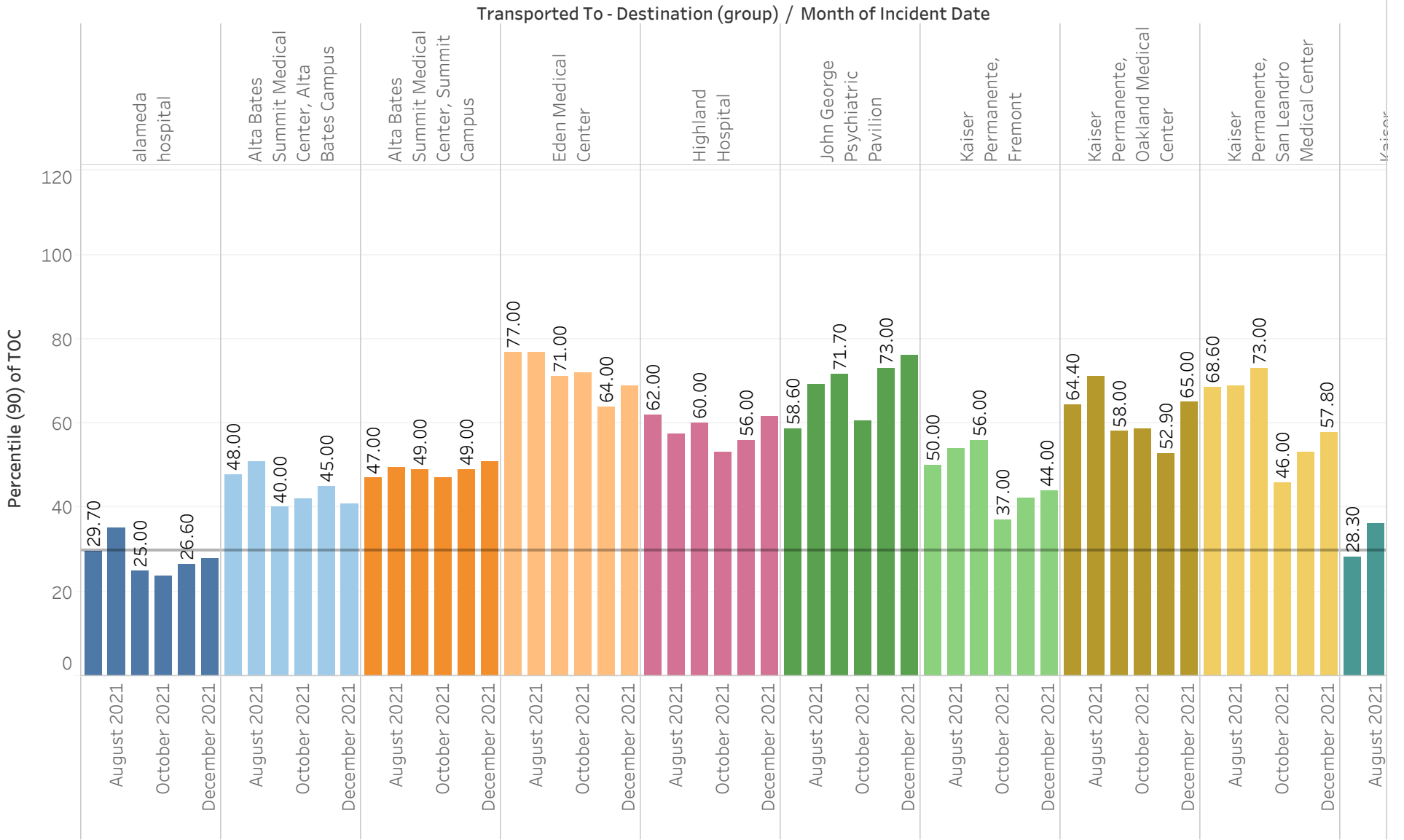
APOT Bins Graph



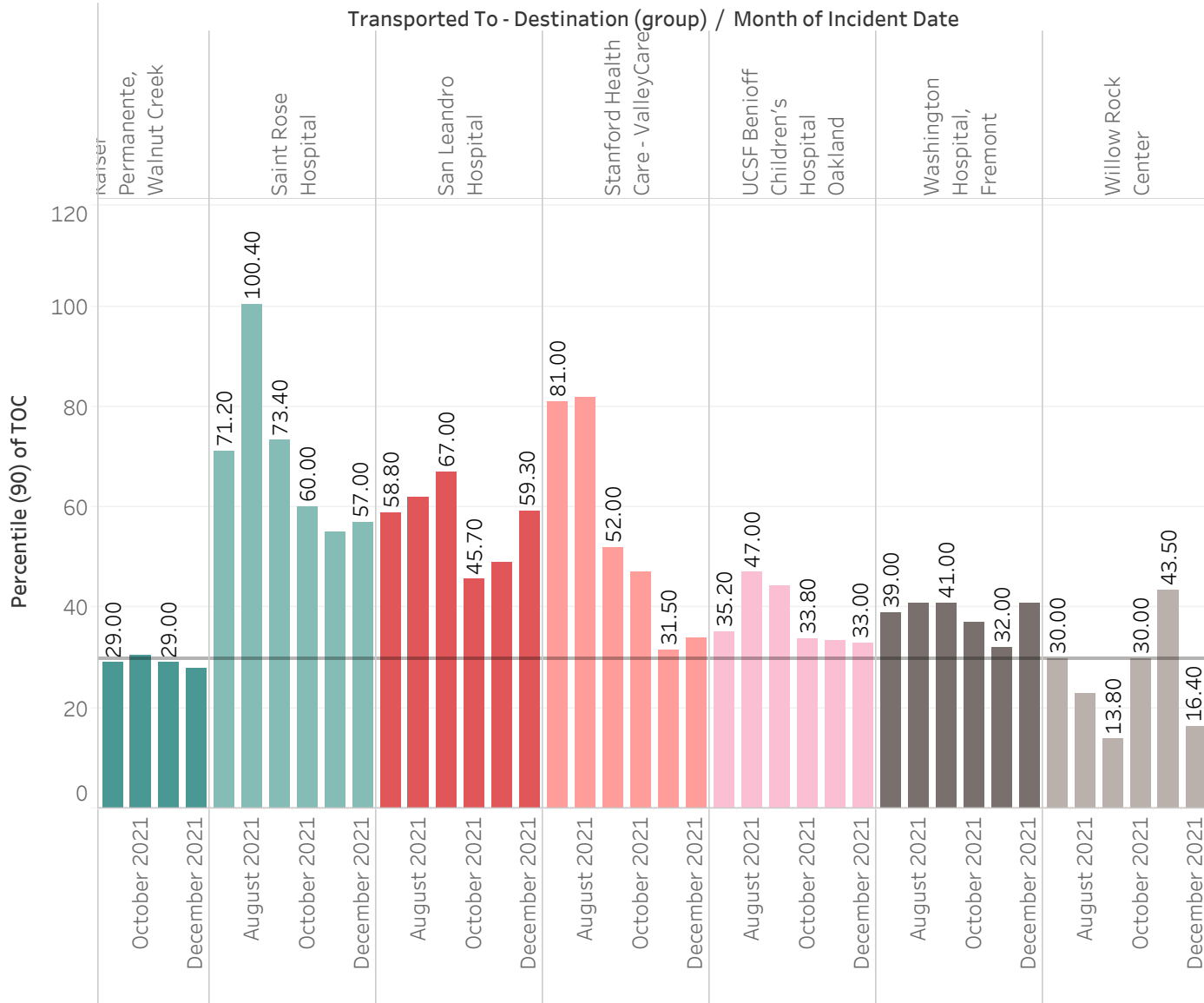
Current Month 90% APOT



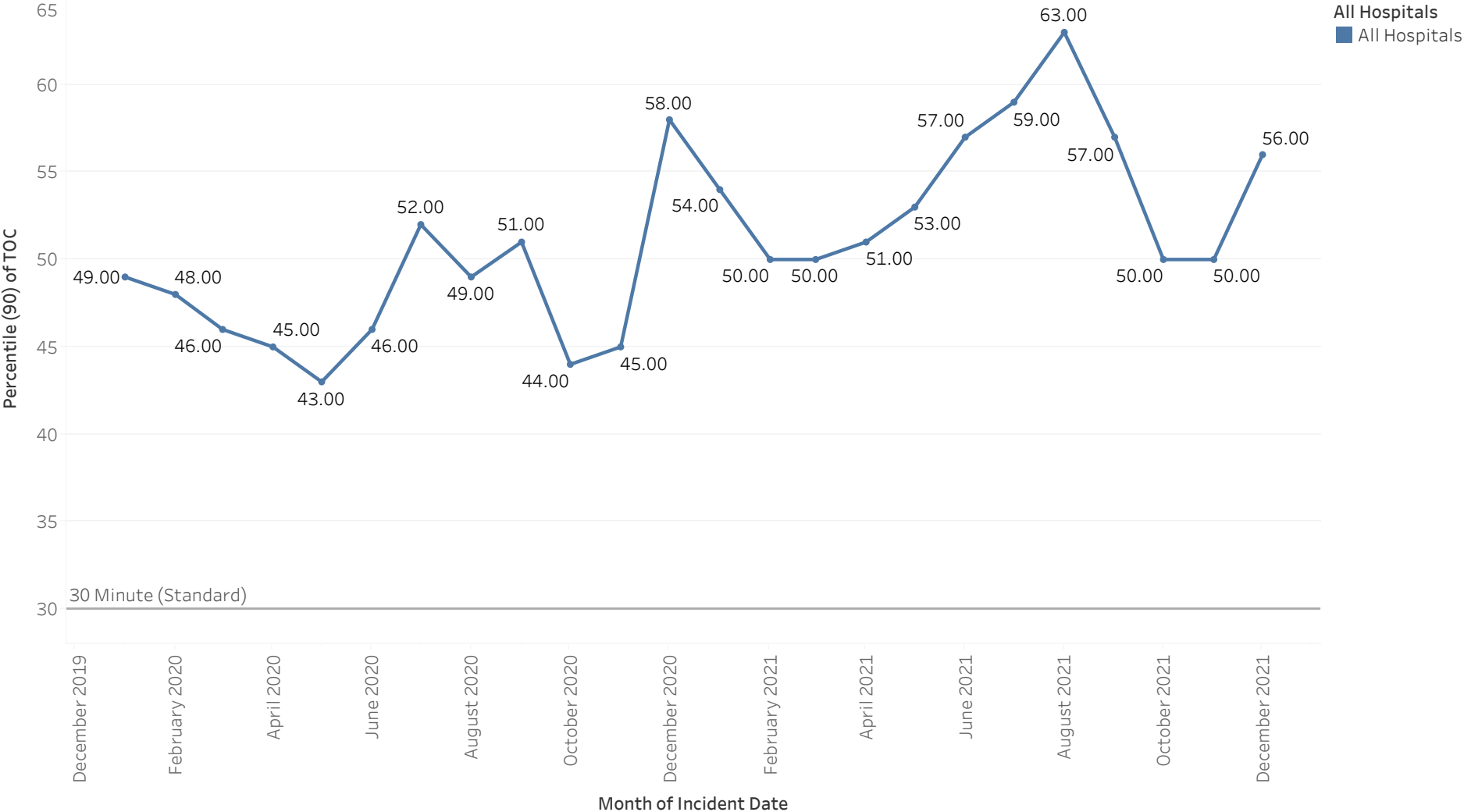
Prev Month 90% APOT



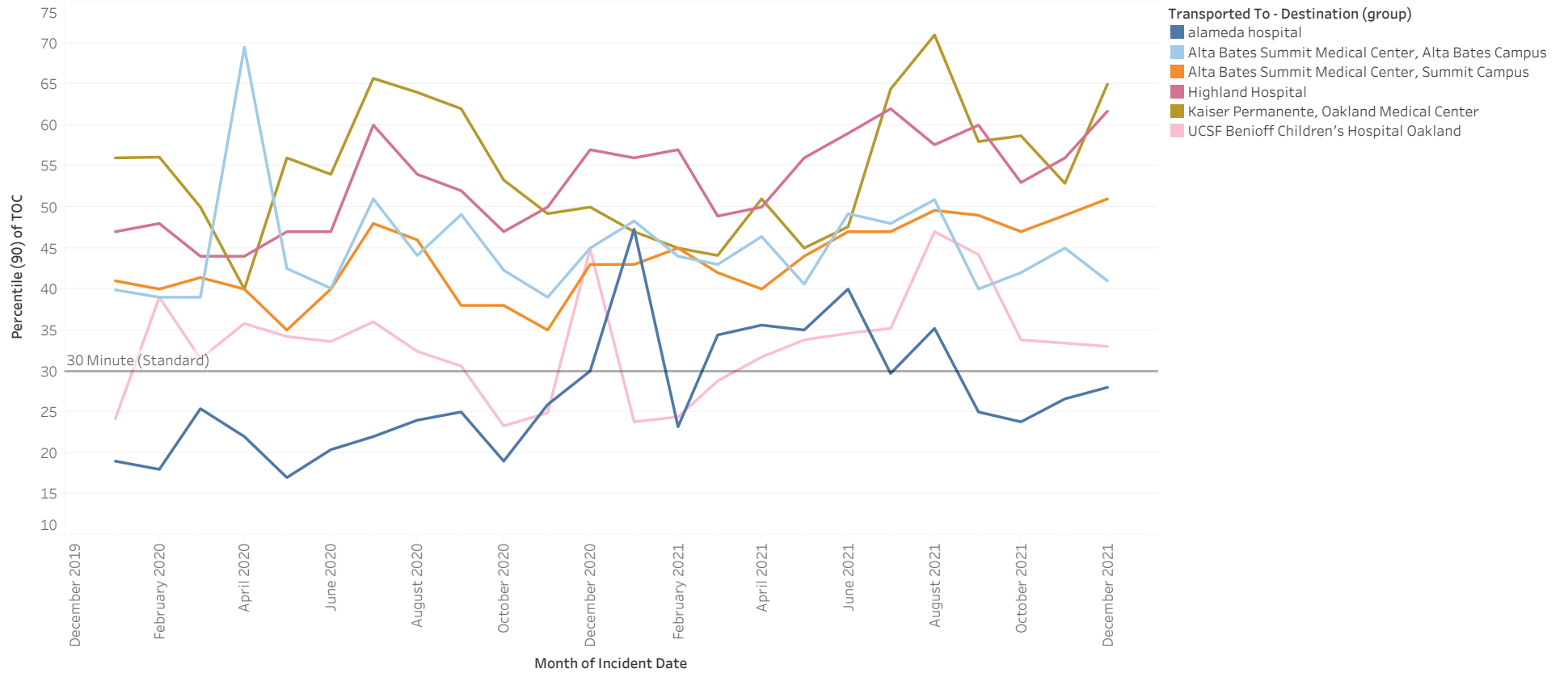
Prev Month 90% APOT



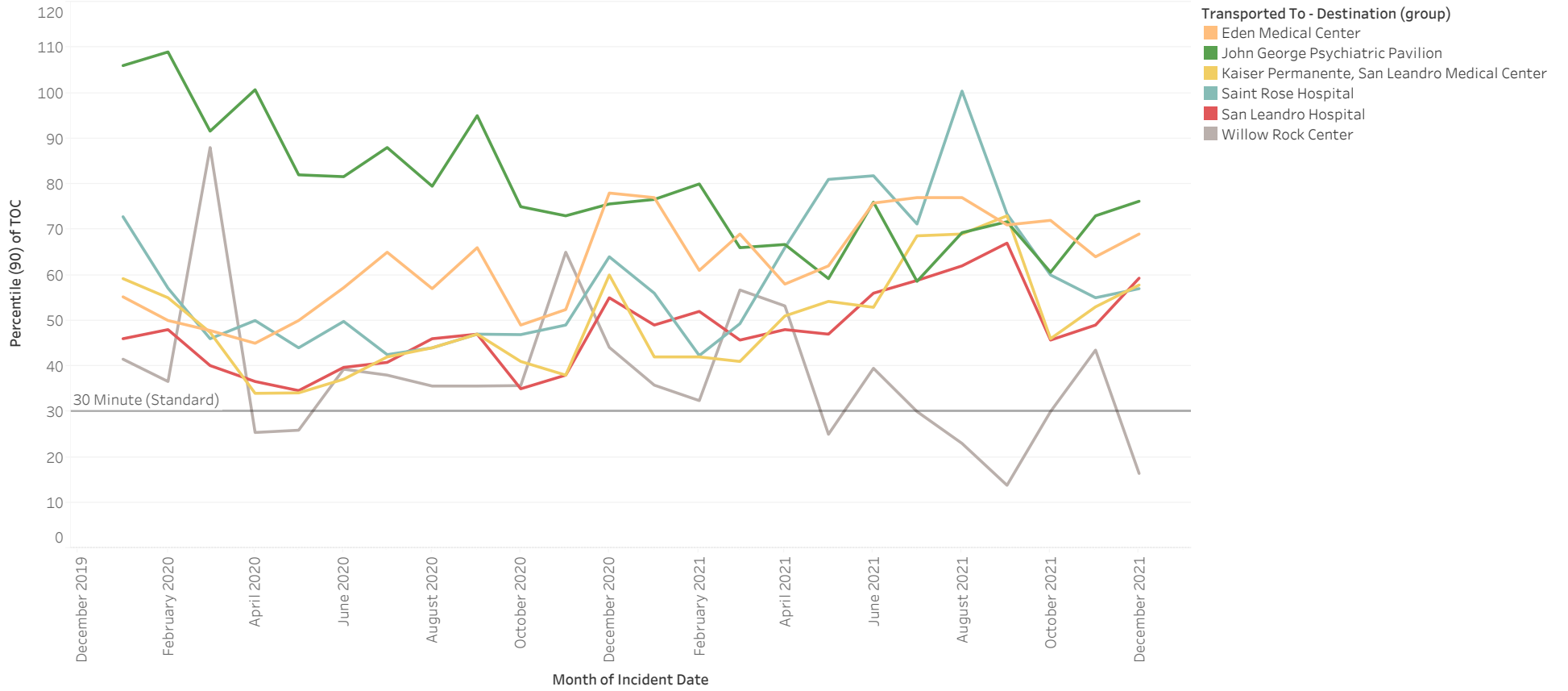
All Hospital 90% APOT



North 90% APOT



Mid 90% APOT



South and East 90% APOT

