

ALCO APOT Report

April 2025



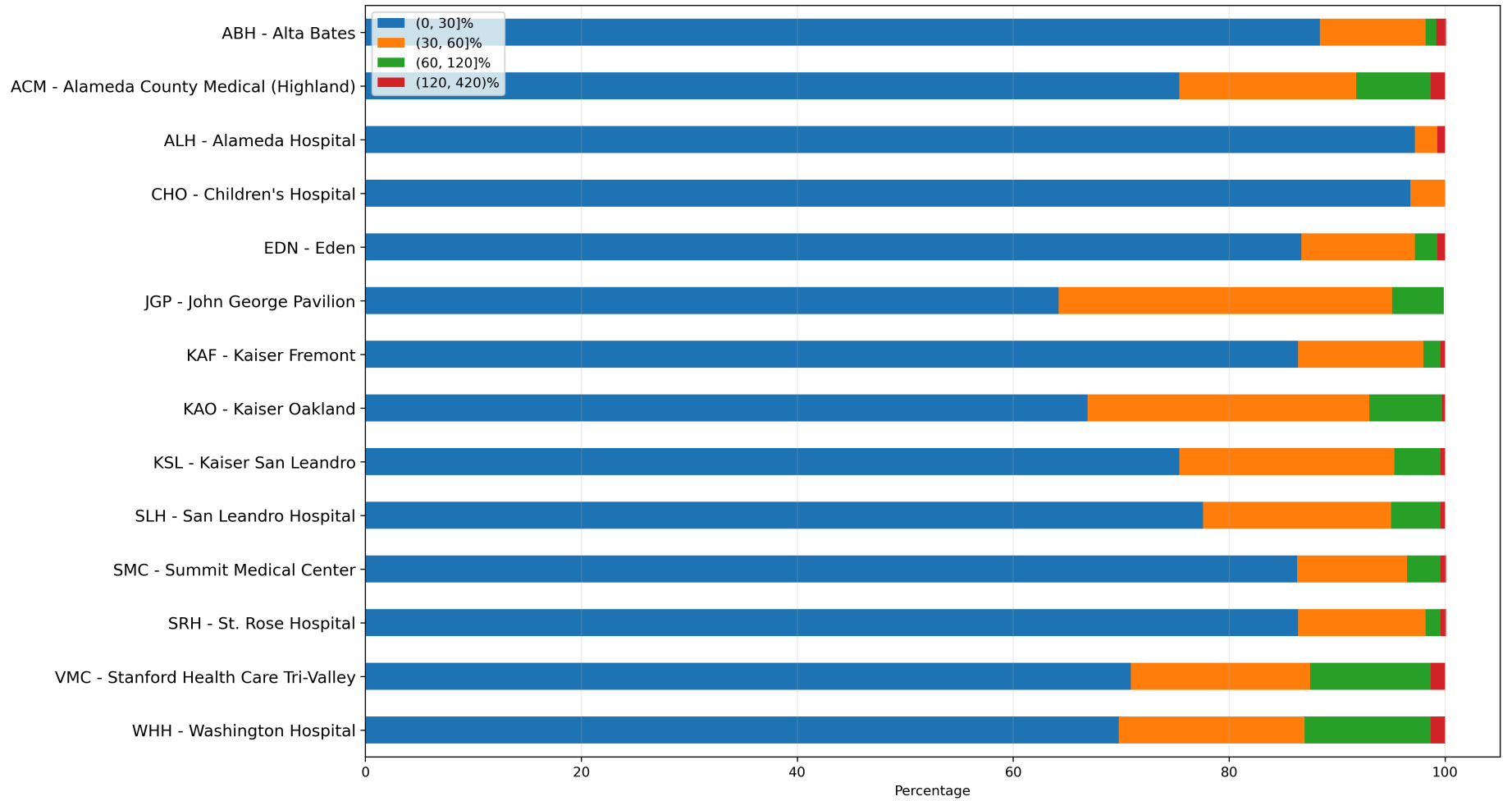
1 - Destinations APOT Statistics

	Transports	Median	Average	90th Percentile	APOTs > 30 min	APOTs > 30 min %
ABH - Alta Bates	584	15.2	20.1	32.3	68	11.6%
ACM - Alameda County Medical (Highland)	1,064	17.2	25.7	55.8	262	24.6%
ALH - Alameda Hospital	288	11.1	13.7	20.2	8	2.8%
CHO - Children's Hospital	125	9.8	11.8	20.9	4	3.2%
EDN - Eden	944	14.4	19.6	34.4	126	13.3%
JGP - John George Pavilion	165	24.6	29.1	51.0	59	35.8%
KAF - Kaiser Fremont	516	15.2	19.4	34.9	70	13.6%
KAO - Kaiser Oakland	758	22.3	27.8	52.4	251	33.1%
KSL - Kaiser San Leandro	763	20.1	25.2	44.9	188	24.6%
SLH - San Leandro Hospital	500	18.1	23.8	43.7	112	22.4%
SMC - Summit Medical Center	1,289	14.0	19.3	37.5	177	13.7%
SRH - St. Rose Hospital	425	14.3	18.5	33.6	58	13.6%
VMC - Stanford Health Care Tri-Valley	704	17.1	28.2	65.7	205	29.1%
WHH - Washington Hospital	989	18.5	29.1	67.7	299	30.2%

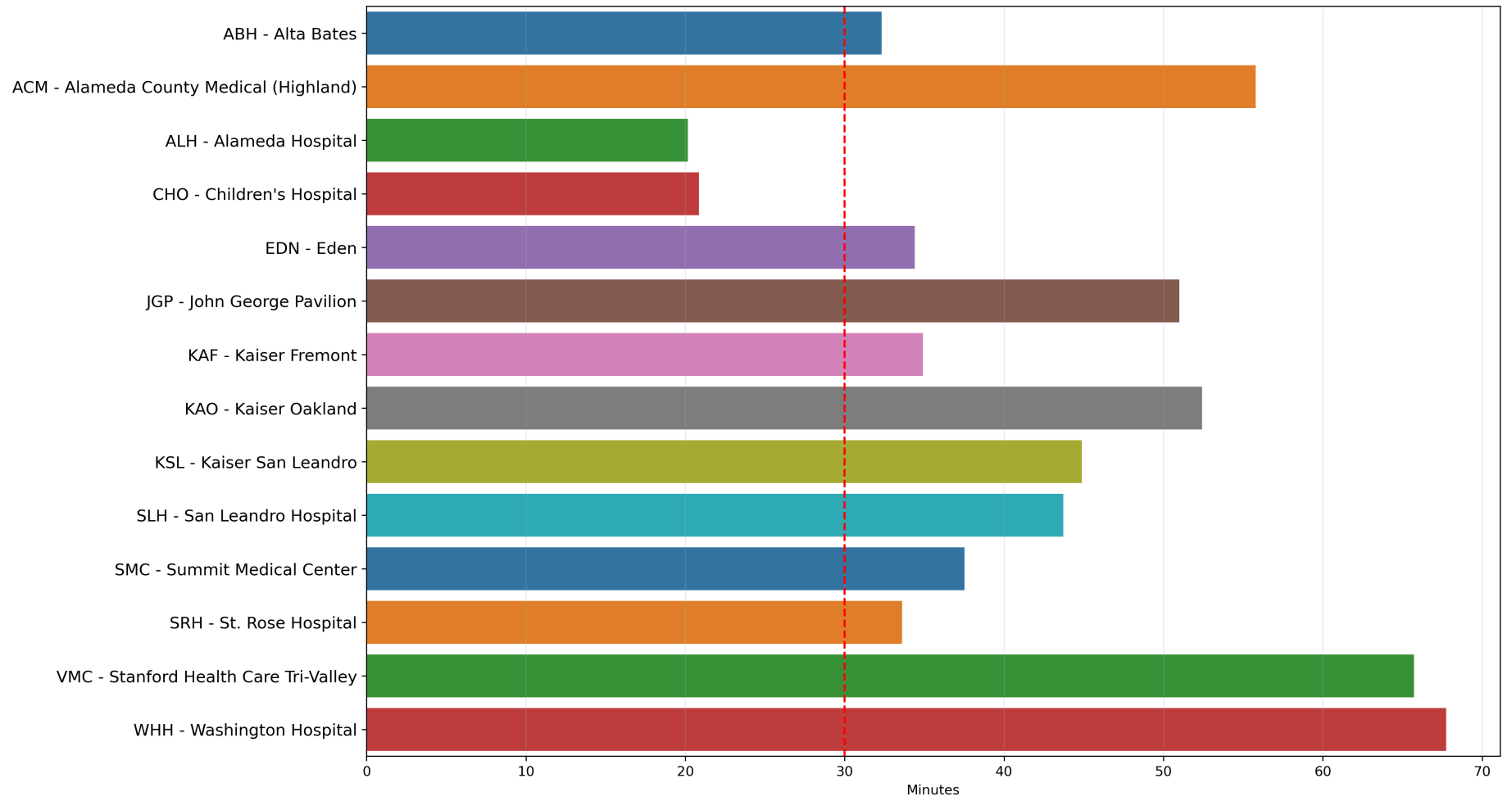
2 - Destinations APOT Bins

	Transports	(0, 30]	(0, 30]%	(30, 60]	(30, 60]%	(60, 120]	(60, 120]%	(120, 420)	(120, 420)%
ABH - Alta Bates	584	516	88.4%	57	9.8%	6	1.0%	5	0.9%
ACM - Alameda County Medical (Highland)	1,064	802	75.4%	175	16.4%	73	6.9%	14	1.3%
ALH - Alameda Hospital	288	280	97.2%	6	2.1%	0	0.0%	2	0.7%
CHO - Children's Hospital	125	121	96.8%	4	3.2%	0	0.0%	0	0.0%
EDN - Eden	944	818	86.7%	99	10.5%	20	2.1%	7	0.7%
JGP - John George Pavilion	165	106	64.2%	51	30.9%	8	4.8%	0	0.0%
KAF - Kaiser Fremont	516	446	86.4%	60	11.6%	8	1.6%	2	0.4%
KAO - Kaiser Oakland	758	507	66.9%	198	26.1%	51	6.7%	2	0.3%
KSL - Kaiser San Leandro	763	575	75.4%	152	19.9%	33	4.3%	3	0.4%
SLH - San Leandro Hospital	500	388	77.6%	87	17.4%	23	4.6%	2	0.4%
SMC - Summit Medical Center	1,289	1,112	86.3%	131	10.2%	40	3.1%	6	0.5%
SRH - St. Rose Hospital	425	367	86.4%	50	11.8%	6	1.4%	2	0.5%
VMC - Stanford Health Care Tri-Valley	704	499	70.9%	117	16.6%	79	11.2%	9	1.3%
WHH - Washington Hospital	989	690	69.8%	170	17.2%	116	11.7%	13	1.3%

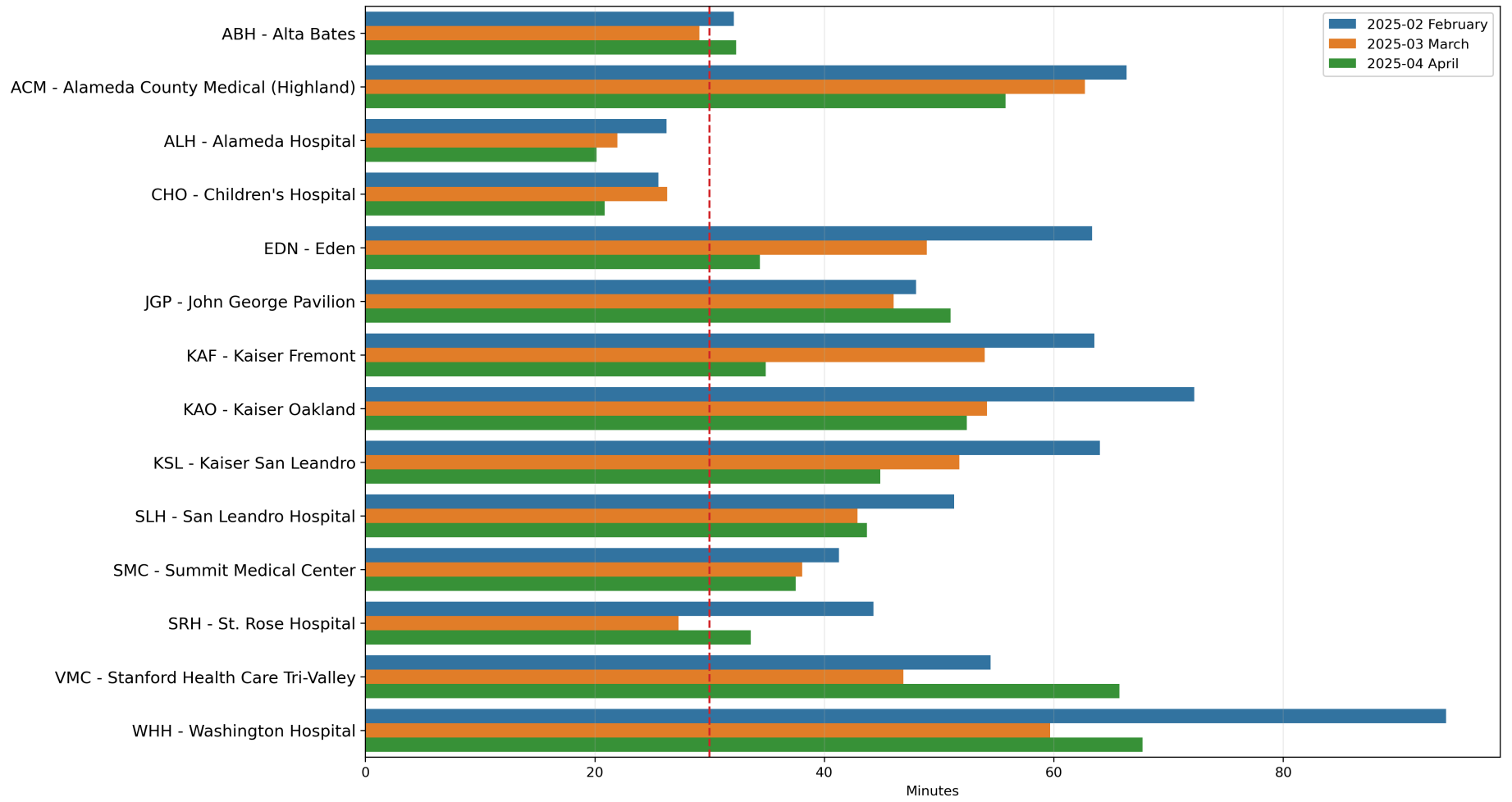
3 - Destinations APOT Stacked Bins



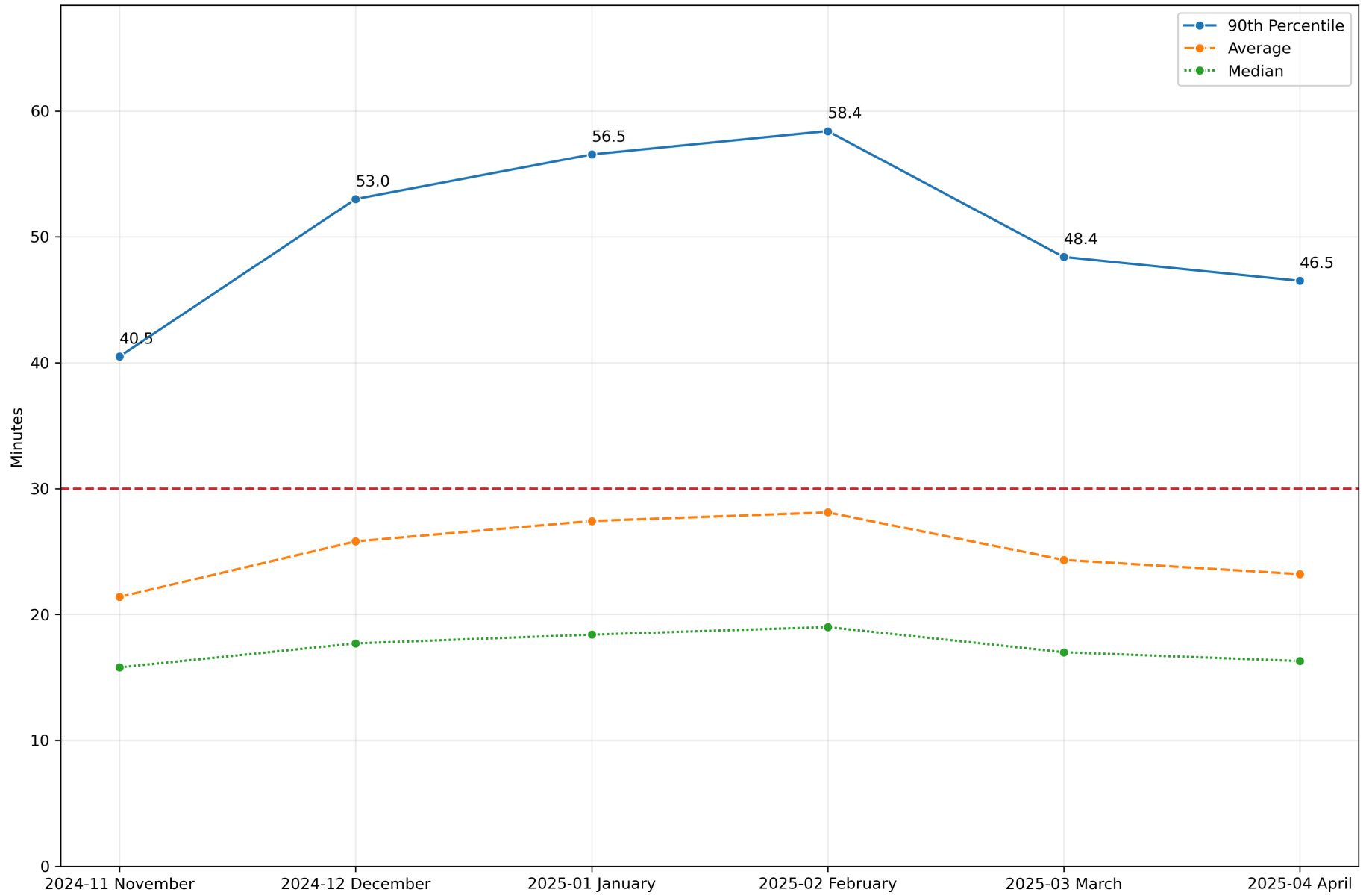
4 - April 2025 APOT by Destination 90th Percentile



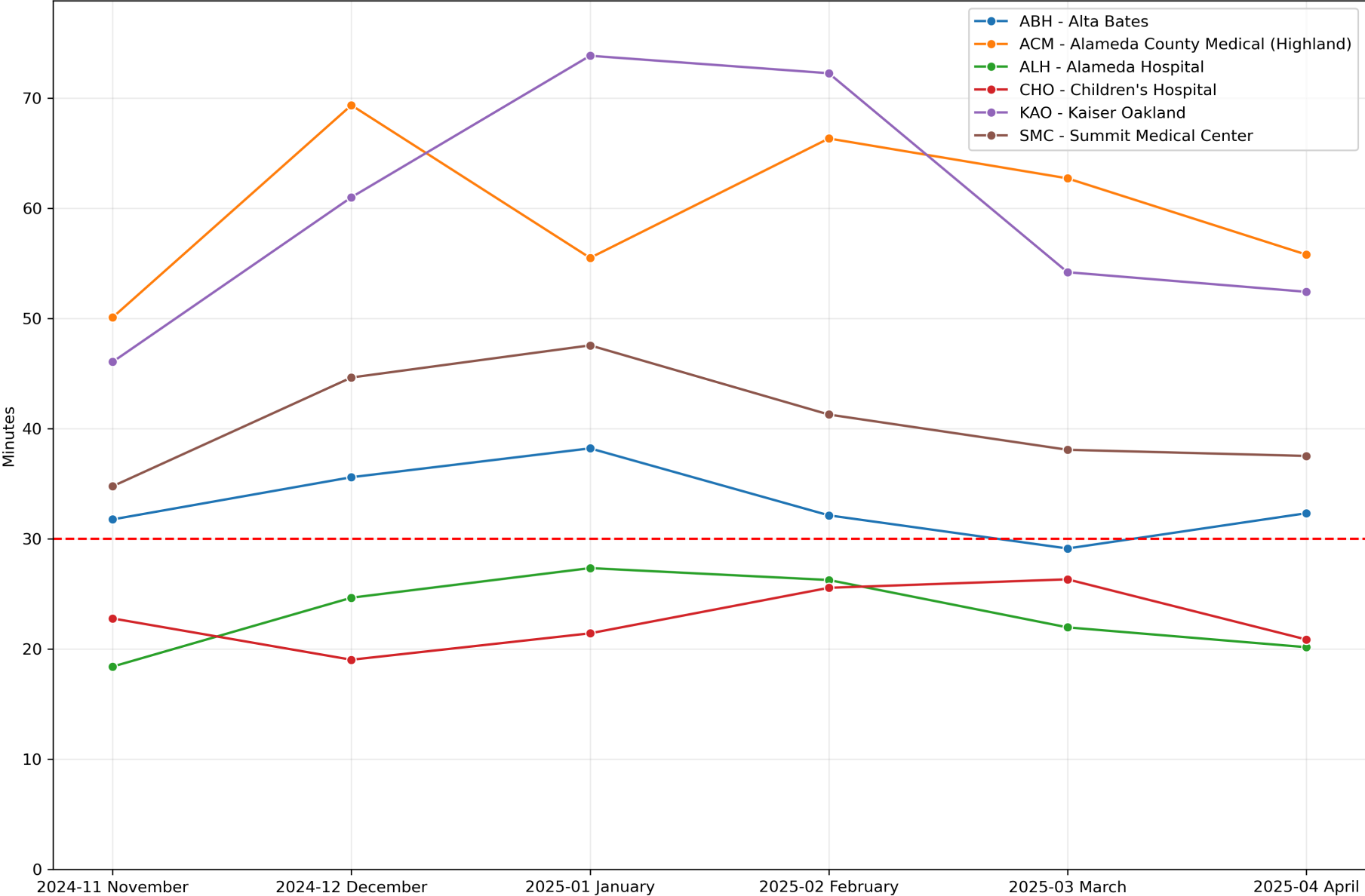
5 - APOTs by Destination 90th Percentile



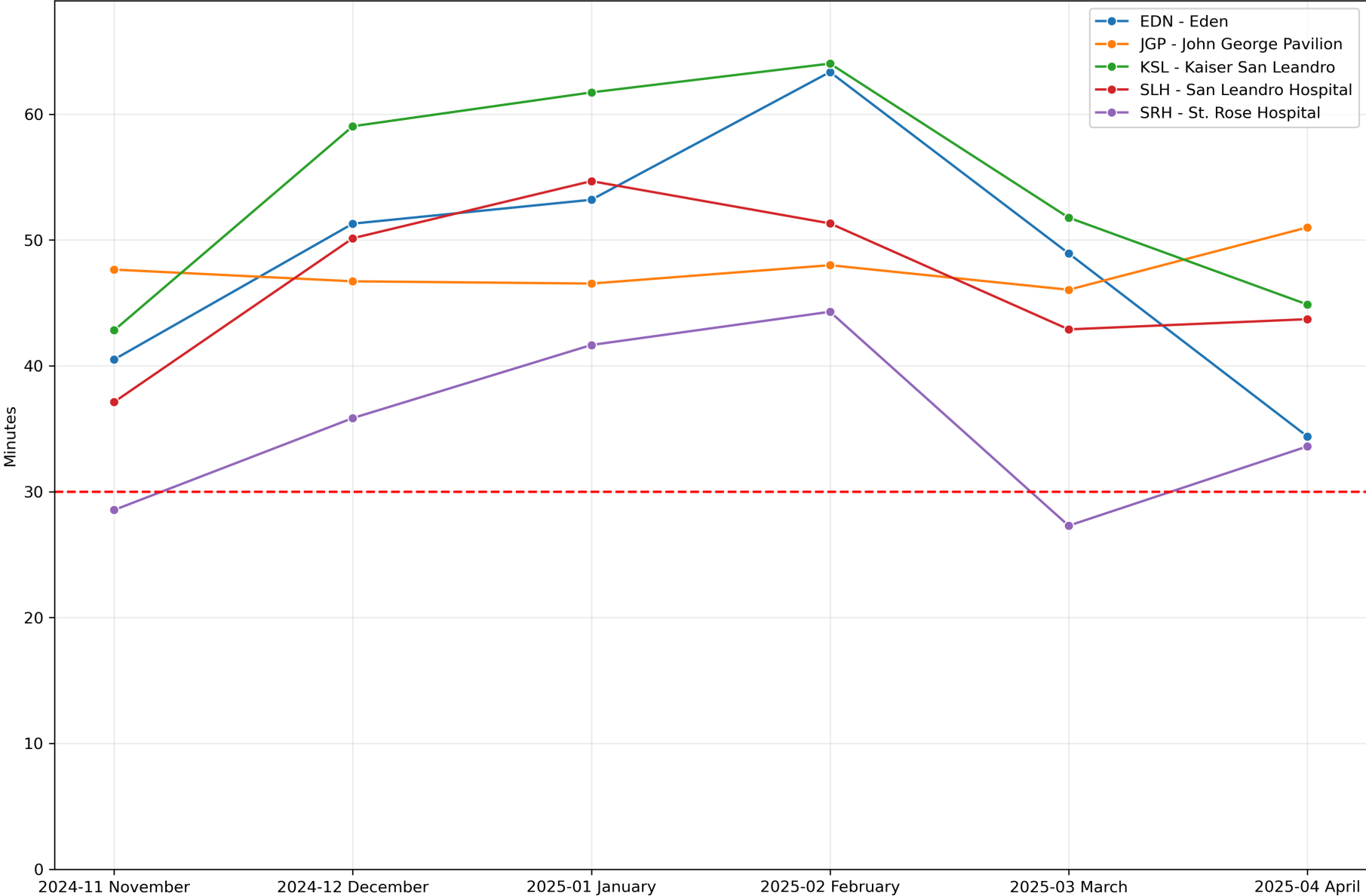
6 - Countywide APOT Statistics



7 - Northern APOTs 90th Percentile



8 - Middle APOTs 90th Percentile



9 - Southern APOTs 90th Percentile

