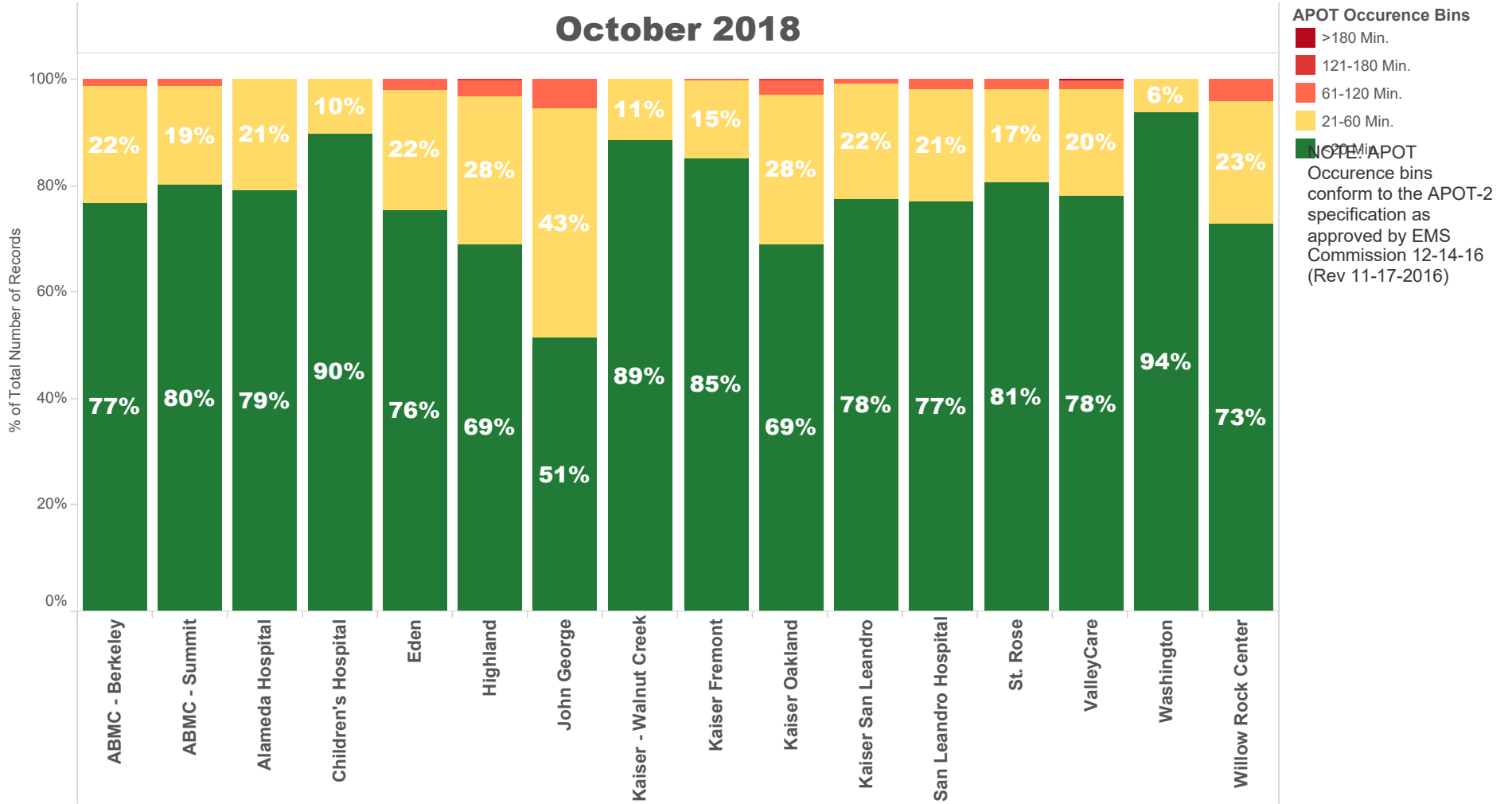


October 2018

NOTE: The **90th percentile** is the value for which 90% of the data points are smaller.

Destination Facility	Rank (Composite)	Avg. TOC	90th Percentile TOC	APOD >60 min	APOD % of N	N = Number of Transports
Kaiser - Walnut Creek	3	12 min.	21.0 min.	1	1%	183
ABMC - Berkeley	8	17 min.	33.8 min.	6	1%	523
John George	13	25 min.	51.0 min.	27	6%	439
Alameda Hospital	4	13 min.	30.0 min.	0	0%	153
Children's Hospital	2	11 min.	20.4 min.	0	0%	137
San Leandro Hospital	10	16 min.	33.6 min.	13	2%	575
Washington	1	11 min.	17.0 min.	0	0%	767
Kaiser Fremont	3	13 min.	25.0 min.	2	0%	459
ABMC - Summit	5	15 min.	28.2 min.	14	1%	1,059
ValleyCare	9	16 min.	32.0 min.	10	2%	524
Kaiser Oakland	12	19 min.	39.0 min.	21	3%	645
Kaiser San Leandro	6	16 min.	31.0 min.	6	1%	675
Eden	11	17 min.	34.0 min.	18	2%	917
Highland	12	19 min.	40.0 min.	37	3%	1,205
St. Rose	7	15 min.	29.0 min.	8	2%	438
Willow Rock Center	12	18 min.	38.3 min.	2	4%	48

October 2018



October 2018

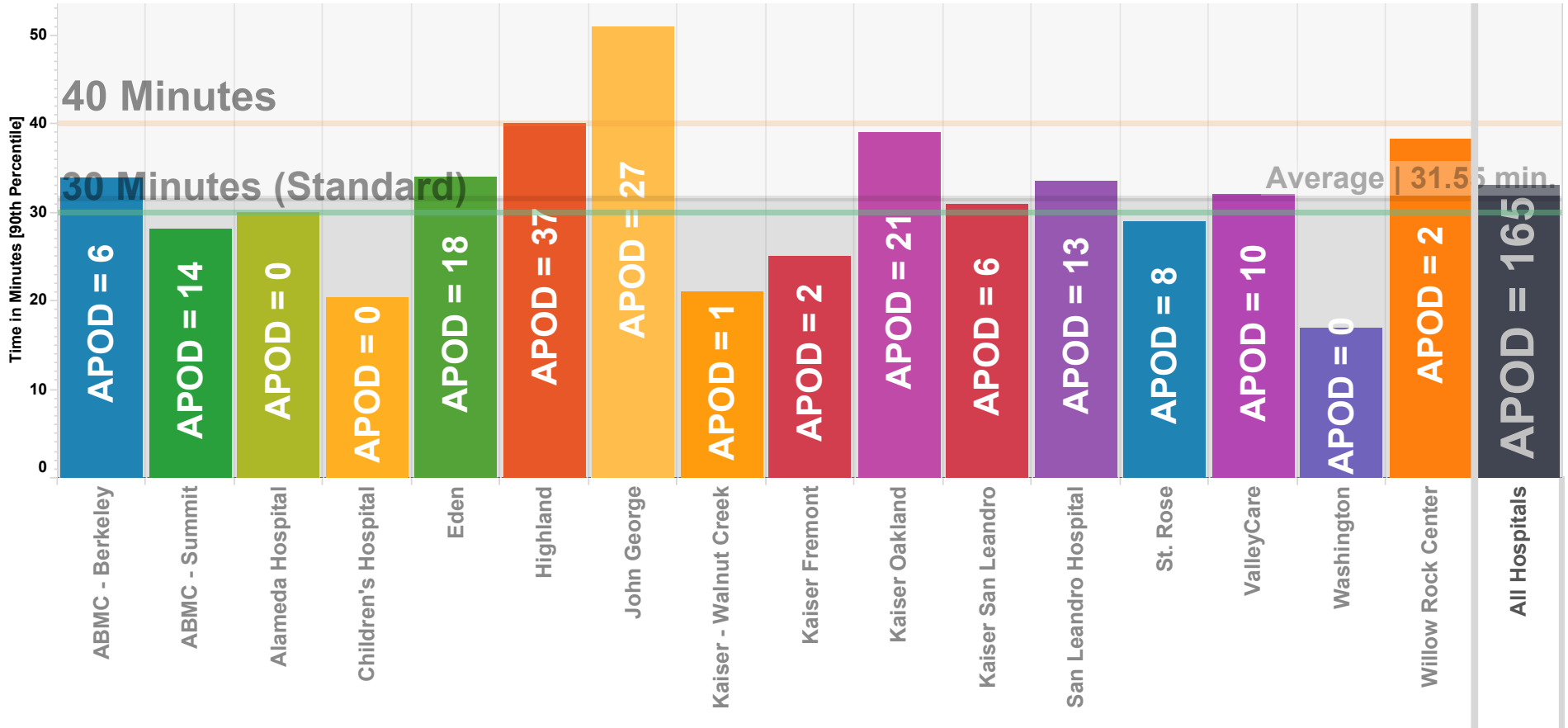
	ABMC - Berkeley	ABMC - Summit	Alameda Hospital	Children's Hospital	Eden	Highland	John George	Kaiser - Walnut Creek	Kaiser Fremont	Kaiser Oakland	Kaiser San Leandro	San Leandro Hospital	St. Rose	ValleyCare	Washington	Willow Rock Center
APOT Occurrence Bins																
<20 Min.	76.7% 401	80.1% 848	79.1% 121	89.8% 123	75.6% 693	69.0% 831	51.5% 226	88.5% 162	85.2% 391	68.8% 444	77.6% 524	77.0% 443	80.8% 354	78.1% 409	93.7% 719	72.9% 35
21-60 Min.	22.2% 116	18.6% 197	20.9% 32	10.2% 14	22.5% 206	28.0% 338	43.1% 189	11.5% 21	14.6% 67	28.2% 182	21.6% 146	21.2% 122	17.4% 76	20.0% 105	6.3% 48	22.9% 11
61-120 Min.	1.1% 6	1.3% 14			2.0% 18	2.7% 33	5.5% 24		0.2% 1	2.8% 18	0.7% 5	1.7% 10	1.8% 8	1.7% 9		4.2% 2
121-180 Min.						0.2% 3				0.2% 1						
>180 Min.														0.2% 1		

NOTE: APOT Occurrence bins conform to the APOT-2 specification as approved by EMS Commission 12-14-16 (Rev 11-17-2016)

Ambulance Patient Offload Times (APOT) October 2018

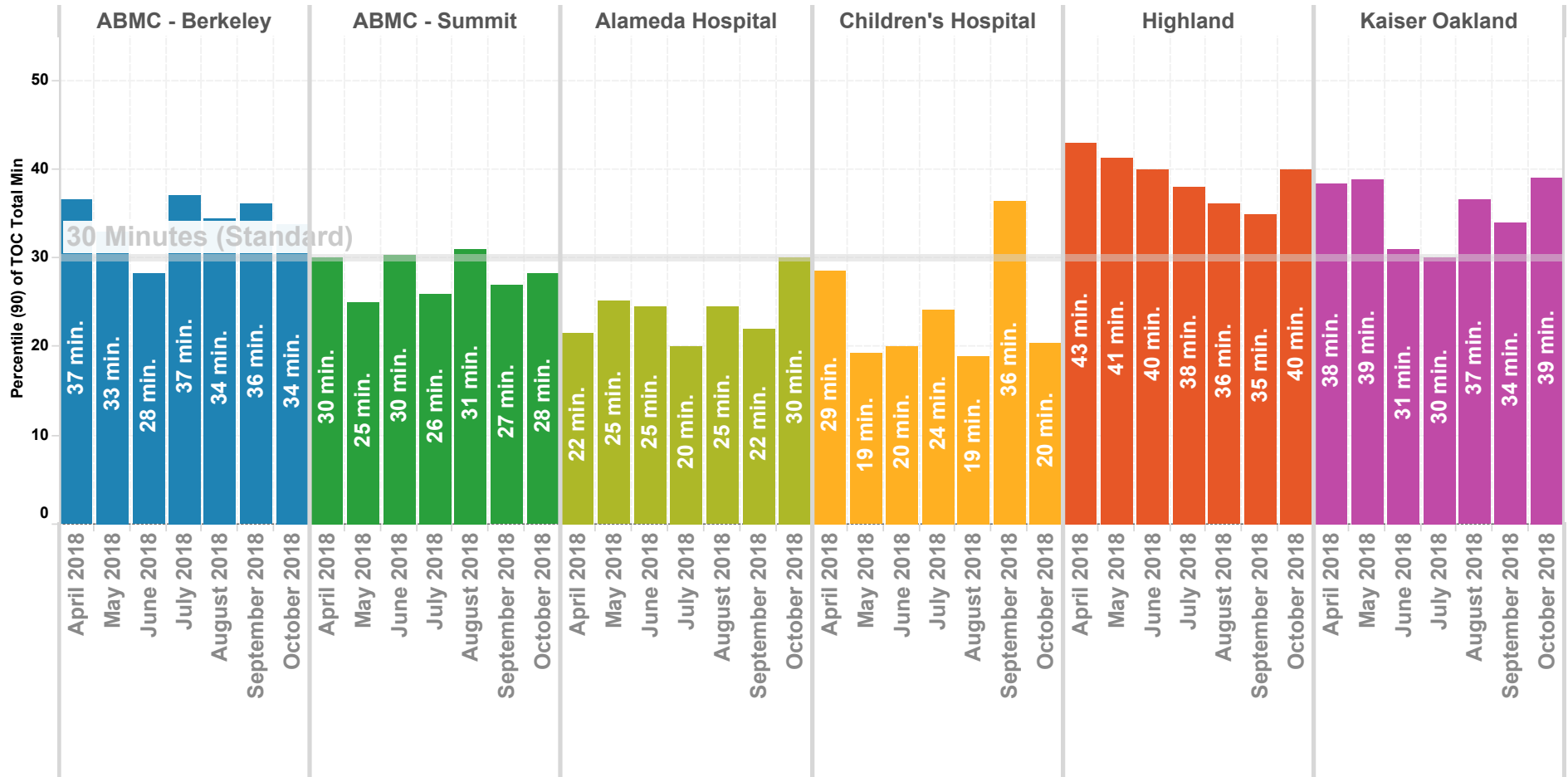
90th Percentile

NOTE: The **90th percentile** is the value for which 90% of the data points are smaller.



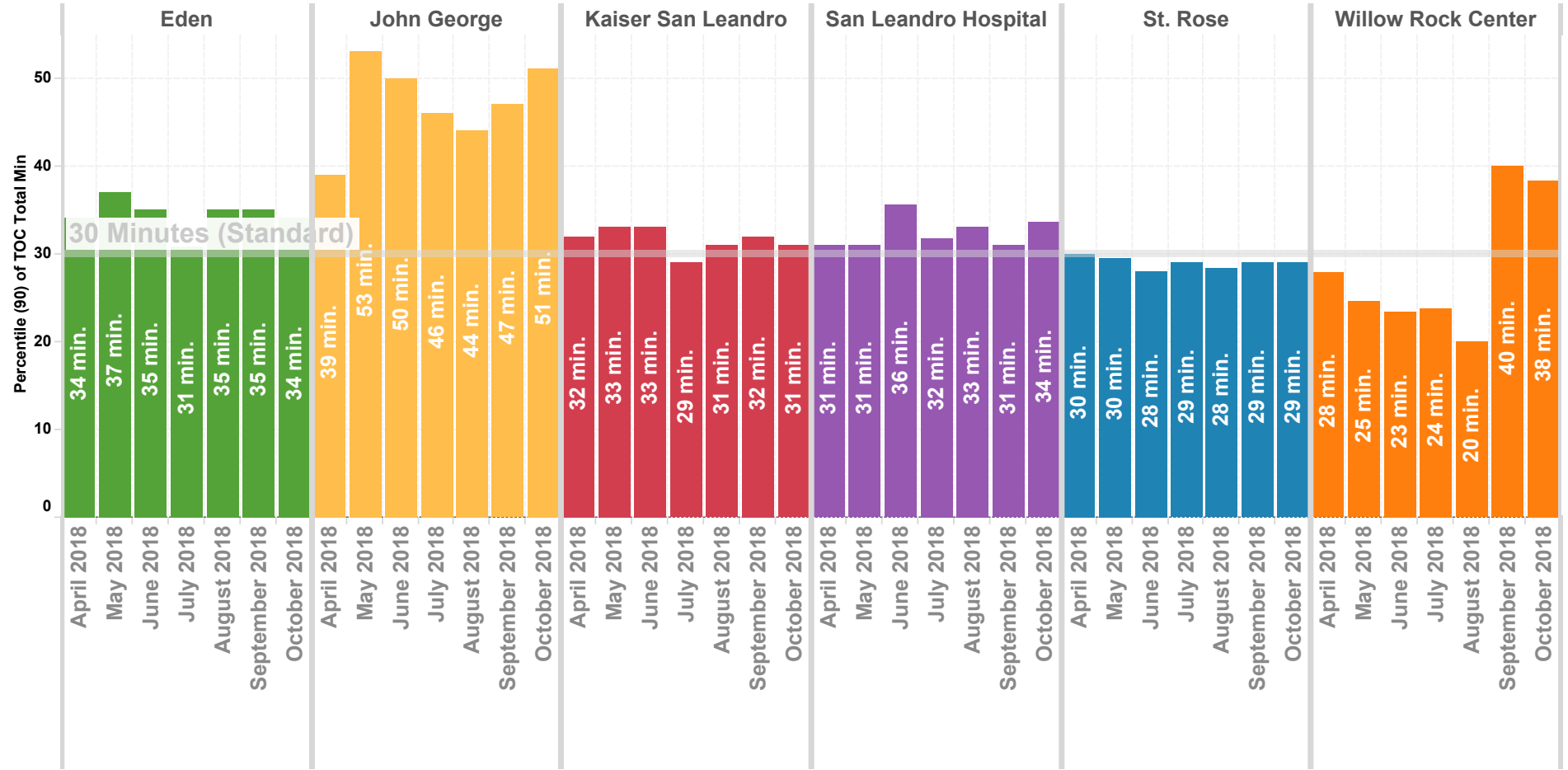
Wall Times (TOC) 2016 By Month - North County

Previous 8 Months | 90th Percentile



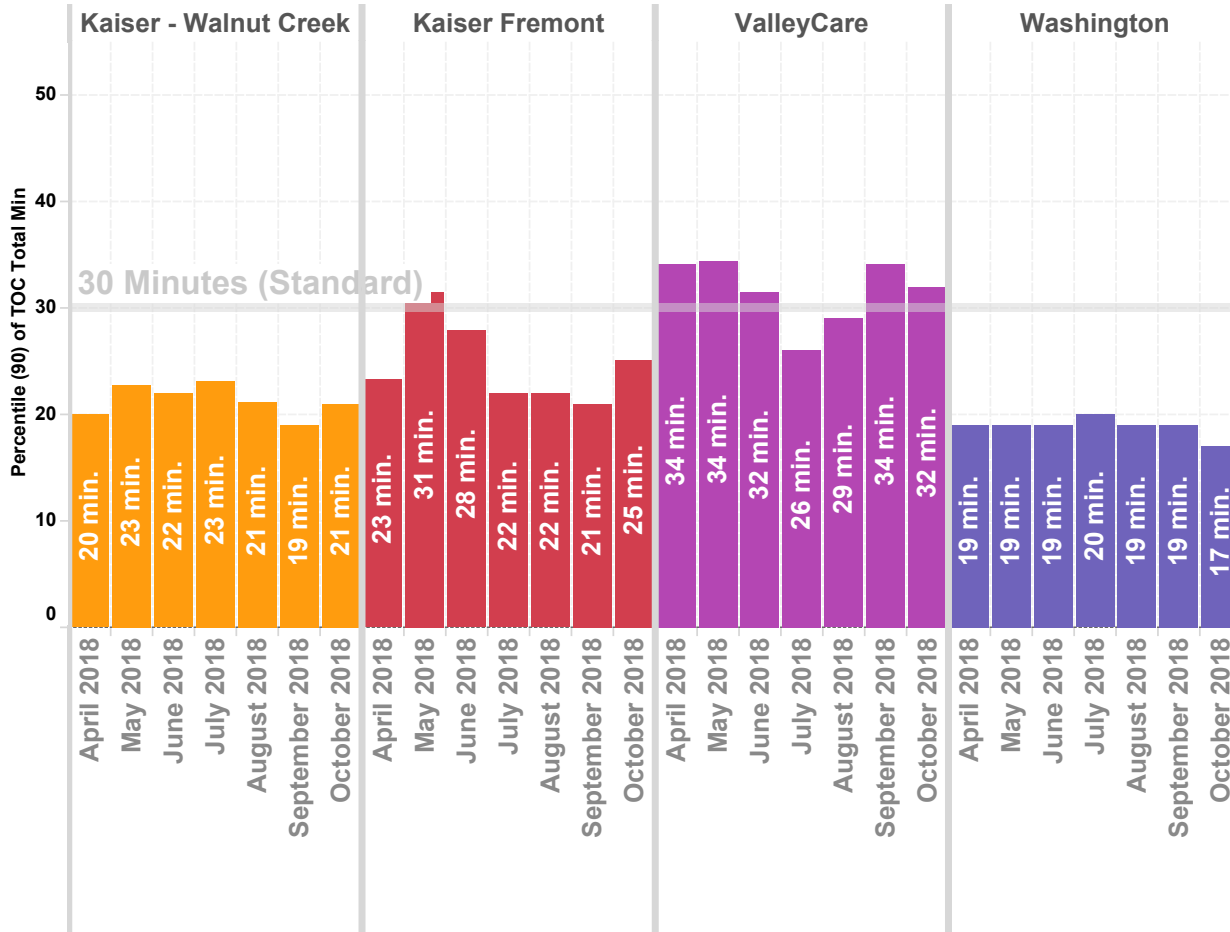
Wall Times (TOC) 2016 By Month - Mid County

Previous 8 Months | 90th Percentile



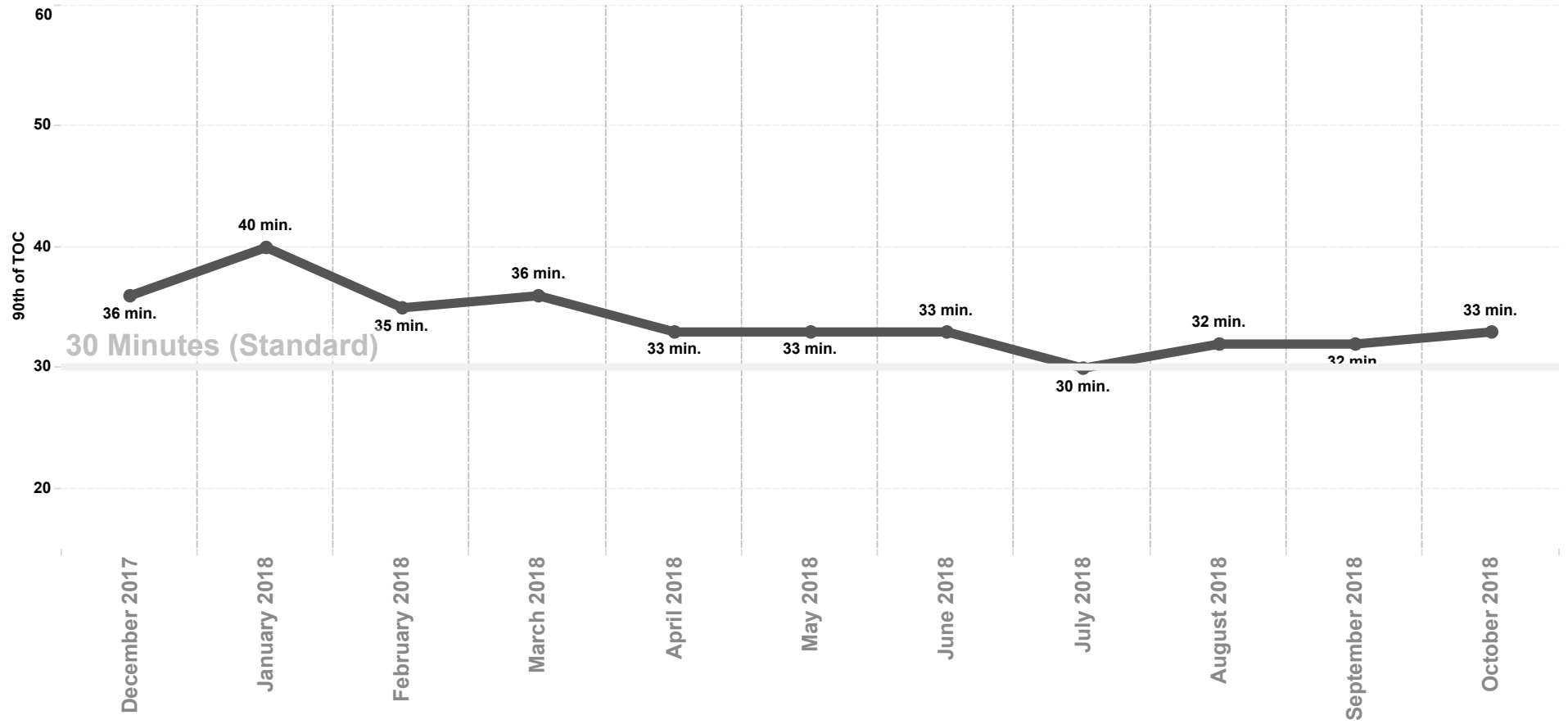
Wall Times (TOC) 2016 By Month - East County & South County

Previous 8 Months | 90th Percentile



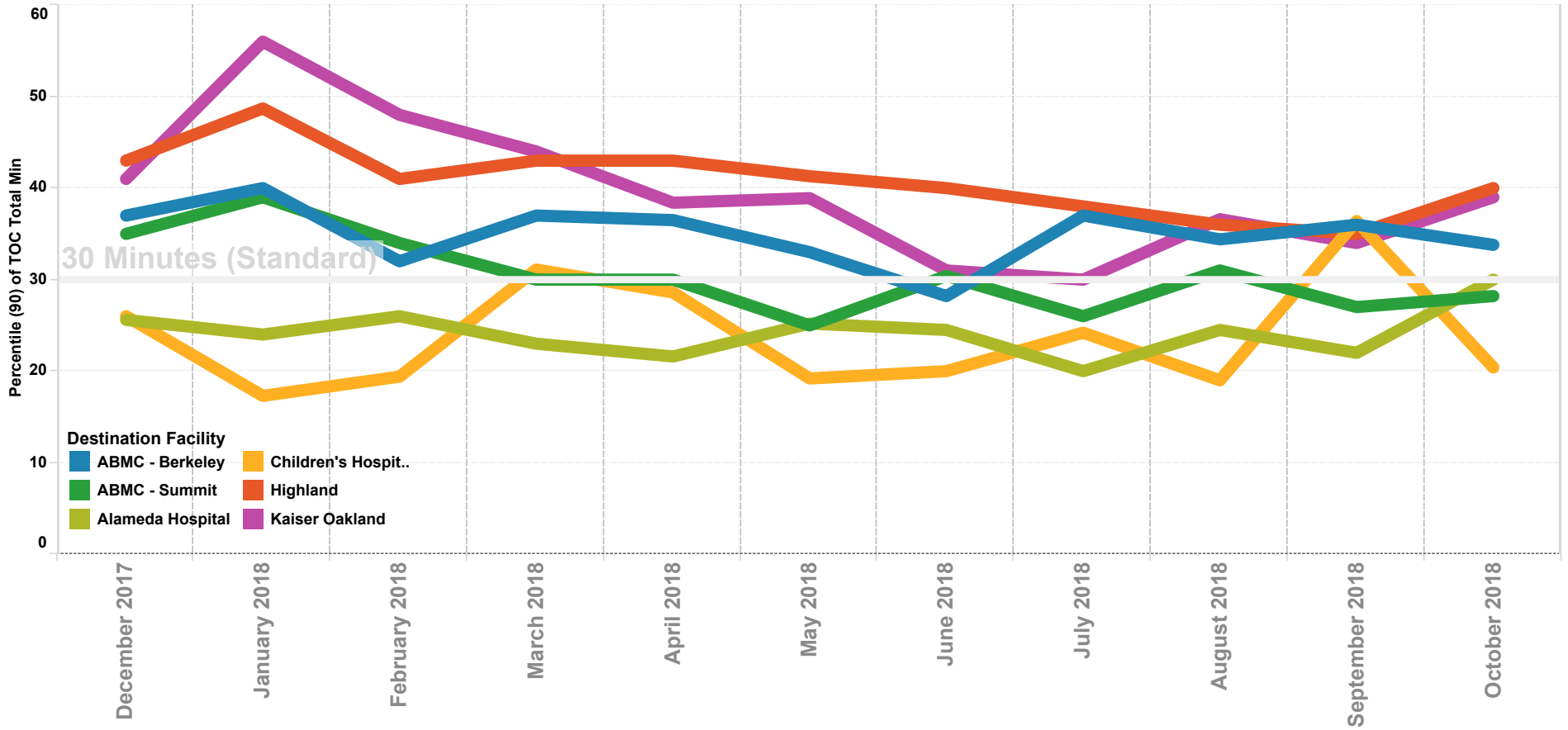
APOT All Hospitals

Previous 12 Months | 90th Percentile



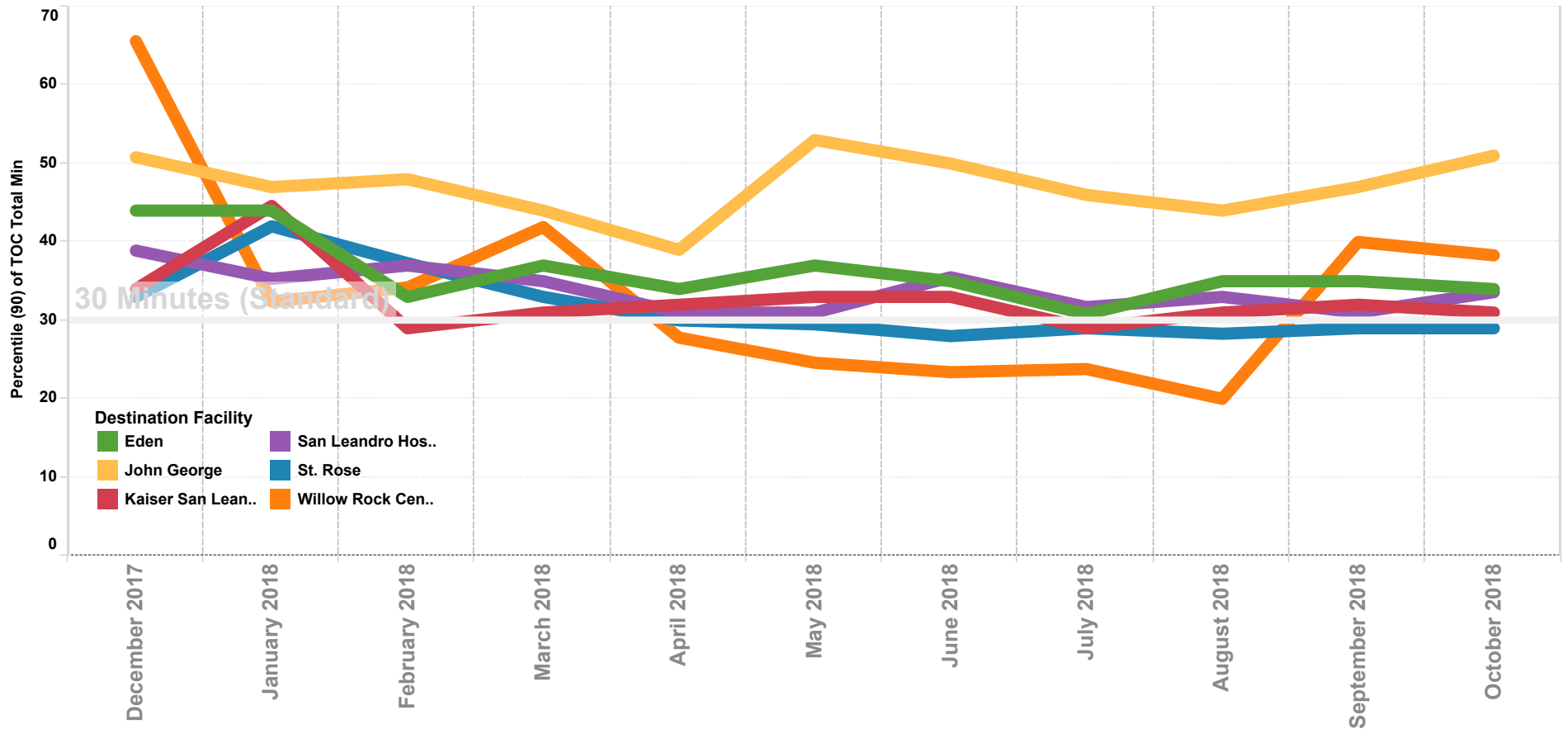
APOT North County

Previous 12 Months | 90th Percentile



APOT Mid County

Previous 12 Months | 90th Percentile



APOT South and East County

Previous 12 Months | 90th Percentile

