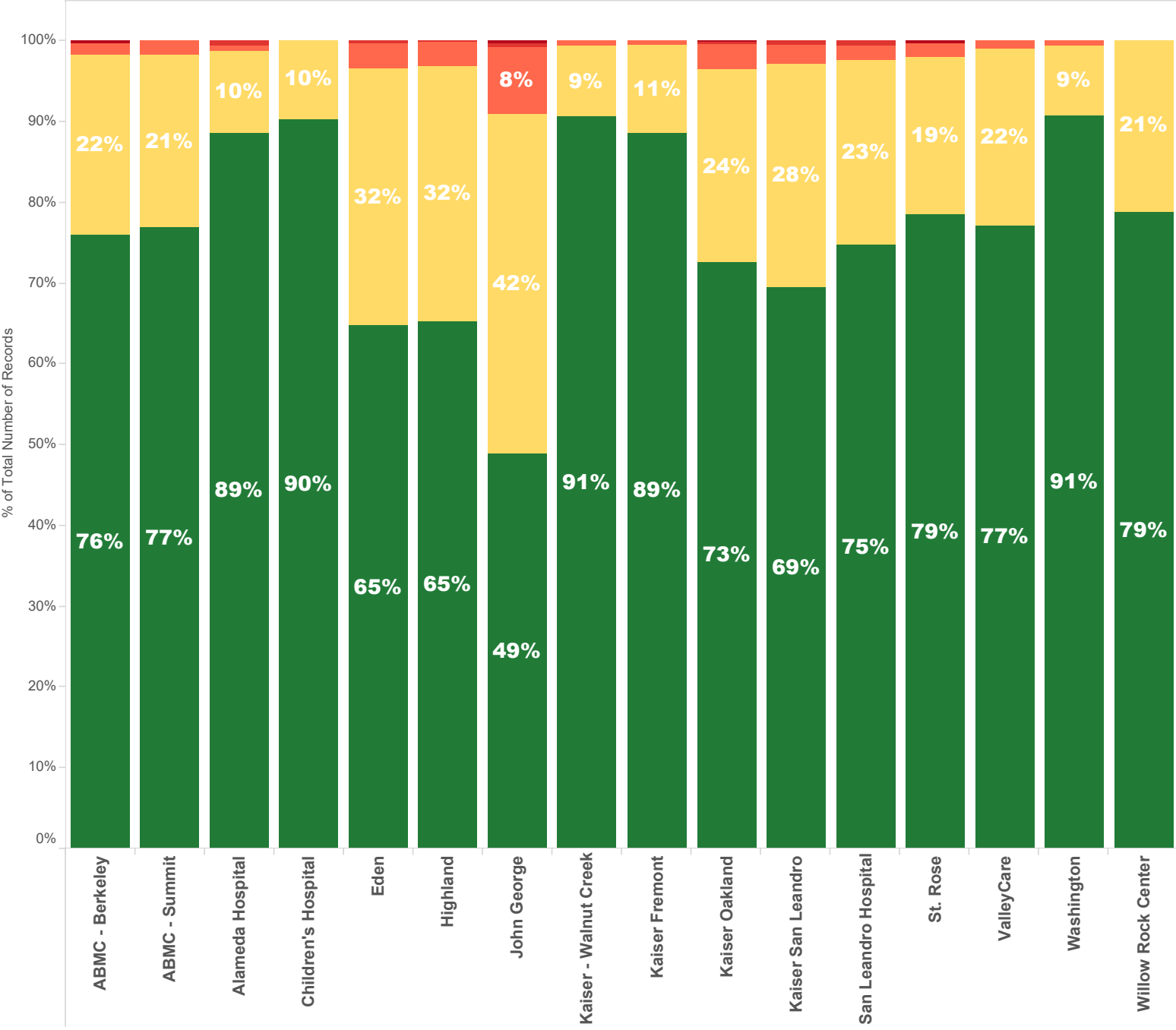


December 2018

NOTE: The **90th percentile** is the value for which 90% of the data points are smaller.

| Destination Facility | Rank (Composite) | Avg. TOC | 90th Percentile TOC | APOD >60 min | APOD % of N | N = Number of Transports |
|-----------------------------|------------------|----------|---------------------|--------------|-------------|--------------------------|
| Kaiser - Walnut Creek | 2 | 13 min. | 20.0 min. | 1 | 1% | 171 |
| ABMC - Berkeley | 6 | 17 min. | 31.2 min. | 9 | 2% | 529 |
| John George | 13 | 28 min. | 57.0 min. | 34 | 9% | 380 |
| Alameda Hospital | 5 | 12 min. | 24.0 min. | 2 | 1% | 167 |
| Children's Hospital | 1 | 12 min. | 20.0 min. | 0 | 0% | 104 |
| San Leandro Hospital | 9 | 18 min. | 34.0 min. | 13 | 2% | 551 |
| Washington | 3 | 12 min. | 19.8 min. | 5 | 1% | 763 |
| Kaiser Fremont | 4 | 12 min. | 22.7 min. | 3 | 1% | 464 |
| ABMC - Summit | 7 | 16 min. | 33.0 min. | 22 | 2% | 1,142 |
| ValleyCare | 5 | 15 min. | 29.0 min. | 5 | 1% | 530 |
| Kaiser Oakland | 11 | 18 min. | 41.0 min. | 23 | 4% | 624 |
| Kaiser San Leandro | 10 | 20 min. | 41.0 min. | 23 | 3% | 788 |
| Eden | 12 | 20 min. | 45.0 min. | 38 | 4% | 1,019 |
| Highland | 10 | 20 min. | 40.0 min. | 38 | 3% | 1,166 |
| St. Rose | 8 | 16 min. | 33.0 min. | 9 | 2% | 452 |
| Willow Rock Center | 5 | 15 min. | 39.5 min. | 0 | 0% | 38 |

December 2018



APOT Occurrence Bins

- >180 Min.
- 121-180 Min.
- 61-120 Min.
- 21-60 Min.
- <20 Min.

NOTE: APOT Occurrence bins conform to the APOT-2 specification as approved by EMS Commission 12-14-16 (Rev 11-17-2016)

December 2018

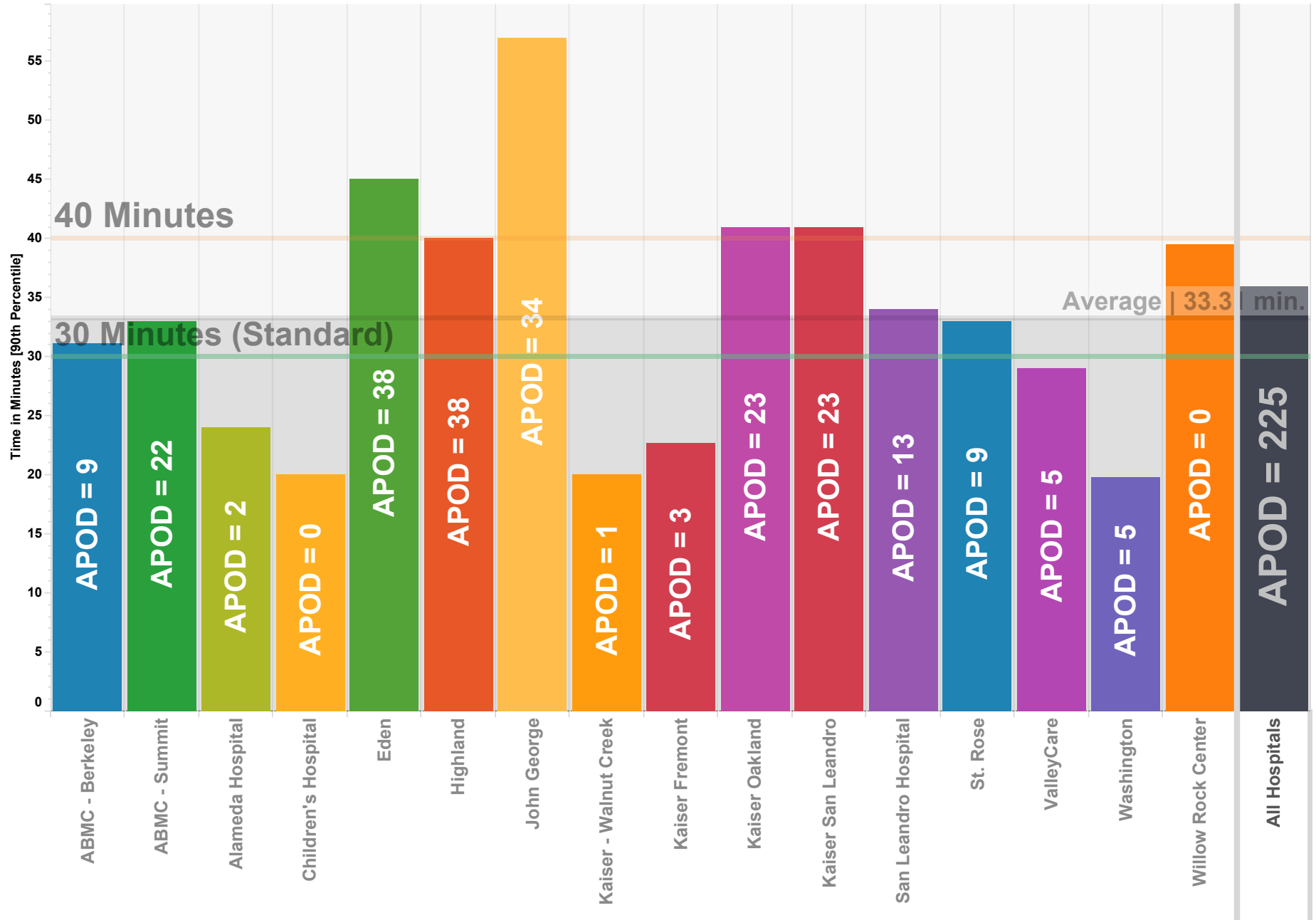
| | ABMC - Berkeley | ABMC - Summit | Alameda Hospital | Children's Hospital | Eden | Highland | John George | Kaiser - Walnut Creek | Kaiser Fremont | Kaiser Oakland | Kaiser San Leandro | San Leandro Hospital | St. Rose | ValleyCare | Washington | Willow Rock Center |
|-----------------------------|-----------------|---------------|------------------|---------------------|--------------|--------------|--------------|-----------------------|----------------|----------------|--------------------|----------------------|--------------|--------------|--------------|--------------------|
| APOT Occurrence Bins | | | | | | | | | | | | | | | | |
| <20 Min. | 76.0% 402 | 76.9% 878 | 88.6% 148 | 90.4% 94 | 64.9% 661 | 65.3% 761 | 48.9% 186 | 90.6% 155 | 88.6% 411 | 72.6% 453 | 69.4% 547 | 74.8% 412 | 78.5% 355 | 77.2% 409 | 90.8% 693 | 78.9% 30 |
| 21-60 Min. | 22.3% 118 | 21.5% 245 | 10.2% 17 | 9.6% 10 | 31.7% 323 | 31.6% 368 | 42.1% 160 | 8.8% 15 | 11.0% 51 | 24.0% 150 | 27.8% 219 | 22.9% 126 | 19.5% 88 | 21.9% 116 | 8.5% 65 | 21.1% 8 |
| 61-120 Min. | 1.5% 8 | 1.7% 19 | 0.6% 1 | | 3.1% 32 | 3.1% 36 | 8.2% 31 | 0.6% 1 | 0.4% 2 | 2.9% 18 | 2.4% 19 | 1.8% 10 | 1.8% 8 | 0.9% 5 | 0.7% 5 | |
| 121-180 Min. | | | 0.6% 1 | | 0.3% 3 | 0.1% 1 | 0.5% 2 | | | 0.3% 2 | 0.4% 3 | 0.5% 3 | | | | |
| >180 Min. | 0.2% 1 | | | | | | 0.3% 1 | | | 0.2% 1 | | | 0.2% 1 | | | |

NOTE: APOT Occurrence bins conform to the APOT-2 specification as approved by EMS Commission 12-14-16 (Rev 11-17-2016)

Ambulance Patient Offload Times (APOT) December 2018

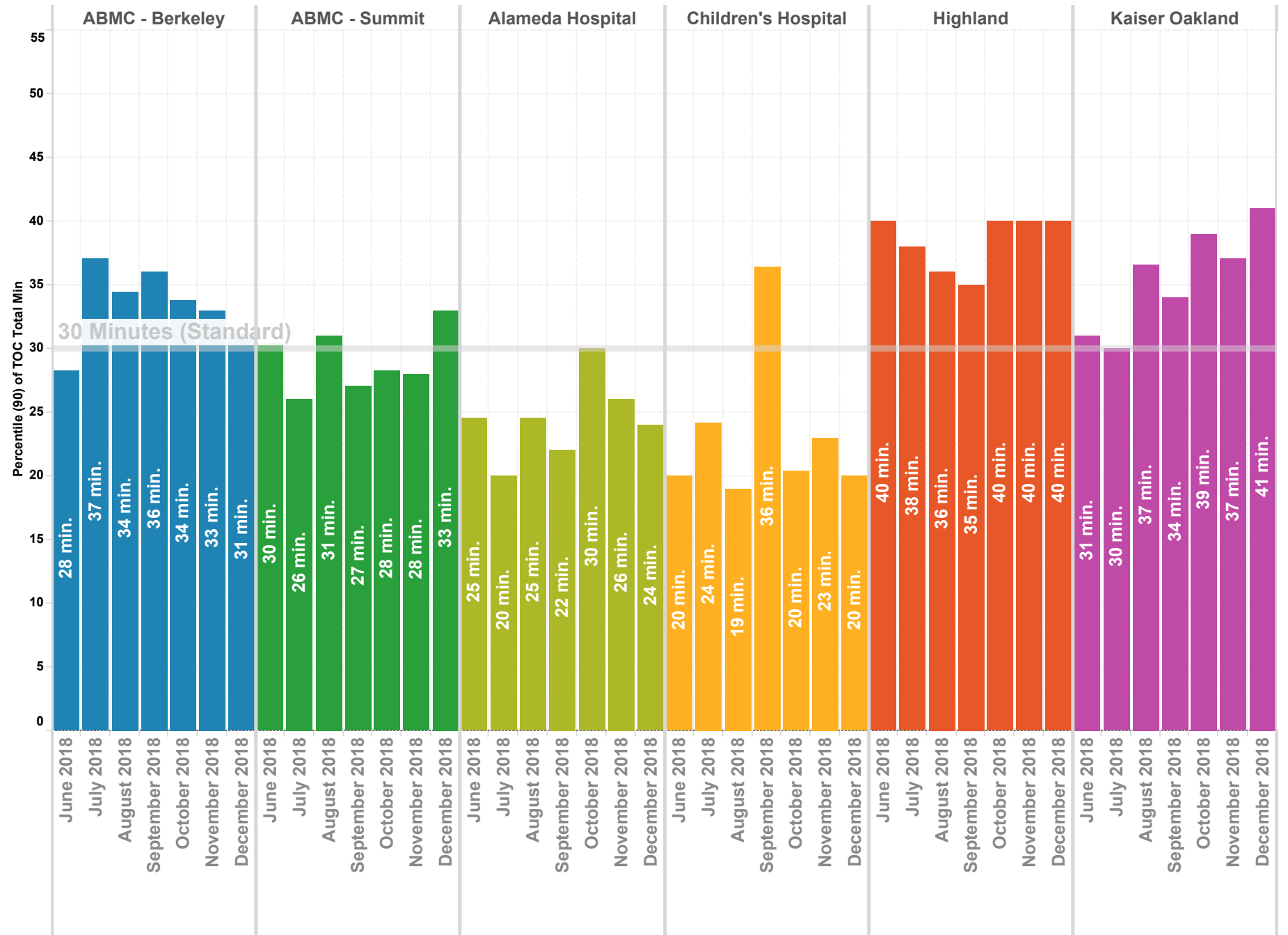
90th Percentile

NOTE: The **90th percentile** is the value for which 90% of the data points are smaller.



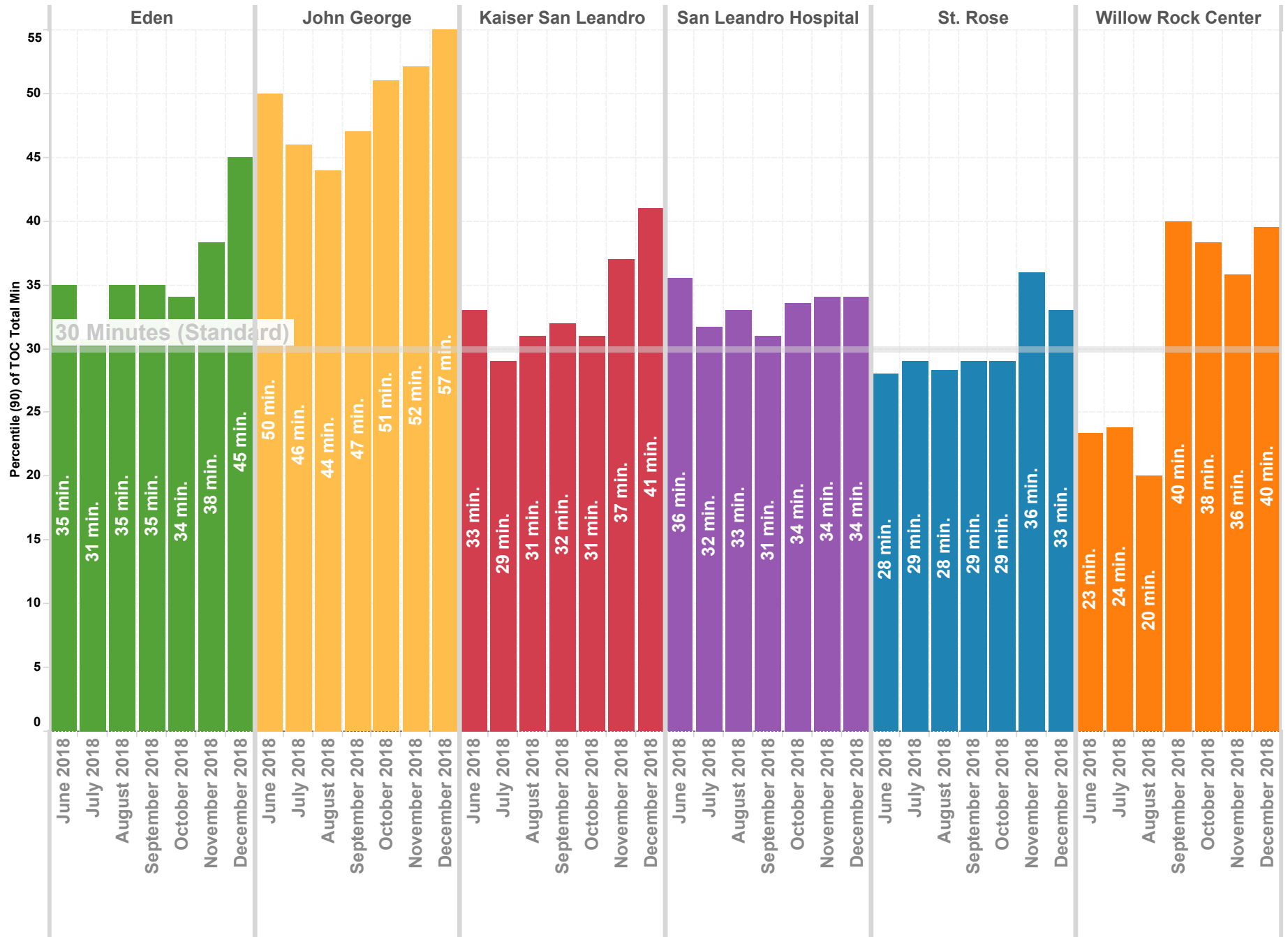
Wall Times (TOC) 2016 By Month - North County

Previous 8 Months | 90th Percentile



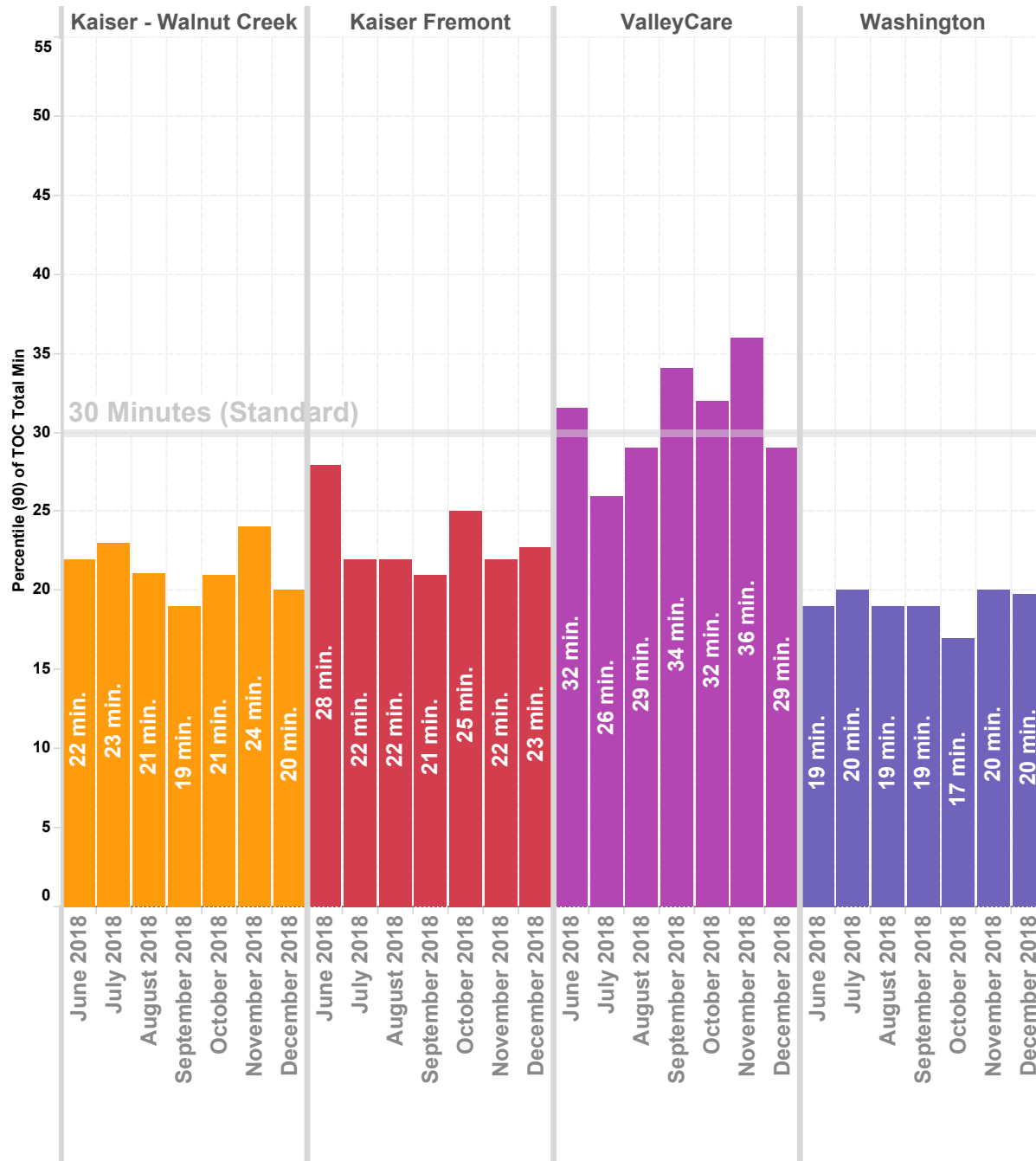
Wall Times (TOC) 2016 By Month - Mid County

Previous 8 Months | 90th Percentile



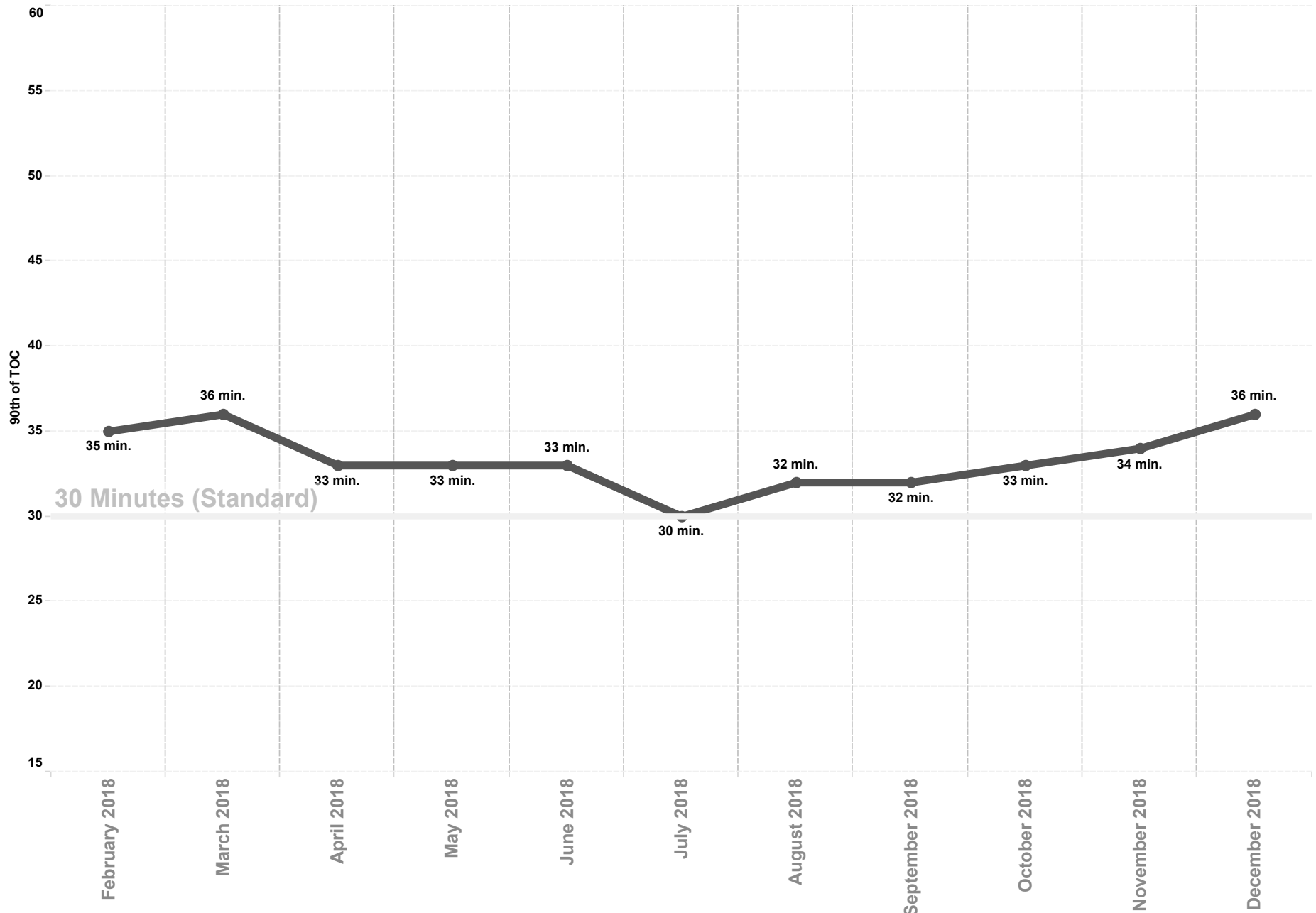
Wall Times (TOC) 2016 By Month - East County & South County

Previous 8 Months | 90th Percentile



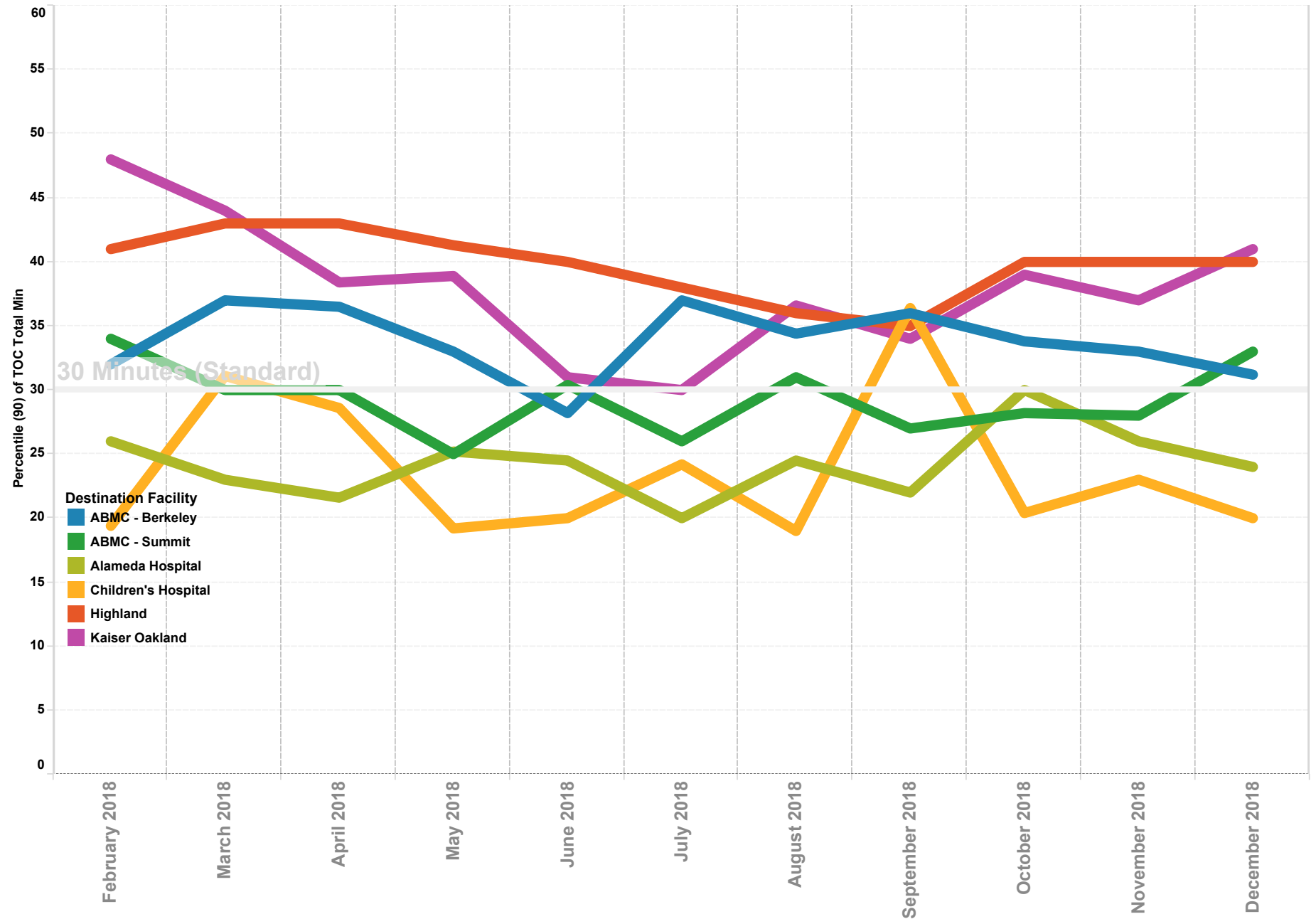
APOT All Hospitals

Previous 12 Months | 90th Percentile



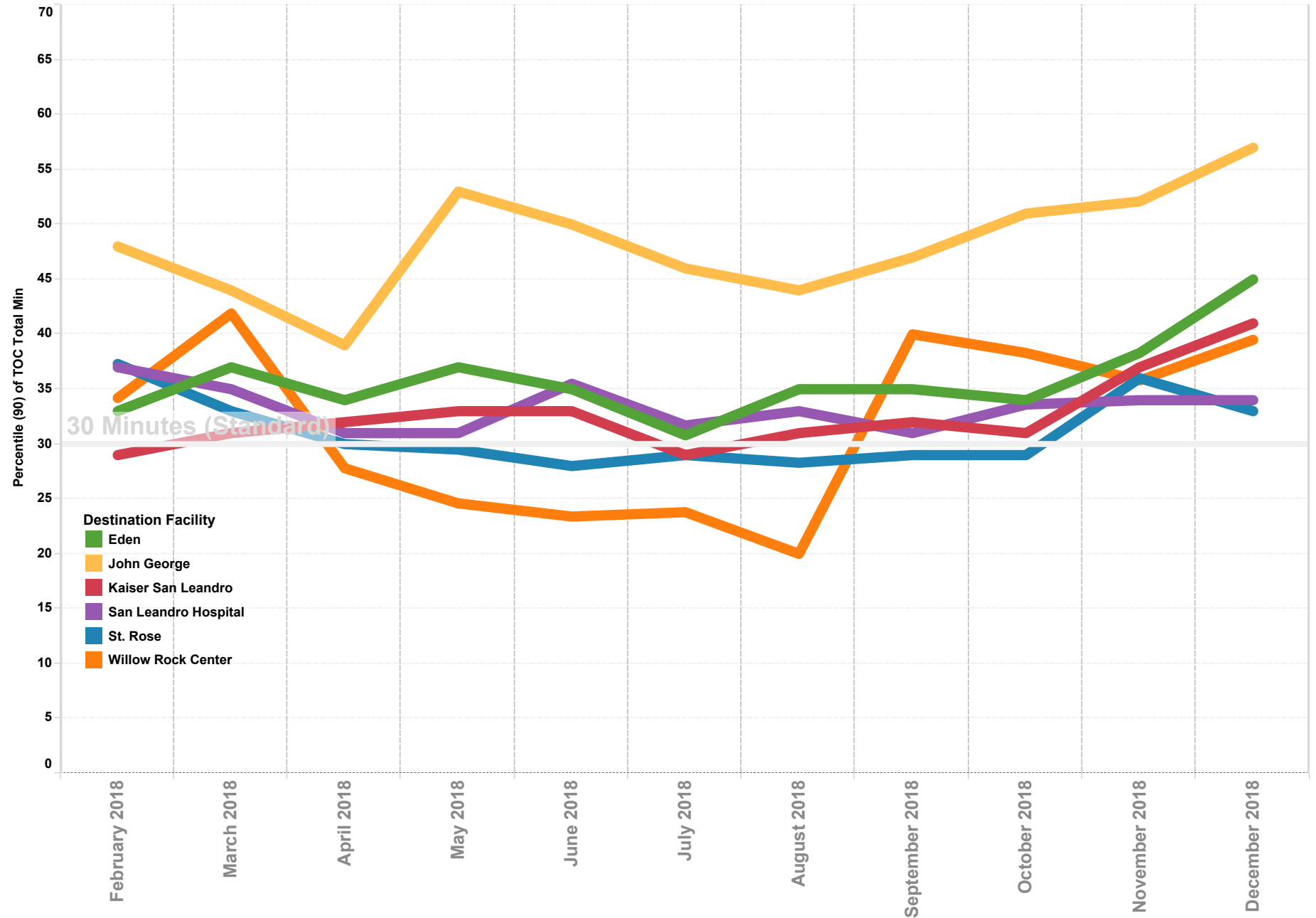
APOT North County

Previous 12 Months | 90th Percentile



APOT Mid County

Previous 12 Months | 90th Percentile



APOT South and East County

Previous 12 Months | 90th Percentile

