

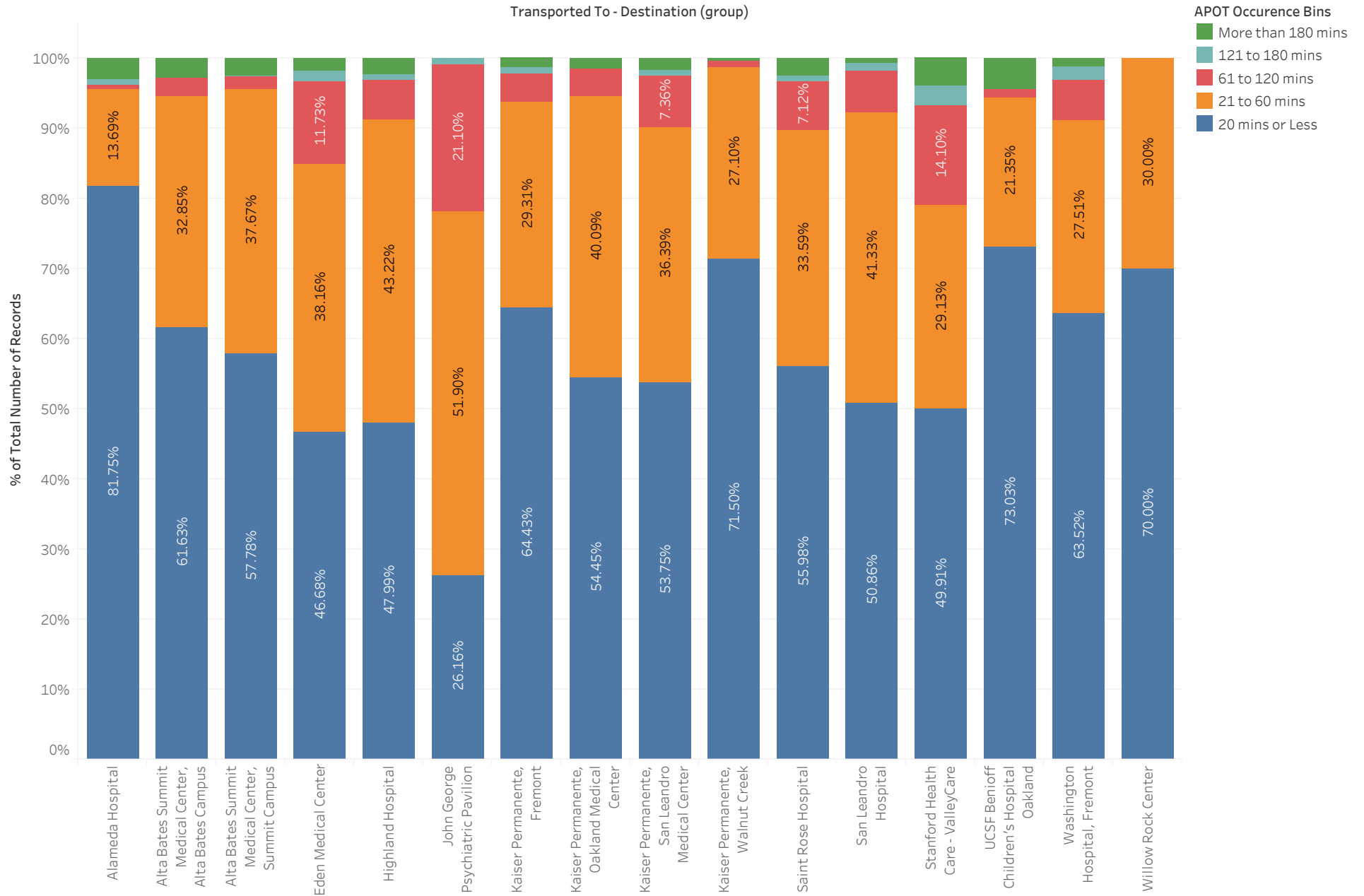
## Summary - December 2020

Transported To - Destination (group)	Avg. TOC	Percentile (90) of TOC	APOD > 60 min	APOD % of N	
Alameda Hospital	47.5	30.0	12	5%	263
Alta Bates Summit Medical Center, Alta Bates Campus	46.3	45.0	23	6%	417
Alta Bates Summit Medical Center, Summit Campus	52.5	43.0	50	5%	1,099
Eden Medical Center	50.6	78.0	137	15%	904
Highland Hospital	50.6	57.0	96	9%	1,092
John George Psychiatric Pavilion	40.3	75.6	52	22%	237
Kaiser Permanente, Fremont	30.8	46.0	28	6%	447
Kaiser Permanente, Oakland Medical Center	35.7	50.0	35	5%	641
Kaiser Permanente, San Leandro Medical Center	42.7	60.0	71	10%	720
Kaiser Permanente, Walnut Creek	19.6	30.3	3	1%	214
Saint Rose Hospital	56.5	64.0	41	10%	393
San Leandro Hospital	34.2	55.0	41	8%	525
Stanford Health Care - ValleyCare	47.9	100.0	113	21%	539
UCSF Benioff Children's Hospital Oakland	70.1	44.9	5	6%	89
Washington Hospital, Fremont	35.3	55.8	75	9%	836
Willow Rock Center	20.4	44.1	0	0%	10
<b>Grand Total</b>					<b>8,426</b>

# APOT Bins

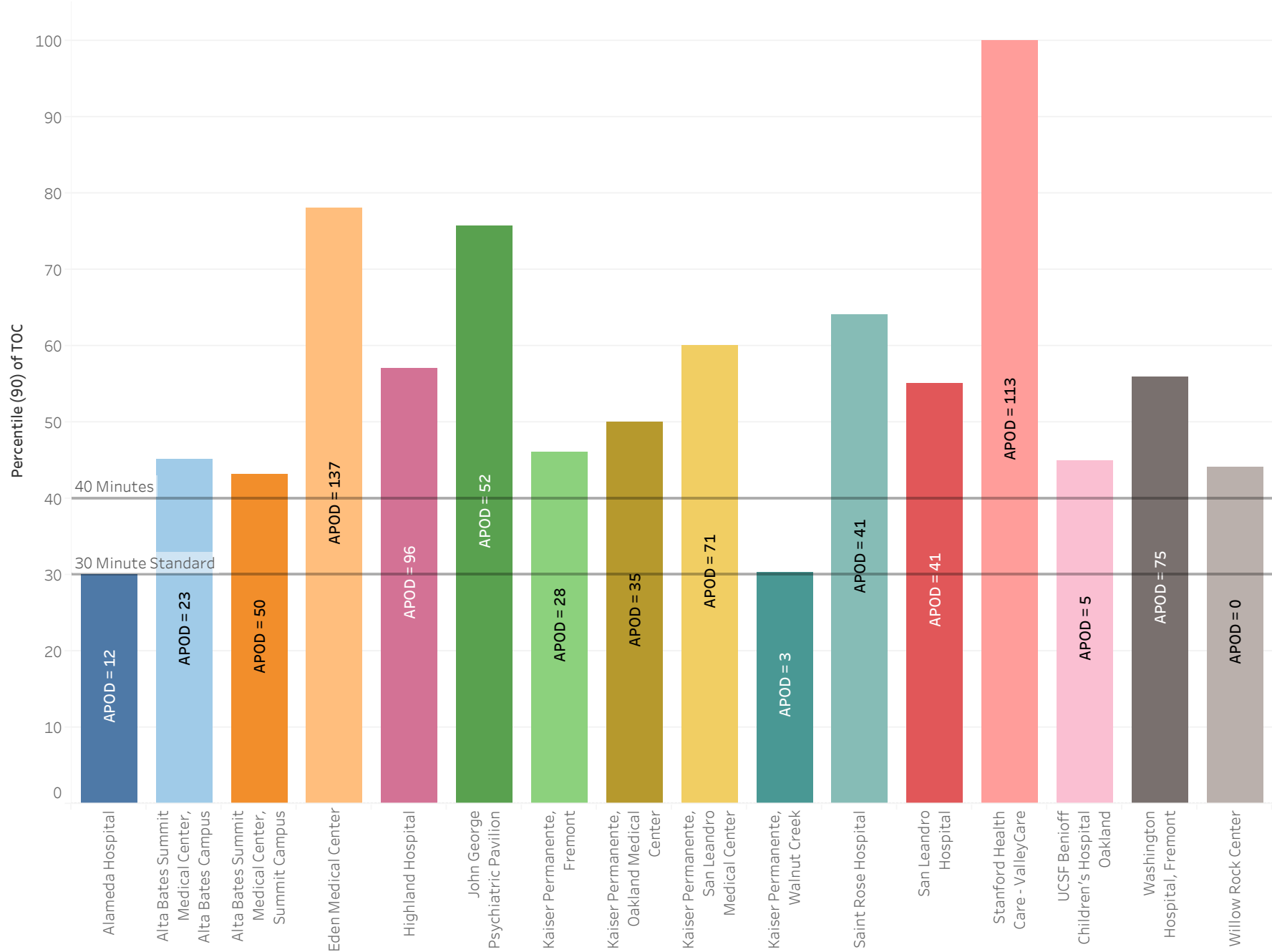
Transported To - Destination (group)	APOT Occurrence Bins					Grand Total
	20 mins or Less	21 to 60 mins	61 to 120 mins	121 to 180 mins	More than 180 mins	
Alameda Hospital	215 81.75%	36 13.69%	2 0.76%	2 0.76%	8 3.04%	263 100.00%
Alta Bates Summit Medical Center, Alta Bates Campus	257 61.63%	137 32.85%	11 2.64%		12 2.88%	417 100.00%
Alta Bates Summit Medical Center, Summit Campus	635 57.78%	414 37.67%	20 1.82%	3 0.27%	27 2.46%	1,099 100.00%
Eden Medical Center	422 46.68%	345 38.16%	106 11.73%	14 1.55%	17 1.88%	904 100.00%
Highland Hospital	524 47.99%	472 43.22%	61 5.59%	9 0.82%	26 2.38%	1,092 100.00%
John George Psychiatric Pavilion	62 26.16%	123 51.90%	50 21.10%	2 0.84%		237 100.00%
Kaiser Permanente, Fremont	288 64.43%	131 29.31%	18 4.03%	4 0.89%	6 1.34%	447 100.00%
Kaiser Permanente, Oakland Medical Center	349 54.45%	257 40.09%	25 3.90%		10 1.56%	641 100.00%
Kaiser Permanente, San Leandro Medical Center	387 53.75%	262 36.39%	53 7.36%	6 0.83%	12 1.67%	720 100.00%
Kaiser Permanente, Walnut Creek	153 71.50%	58 27.10%	2 0.93%		1 0.47%	214 100.00%
Saint Rose Hospital	220 55.98%	132 33.59%	28 7.12%	3 0.76%	10 2.54%	393 100.00%
San Leandro Hospital	267 50.86%	217 41.33%	31 5.90%	6 1.14%	4 0.76%	525 100.00%
Stanford Health Care - ValleyCare	269 49.91%	157 29.13%	76 14.10%	15 2.78%	22 4.08%	539 100.00%
UCSF Benioff Children's Hospital Oakland	65 73.03%	19 21.35%	1 1.12%		4 4.49%	89 100.00%
Washington Hospital, Fremont	531 63.52%	230 27.51%	49 5.86%	16 1.91%	10 1.20%	836 100.00%
Willow Rock Center	7 70.00%	3 30.00%				10 100.00%
<b>Grand Total</b>	<b>4,651</b> <b>55.20%</b>	<b>2,993</b> <b>35.52%</b>	<b>533</b> <b>6.33%</b>	<b>80</b> <b>0.95%</b>	<b>169</b> <b>2.01%</b>	<b>8,426</b> <b>100.00%</b>

# APOT Bins Graph



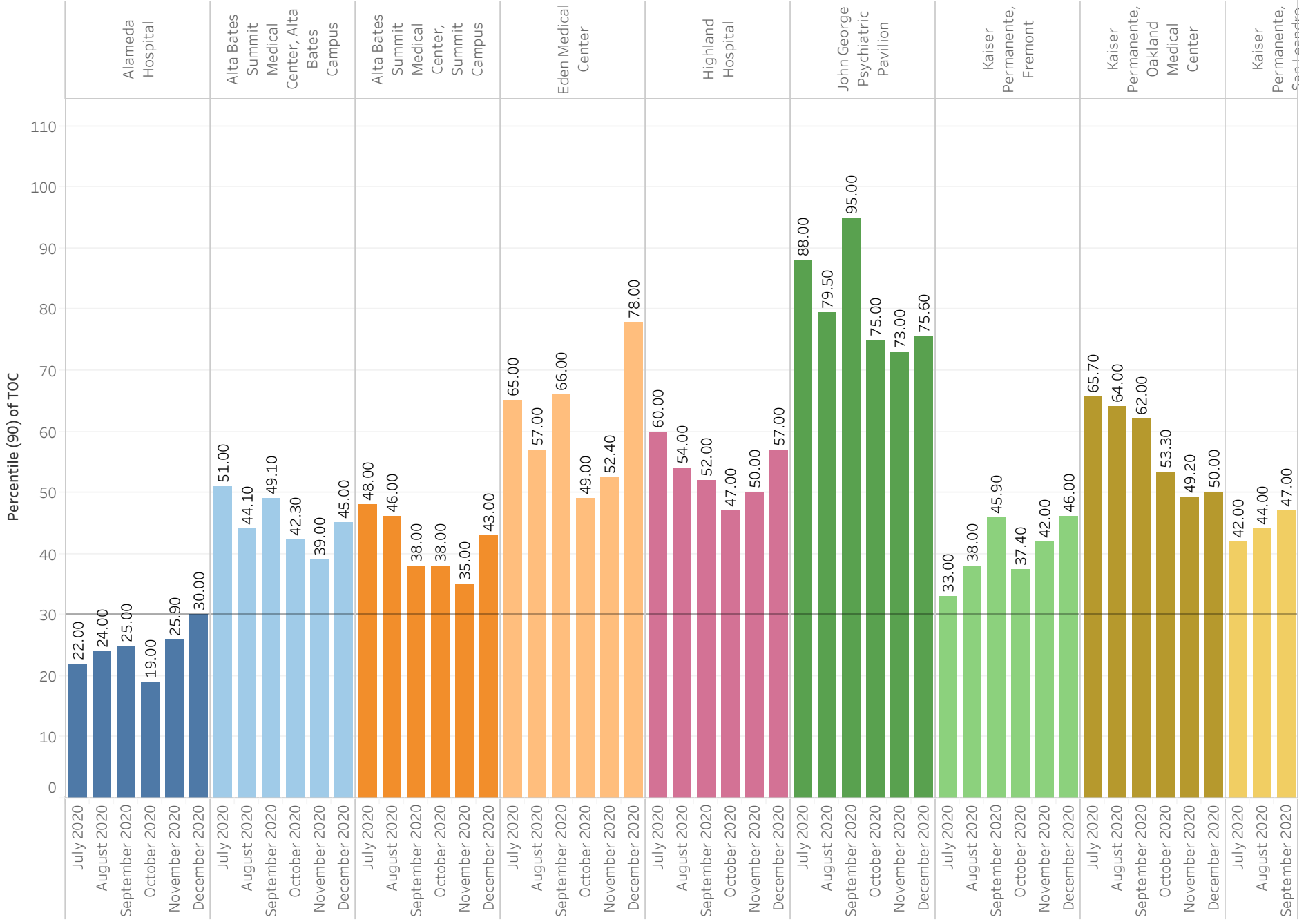
# Current Month 90% APOT

Transported To - Destination (group)

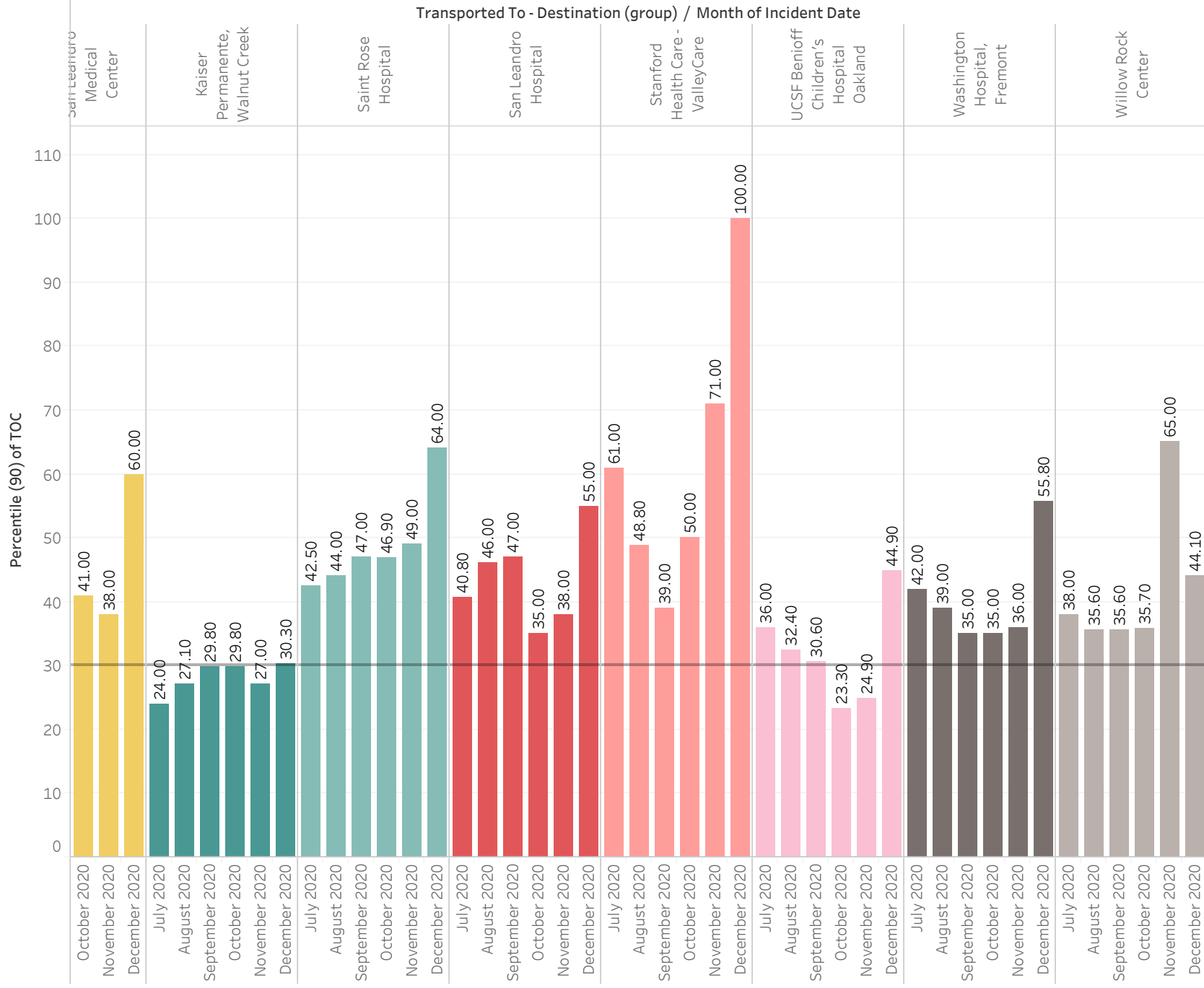


# Prev Month 90% APOT

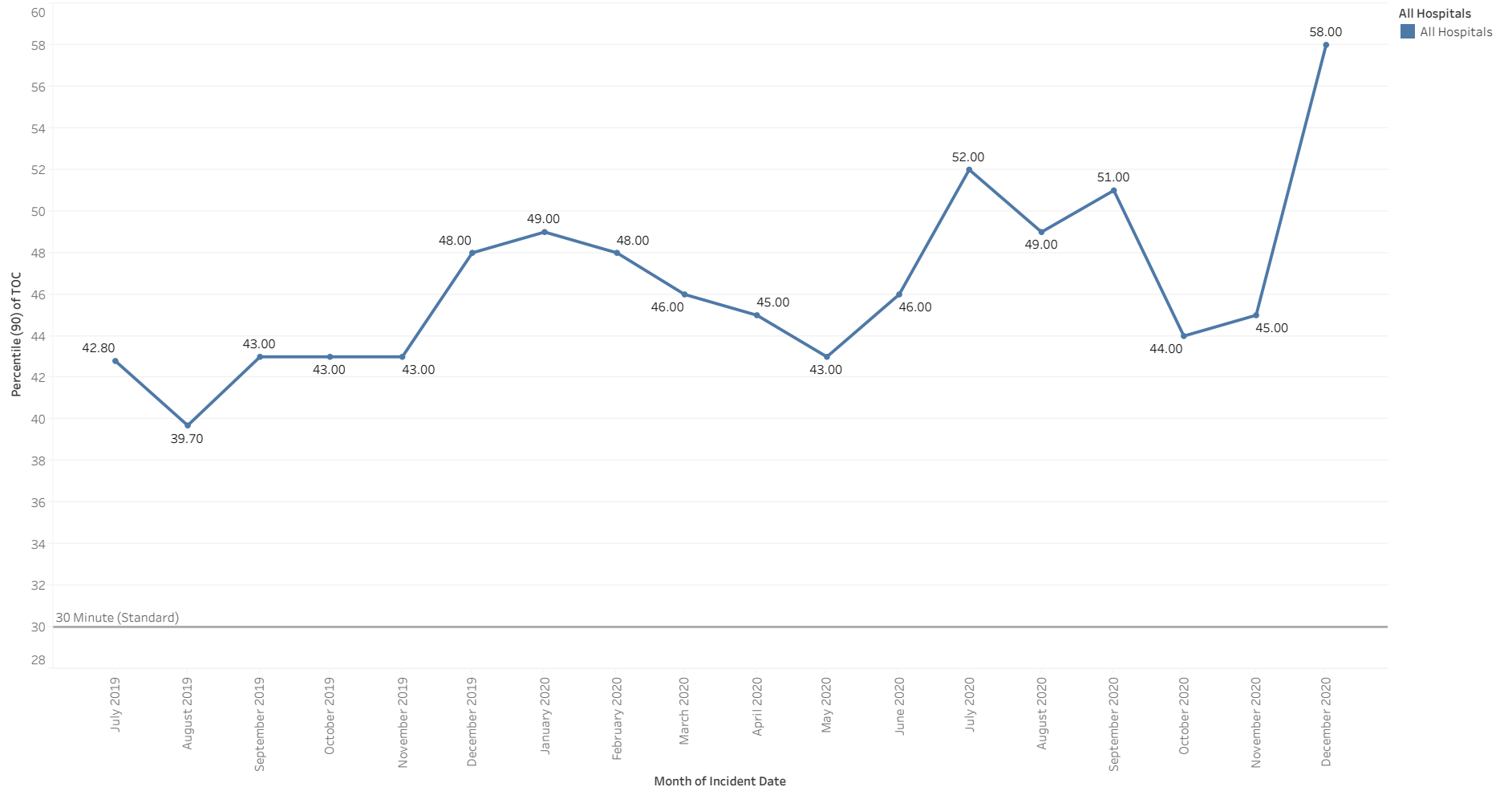
Transported To - Destination (group) / Month of Incident Date



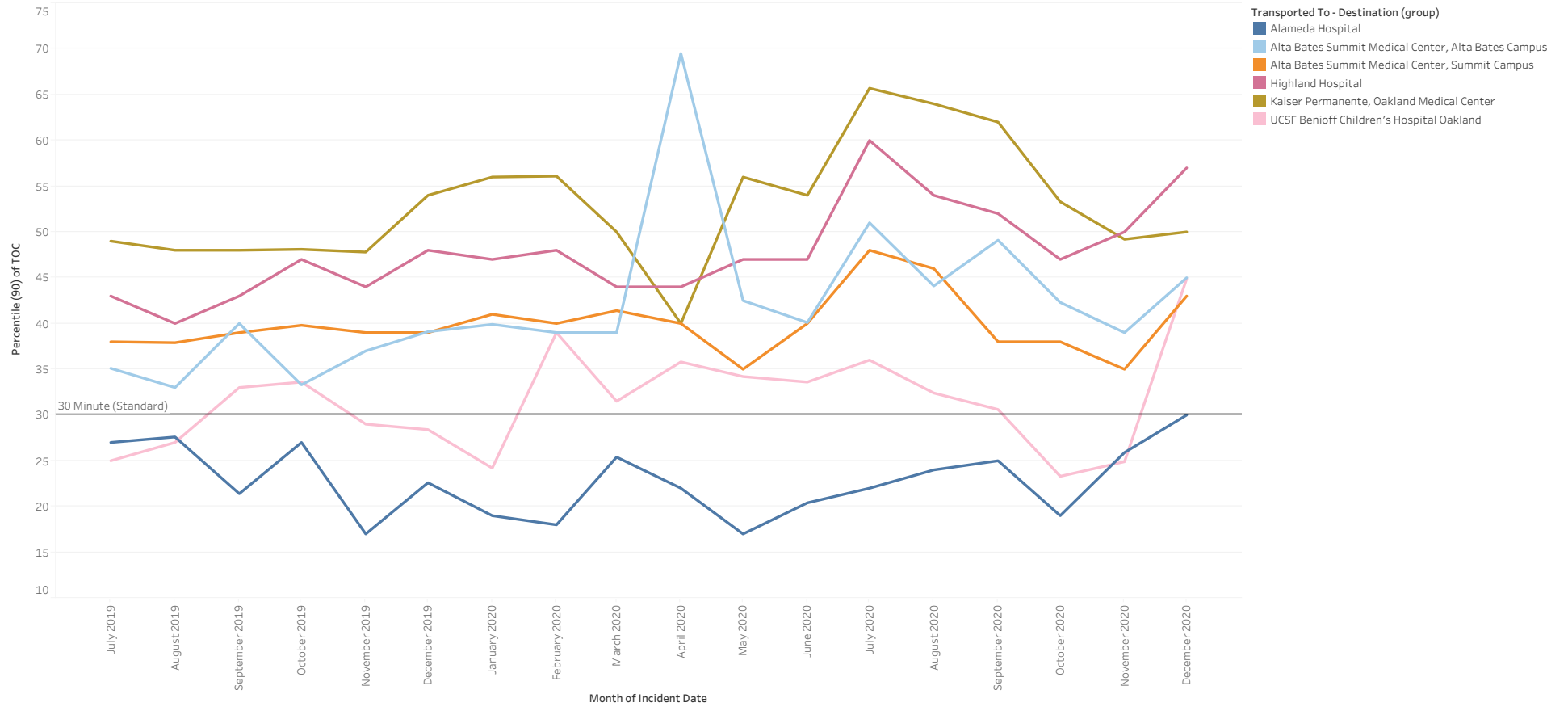
# Prev Month 90% APOT



# All Hospital 90% APOT

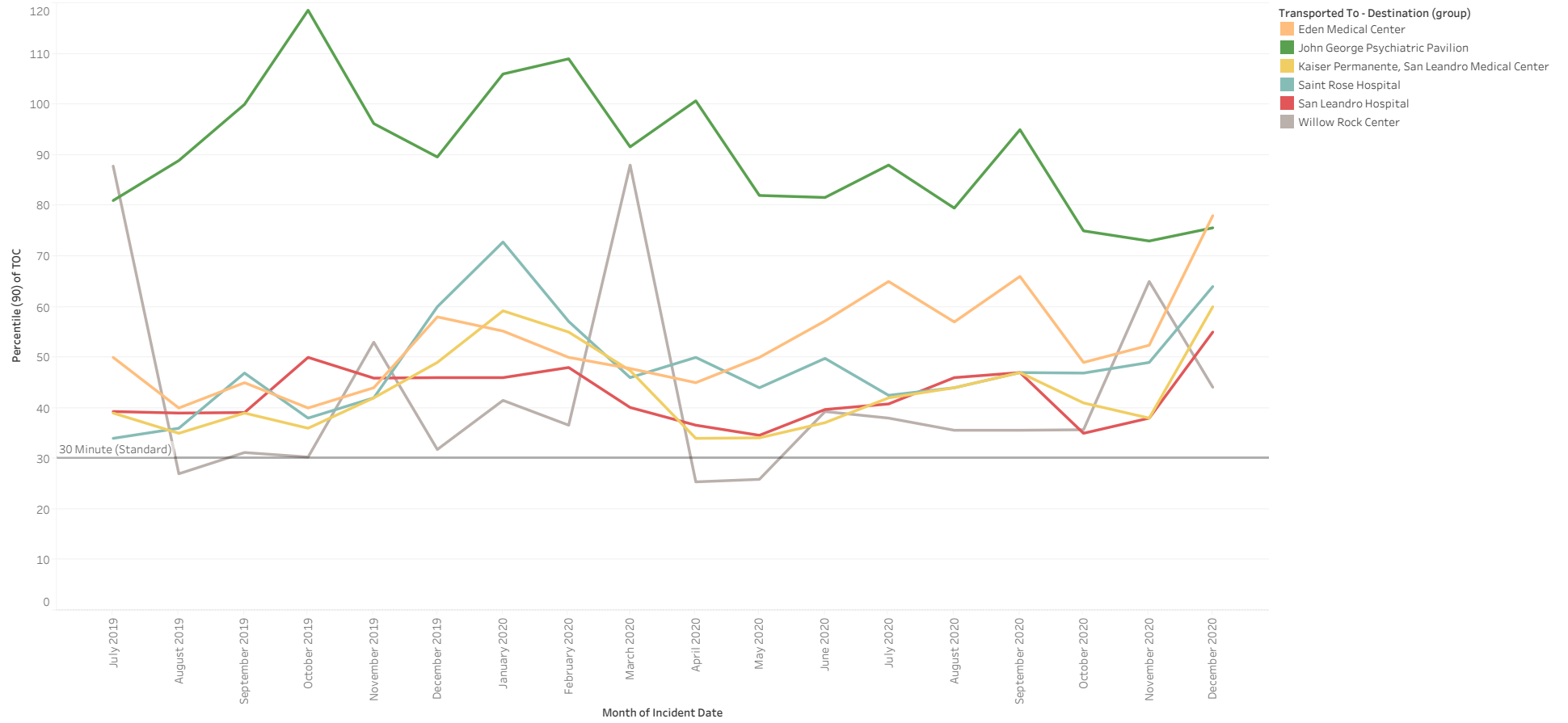


# North 90% APOT





# Mid 90% APOT



# South and East 90% APOT

