



# Provider Compliance October 2021

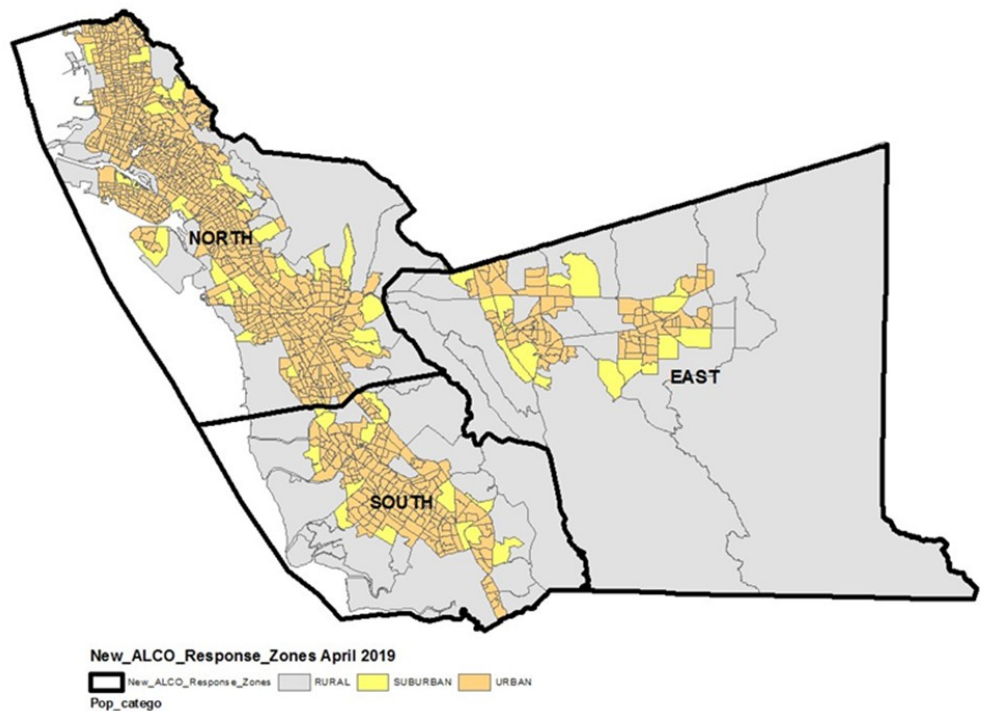
**Table of Contents**

Deployment Zones  
Pg. 1

Deployment Subzones  
Response Types  
Response Time Standards  
Pg. 2

October Compliance  
Pg. 3

Accountability  
Compliance Trending  
Pg. 4



**DEPLOYMENT ZONES**

For response time deployment planning, reporting and compliance purposes, there are three (3) Deployments Zones, and three (3) Sub-zones within each Deployment Zone based on population density. The response areas outside of the Contractor’s EOA responsibility (Alameda, Albany, Berkeley, Piedmont, and Lawrence Livermore National Laboratory) are not included in these zones.

The three Deployment Zones, delineated by the black line on the map above, are:

**North:** From the northwest County line down the bayside communities to an east/west line crossing Interstate 880 (I-880) at Industrial Boulevard, intersecting Palomares Road and continuing in the north-easterly direction to the County line.

**South:** From the line crossing I-880 at Industrial Boulevard and intersecting Palomares Road continuing southerly to Niles Canyon Road, then south-easterly along Niles Canyon Road, Paloma Way and Calaveras Road to the County line.

**East:** Commonly called the Tri-Valley, the three cities and unincorporated areas within Alameda County east of the North and South Deployment Zones.

**ALAMEDA COUNTY  
EMS AGENCY**

1000 San Leandro Blvd., Suite 200  
San Leandro, CA 94577



# ALAMEDA COUNTY EMS

# Provider Compliance October 2021

## DEPLOYMENT SUBZONES

The three subzones, differentiated on the map above by color, are:

**Metro/Urban:** Area shaded in orange that correlates to 2,000 or more residents per square mile

**Suburban:** Area shaded in light yellow that correlates to 1,000 to 1,999 residents per square mile

**Rural/Open Space:** Area shaded in gray that correlates to 0 to 999 residents per square mile

## RESPONSE TYPES

The three response types are:

**Code 3:** Medical calls requiring a lights and sirens response. Calls categorized as a Priority 1, 2 or 3 response secondary to their complaint and acuity determined through the Medical Priority Dispatch System (MPDS) utilized by Oakland Fire Dispatch and Alameda County Regional Emergency Communications Center (ACRECC). Code 2 calls upgraded by emergency personnel on scene due to an emergent patient condition are upgraded to Code 3.

**Code 2:** Medical Calls not requiring a lights and sirens response. Calls categorized as a Priority 4 response secondary to their complaint and acuity determined through the Medical Priority Dispatch System (MPDS) utilized by Oakland Fire Dispatch and Alameda County Regional Emergency Communications Center (ACRECC). Code 3 calls downgraded by emergency personnel on scene due to a non-emergent patient condition are upgraded to Code 2.

**5150:** Non-medical behavioral health responses which do not utilize lights or sirens.

## RESPONSE TIME STANDARDS

Response	Call Priority	Metro/Urban	Suburban	Rural
Code 3	Priority 1	10:00 min	14:00 min	16:00 min
	Priority 2	12:00 min	16:00 min	20:00 min
	Priority 3	14:00 min	18:00 min	20:00 min
Code 2	Priority 4	20:00 min	30:00 min	40:00 min
5150	5150	40:00 min	50:00 min	60:00 min

The expectation is that the response time standard shall be met 90% of the time for each response type in each subzone within each deployment zone.

**ALAMEDA COUNTY  
EMS AGENCY**

1000 San Leandro Blvd., Suite 200  
San Leandro, CA 94577



# Provider Compliance October 2021

## OCTOBER COMPLIANCE – FALCK

**TABLE KEY**

Percentages highlighted in  are final compliance figures that meet or exceed the standard.

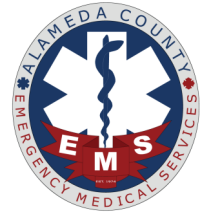
Percentages highlighted in  are final compliance figures that are below the standard.

Percentages that are not highlighted and have asterisks (\*) are not final compliance figures because a zone must have at least 100 calls in order for the final calculation to occur. Calls will carry over to the next month until the threshold of at least 100 calls is met.

Zone	Response Type	# Responses	# Late Response	Compliance %
East Metro/Urban	Code 2	307	14	95.44%
	Code 3	611	95	84.45%
	5150	142	11	92.25%
East Rural	Code 2	168	4	97.62%
	Code 3	184	16	91.30%
	5150	51	0	100.00% *
East Suburban	Code 2	122	0	100.00%
	Code 3	131	12	90.84%
	5150	50	2	96.00% *
North Metro/Urban	Code 2	2820	221	92.16%
	Code 3	4641	1064	77.07%
	5150	438	8	98.17%
North Rural	Code 2	99	0	100.00% *
	Code 3	277	19	93.14%
	5150	85	1	98.82% *
North Suburban	Code 2	180	2	98.89%
	Code 3	221	22	90.05%
	5150	81	2	97.53% *
South Metro/Urban	Code 2	504	36	92.86%
	Code 3	1007	171	83.02%
	5150	142	5	96.48%
South Rural	Code 2	82	0	100.00% *
	Code 3	194	10	94.85%
	5150	35	0	100.00% *
South Suburban	Code 2	76	0	100.00% *
	Code 3	63	2	96.83% *
	5150	18	0	100.00% *

**ALAMEDA COUNTY  
EMS AGENCY**

1000 San Leandro Blvd., Suite 200  
San Leandro, CA 94577



# ALAMEDA COUNTY EMS

# Provider Compliance October 2021

## ACCOUNTABILITY

Provider is held accountable for performance as well as the subsequent penalties and fines that are levied pursuant to the performance metrics and penalty structures within their Agreement.

In addition to the compliance percentages noted in the preceding tables. Penalties are assessed for outliers, which are prolonged responses which equal or exceed 250% of the response time standard.

Failure to meet the performance measures contained within their Agreement will result in the implementation of a performance improvement plan in order to bring provider into compliance.

Subsequent deviations in performance, as identified in the Agreement, results in escalating penalties and prolonged underperformance could result in a material breach of the provider Agreement.

**ALAMEDA COUNTY  
EMS AGENCY**

1000 San Leandro Blvd., Suite 200  
San Leandro, CA 94577

## COMPLIANCE TRENDING

