



Provider Compliance June 2020

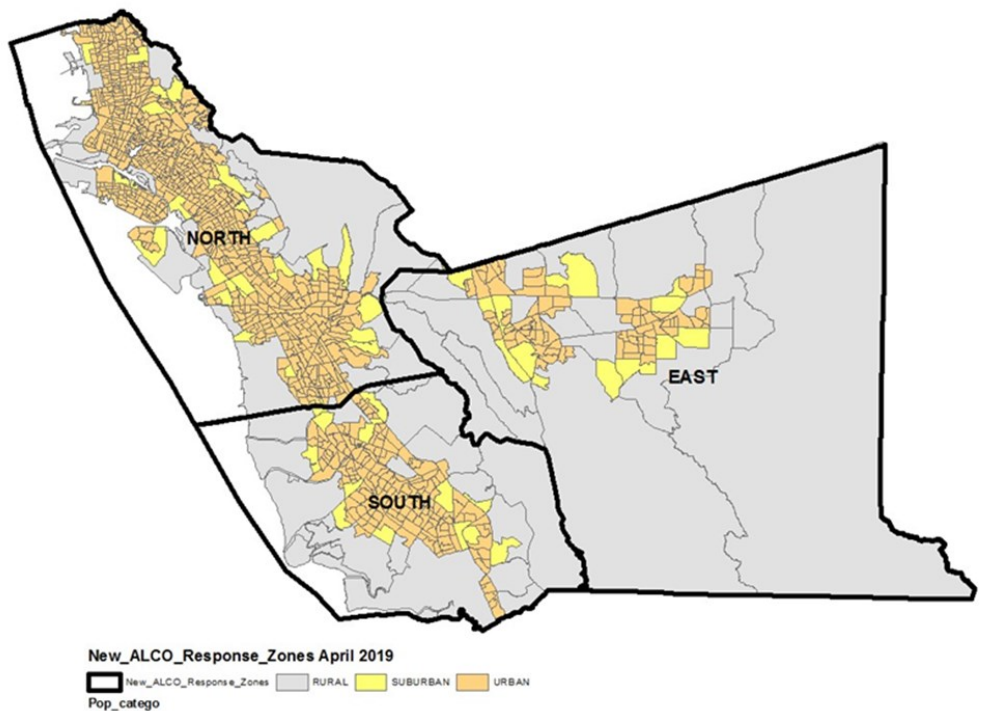
Table of Contents

Deployment Zones
Pg. 1

Deployment Subzones
Response Types
Response Time Standards
Pg. 2

October Compliance
Pg. 3

Accountability
Compliance Trending
Pg. 4



DEPLOYMENT ZONES

For response time deployment planning, reporting and compliance purposes, there are three (3) Deployments Zones, and three (3) Sub-zones within each Deployment Zone based on population density. The response areas outside of the Contractor’s EOA responsibility (Alameda, Albany, Berkeley, Piedmont, and Lawrence Livermore National Laboratory) are not included in these zones.

The three Deployment Zones, delineated by the black line on the map above, are:

North: From the northwest County line down the bayside communities to an east/west line crossing Interstate 880 (I-880) at Industrial Boulevard, intersecting Palomares Road and continuing in the north-easterly direction to the County line.

South: From the line crossing I-880 at Industrial Boulevard and intersecting Palomares Road continuing southerly to Niles Canyon Road, then south-easterly along Niles Canyon Road, Paloma Way and Calaveras Road to the County line.

East: Commonly called the Tri-Valley, the three cities and unincorporated areas within Alameda County east of the North and South Deployment Zones.

**ALAMEDA COUNTY
EMS AGENCY**

1000 San Leandro Blvd., Suite 200
San Leandro, CA 94577



ALAMEDA COUNTY EMS

Provider Compliance June 2020

DEPLOYMENT SUBZONES

The three subzones, differentiated on the map above by color, are:

Metro/Urban: Area shaded in orange that correlates to 2,000 or more residents per square mile

Suburban: Area shaded in light yellow that correlates to 1,000 to 1,999 residents per square mile

Rural/Open Space: Area shaded in gray that correlates to 0 to 999 residents per square mile

RESPONSE TYPES

The three response types are:

Code 3: Medical calls requiring a lights and sirens response. Calls categorized as a Priority 1, 2 or 3 response secondary to their complaint and acuity determined through the Medical Priority Dispatch System (MPDS) utilized by Oakland Fire Dispatch and Alameda County Regional Emergency Communications Center (ACRECC). Code 2 calls upgraded by emergency personnel on scene due to an emergent patient condition are upgraded to Code 3.

Code 2: Medical Calls not requiring a lights and sirens response. Calls categorized as a Priority 4 response secondary to their complaint and acuity determined through the Medical Priority Dispatch System (MPDS) utilized by Oakland Fire Dispatch and Alameda County Regional Emergency Communications Center (ACRECC). Code 3 calls downgraded by emergency personnel on scene due to a non-emergent patient condition are upgraded to Code 2.

5150: Non-medical behavioral health responses which do not utilize lights or sirens.

RESPONSE TIME STANDARDS

Response	Call Priority	Metro/Urban	Suburban	Rural
Code 3	Priority 1	10:00 min	14:00 min	16:00 min
	Priority 2	12:00 min	16:00 min	20:00 min
	Priority 3	14:00 min	18:00 min	20:00 min
Code 2	Priority 4	20:00 min	30:00 min	40:00 min
5150	5150	40:00 min	50:00 min	60:00 min

The expectation is that the response time standard shall be met 90% of the time for each response type in each subzone within each deployment zone.

**ALAMEDA COUNTY
EMS AGENCY**

1000 San Leandro Blvd., Suite 200
San Leandro, CA 94577



ALAMEDA COUNTY EMS

Provider Compliance June 2020

JUNE COMPLIANCE – FALCK

Zone	Response Type	# Responses	# Late Response	Compliance %
East Metro/Urban	Code 2	230	5	97.83%
	Code 3	412	19	95.39%
	5150	43	0	100.00% *
East Rural	Code 2	157	1	99.36%
	Code 3	155	13	91.61%
	5150	50	0	100.00% *
East Suburban	Code 2	123	0	100.00%
	Code 3	103	1	99.03%
	5150	21	0	100.00% *
North Metro/Urban	Code 2	2761	94	96.60%
	Code 3	3945	392	90.06%
	5150	467	2	99.57%
North Rural	Code 2	100	0	100.00%
	Code 3	214	7	96.73%
	5150	110	0	100.00%
North Suburban	Code 2	87	1	98.85% *
	Code 3	143	9	93.71%
	5150	57	1	98.25% *
South Metro/Urban	Code 2	417	6	98.56%
	Code 3	716	57	92.04%
	5150	138	1	99.28%
South Rural	Code 2	66	0	100.00% *
	Code 3	109	4	96.33%
	5150	10	0	100.00% *
South Suburban	Code 2	84	0	100.00% *
	Code 3	155	6	96.13%
	5150	96	1	98.96% *

TABLE KEY

Percentages highlighted in are final compliance figures that meet or exceed the standard.

Percentages highlighted in are final compliance figures that are below the standard.

Percentages that are not highlighted and have asterisks (*) are not final compliance figures because a zone must have at least 100 calls in order for the final calculation to occur. Calls will carry over to the next month until the threshold of at least 100 calls is met.

**ALAMEDA COUNTY
EMS AGENCY**

1000 San Leandro Blvd., Suite 200
San Leandro, CA 94577



ALAMEDA COUNTY EMS

Provider Compliance June 2020

ACCOUNTABILITY

Provider is held accountable for performance as well as the subsequent penalties and fines that are levied pursuant to the performance metrics and penalty structures within their Agreement.

In addition to the compliance percentages noted in the preceding tables. Penalties are assessed for outliers, which are prolonged responses which equal or exceed 250% of the response time standard.

Failure to meet the performance measures contained within their Agreement will result in the implementation of a performance improvement plan in order to bring provider into compliance.

Subsequent deviations in performance, as identified in the Agreement, results in escalating penalties and prolonged underperformance could result in a material breach of the provider Agreement.

ALAMEDA COUNTY EMS AGENCY

1000 San Leandro Blvd., Suite 200
San Leandro, CA 94577

COMPLIANCE TRENDING

