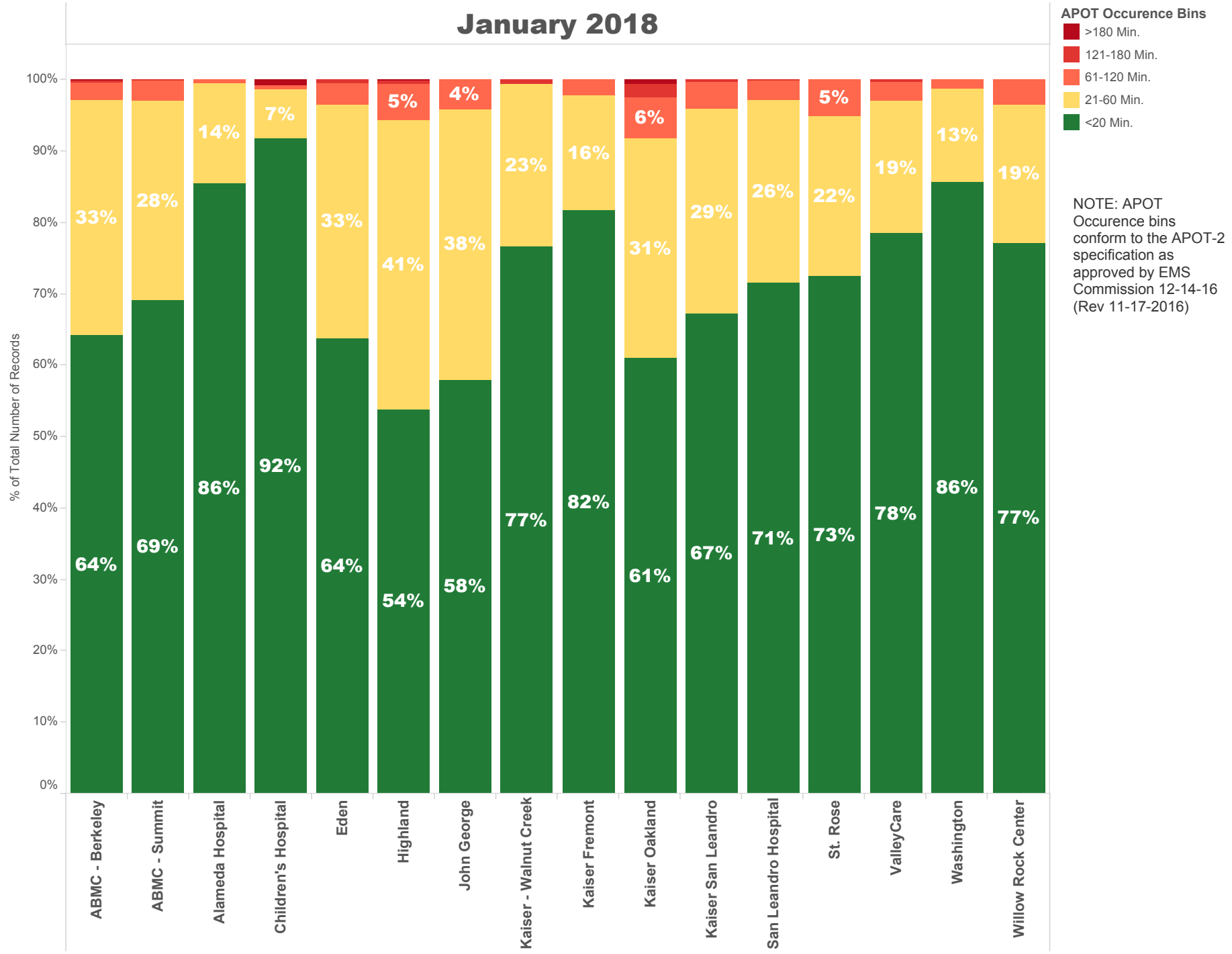


January 2018

NOTE: The **90th percentile** is the value for which 90% of the data points are smaller.

Destination Facility	Rank (Composite)	Avg. TOC	90th Percentile TOC	APOD >60 min	APOD % of N	N = Number of Transports
Kaiser - Walnut Creek	2	16 min.	26.0 min.	1	1%	180
ABMC - Berkeley	5	20 min.	40.0 min.	16	3%	564
John George	10	22 min.	47.0 min.	18	4%	436
Alameda Hospital	1	12 min.	24.0 min.	1	0%	222
Children's Hospital	2	12 min.	17.4 min.	2	1%	147
San Leandro Hospital	4	18 min.	35.0 min.	23	3%	806
Washington	2	14 min.	24.0 min.	12	1%	971
Kaiser Fremont	3	16 min.	31.7 min.	12	2%	514
ABMC - Summit	7	19 min.	39.0 min.	40	3%	1,307
ValleyCare	4	16 min.	34.8 min.	16	3%	553
Kaiser Oakland	12	26 min.	56.0 min.	62	8%	743
Kaiser San Leandro	10	21 min.	45.0 min.	32	4%	771
Eden	8	21 min.	44.0 min.	33	4%	941
Highland	11	25 min.	48.9 min.	74	6%	1,232
St. Rose	9	20 min.	42.0 min.	23	5%	451
Willow Rock Center	6	17 min.	33.2 min.	2	4%	57

January 2018



January 2018

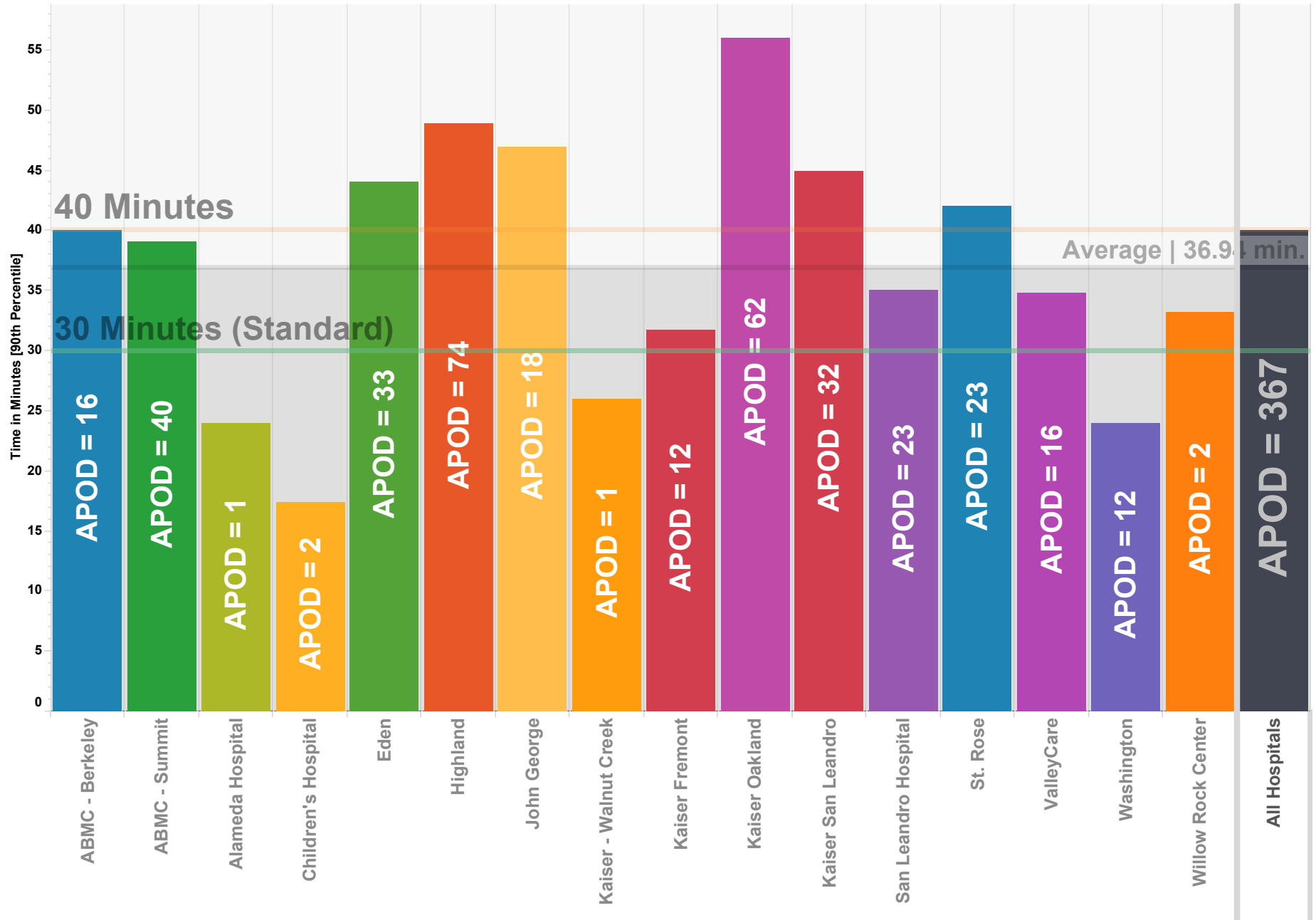
	ABMC - Berkeley	ABMC - Summit	Alameda Hospital	Children's Hospital	Eden	Highland	John George	Kaiser - Walnut Creek	Kaiser Fremont	Kaiser Oakland	Kaiser San Leandro	San Leandro Hospital	St. Rose	ValleyCare	Washington	Willow Rock Center
APOT Occurrence Bins																
21-60 Min.	33.0% 186	27.9% 364	14.0% 31	6.8% 10	32.7% 308	40.5% 499	37.8% 165	22.8% 41	16.1% 83	30.8% 229	28.8% 222	25.7% 207	22.4% 101	18.6% 103	13.1% 127	19.3% 11
61-120 Min.	2.5% 14	2.8% 37	0.5% 1	0.7% 1	3.1% 29	5.0% 61	4.1% 18		2.1% 11	5.7% 42	3.8% 29	2.7% 22	5.1% 23	2.7% 15	1.2% 12	3.5% 2
121-180 Min.	0.2% 1	0.2% 2			0.4% 4	0.5% 6		0.6% 1		2.0% 15	0.3% 2	0.1% 1		0.2% 1		
<20 Min.	64.2% 362	69.2% 904	85.6% 190	91.8% 135	63.8% 600	53.9% 664	58.0% 253	76.7% 138	81.7% 420	61.0% 453	67.2% 518	71.5% 576	72.5% 327	78.5% 434	85.7% 832	77.2% 44
>180 Min.	0.2% 1			0.7% 1		0.2% 2				0.5% 4						

NOTE: APOT Occurrence bins conform to the APOT-2 specification as approved by EMS Commission 12-14-16 (Rev 11-17-2016)

Ambulance Patient Offload Times (APOT) January 2018

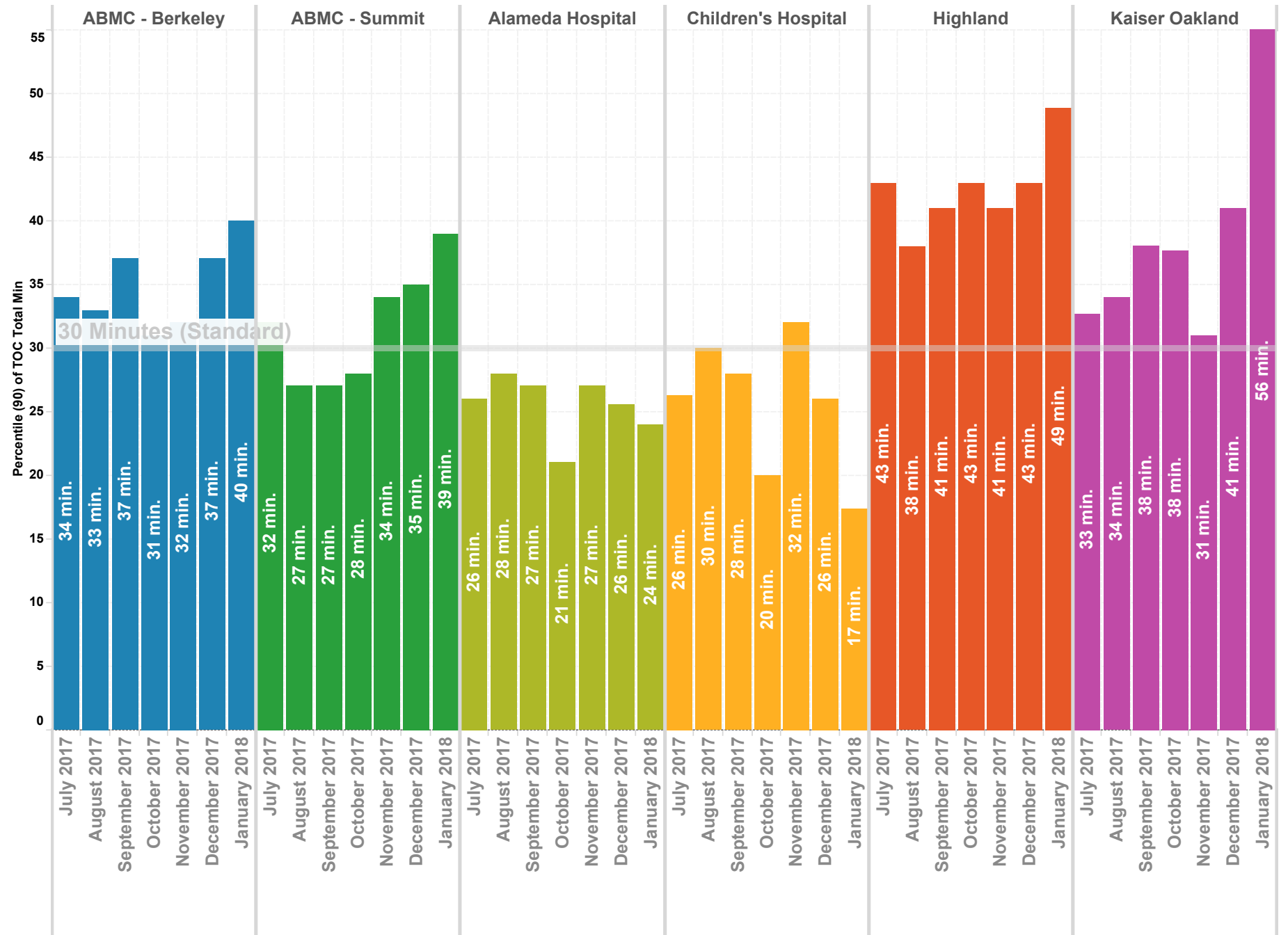
90th Percentile

NOTE: The **90th percentile** is the value for which 90% of the data points are smaller.



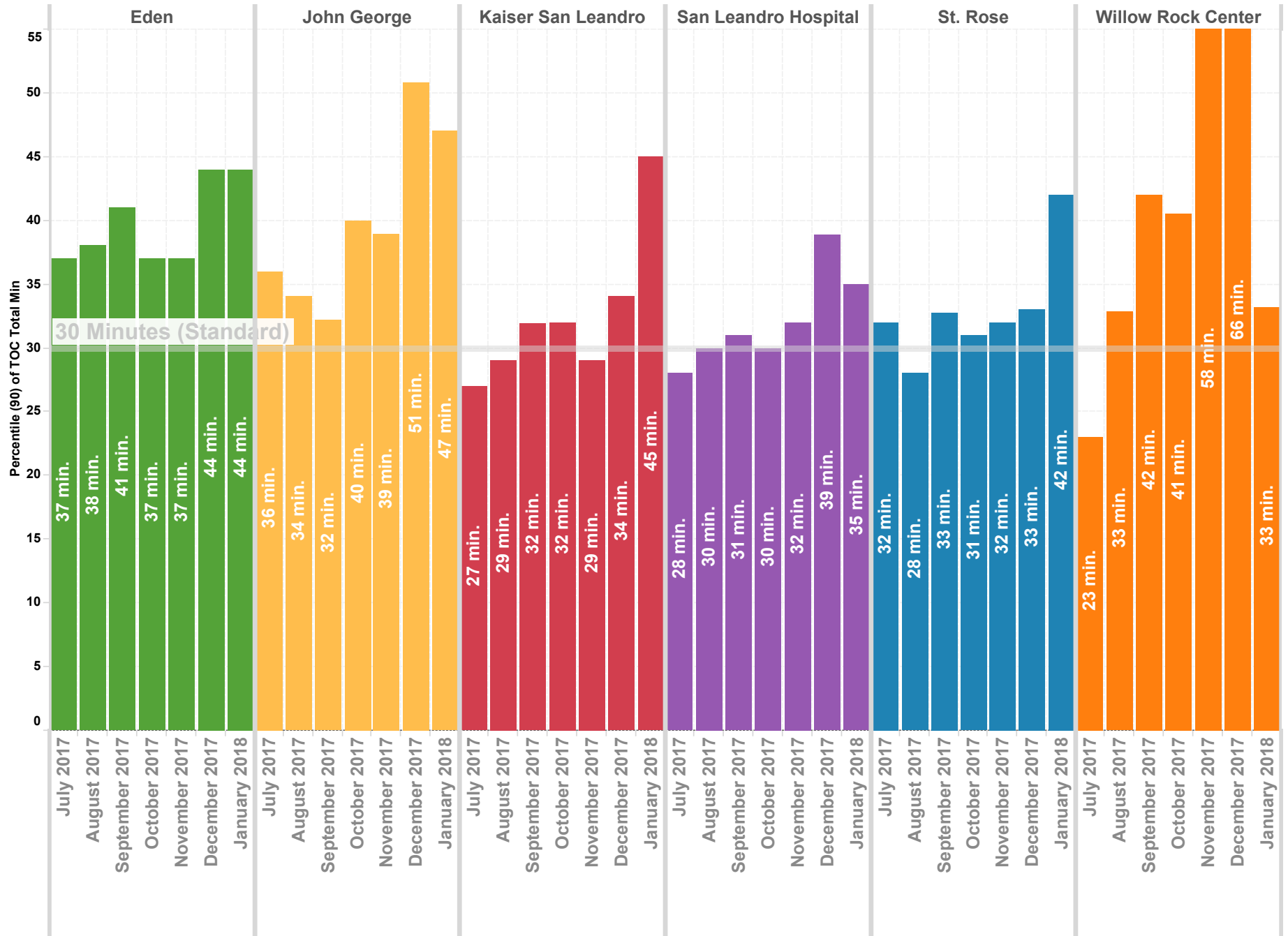
Wall Times (TOC) 2016 By Month - North County

Previous 8 Months | 90th Percentile



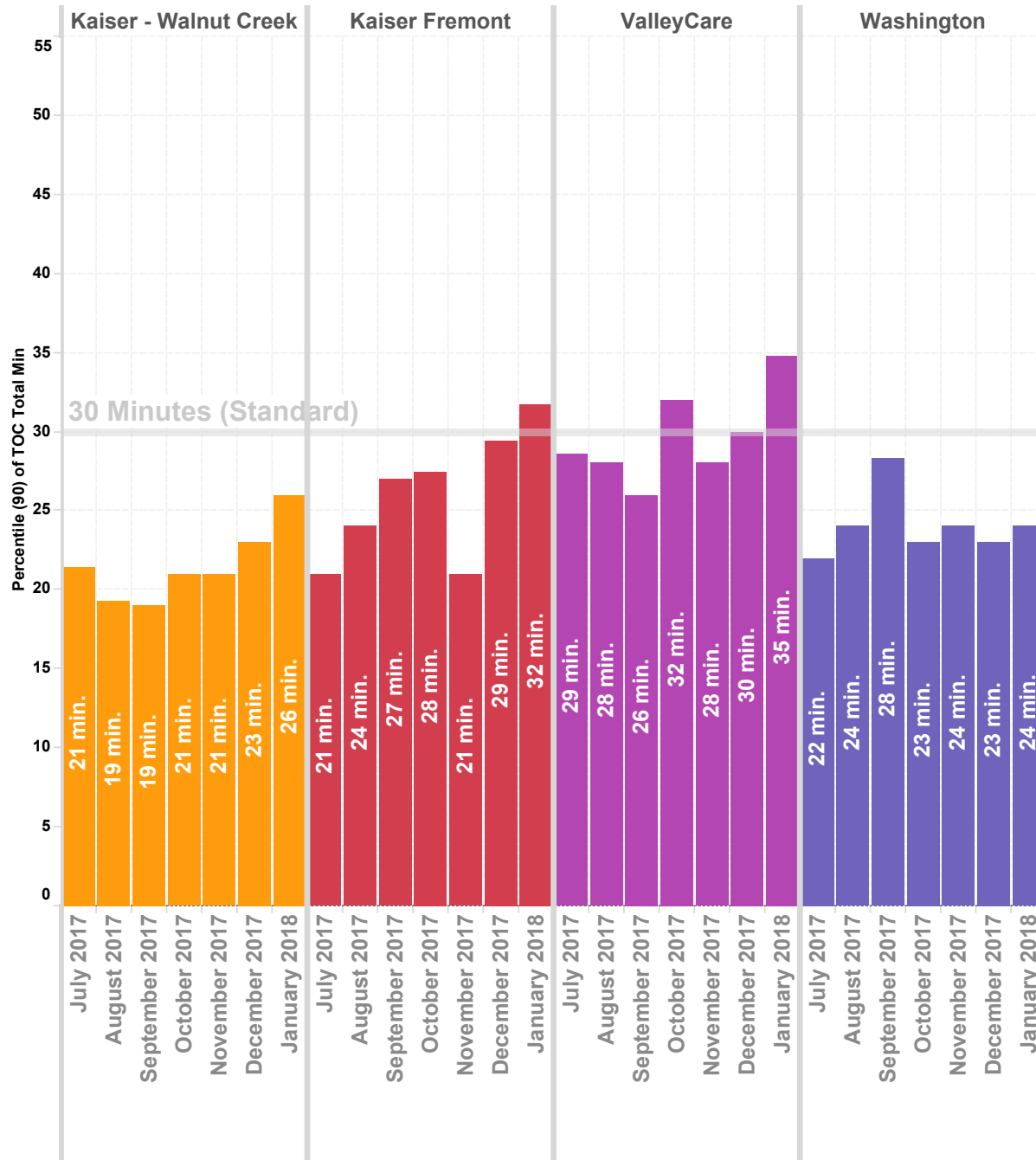
Wall Times (TOC) 2016 By Month - Mid County

Previous 8 Months | 90th Percentile



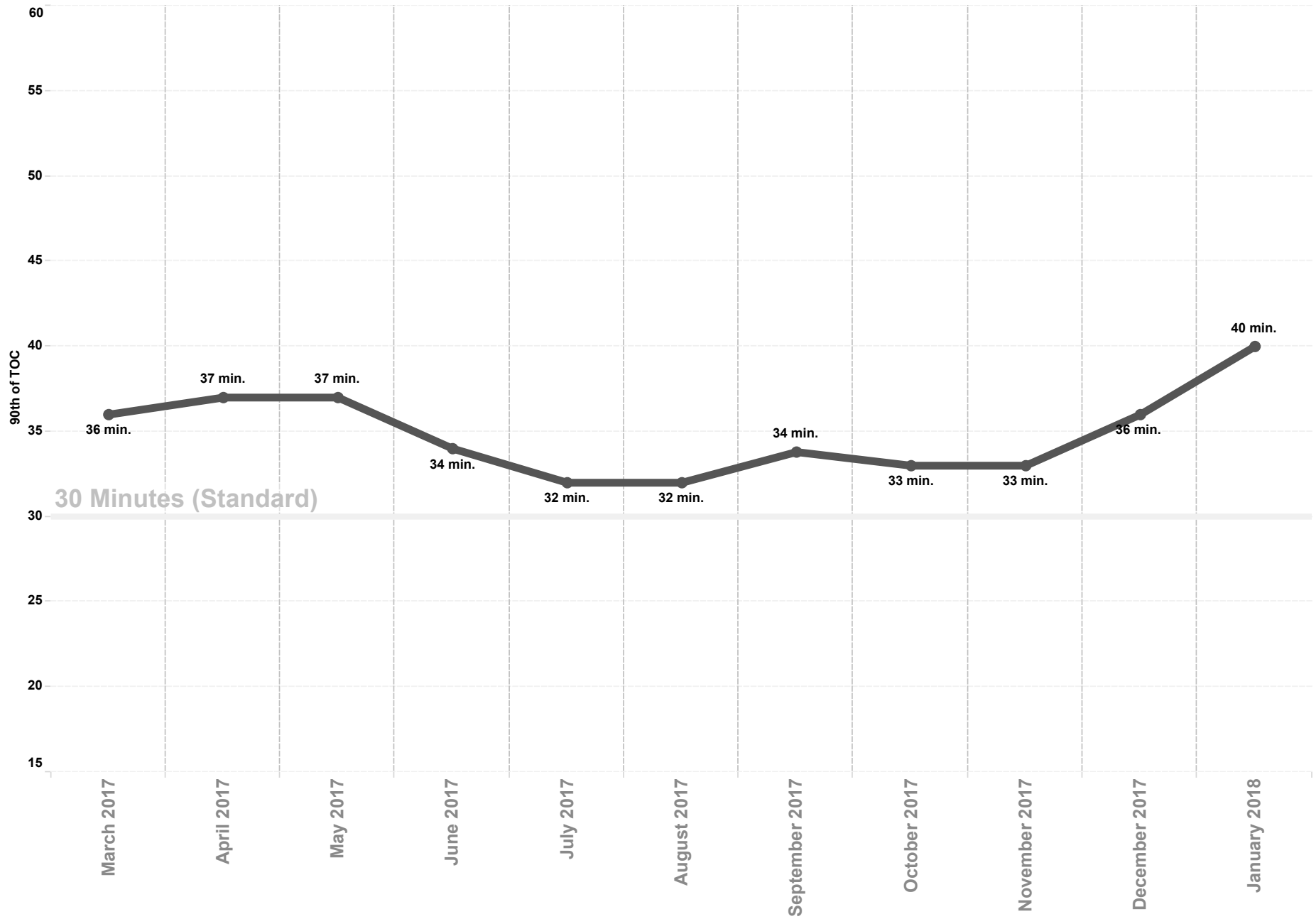
Wall Times (TOC) 2016 By Month - East County & South County

Previous 8 Months | 90th Percentile



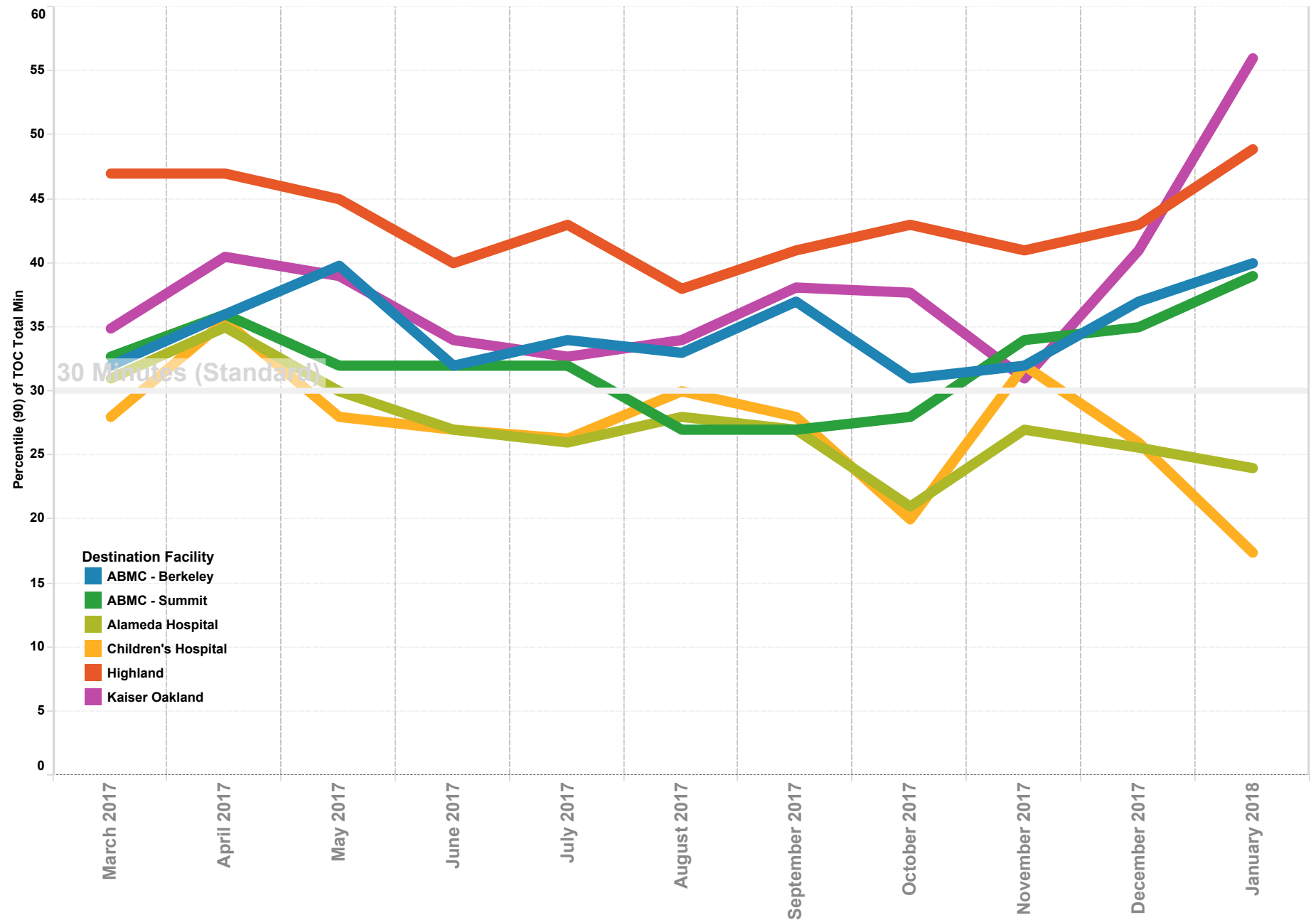
APOT All Hospitals

Previous 12 Months | 90th Percentile



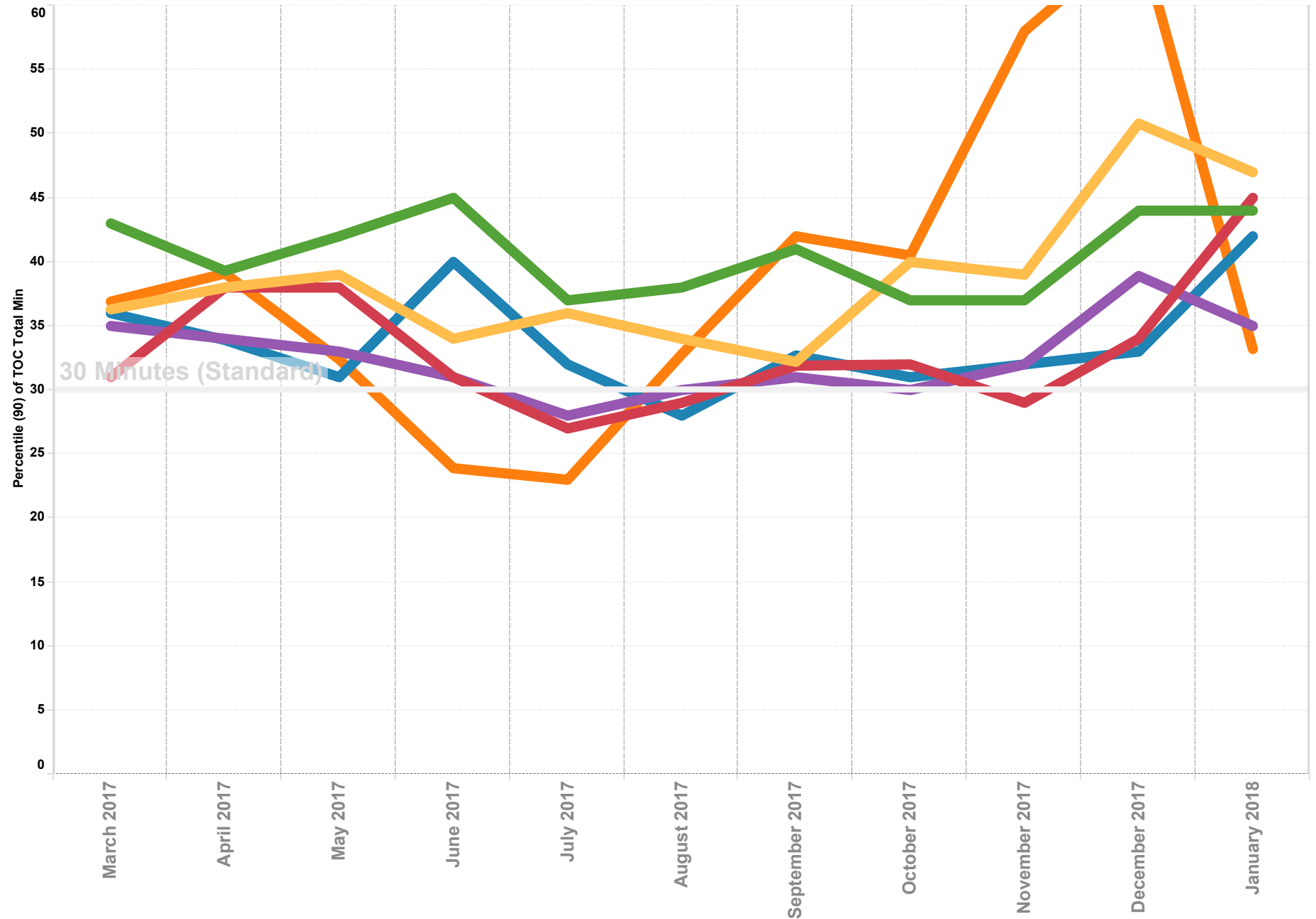
APOT North County

Previous 12 Months | 90th Percentile



APOT Mid County

Previous 12 Months | 90th Percentile



APOT South and East County

Previous 12 Months | 90th Percentile

