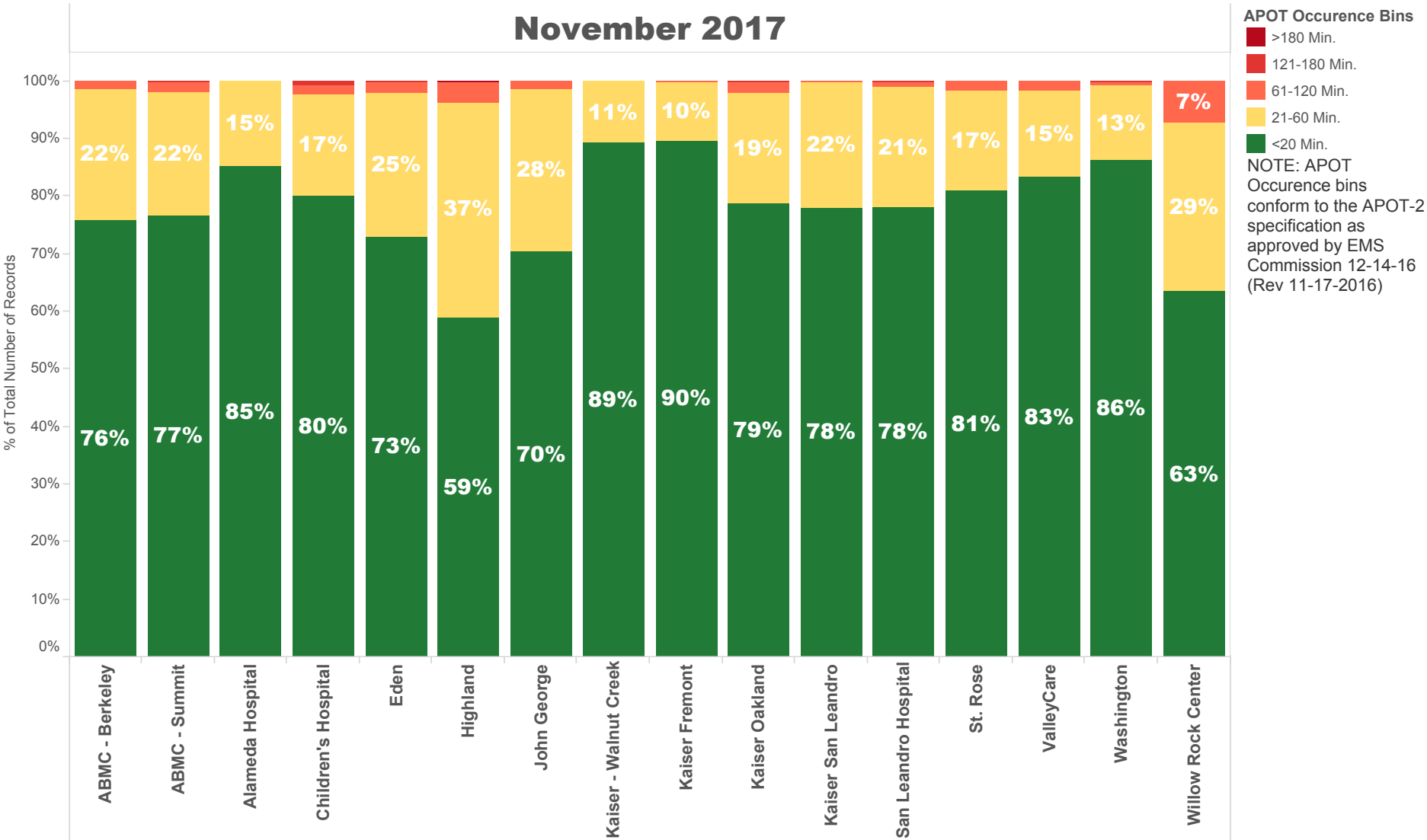


November 2017

NOTE: The 90th percentile is the value for which 90% of the data points are smaller.

Destination Facility	Rank (Composite)	Avg. TOC	90th Percentile TOC	APOD >60 min	APOD % of N	N = Number of Transports
Kaiser - Walnut Creek	1	12 min.	21.0 min.	0	0%	149
ABMC - Berkeley	8	17 min.	32.0 min.	7	2%	459
John George	9	17 min.	37.9 min.	5	2%	332
Alameda Hospital	3	12 min.	27.0 min.	0	0%	135
Children's Hospital	9	14 min.	30.0 min.	3	2%	121
San Leandro Hospital	7	15 min.	31.4 min.	7	1%	587
Washington	4	13 min.	24.0 min.	5	1%	732
Kaiser Fremont	2	12 min.	21.0 min.	1	0%	386
ABMC - Summit	10	16 min.	34.0 min.	18	2%	958
ValleyCare	6	14 min.	27.3 min.	7	2%	428
Kaiser Oakland	10	17 min.	31.0 min.	14	3%	545
Kaiser San Leandro	5	16 min.	28.8 min.	2	0%	613
Eden	11	18 min.	37.0 min.	19	2%	821
Highland	12	22 min.	41.0 min.	40	4%	1,040
St. Rose	8	16 min.	31.0 min.	6	2%	341
Willow Rock Center	13	22 min.	41.0 min.	3	7%	41

November 2017



November 2017

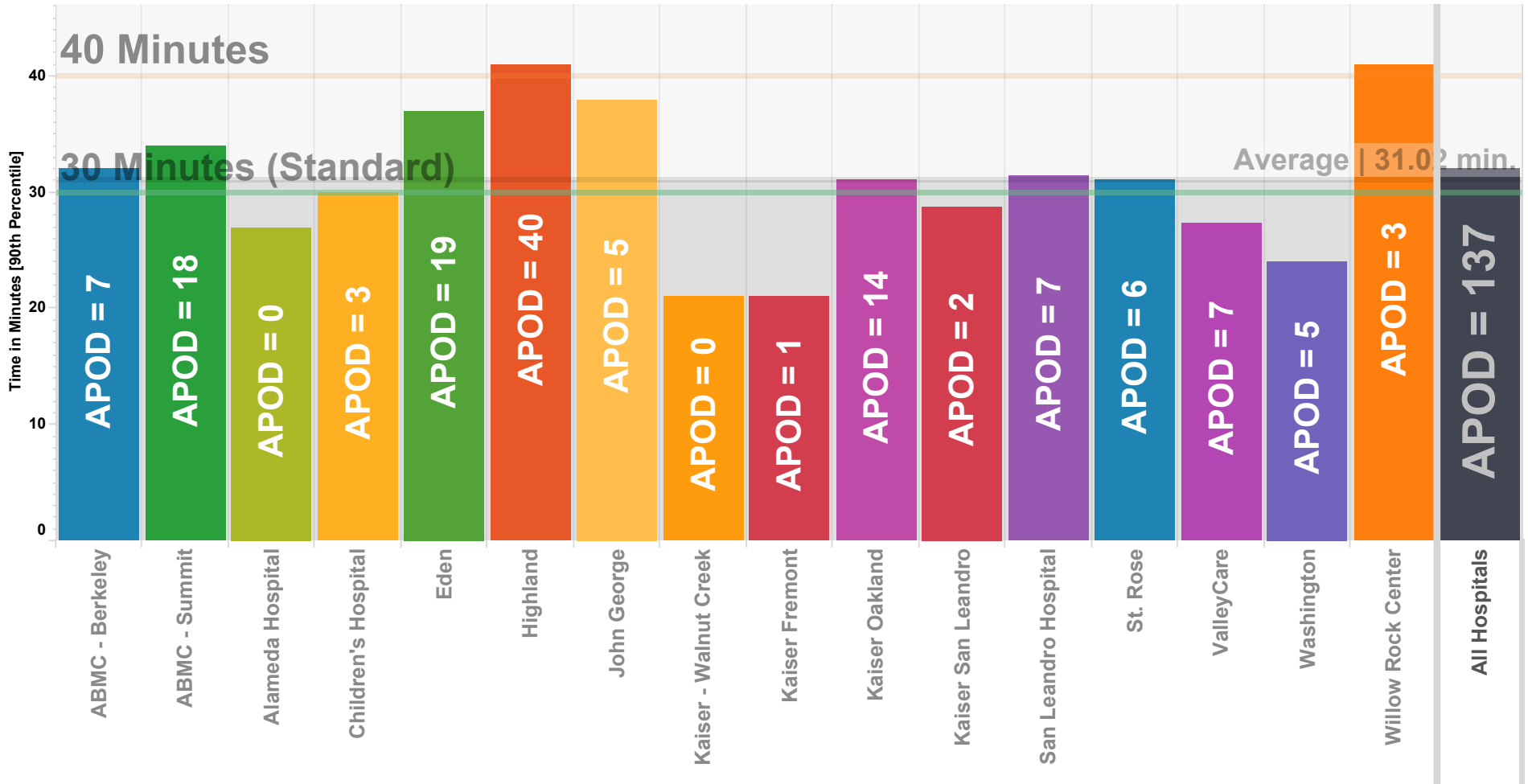
	ABMC - Berkeley	ABMC - Summit	Alameda Hospital	Children's Hospital	Eden	Highland	John George	Kaiser - Walnut Creek	Kaiser Fremont	Kaiser Oakland	Kaiser San Leandro	San Leandro Hospital	St. Rose	ValleyCare	Washington	Willow Rock Center
APOT Occurrence Bins																
21-60 Min.	22.4% 103	21.5% 206	14.8% 20	17.4% 21	25.0% 205	37.4% 389	28.0% 93	10.7% 16	10.1% 39	19.1% 104	21.7% 133	21.0% 123	17.3% 59	15.0% 64	13.1% 96	29.3% 12
61-120 Min.	1.5% 7	1.8% 17		1.7% 2	1.9% 16	3.5% 36	1.5% 5		0.3% 1	2.0% 11	0.3% 2	0.9% 5	1.8% 6	1.6% 7	0.5% 4	7.3% 3
121-180 Min.		0.1% 1		0.8% 1	0.1% 1	0.1% 1				0.2% 1		0.2% 1			0.1% 1	
<20 Min.	76.0% 349	76.6% 734	85.2% 115	80.2% 97	73.0% 599	58.9% 613	70.5% 234	89.3% 133	89.6% 346	78.7% 429	78.0% 478	78.0% 458	80.9% 276	83.4% 357	86.2% 631	63.4% 26
>180 Min.						0.1% 1										

NOTE: APOT Occurrence bins conform to the APOT-2 specification as approved by EMS Commission 12-14-16 (Rev 11-17-2016)

Ambulance Patient Offload Times (APOT) November 2017

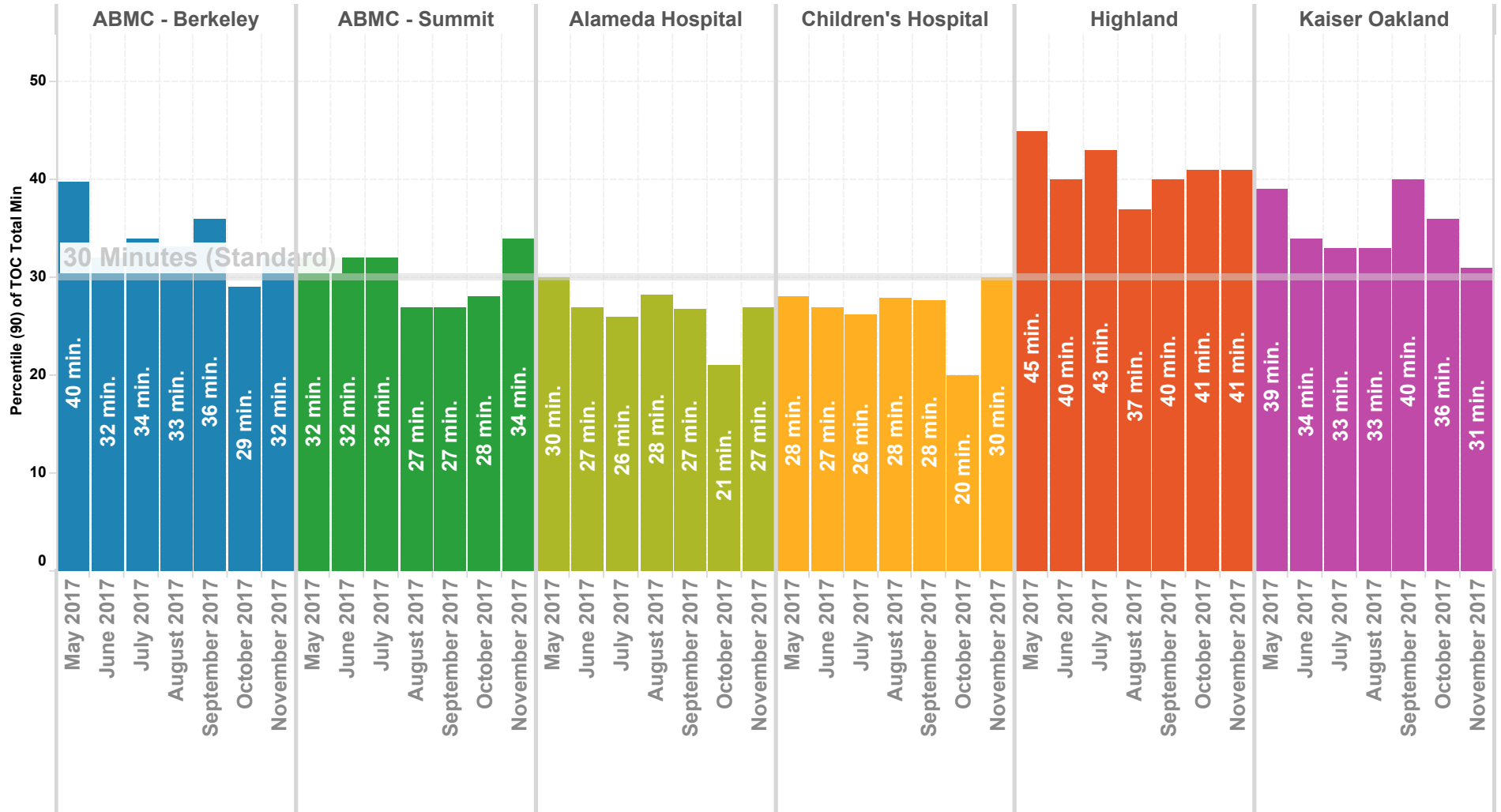
90th Percentile

NOTE: The **90th percentile** is the value for which 90% of the data points are smaller.



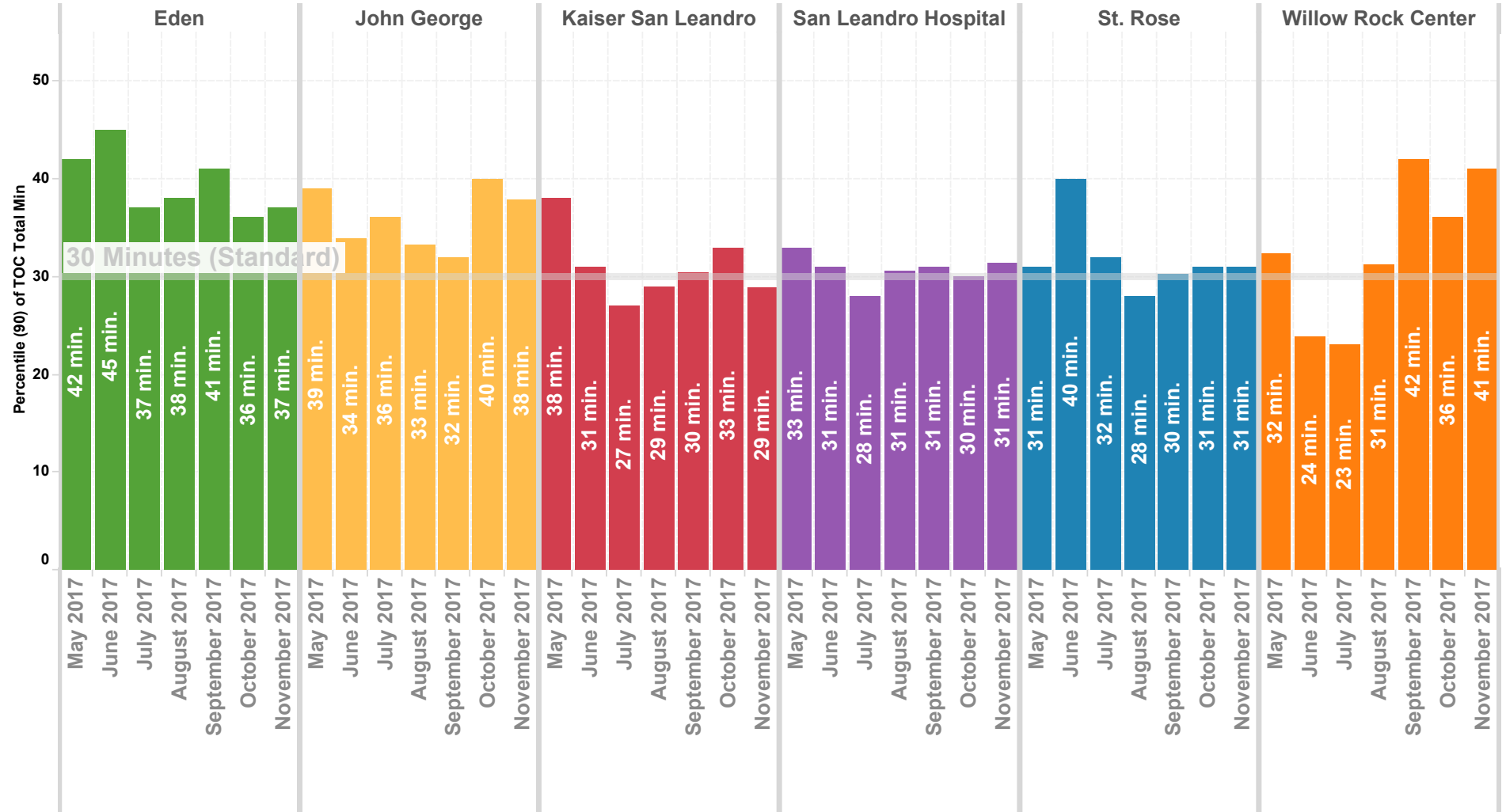
Wall Times (TOC) 2016 By Month - North County

Previous 8 Months | 90th Percentile



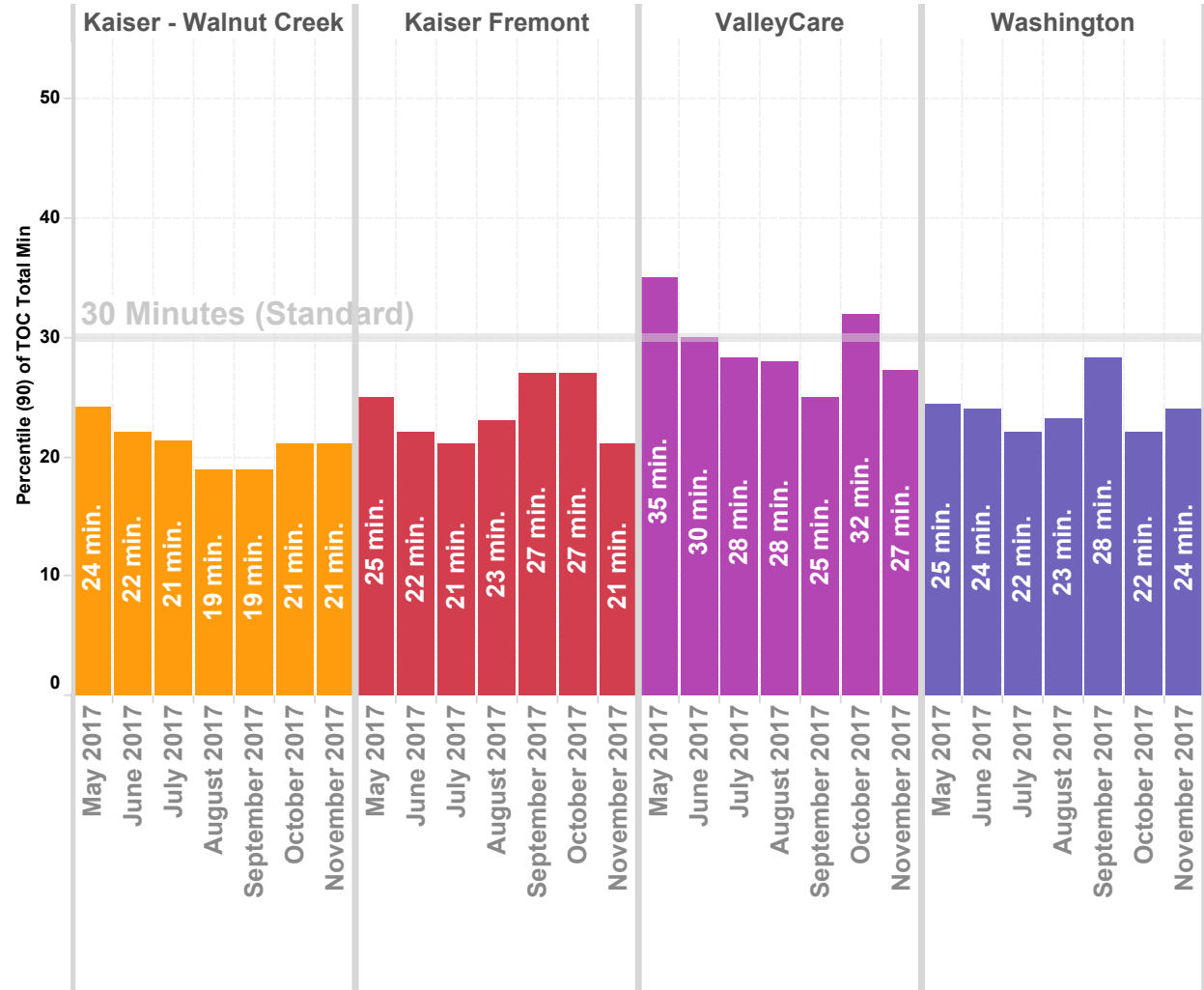
Wall Times (TOC) 2016 By Month - Mid County

Previous 8 Months | 90th Percentile



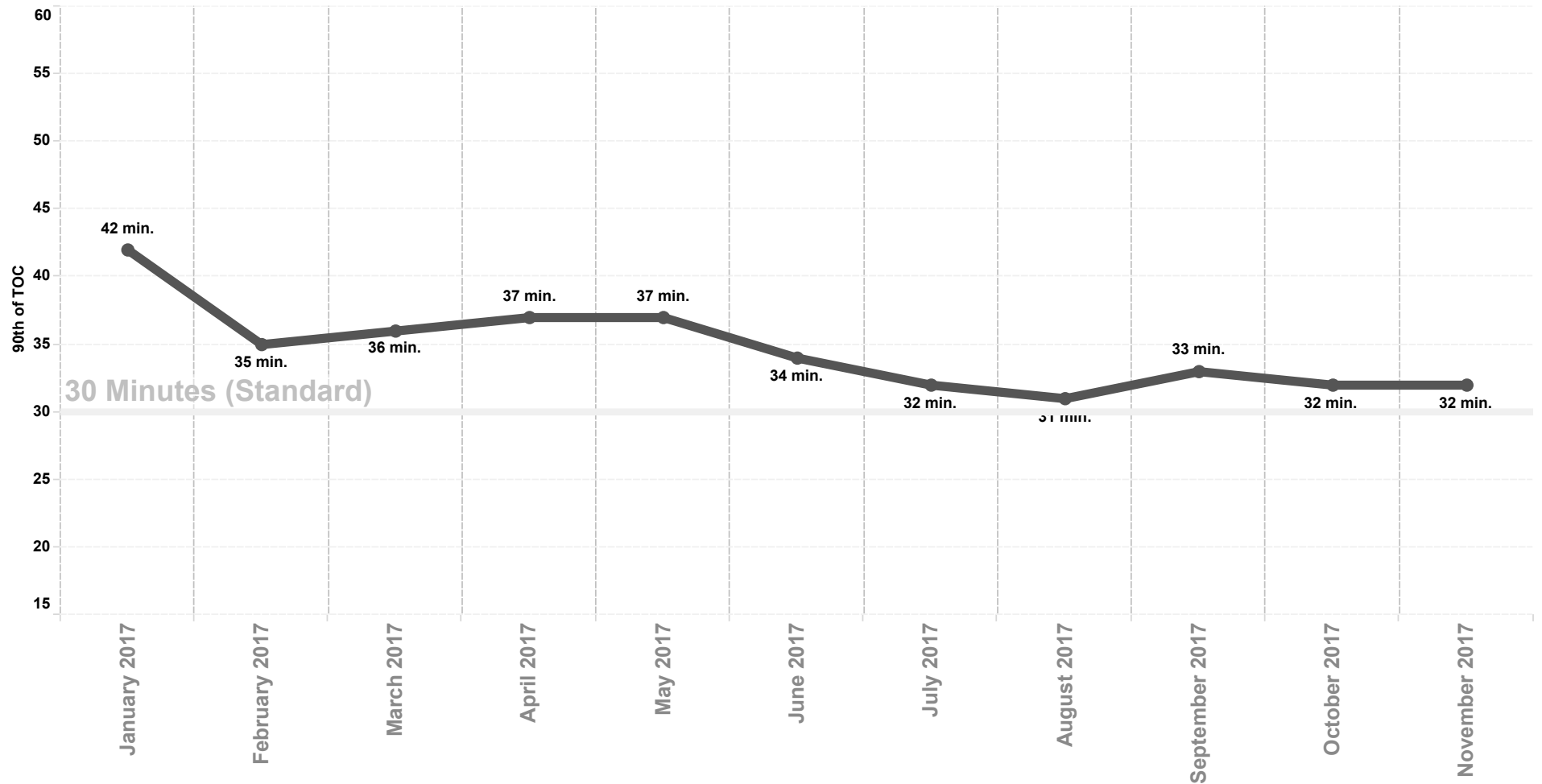
Wall Times (TOC) 2016 By Month - East County & South County

Previous 8 Months | 90th Percentile



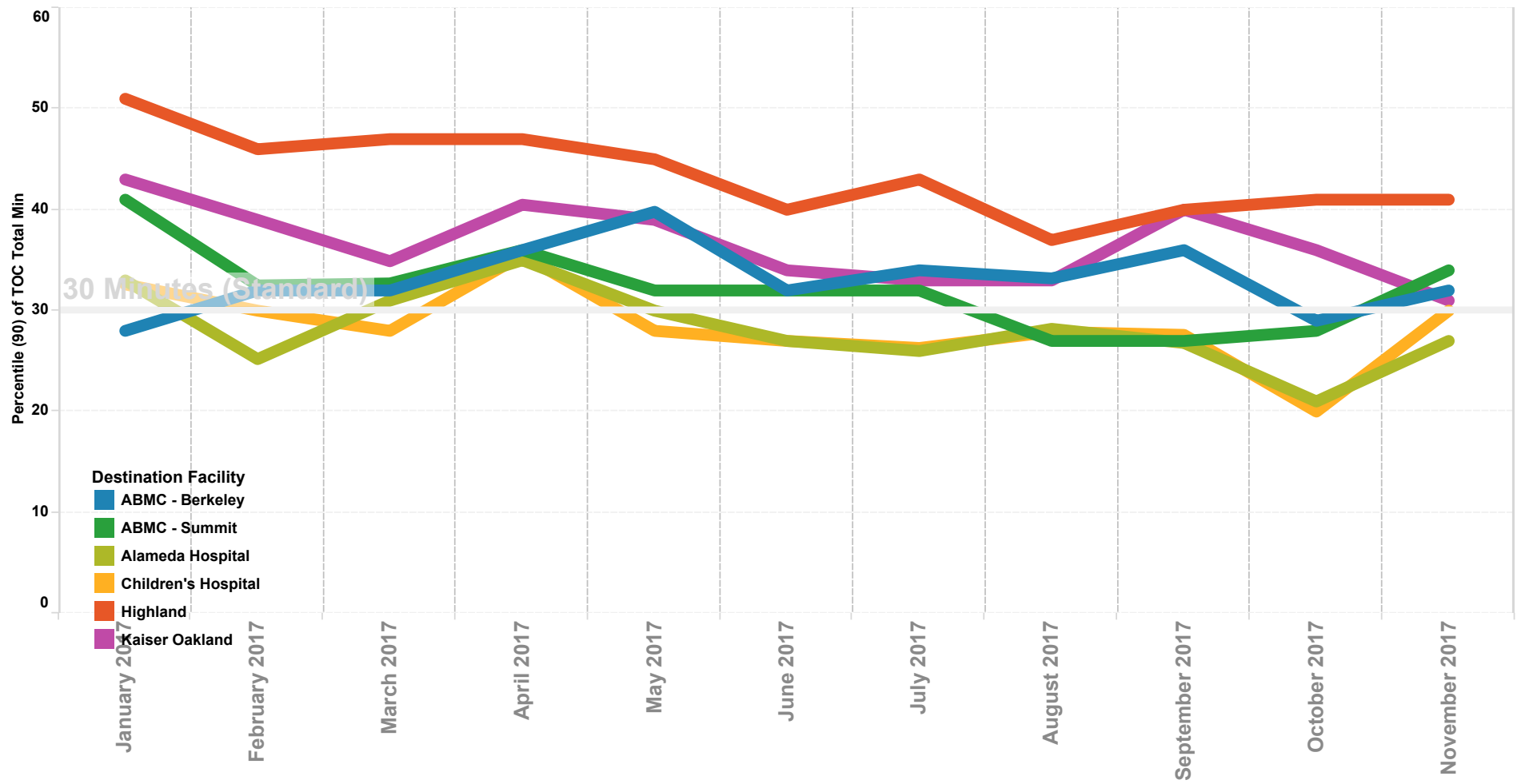
APOT All Hospitals

Previous 12 Months | 90th Percentile



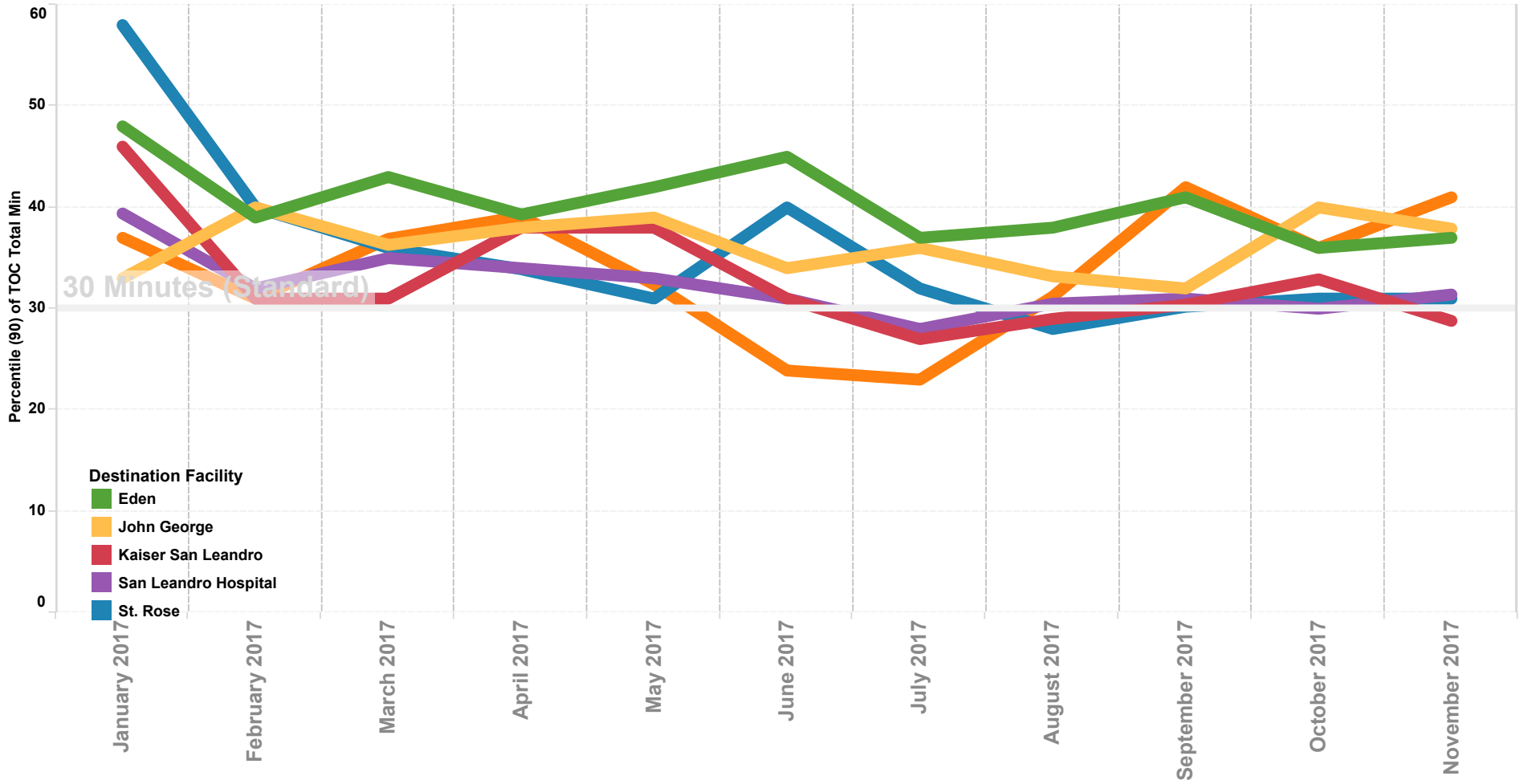
APOT North County

Previous 12 Months | 90th Percentile



APOT Mid County

Previous 12 Months | 90th Percentile



APOT South and East County

Previous 12 Months | 90th Percentile

