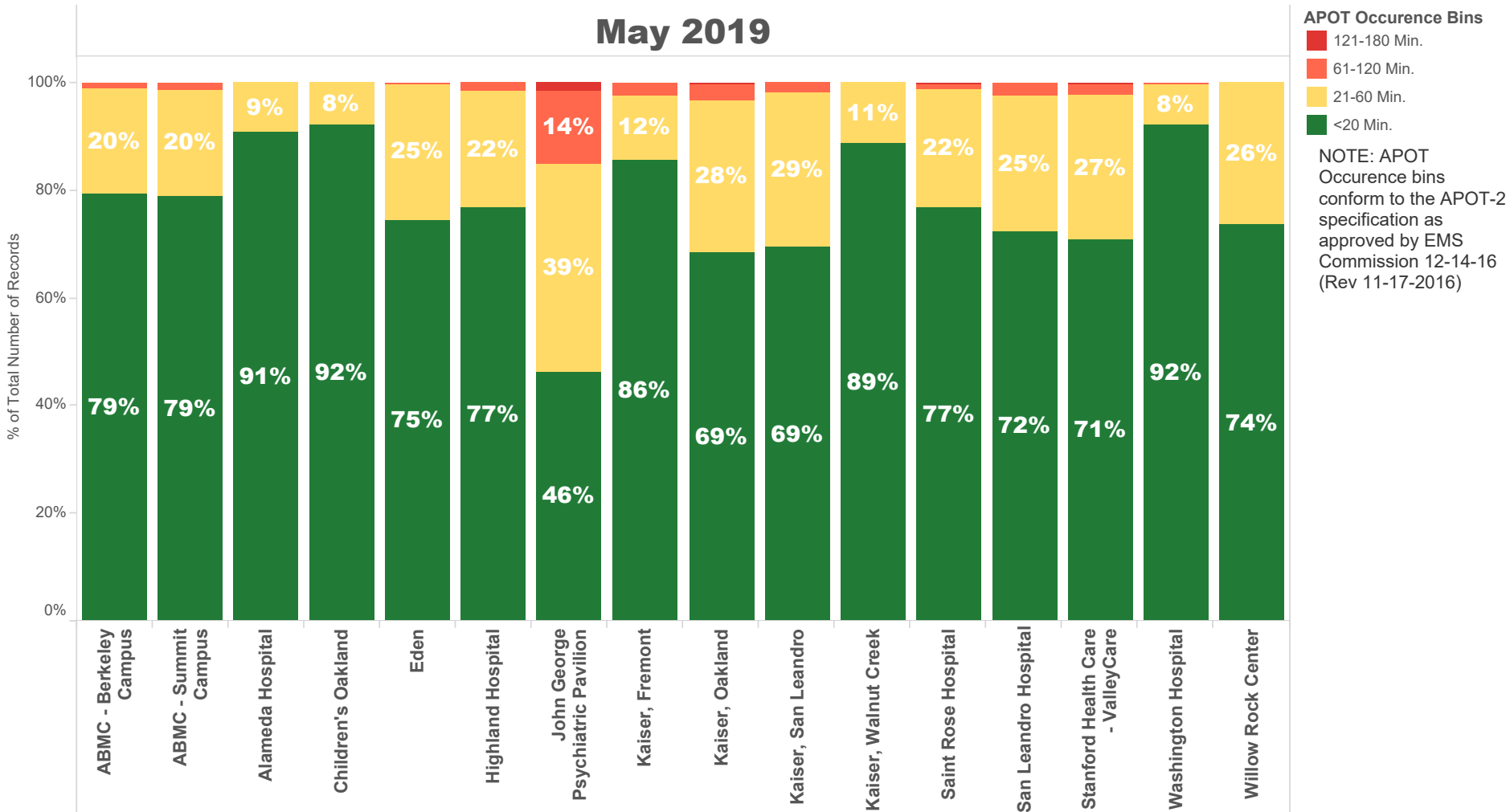


May 2019

NOTE: The **90th percentile** is the value for which 90% of the data points are smaller.

Destination Facility	Rank (Composite)	Avg. TOC	90th Percentile TOC	APOD >60 min	APOD % of N	N = Number of Transports
Kaiser, Walnut Creek	3	12 min.	22.0 min.	0	0%	170
ABMC - Berkeley Campus	5	15 min.	28.0 min.	5	1%	507
John George Psychiatric Pavilion	12	32 min.	76.0 min.	49	16%	311
Alameda Hospital	2	10 min.	19.2 min.	0	0%	209
Children's Oakland	1	10 min.	15.0 min.	0	0%	114
San Leandro Hospital	10	18 min.	37.4 min.	14	3%	547
Washington Hospital	2	11 min.	19.0 min.	1	0%	834
Kaiser, Fremont	7	13 min.	24.0 min.	12	3%	458
ABMC - Summit Campus	6	15 min.	31.0 min.	13	1%	1,042
Stanford Health Care - ValleyCare	11	19 min.	40.8 min.	15	3%	523
Kaiser, Oakland	11	19 min.	38.0 min.	24	4%	681
Kaiser, San Leandro	9	18 min.	35.0 min.	12	2%	688
Eden	6	16 min.	35.0 min.	3	0%	940
Highland Hospital	8	16 min.	33.0 min.	19	2%	1,174
Saint Rose Hospital	6	16 min.	30.0 min.	7	2%	454
Willow Rock Center	4	14 min.	22.9 min.	0	0%	42

May 2019



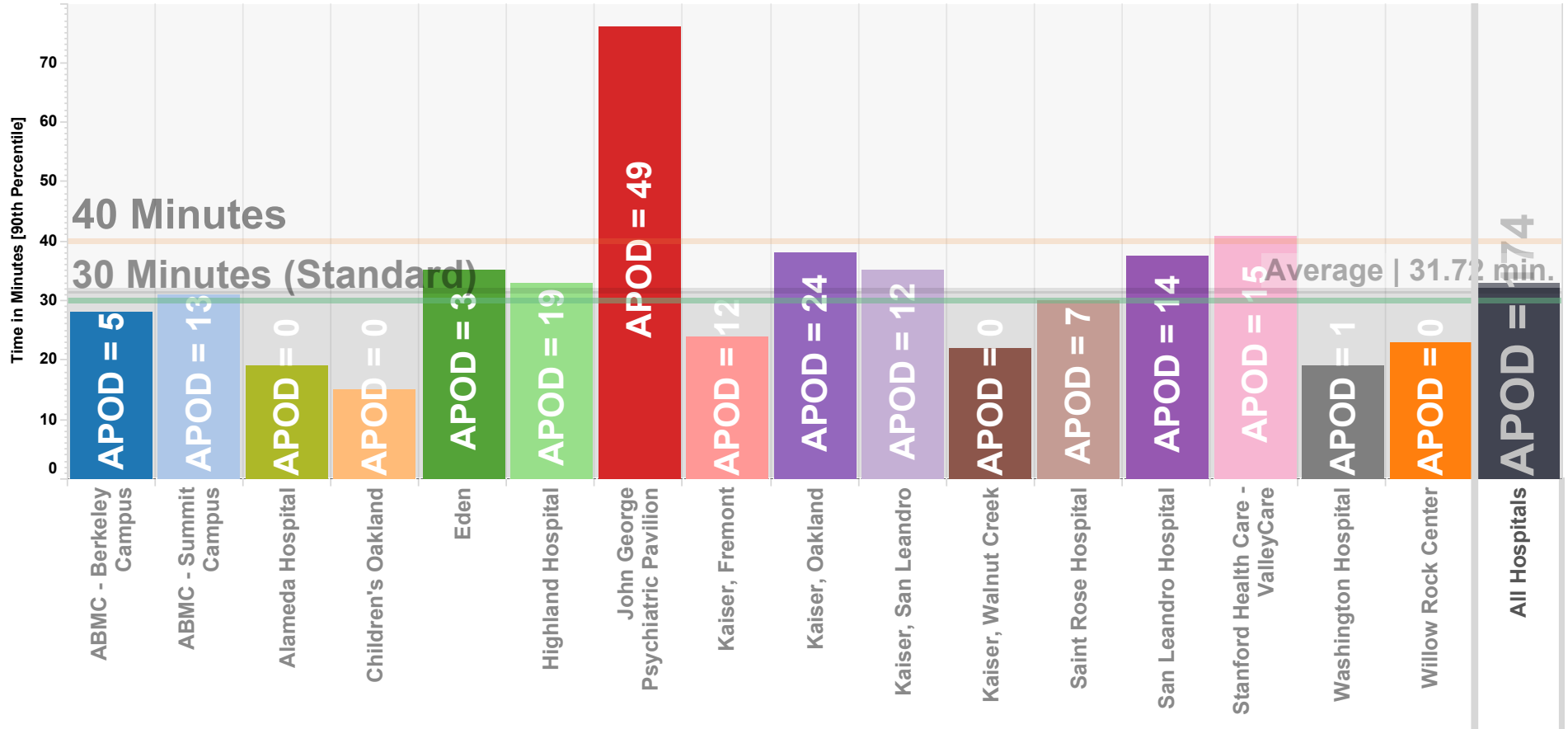
May 2019

APOC Occurrence Bins	ABMC - Berkeley Campus	ABMC - Summit Campus	Alameda Hospital	Children's Oakland	Eden	Highland Hospital	John George Psychiatric Pavilion	Kaiser, Fremont	Kaiser, Oakland	Kaiser, San Leandro	Kaiser, Walnut Creek	Saint Rose Hospital	San Leandro Hospital	Stanford Health Care - ValleyCare	Washington Hospital	Willow Rock Center
<20 Min.	79.5% 403	79.0% 823	90.9% 190	92.1% 105	74.6% 701	76.7% 901	46.3% 144	85.8% 393	68.6% 467	69.5% 478	88.8% 151	76.9% 349	72.4% 396	70.7% 370	92.2% 769	73.8% 31
21-60 Min.	19.5% 99	19.9% 207	9.1% 19	7.9% 9	25.1% 236	21.6% 254	38.6% 120	11.8% 54	28.2% 192	28.8% 198	11.2% 19	21.8% 99	25.2% 138	27.0% 141	7.7% 64	26.2% 11
61-120 Min.	1.0% 5	1.2% 12			0.3% 3	1.6% 19	13.5% 42	2.4% 11	2.9% 20	1.7% 12		1.1% 5	2.4% 13	2.1% 11	0.1% 1	
121-180 Min.							1.6% 5		0.3% 2			0.2% 1		0.2% 1		

NOTE: APOC Occurrence bins conform to the APOC-2 specification as approved by EMS Commission 12-14-16 (Rev 11-17-2016)

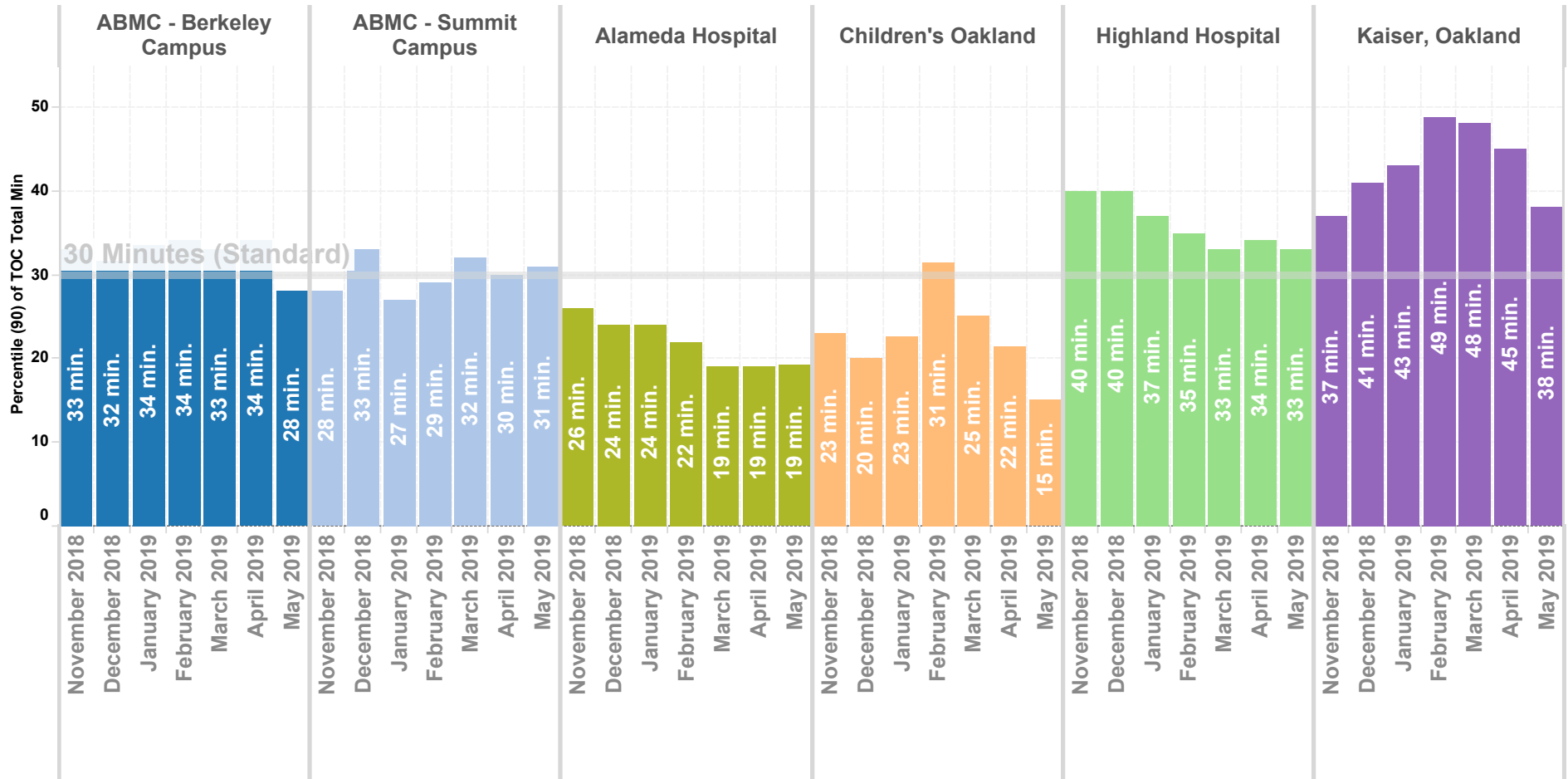
Ambulance Patient Offload Times (APOT) May 2019 90th Percentile

NOTE: The **90th percentile** is the value for which 90% of the data points are smaller.



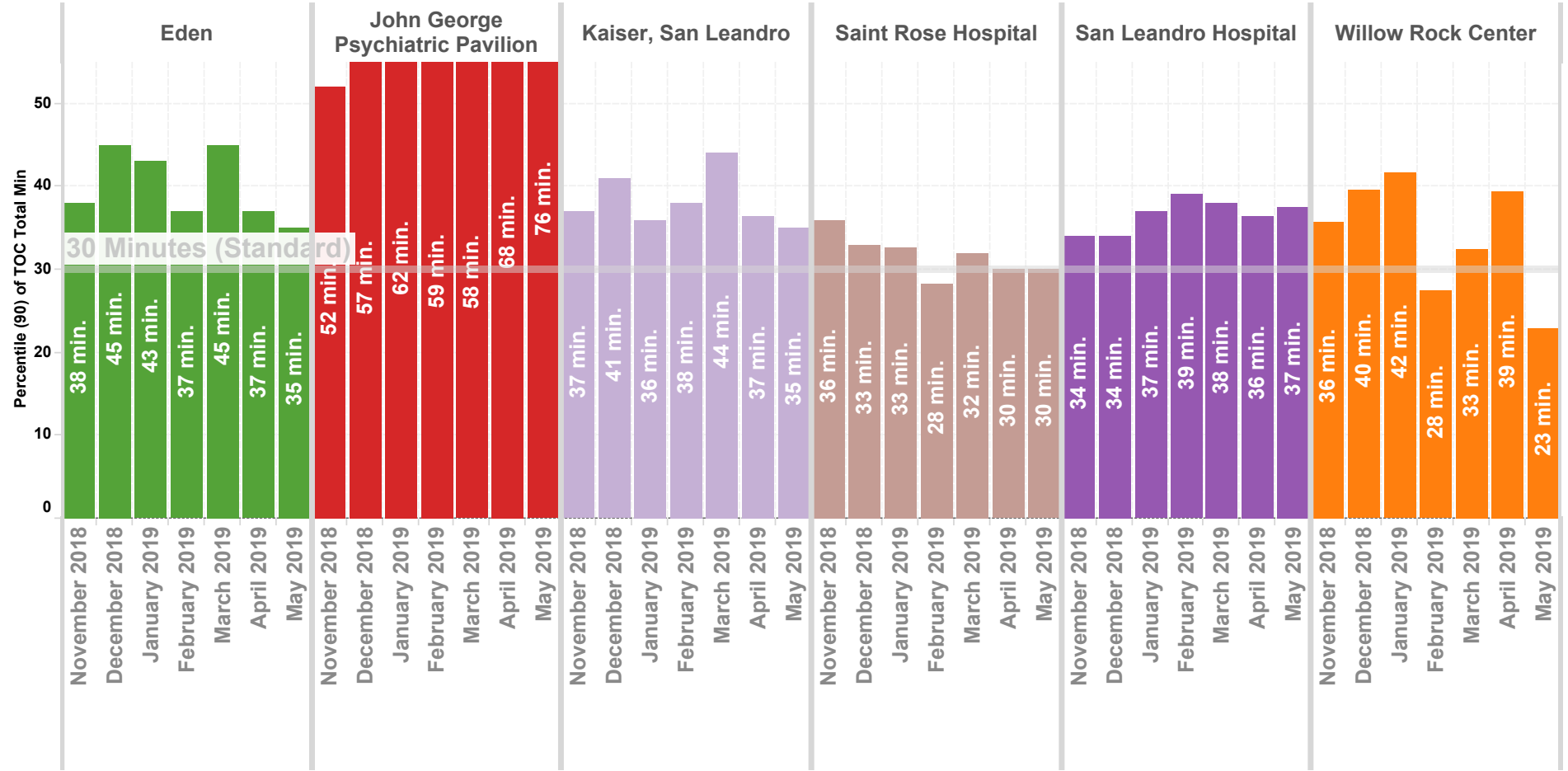
Wall Times (TOC) By Month - North County

Previous 8 Months | 90th Percentile



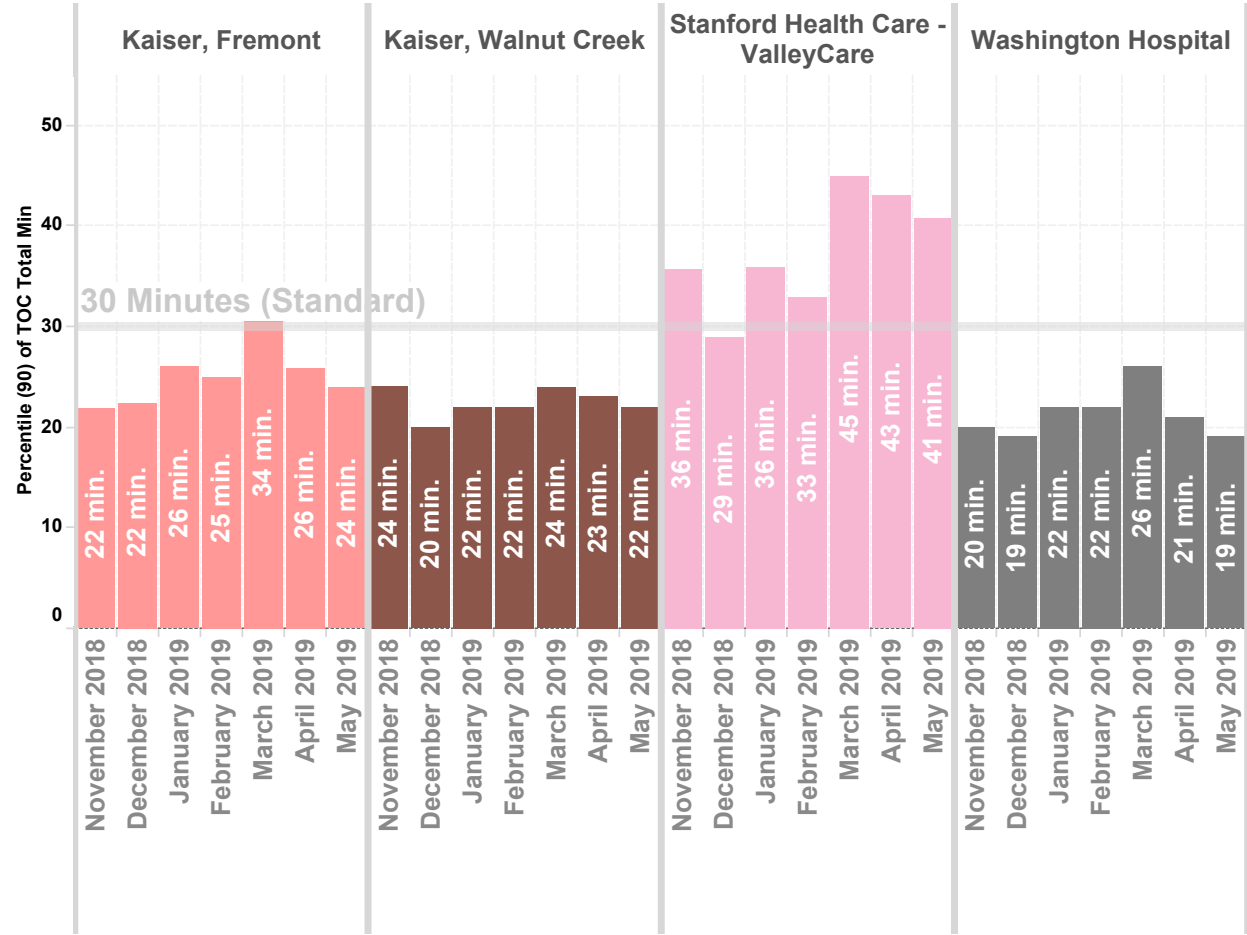
Wall Times (TOC) By Month - Mid County

Previous 8 Months | 90th Percentile



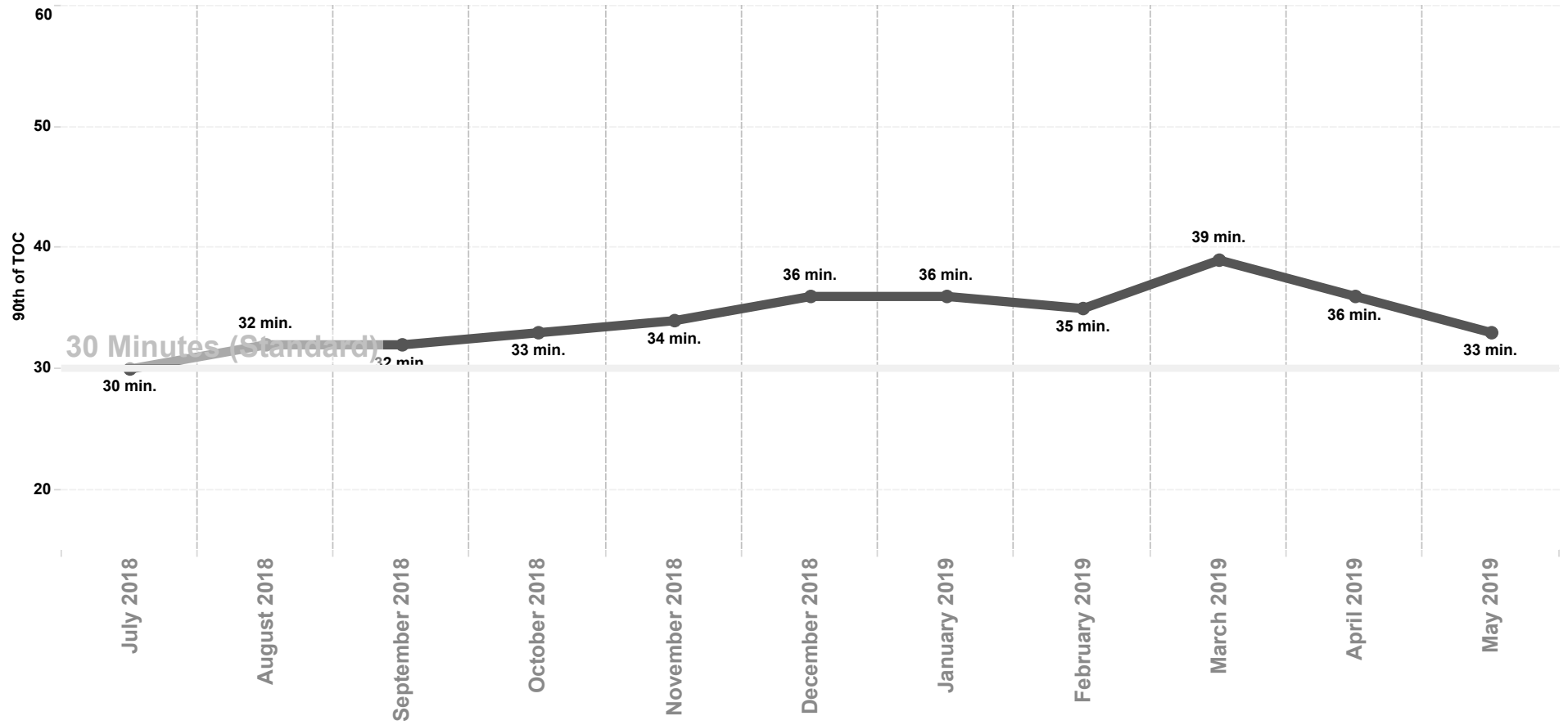
Wall Times (TOC) By Month - South & East County

Previous 8 Months | 90th Percentile



APOT All Hospitals

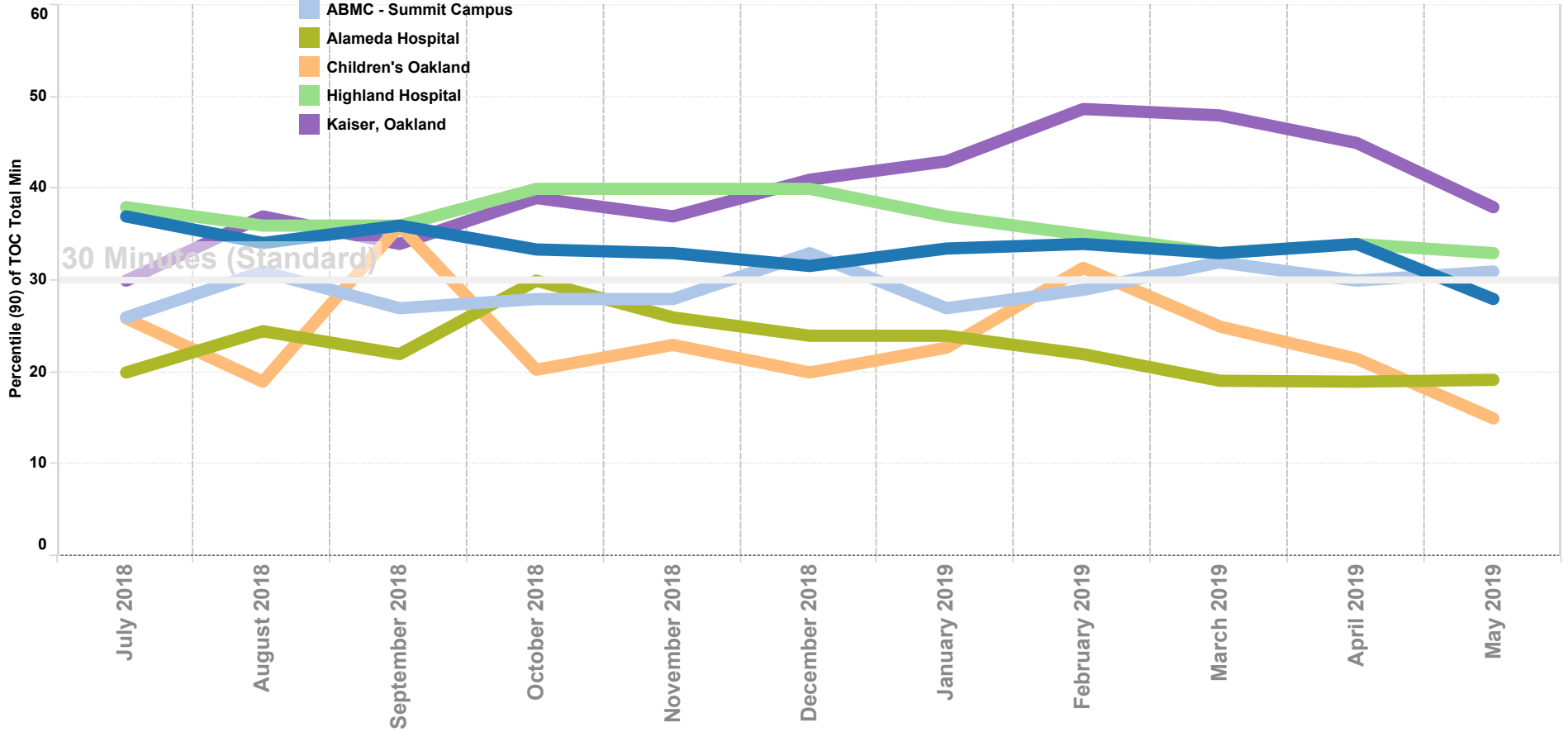
Previous 12 Months | 90th Percentile



APOT North County

Previous 12 Months | 90th Percentile

- Destination Facility**
- ABMC - Berkeley Camp..
 - ABMC - Summit Campus
 - Alameda Hospital
 - Children's Oakland
 - Highland Hospital
 - Kaiser, Oakland

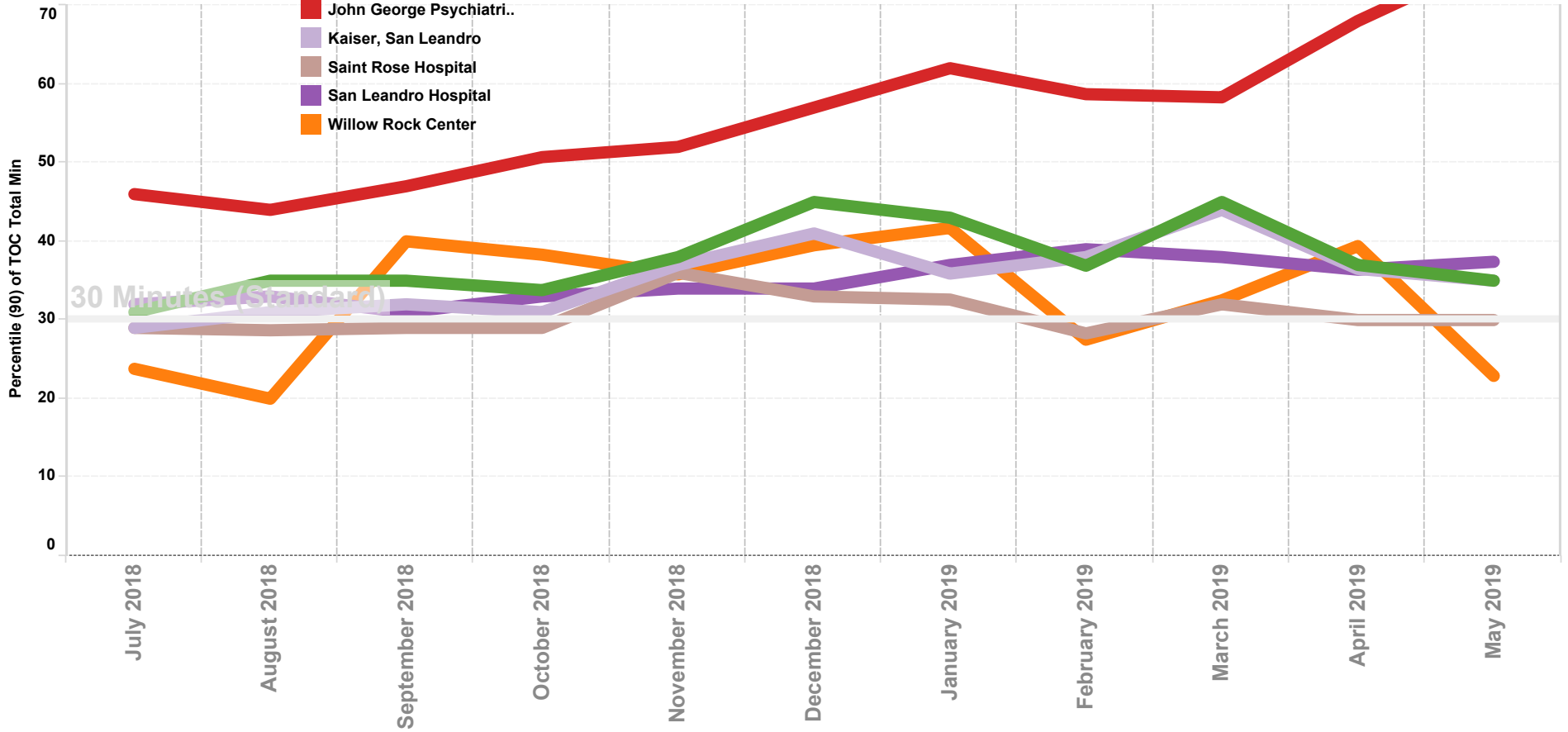


APOT Mid County

Previous 12 Months | 90th Percentile

Destination Facility

- Eden
- John George Psychiatri..
- Kaiser, San Leandro
- Saint Rose Hospital
- San Leandro Hospital
- Willow Rock Center



APOT South and East County

Previous 12 Months | 90th Percentile

