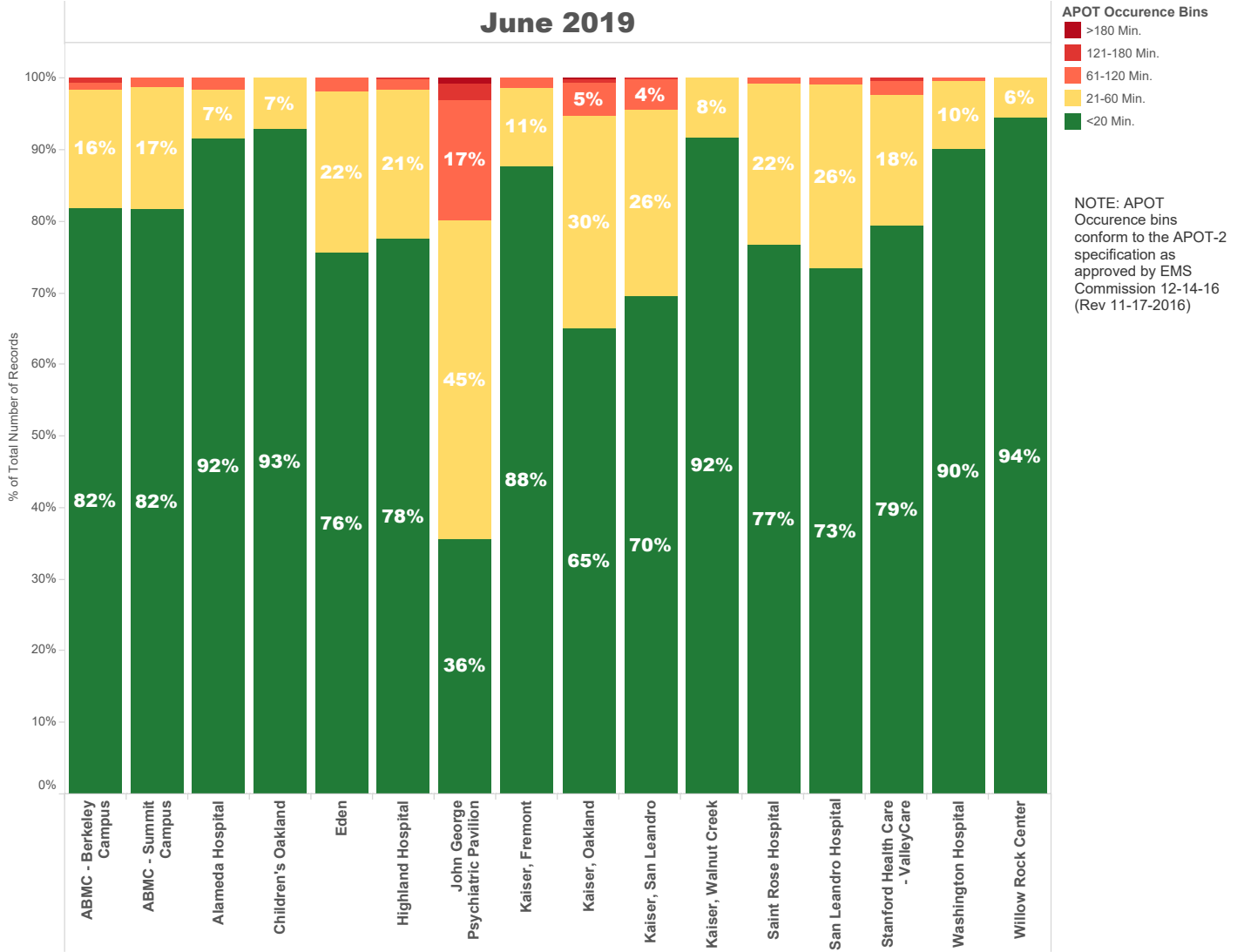


June 2019

NOTE: The **90th percentile** is the value for which 90% of the data points are smaller.

Destination Facility	Rank (Composite)	Avg. TOC	90th Percentile TOC	APOD >60 min	APOD % of N	N = Number of Transports
Kaiser, Walnut Creek	2	12 min.	19.0 min.	0	0%	147
ABMC - Berkeley Campus	9	15 min.	27.0 min.	3	2%	194
John George Psychiatric Pavilion	14	38 min.	75.0 min.	61	20%	303
Alameda Hospital	5	10 min.	18.9 min.	3	1%	202
Children's Oakland	1	10 min.	18.3 min.	0	0%	98
San Leandro Hospital	8	17 min.	32.0 min.	5	1%	481
Washington Hospital	4	11 min.	20.0 min.	3	0%	778
Kaiser, Fremont	9	13 min.	25.0 min.	8	2%	449
ABMC - Summit Campus	7	14 min.	28.0 min.	14	1%	970
Stanford Health Care - ValleyCare	11	16 min.	33.0 min.	14	3%	516
Kaiser, Oakland	13	21 min.	46.0 min.	31	5%	572
Kaiser, San Leandro	12	20 min.	42.0 min.	30	4%	680
Eden	10	17 min.	33.0 min.	17	2%	918
Highland Hospital	9	16 min.	31.0 min.	17	1%	1,151
Saint Rose Hospital	6	16 min.	31.0 min.	3	1%	427
Willow Rock Center	3	12 min.	19.3 min.	0	0%	18

June 2019



June 2019

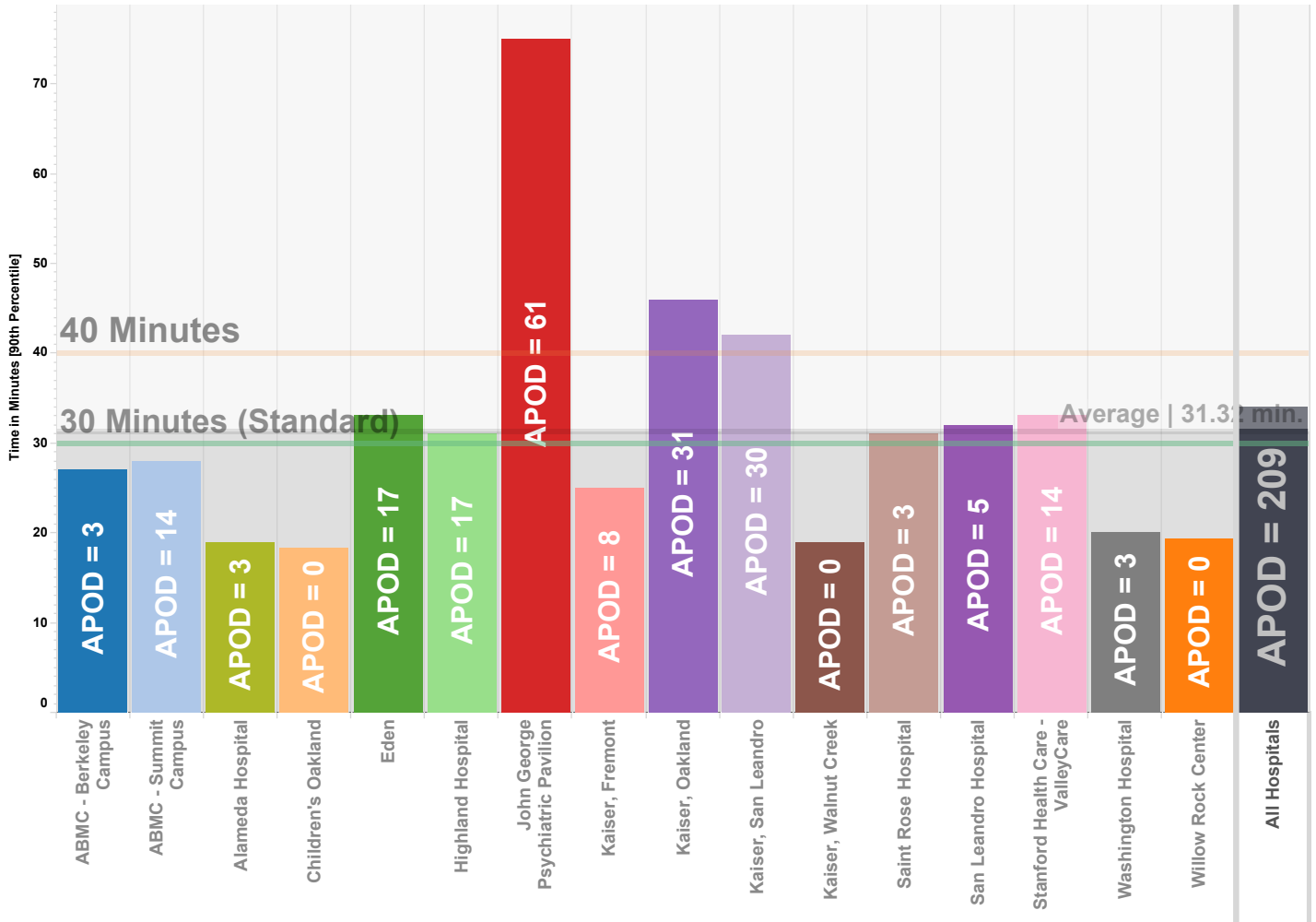
APOT Occurrence Bins	ABMC - Berkeley Campus	ABMC - Summit Campus	Alameda Hospital	Children's Oakland	Eden	Highland Hospital	John George Psychiatric Pavilion	Kaiser, Fremont	Kaiser, Oakland	Kaiser, San Leandro	Kaiser, Walnut Creek	Saint Rose Hospital	San Leandro Hospital	Stanford Health Care - ValleyCare	Washington Hospital	Willow Rock Center
<20 Min.	82.0% 159	81.8% 793	91.6% 185	92.9% 91	75.7% 695	77.6% 893	35.6% 108	87.8% 394	65.0% 372	69.7% 474	91.8% 135	76.8% 328	73.4% 353	79.5% 410	90.1% 701	94.4% 17
21-60 Min.	16.5% 32	17.0% 165	6.9% 14	7.1% 7	22.4% 206	20.9% 241	44.6% 135	10.9% 49	29.7% 170	25.9% 176	8.2% 12	22.5% 96	25.8% 124	18.2% 94	9.5% 74	5.6% 1
61-120 Min.	1.0% 2	1.2% 12	1.5% 3		1.9% 17	1.3% 15	16.8% 51	1.3% 6	4.7% 27	4.3% 29		0.7% 3	0.8% 4	1.9% 10	0.4% 3	
121-180 Min.	0.5% 1					0.2% 2	2.3% 7		0.3% 2	0.1% 1				0.4% 2		
>180 Min.							0.7% 2		0.2% 1							

NOTE: APOT Occurrence bins conform to the APOT-2 specification as approved by EMS Commission 12-14-16 (Rev 11-17-2016)

Ambulance Patient Offload Times (APOT) June 2019

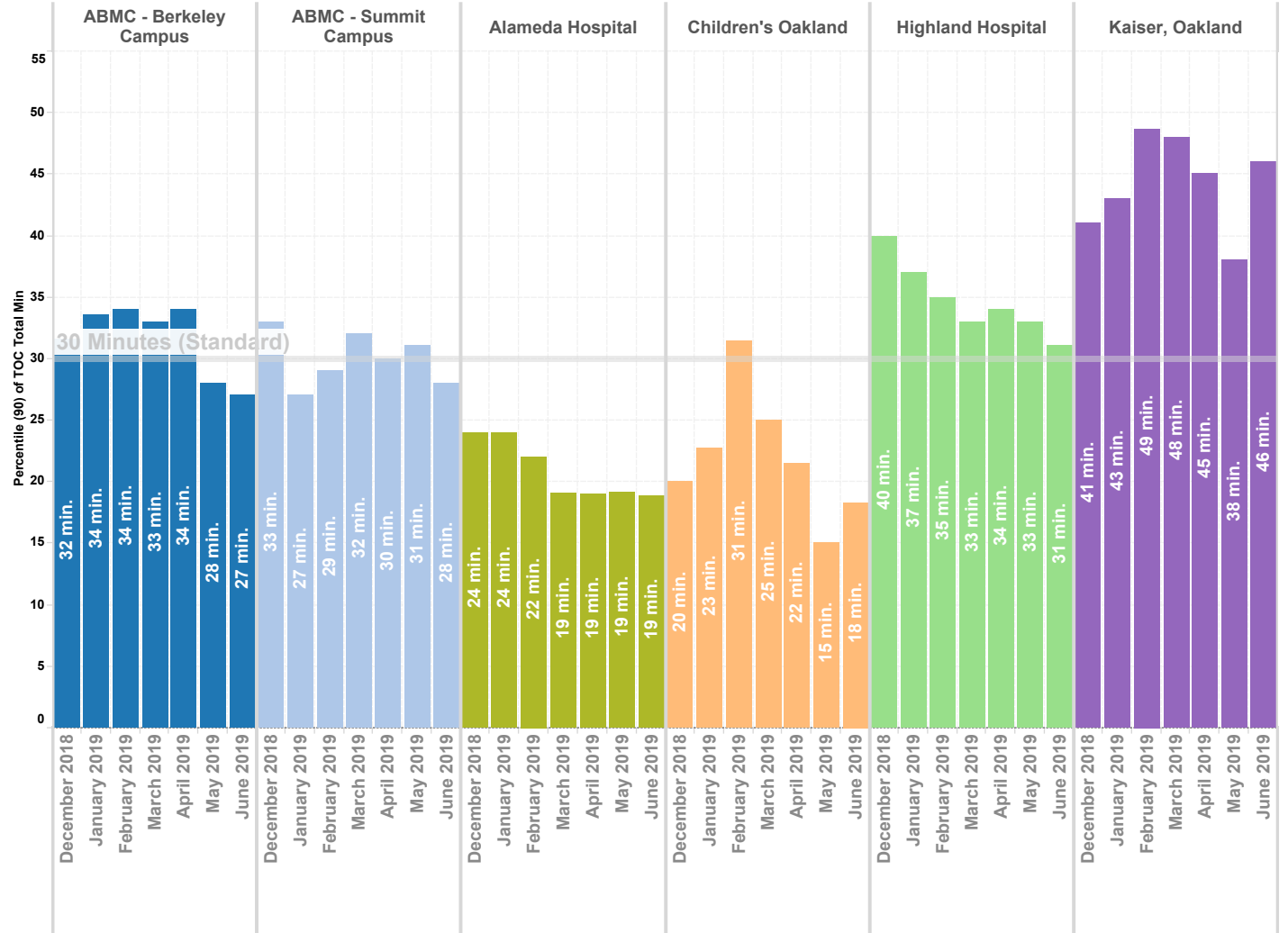
90th Percentile

NOTE: The **90th percentile** is the value for which 90% of the data points are smaller.



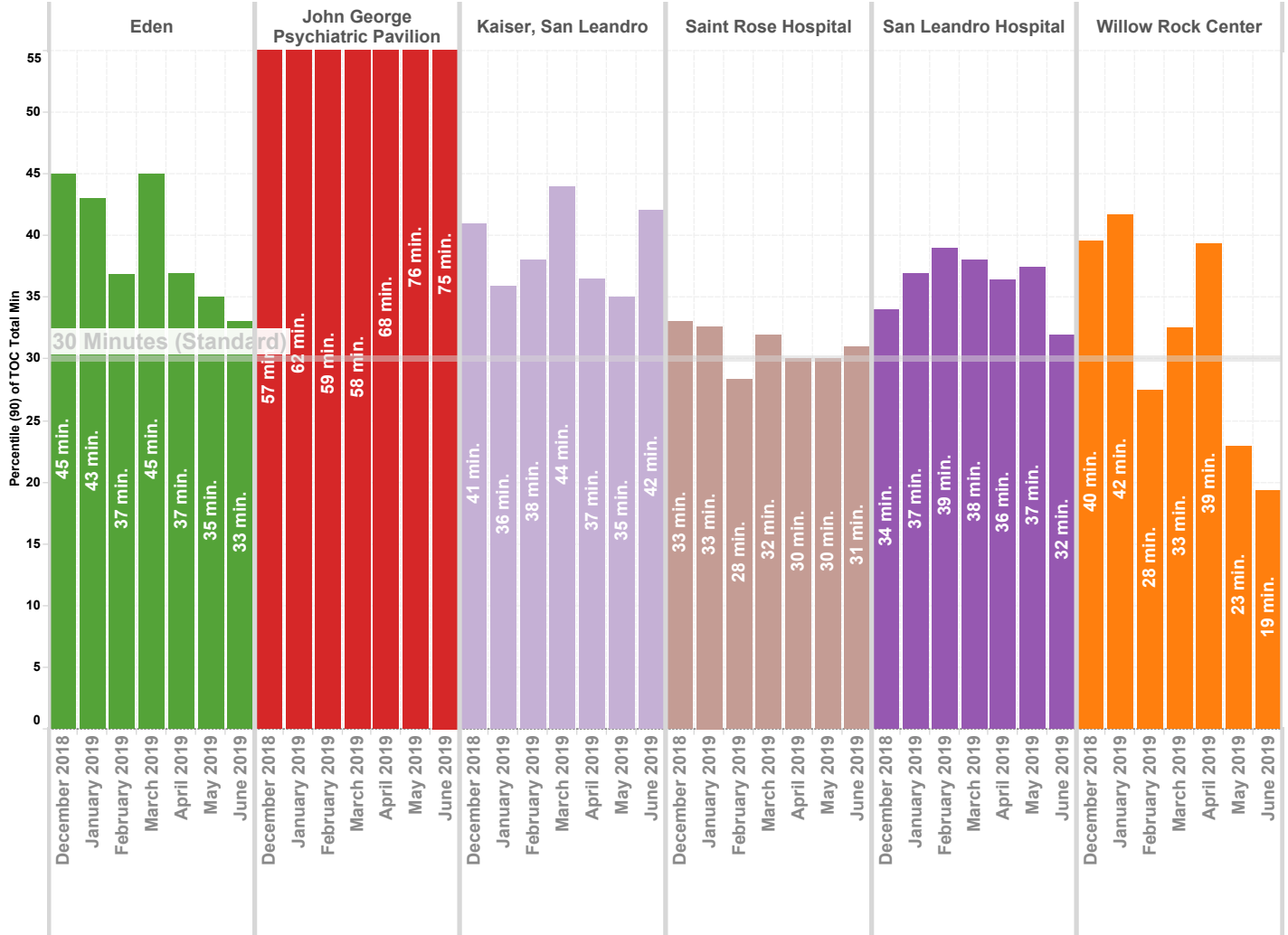
Wall Times (TOC) By Month - North County

Previous 8 Months | 90th Percentile



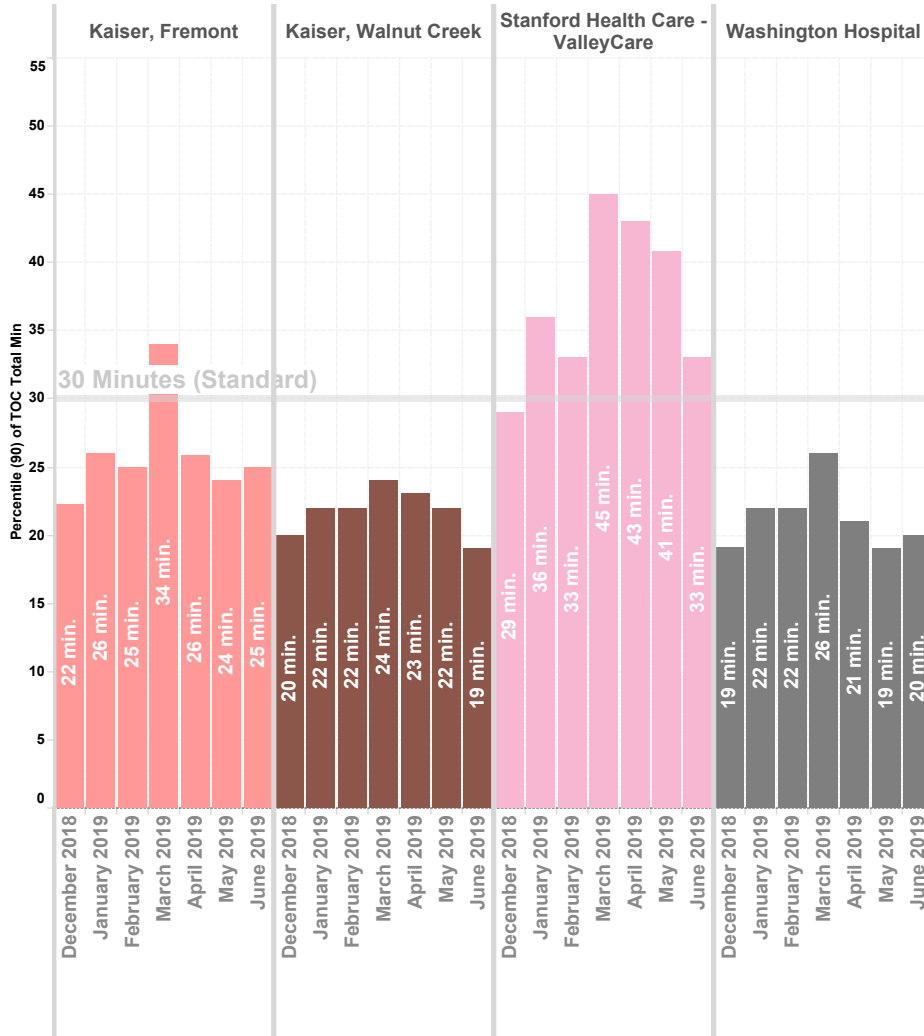
Wall Times (TOC) By Month - Mid County

Previous 8 Months | 90th Percentile



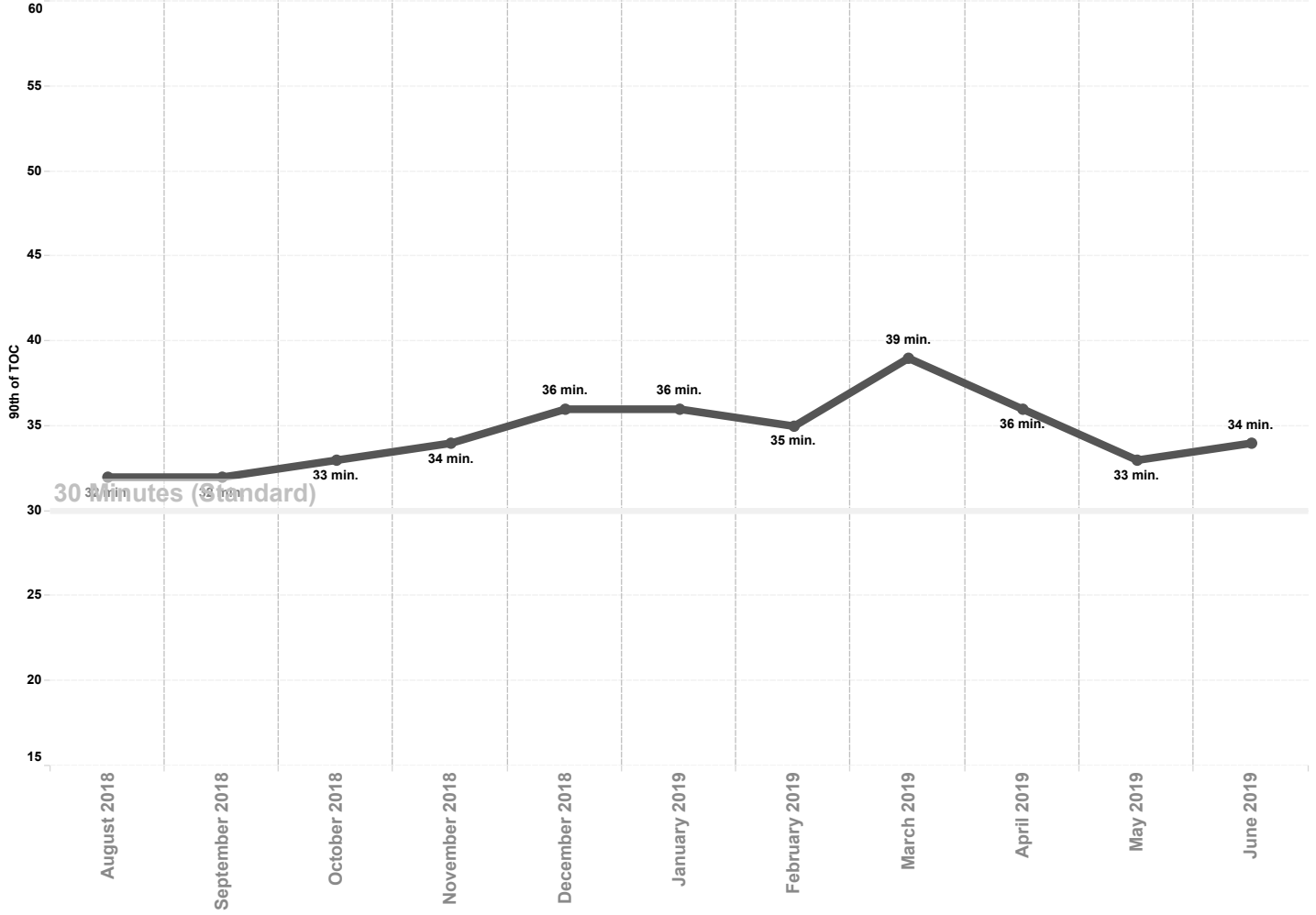
Wall Times (TOC) By Month - South & East County

Previous 8 Months | 90th Percentile



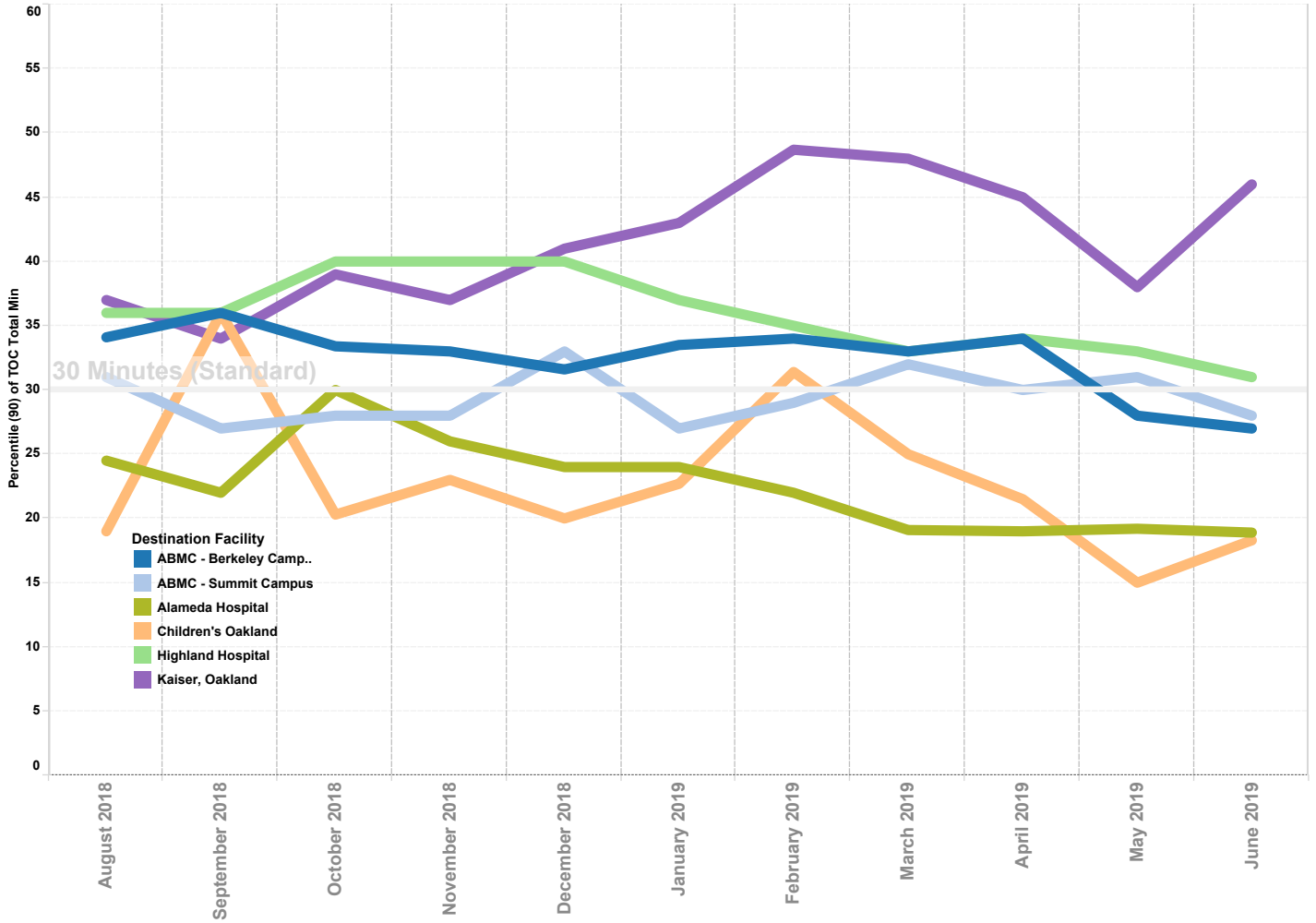
APOT All Hospitals

Previous 12 Months | 90th Percentile



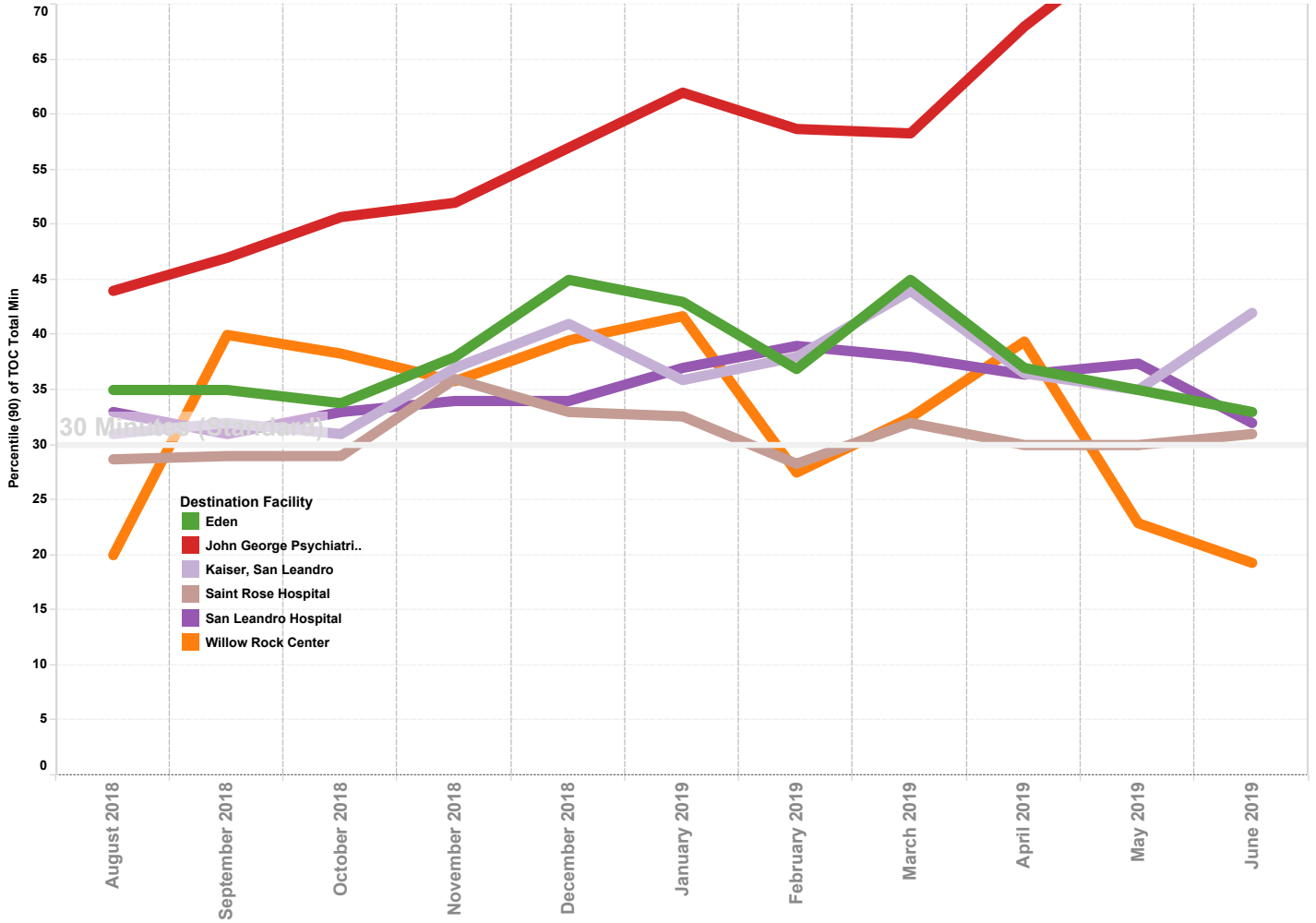
APOT North County

Previous 12 Months | 90th Percentile



APOT Mid County

Previous 12 Months | 90th Percentile



APOT South and East County

Previous 12 Months | 90th Percentile

