

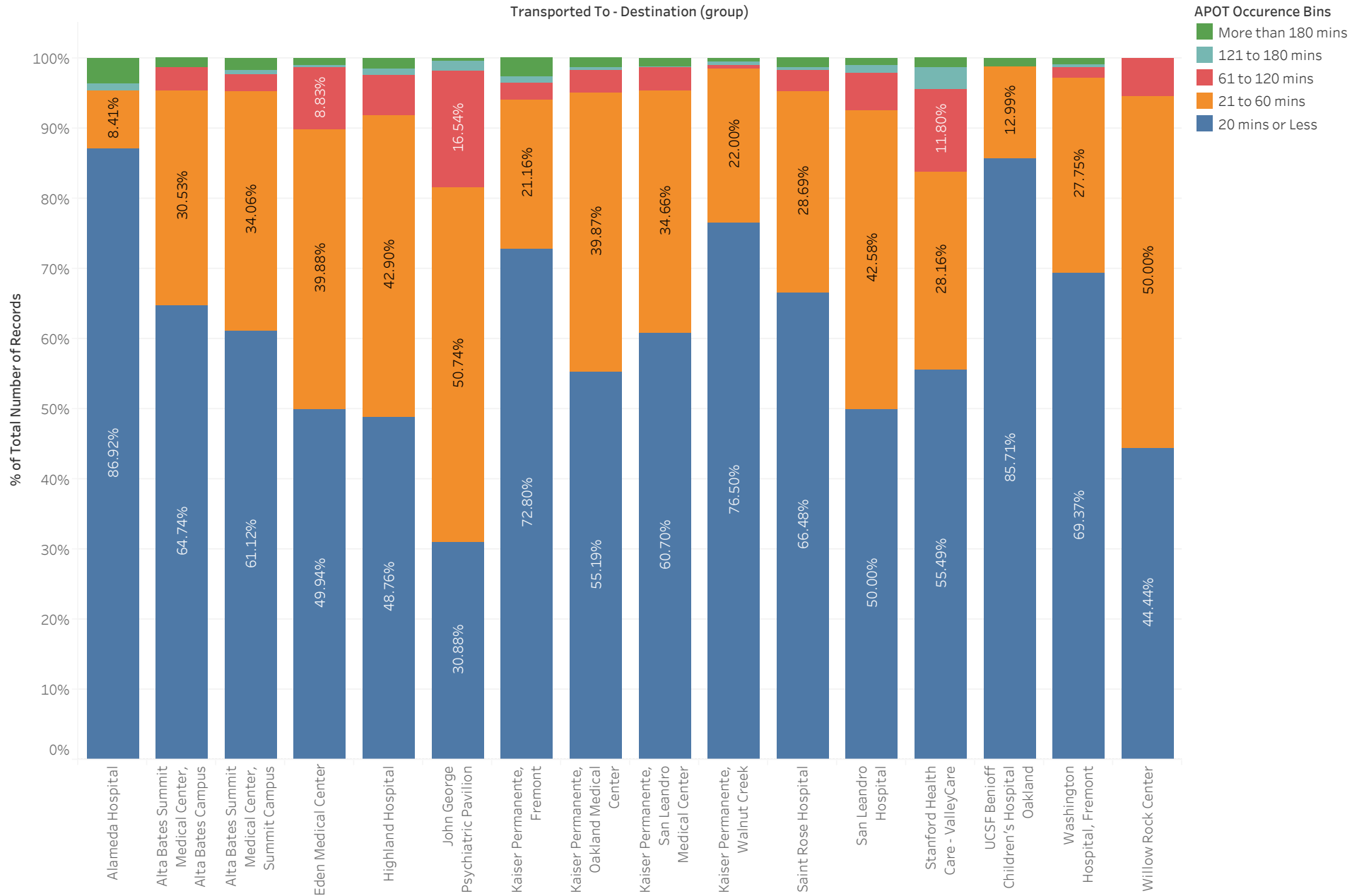
## Summary - February 2021

Transported To - Destination (group)	Avg. TOC	Percentile (90) of TOC	APOD > 60 min	APOD % of N	
Alameda Hospital	39.6	23.2	10	5%	214
Alta Bates Summit Medical Center, Alta Bates Campus	35.0	44.0	18	5%	380
Alta Bates Summit Medical Center, Summit Campus	38.9	45.0	49	5%	1,016
Eden Medical Center	35.2	61.0	83	10%	815
Highland Hospital	41.0	57.0	84	8%	1,007
John George Psychiatric Pavilion	44.2	80.0	50	18%	272
Kaiser Permanente, Fremont	45.8	42.0	24	6%	397
Kaiser Permanente, Oakland Medical Center	39.4	45.0	30	5%	607
Kaiser Permanente, San Leandro Medical Center	36.3	42.0	29	5%	626
Kaiser Permanente, Walnut Creek	18.7	28.0	3	2%	200
Saint Rose Hospital	38.2	42.3	17	5%	352
San Leandro Hospital	39.2	52.0	34	7%	458
Stanford Health Care - ValleyCare	40.2	82.8	79	16%	483
UCSF Benioff Children's Hospital Oakland	31.0	24.4	1	1%	77
Washington Hospital, Fremont	29.6	39.7	21	3%	728
Willow Rock Center	23.8	32.4	1	6%	18
<b>Grand Total</b>					<b>7,650</b>

# APOT Bins

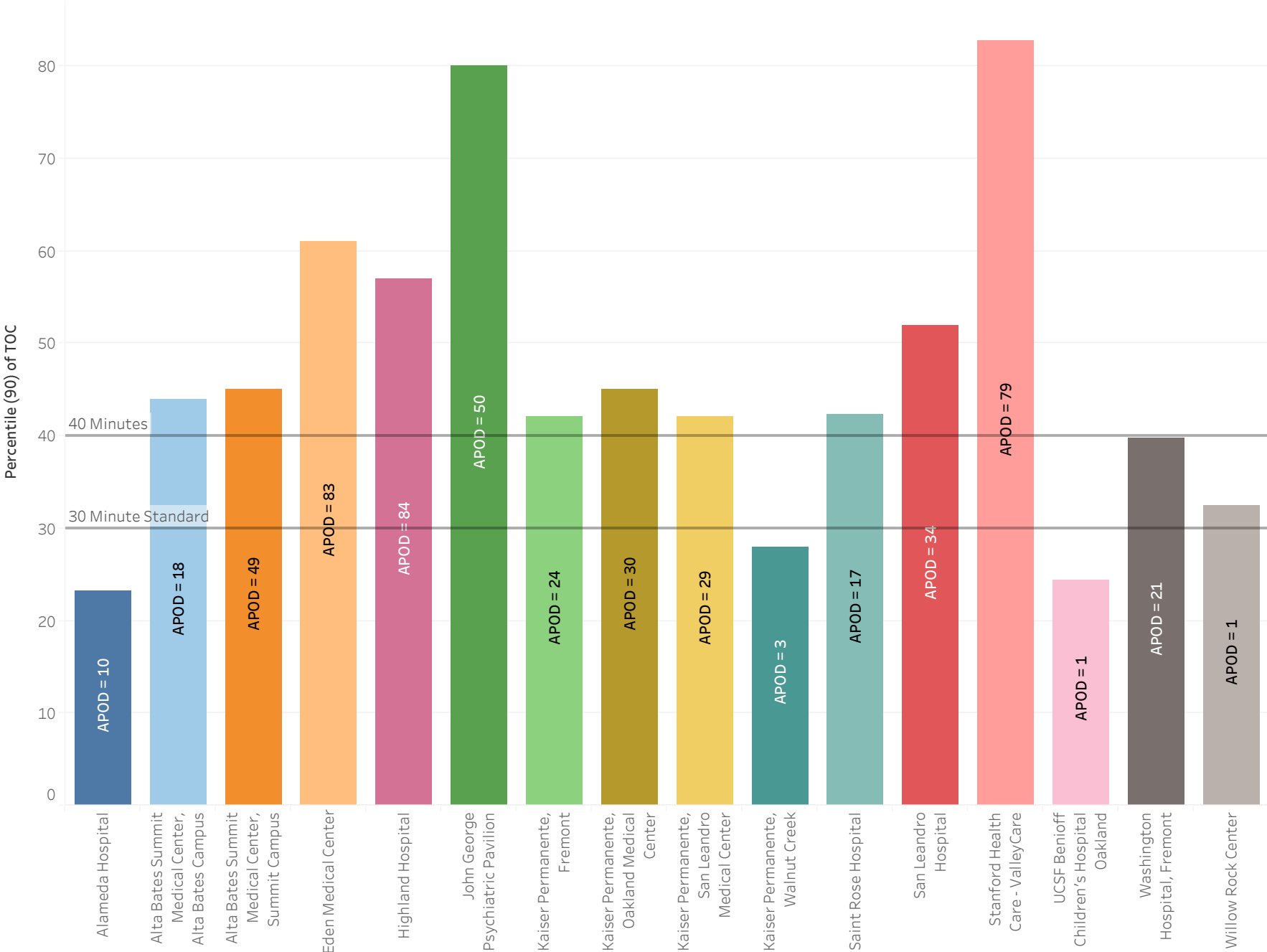
Transported To - Destination (group)	APOT Occurrence Bins					Grand Total
	20 mins or Less	21 to 60 mins	61 to 120 mins	121 to 180 mins	More than 180 mins	
Alameda Hospital	186 86.92%	18 8.41%		2 0.93%	8 3.74%	214 100.00%
Alta Bates Summit Medical Center, Alta Bates Campus	246 64.74%	116 30.53%	13 3.42%		5 1.32%	380 100.00%
Alta Bates Summit Medical Center, Summit Campus	621 61.12%	346 34.06%	25 2.46%	7 0.69%	17 1.67%	1,016 100.00%
Eden Medical Center	407 49.94%	325 39.88%	72 8.83%	3 0.37%	8 0.98%	815 100.00%
Highland Hospital	491 48.76%	432 42.90%	58 5.76%	11 1.09%	15 1.49%	1,007 100.00%
John George Psychiatric Pavilion	84 30.88%	138 50.74%	45 16.54%	4 1.47%	1 0.37%	272 100.00%
Kaiser Permanente, Fremont	289 72.80%	84 21.16%	10 2.52%	3 0.76%	11 2.77%	397 100.00%
Kaiser Permanente, Oakland Medical Center	335 55.19%	242 39.87%	20 3.29%	2 0.33%	8 1.32%	607 100.00%
Kaiser Permanente, San Leandro Medical Center	380 60.70%	217 34.66%	20 3.19%	1 0.16%	8 1.28%	626 100.00%
Kaiser Permanente, Walnut Creek	153 76.50%	44 22.00%	1 0.50%	1 0.50%	1 0.50%	200 100.00%
Saint Rose Hospital	234 66.48%	101 28.69%	11 3.13%	1 0.28%	5 1.42%	352 100.00%
San Leandro Hospital	229 50.00%	195 42.58%	24 5.24%	5 1.09%	5 1.09%	458 100.00%
Stanford Health Care - ValleyCare	268 55.49%	136 28.16%	57 11.80%	15 3.11%	7 1.45%	483 100.00%
UCSF Benioff Children's Hospital Oakland	66 85.71%	10 12.99%			1 1.30%	77 100.00%
Washington Hospital, Fremont	505 69.37%	202 27.75%	11 1.51%	3 0.41%	7 0.96%	728 100.00%
Willow Rock Center	8 44.44%	9 50.00%	1 5.56%			18 100.00%
<b>Grand Total</b>	<b>4,502</b> <b>58.85%</b>	<b>2,615</b> <b>34.18%</b>	<b>368</b> <b>4.81%</b>	<b>58</b> <b>0.76%</b>	<b>107</b> <b>1.40%</b>	<b>7,650</b> <b>100.00%</b>

# APOT Bins Graph



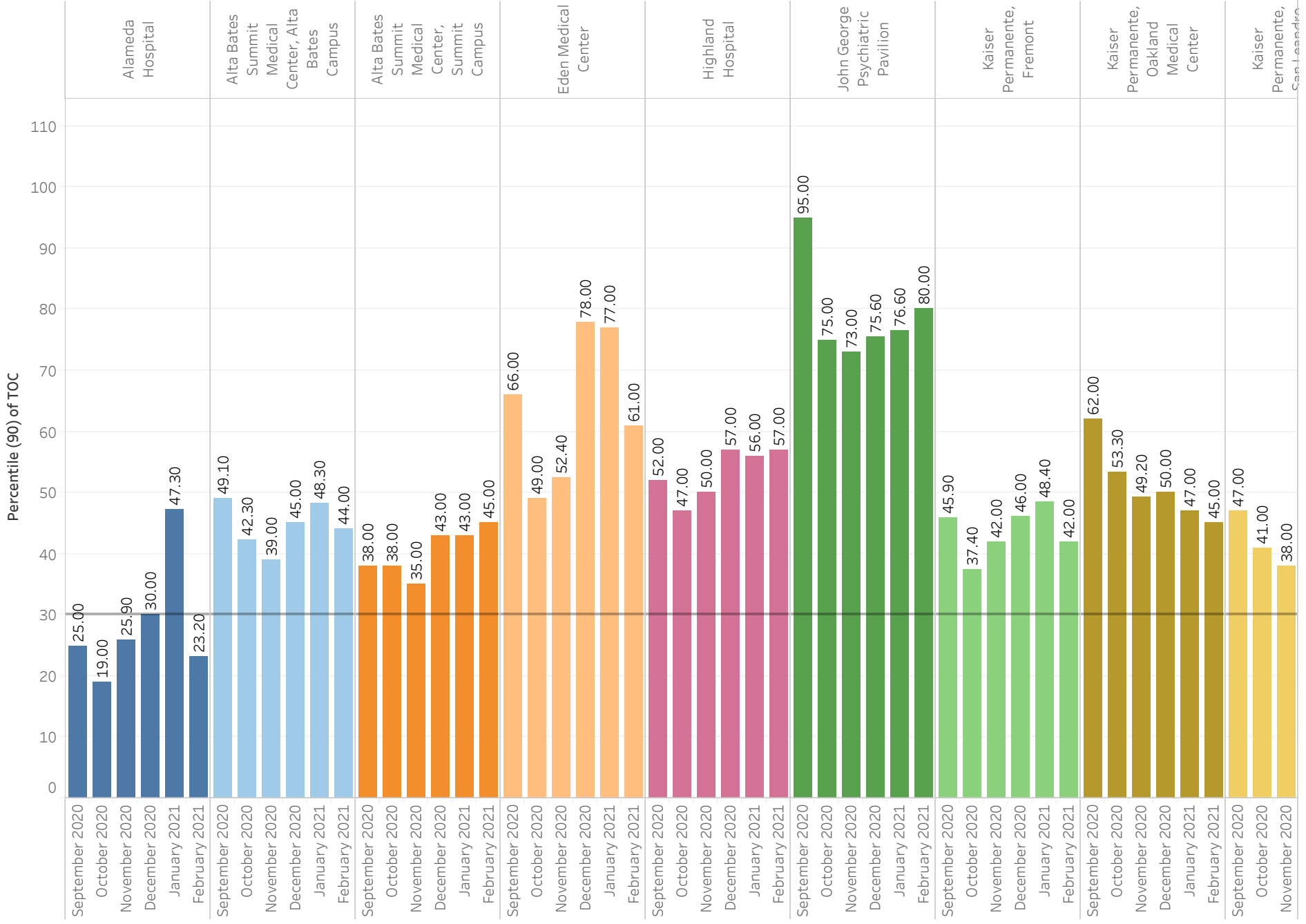
# Current Month 90% APOT

Transported To - Destination (group)

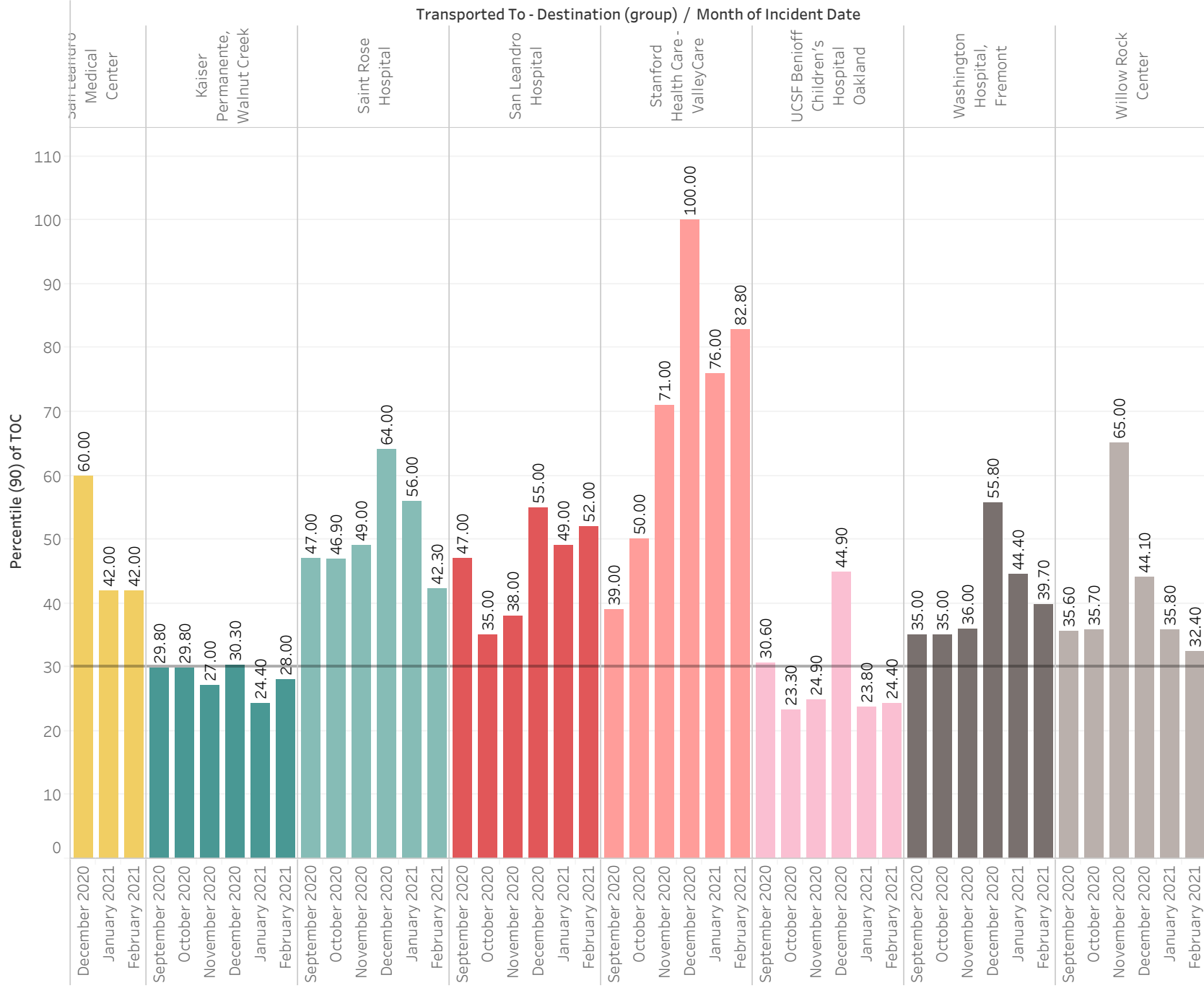


# Prev Month 90% APOT

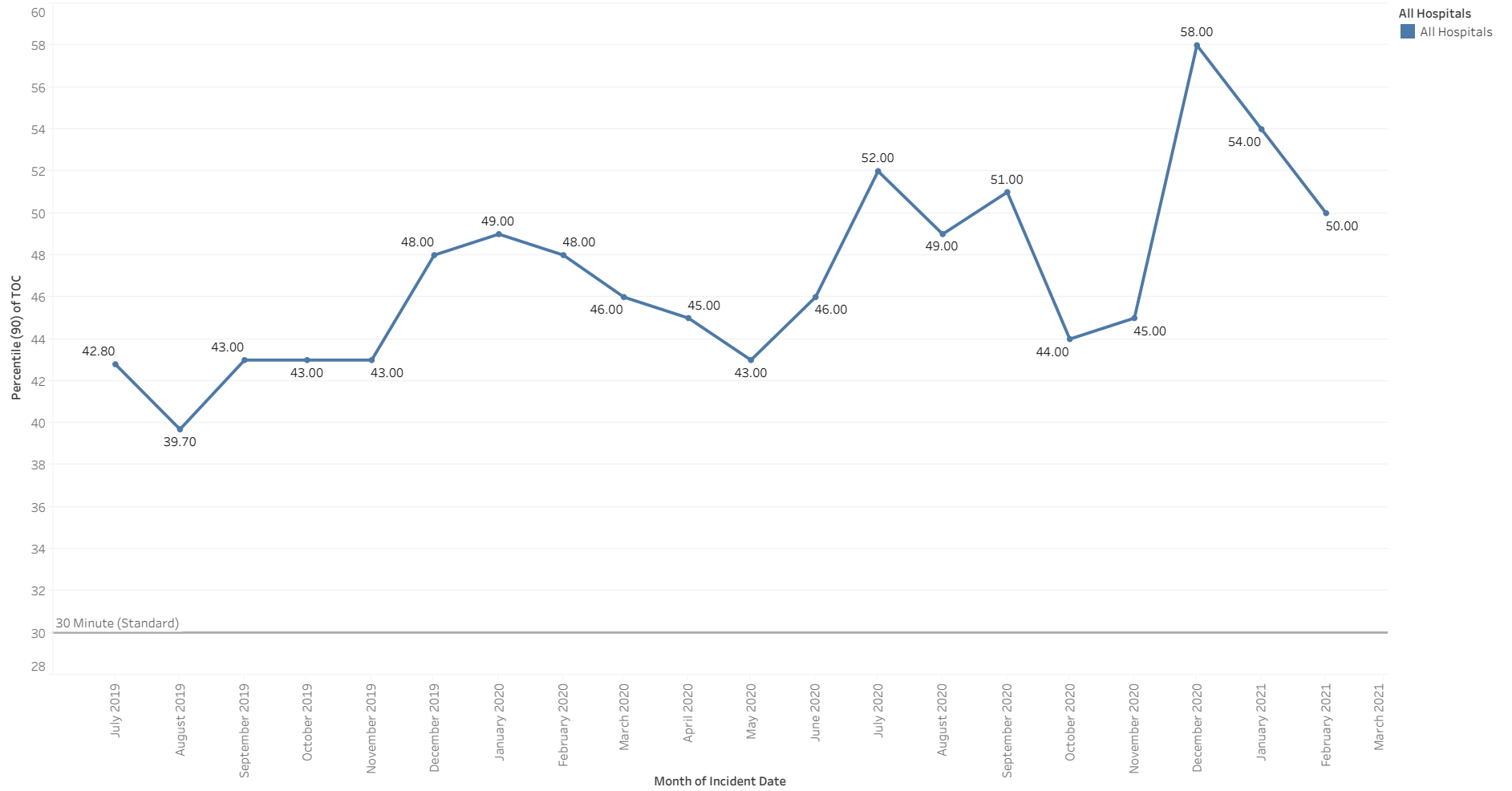
Transported To - Destination (group) / Month of Incident Date



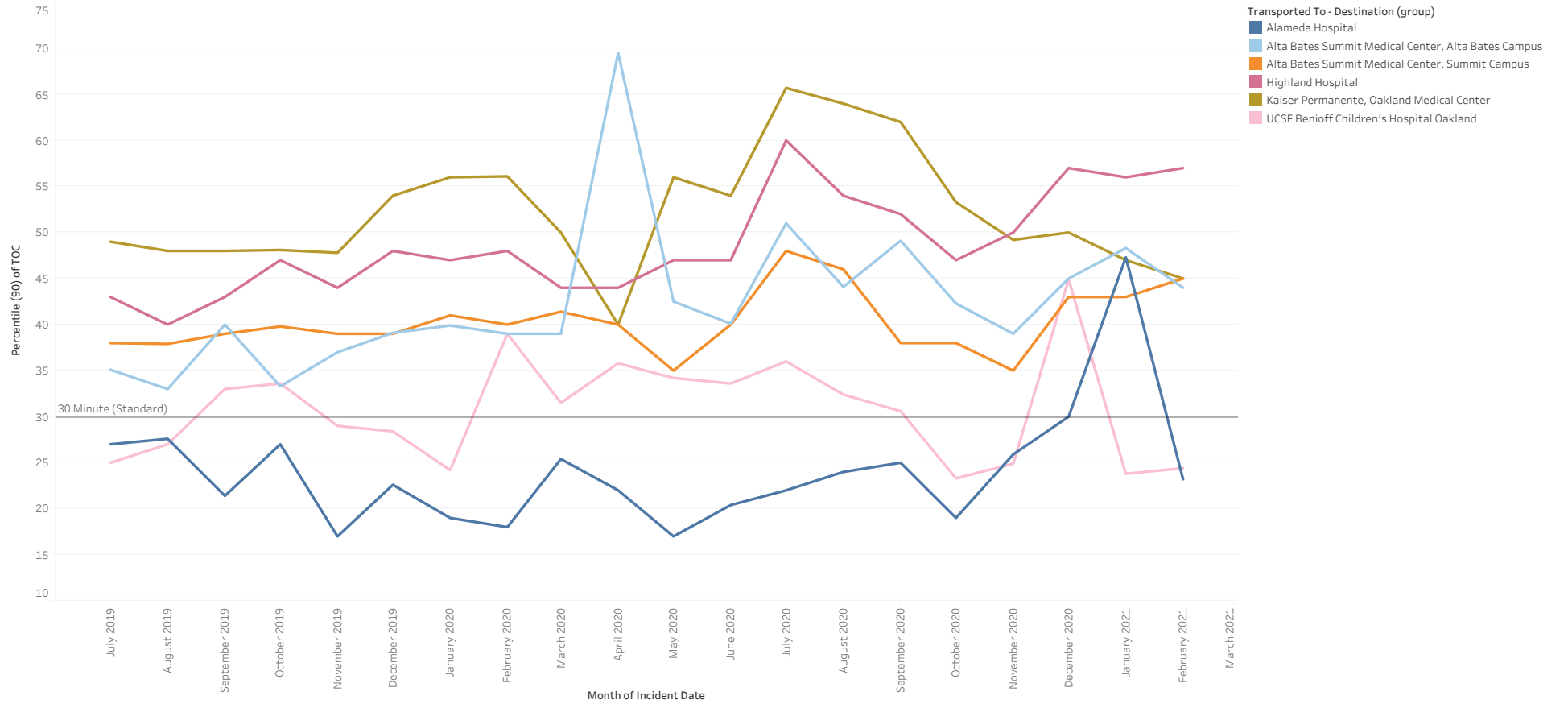
# Prev Month 90% APOT



# All Hospital 90% APOT

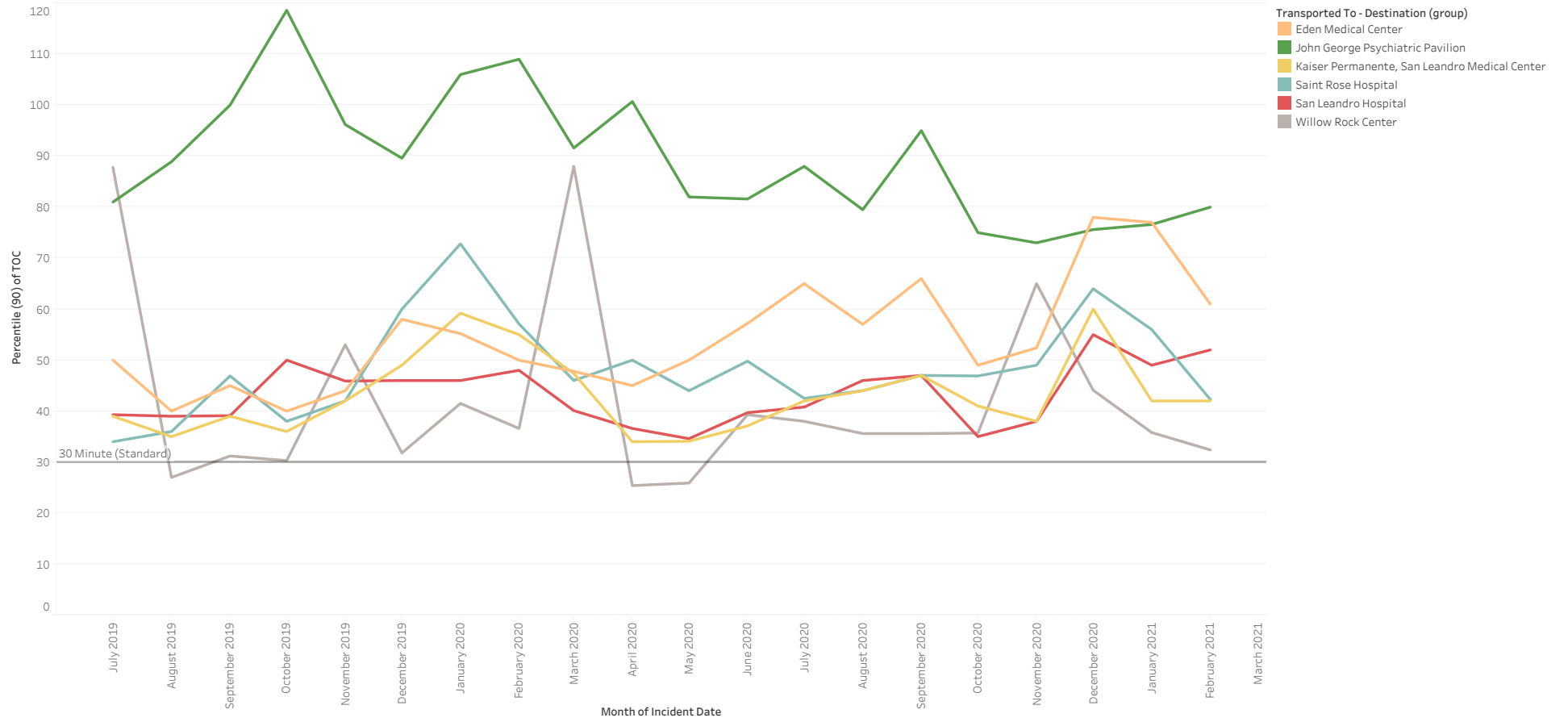


# North 90% APOT





# Mid 90% APOT



# South and East 90% APOT

